

EAT . DRINK . LOCAL

AURA

St. Paul Quarter



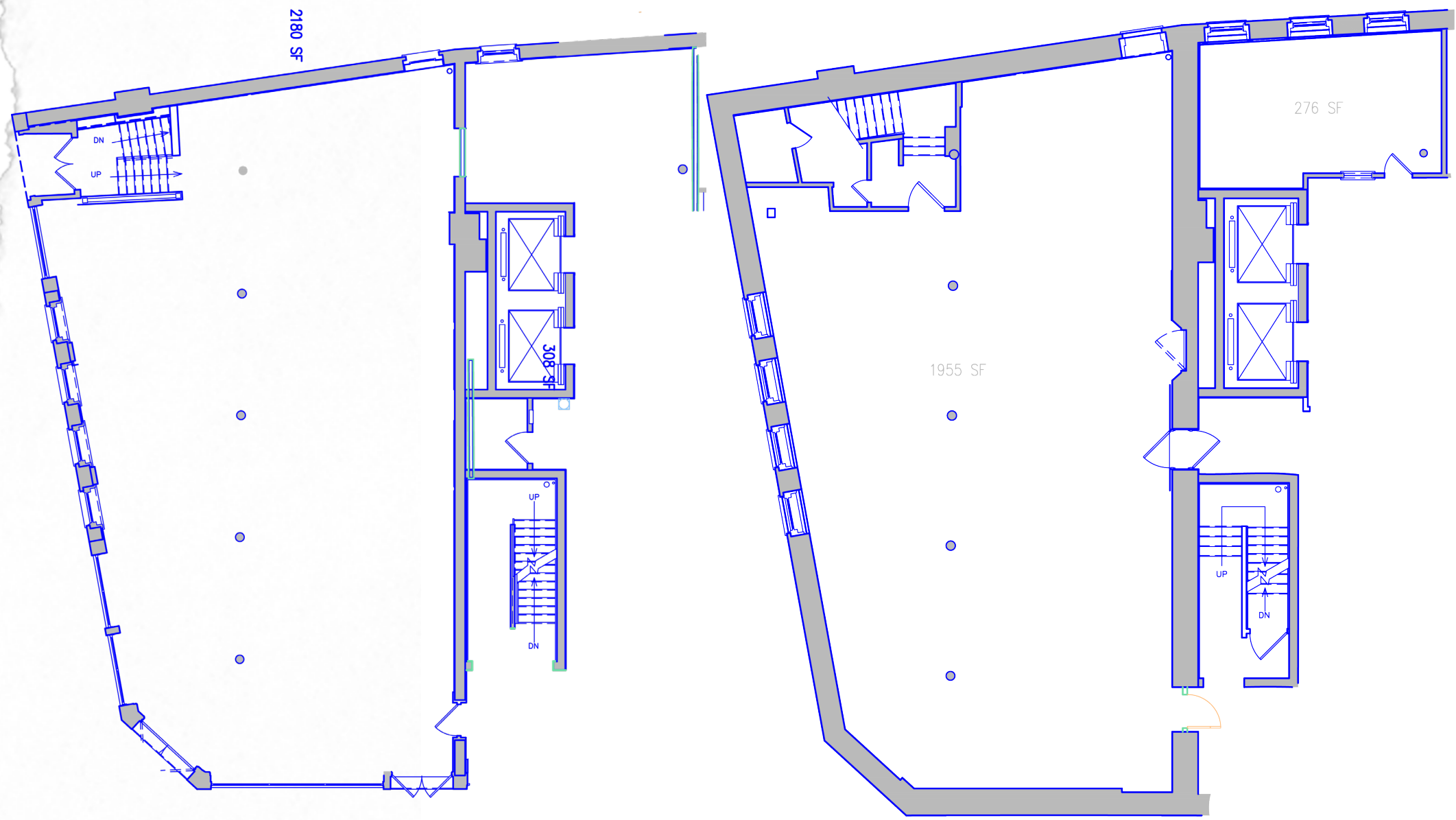
Stefani Schultz

TABLE OF CONTENTS

OBJECTIVES	2
EXSISTING CONDITIONS	3
MOOD BOARD	4
AGECENCIES & BUBBLE DIAGRAMS	5
ZONING	6
FIRST FLOOR PLAN	7
ENTRANCE	8
MAIN DINING	9
LOUNGE	10
ADA BAR	11
BAR	12
BAR ANTHROPOMETRICS	13 & 14
FINISHES & FURNITURE	15
BASEMENT FLOOR PLAN	16
FIRST FLOOR REFLECTED CEILING PLAN	17
BASEMENT REFLECTED CEILING PLAN	18
LIGHT MAPPING	19 & 20
FINAL BOARD	21 & 22

CONCEPT

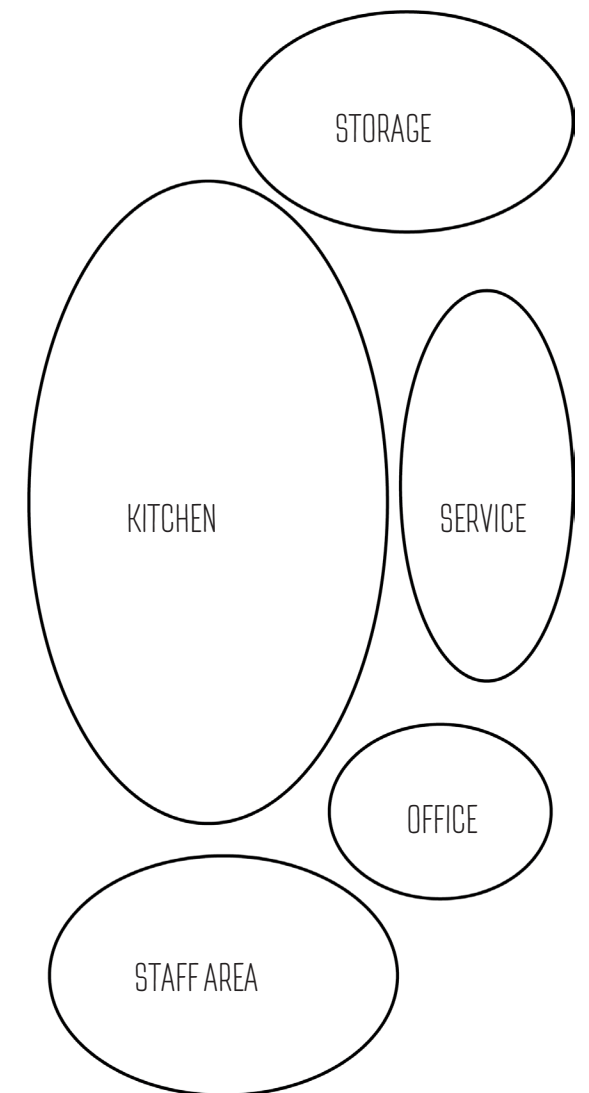
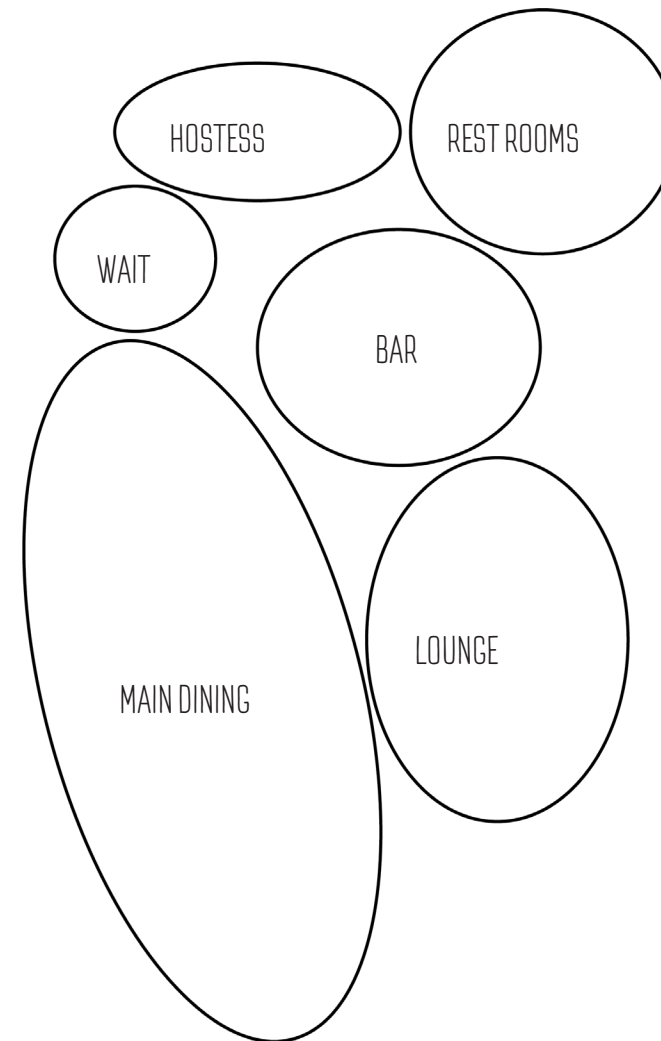
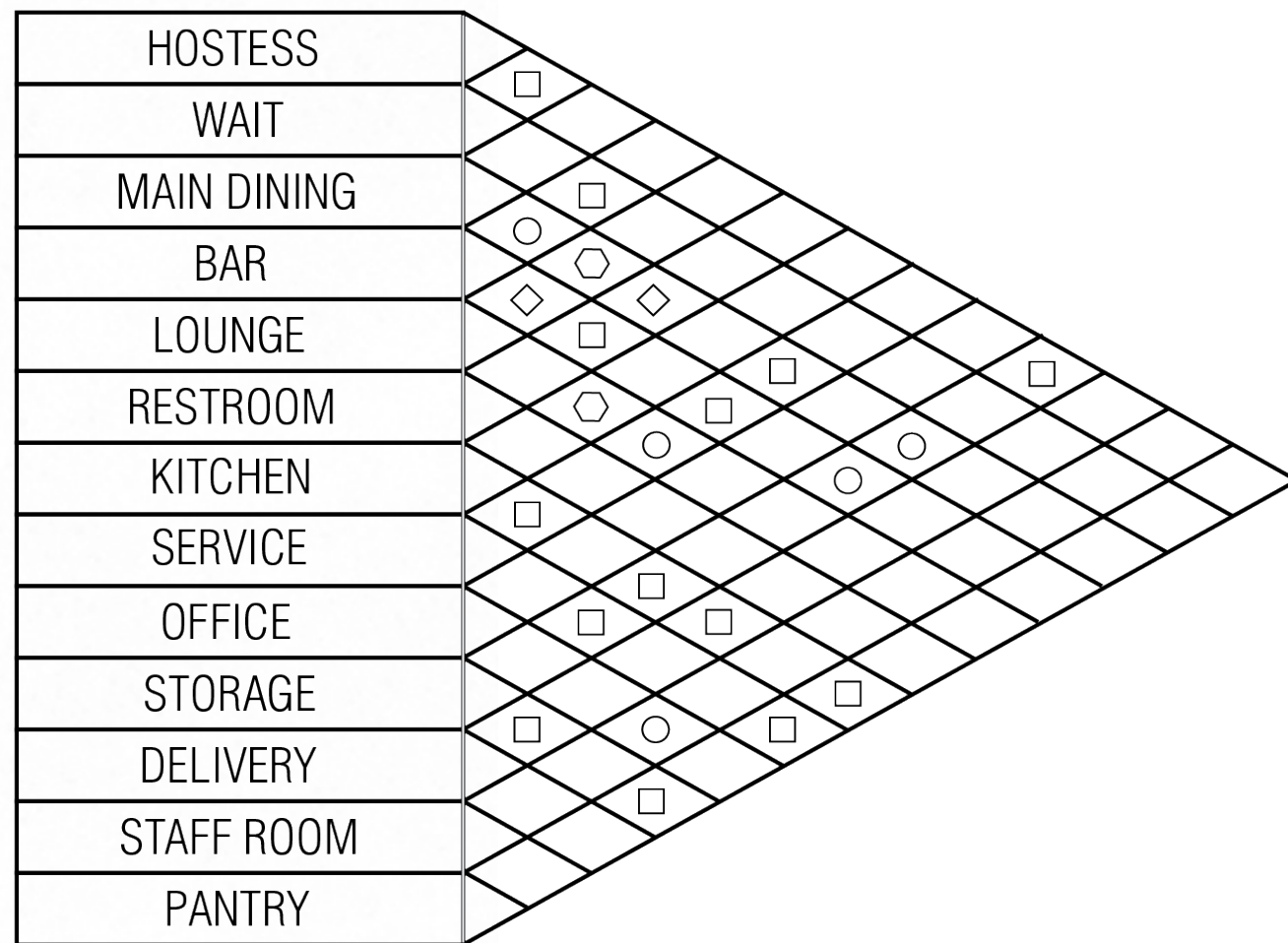
AURA IS A COMMUNITY KITCHEN THAT STRIVES TO COLLABORATE WITH AS MANY LOCAL ARTISAN MAKERS, AND FARMERS AS POSSIBLE. CITY RESTURANT GROUPS NEWEST DINING EXPERIENCE WILL BE LOCATED AT 151 ST. PAUL STREET IN THE HISTORIC ST. PAUL QUARTER, EMPHASIZING THE FARM TO TABLE EXPERIENCE THE DESIGN WILL GIVE PEOPLE AN INTERACTION WITH NOT ONLY LOCALLY SOURCED FOOD, DRINK, BUT ALSO MATERIALS AND PEOPLE. CREATING A CONNECTION BETWEEN STAFF AND THE DINER IS WHAT BRINGS THIS EXPERIENCE TOGETHER. WITH A GOAL TO BOOST THE CITY'S ECONOMY AND CREATE A SENSE OF COMMUNITY AND PRIDE ONCE AGAIN TO REPEAT HISTORY IN THE ST. PAUL QUARTER.

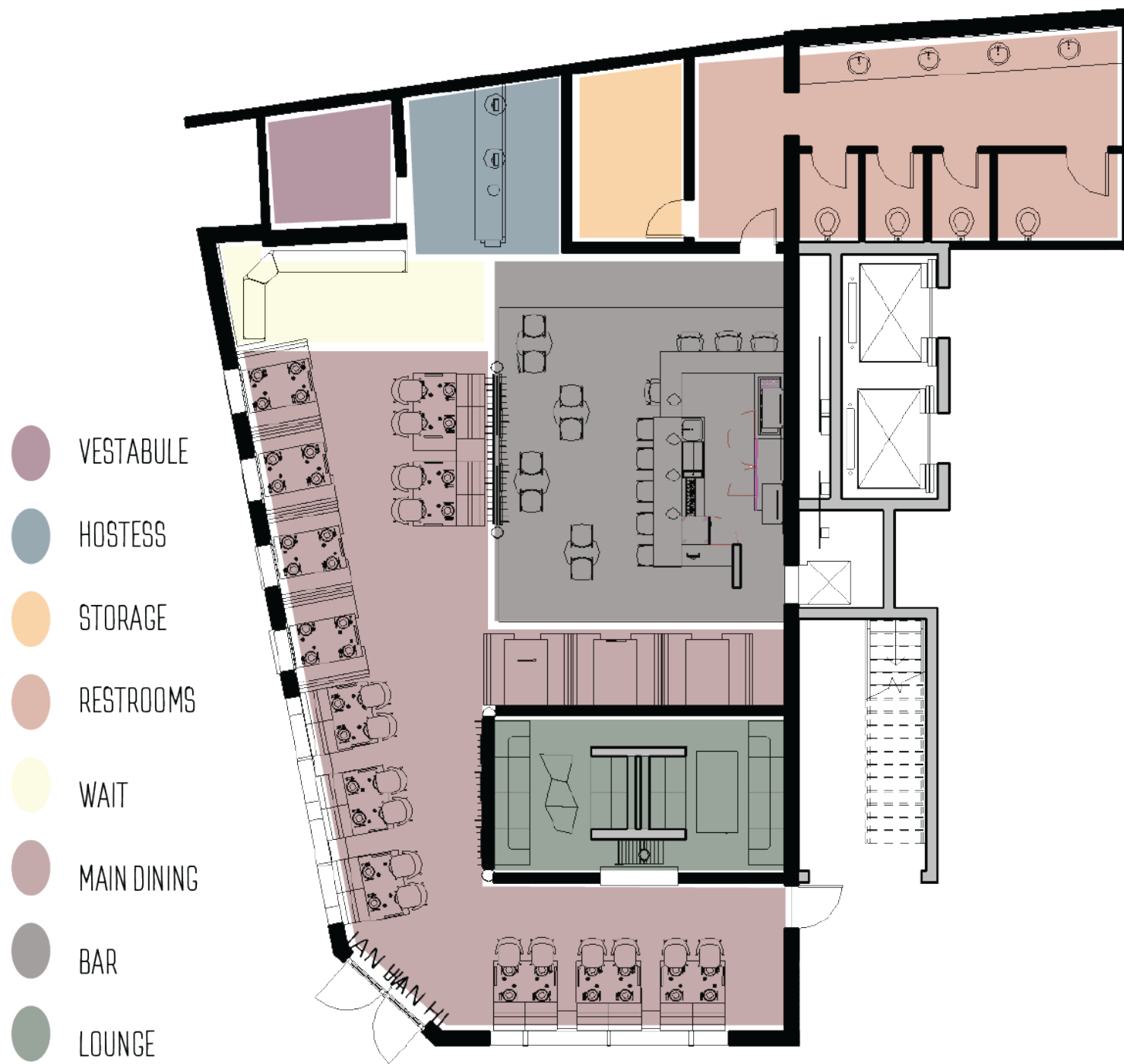




KEY

- PRIMARY
- SECONDARY
- ◇ UNDESIREABLE
- ⬡ VISUAL/ACCOUSTIC PRIVACY







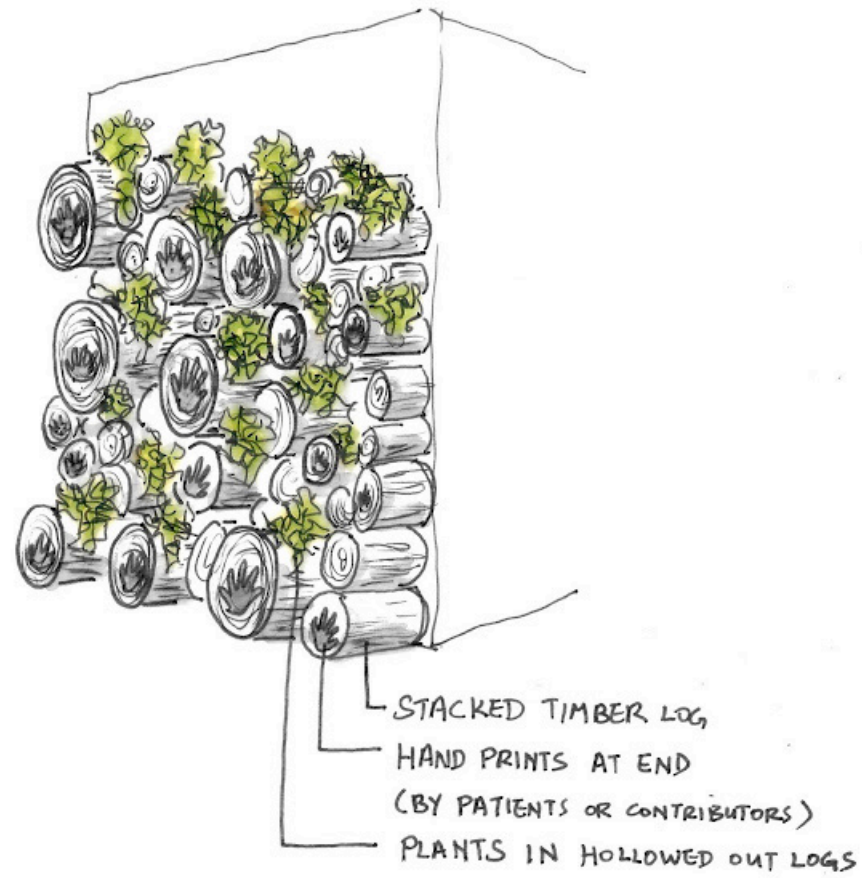




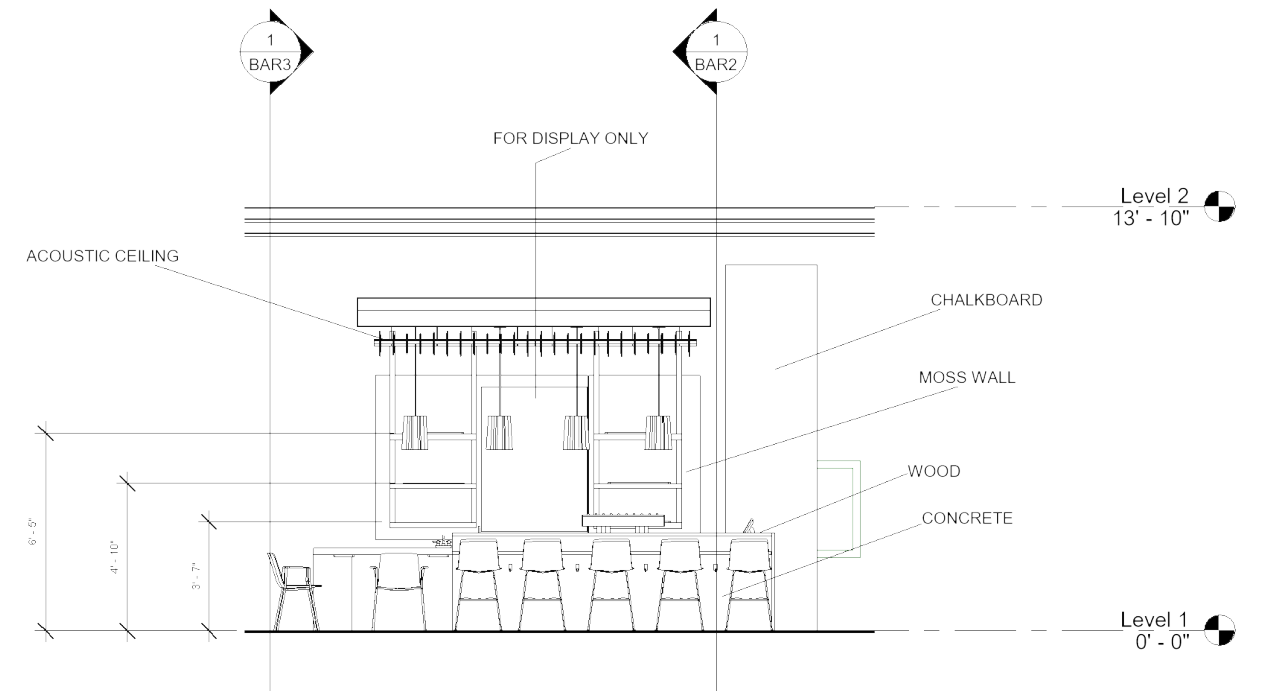




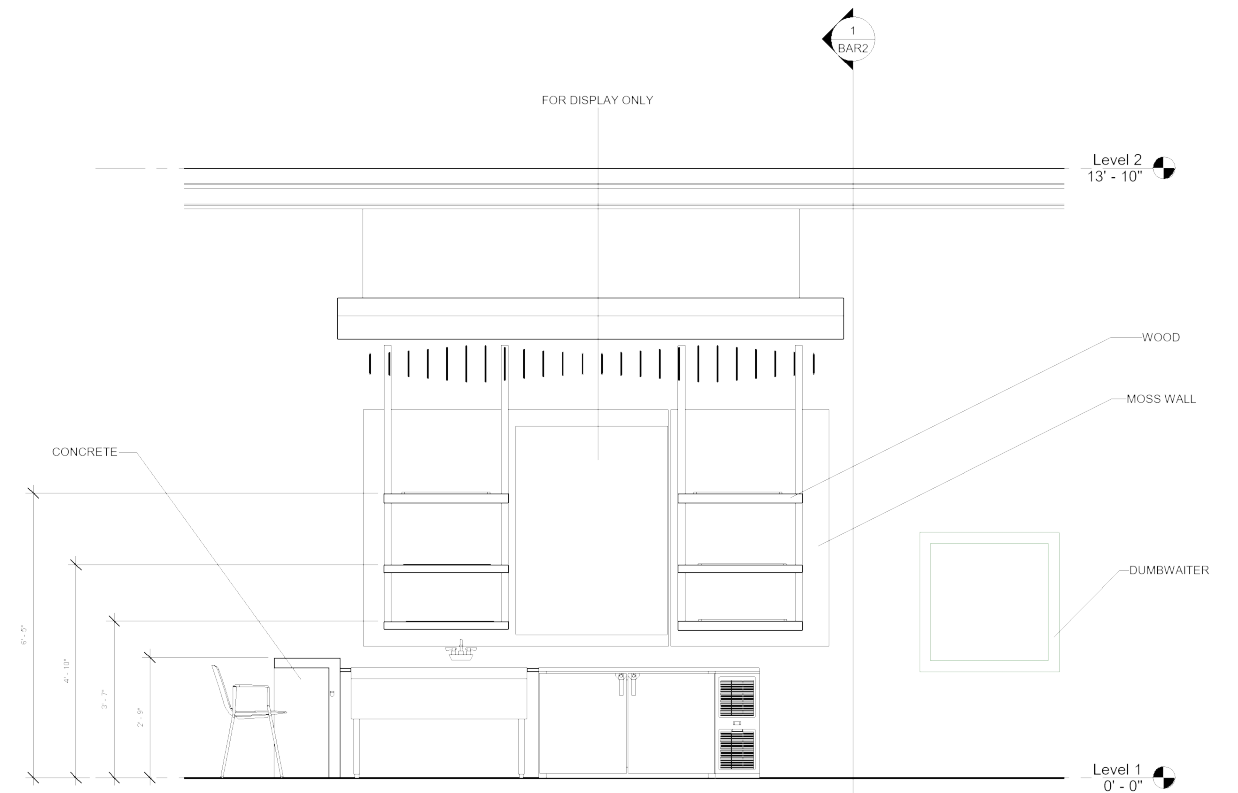




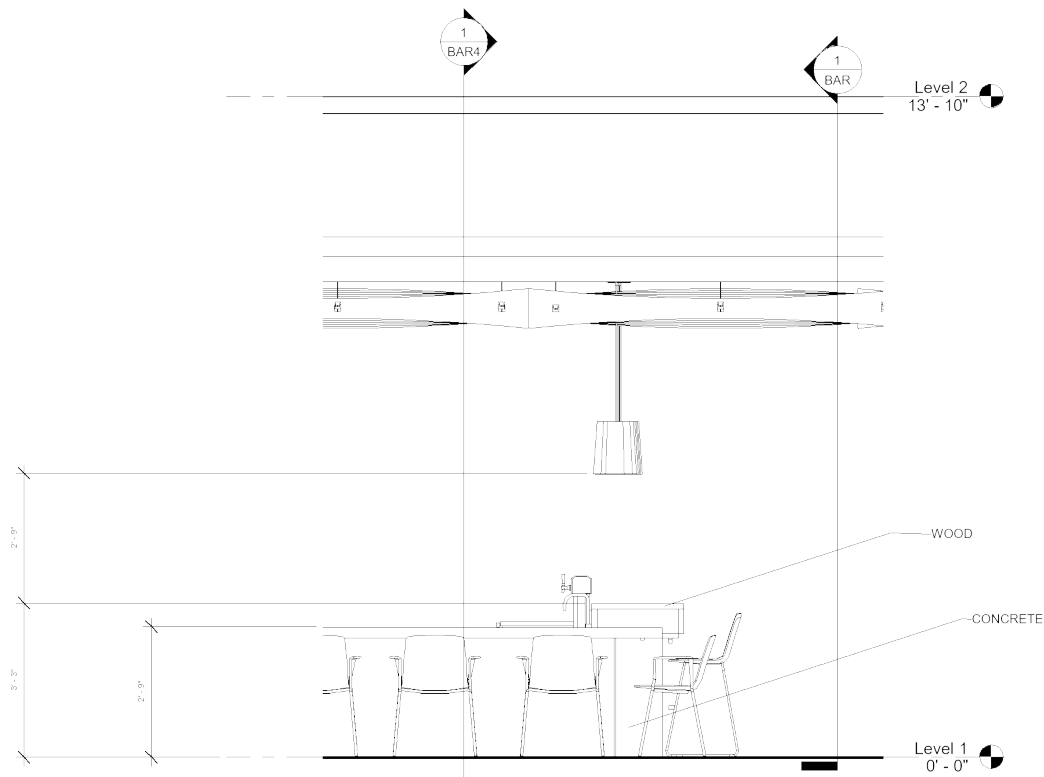
SECTION 1



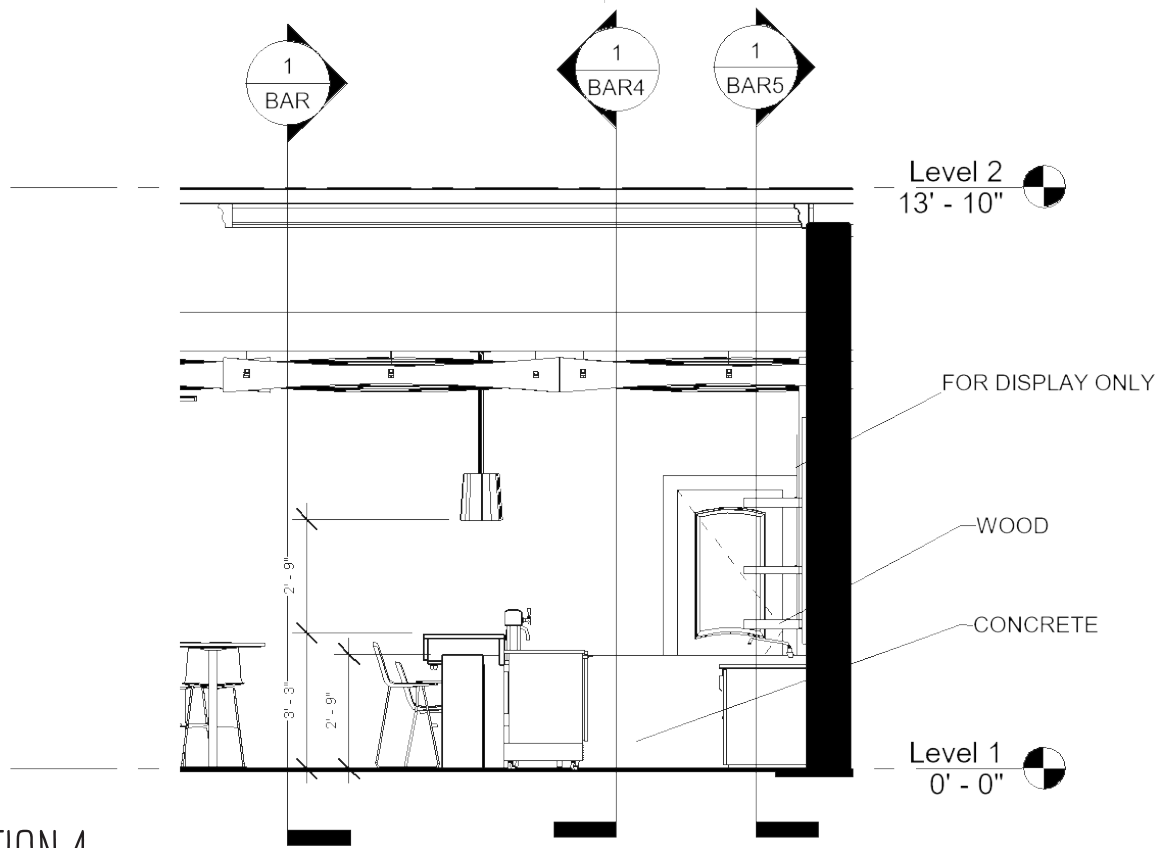
SECTION 2



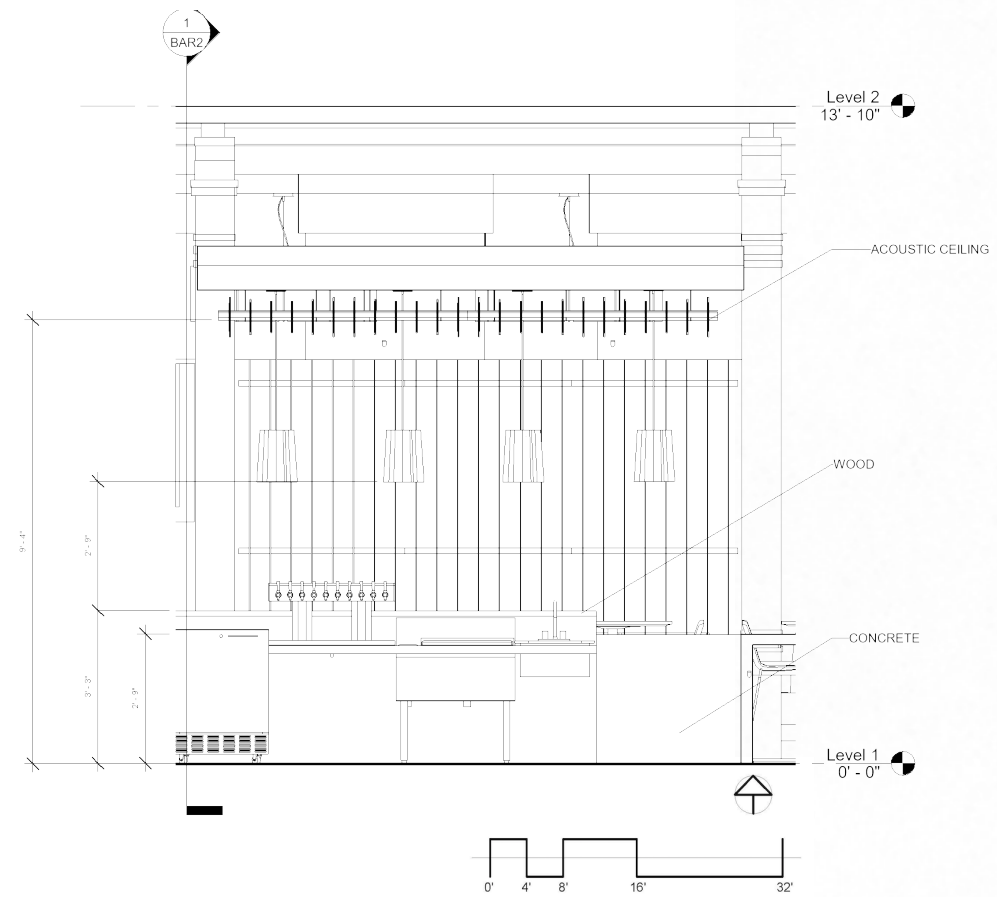
SECTION 3



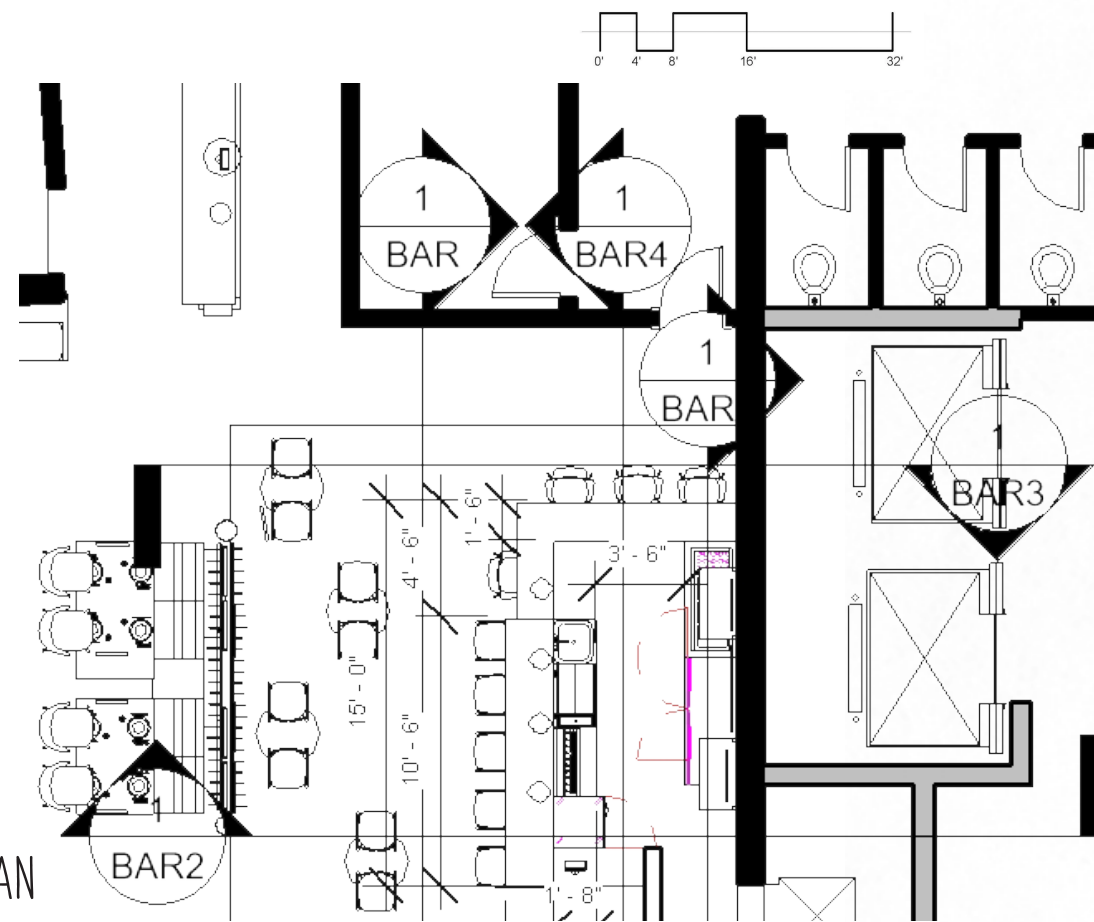
SECTION 4

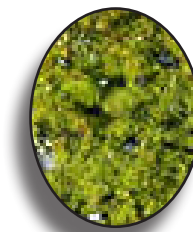


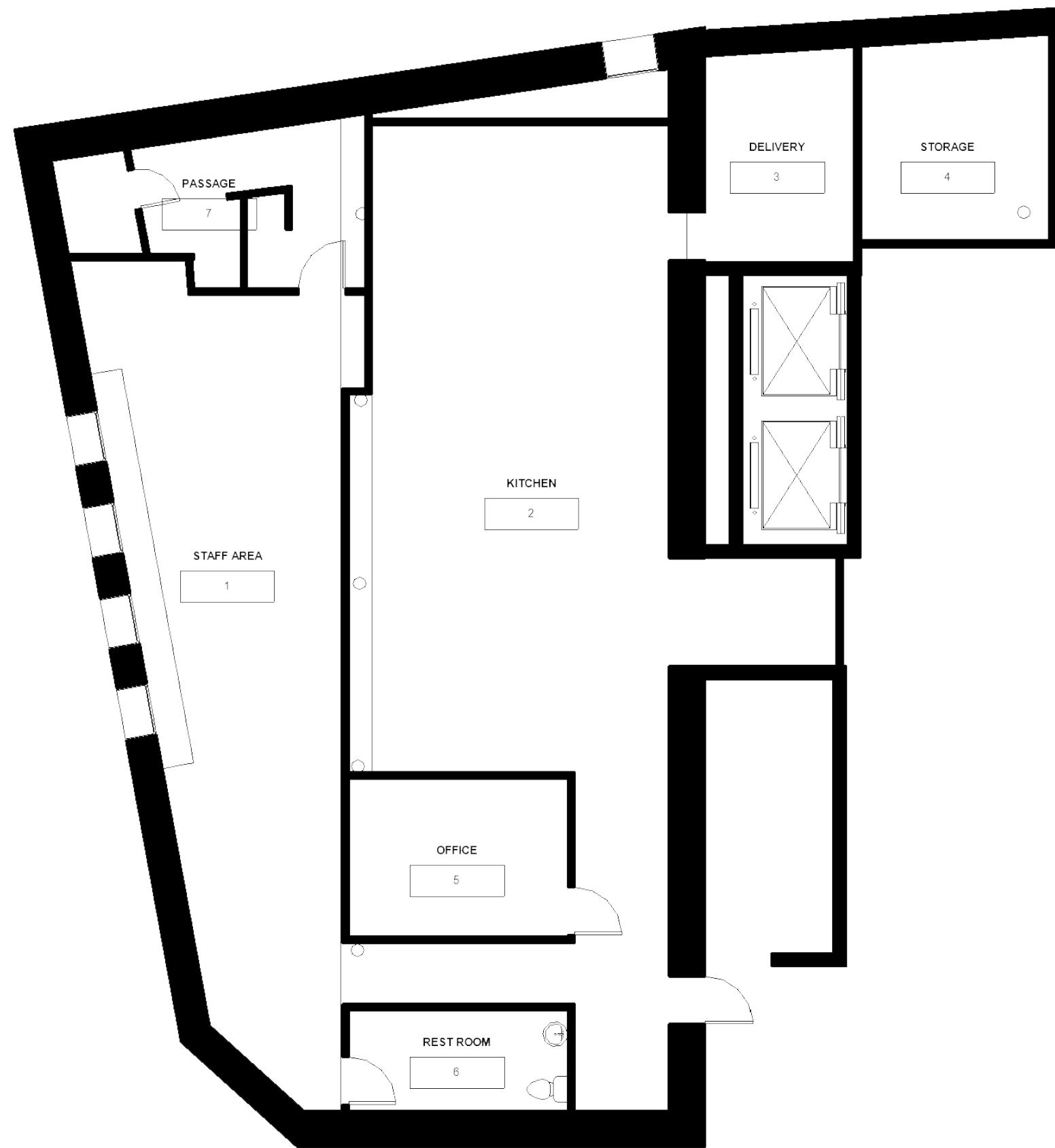
SECTION 5

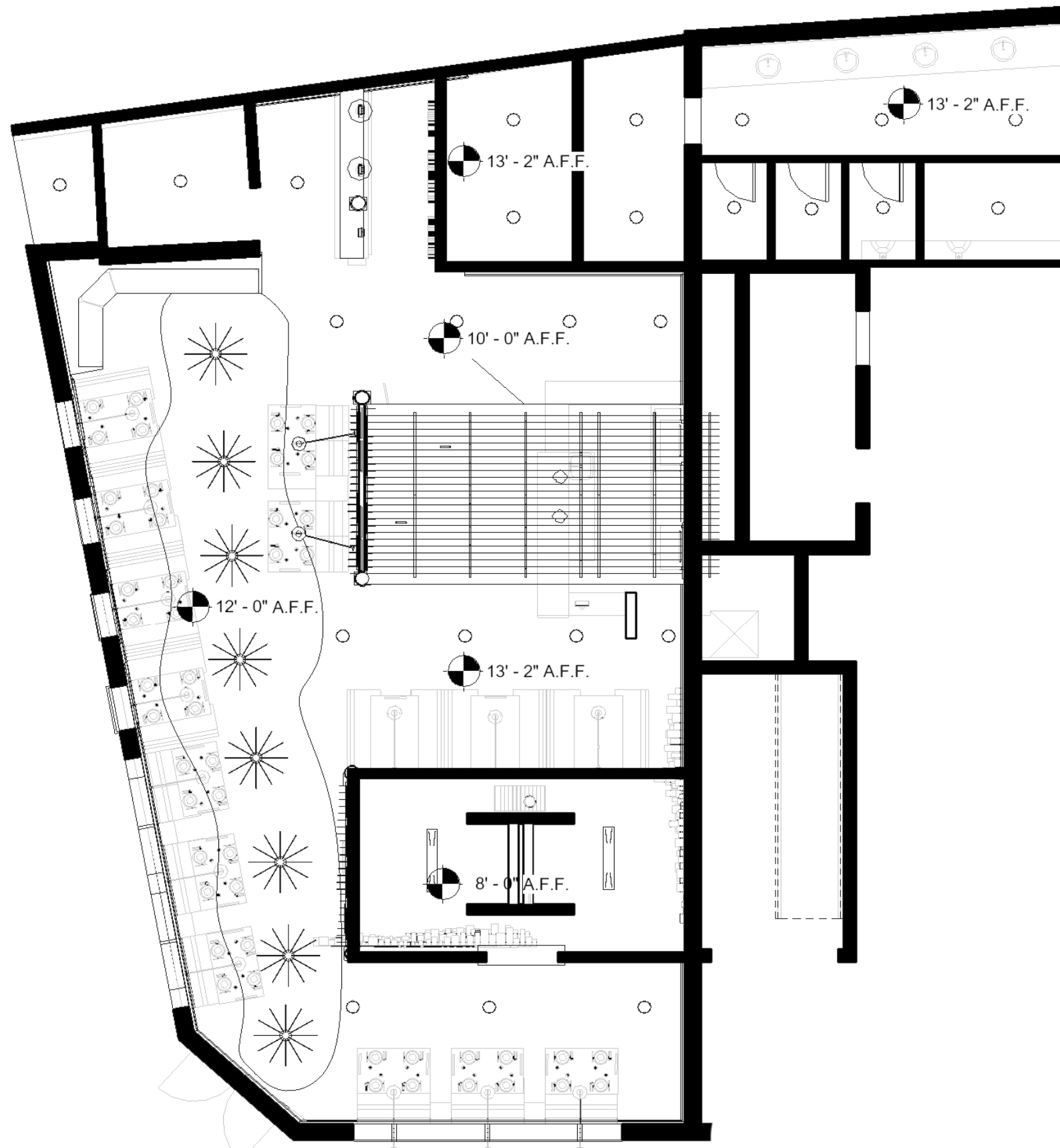


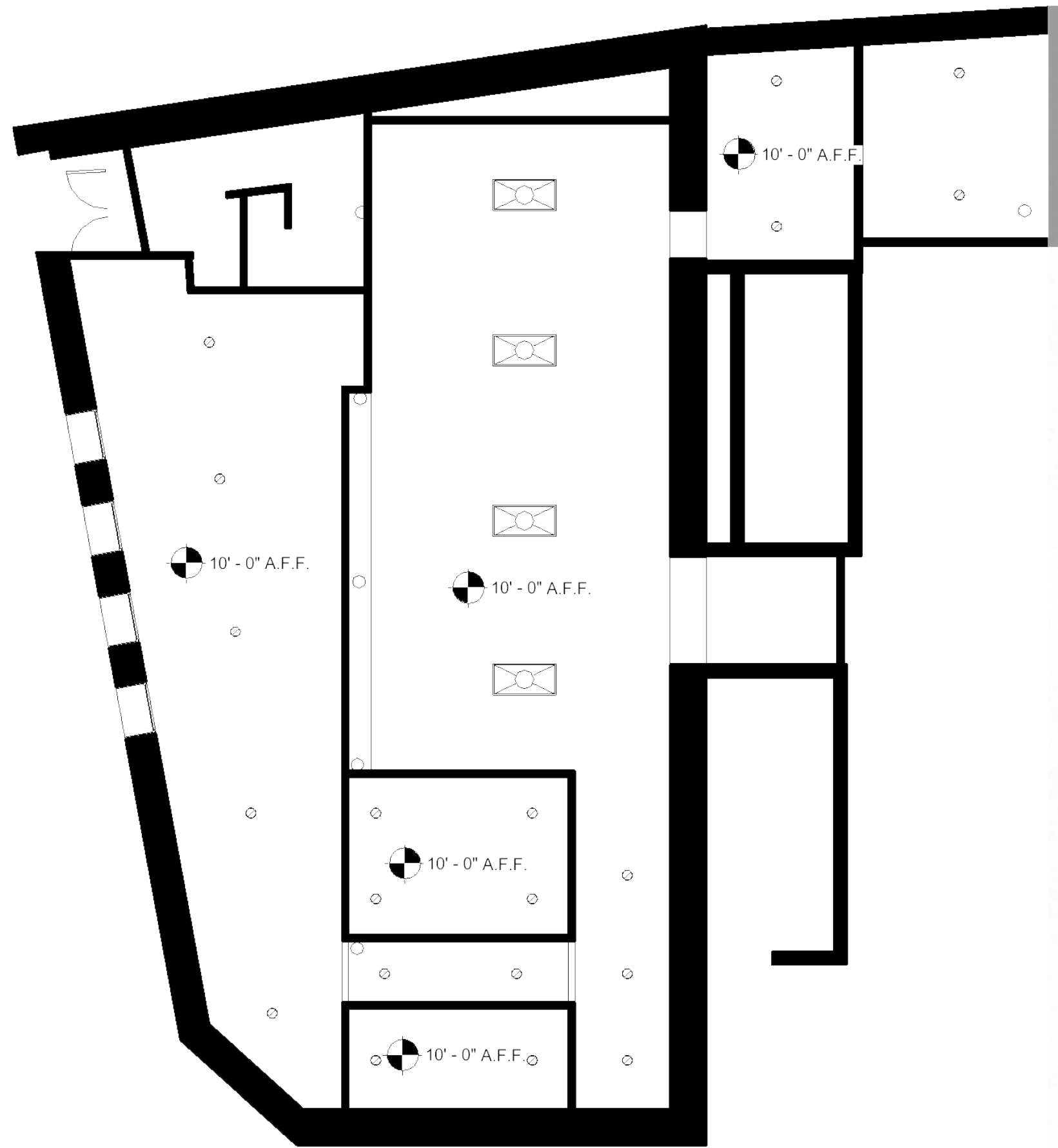
FLOORPLAN













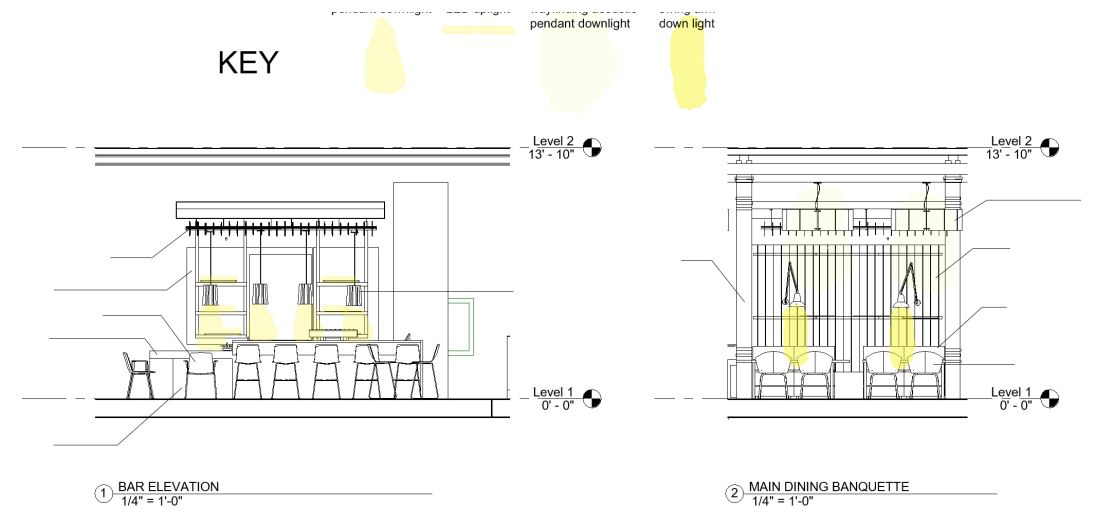


1 Level 1
1" = 10'-0"

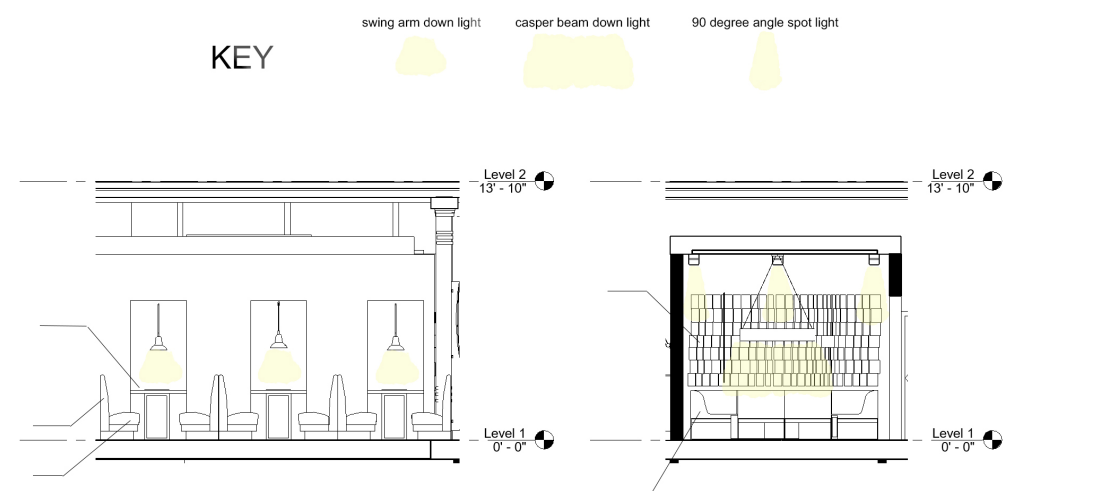
KEY

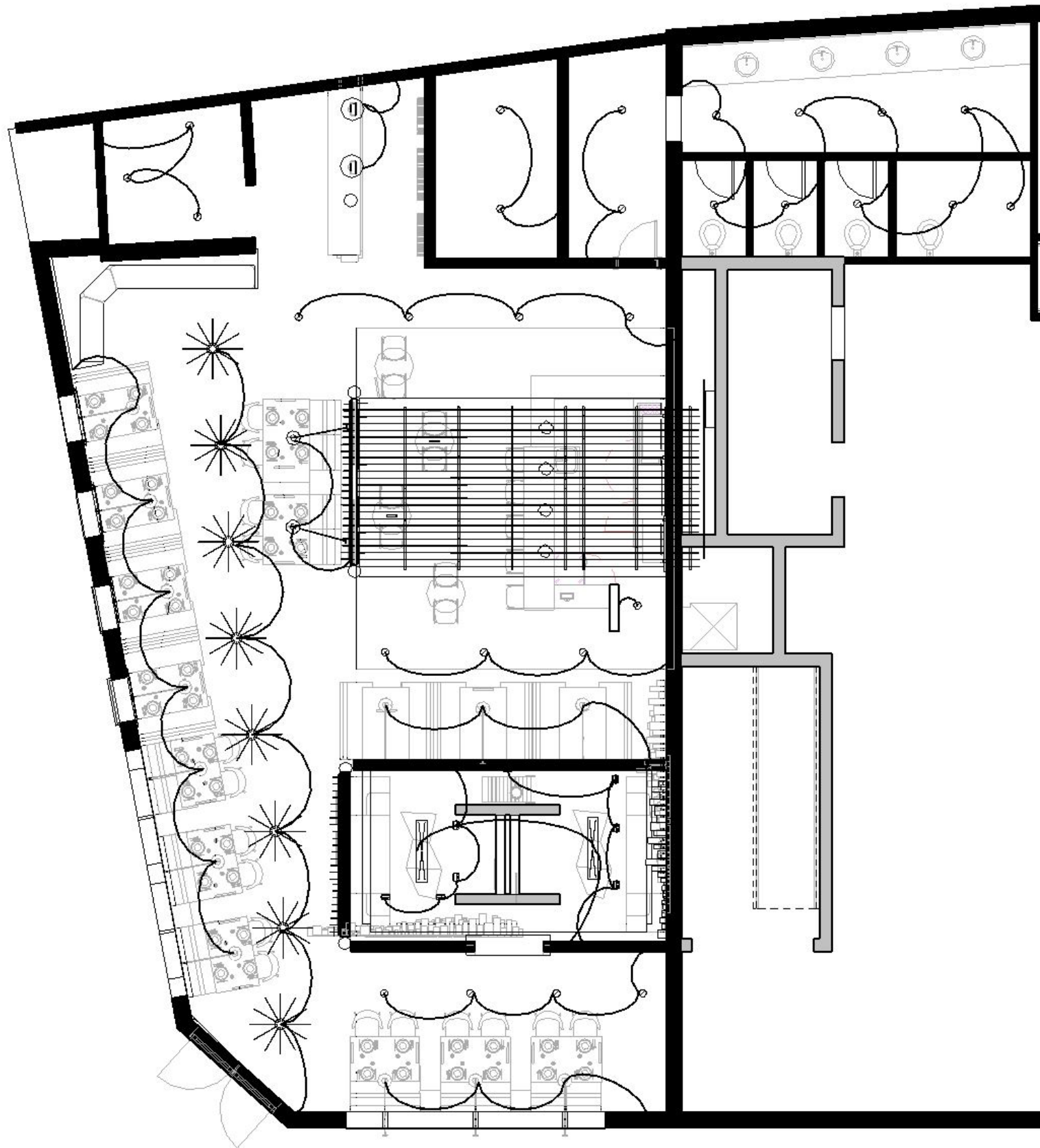
-  90 degree down spot light
-  recessed can lighting
-  wayfinding acoustic downlight
-  hanging pendant down light
-  strip LED uplight

KEY



KEY





SYMBOL	QTY	DESCRIPTION	LAMPS	LUMENS	WATTS
	26	UP/DOWN LED STRIP LIGHT	6	5700K	3.4W
★	8	DIFFUSED UP/DOWN LIGHT	1	3000K	9W
○	2	DIFFUSED DOWNLIGHT	1	3000K	9W
◊	4	DIFFUSED DOWNLIGHT	1	3000K	9W
▬	2	DIFFUSED DOWNLIGHT	2	3000K	9W
●	28	DIFFUSED DOWNLIGHT	1	3000K	65W
⦿	15	DIRECTIONAL DOWNLIGHT	1	3500K	100W
◼	6	DIRECTIONAL DOWNLIGHT	3	3000K	17W



EAT . DRINK . LOCAL
AURA

St. Paul Quarter

Aura is a community kitchen that strives to collaborate with as many local artisans, makers, and farmers as possible. City restaurant groups newest dining experience will be located at 151 St. Paul Street in the historic St. Paul Quarter, emphasizing the farm to table experience the design will give people an interaction with not only locally sourced food, drink, but also materials and people. Creating a connection between staff and the diner is what brings this experience together. With a goal to boost the city's economy and create a sense of community and pride once again to repeat history in the St. Paul Quarter.

MOOD BOARD



AGENCIES

- KEY
 ◻ COMMON
 ◻ RESTROOM
 ◻ OFFICE
 ◻ STORAGE
 ◻ SERVICE
 ◻ WAIT
 ◻ LOUNGE
 ◻ MAIN DINING
 ◻ KITCHEN
 ◻ SERVICE
 ◻ OFFICE
 ◻ STORAGE
 ◻ DELIVERY
 ◻ STAFF ROOM
 ◻ PANTRY

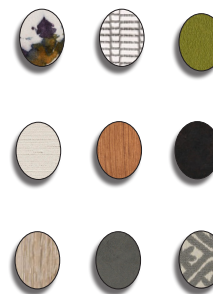
BUBBLE DIAGRAMS



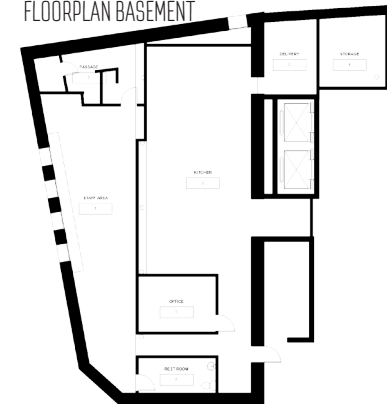
ZONING



FLOORPLAN LEVEL 1



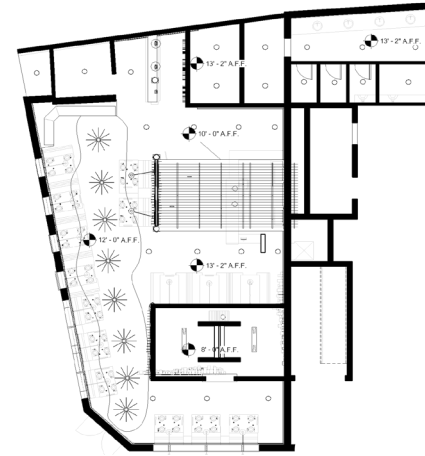
FLOORPLAN BASEMENT



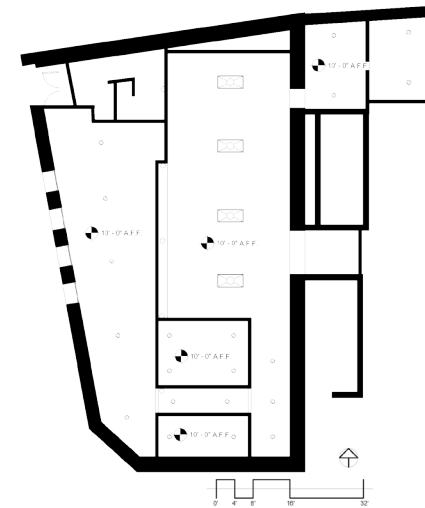
Sophomore | Spring 2018
 Hospitality Design Studio | **Restaurant Design**



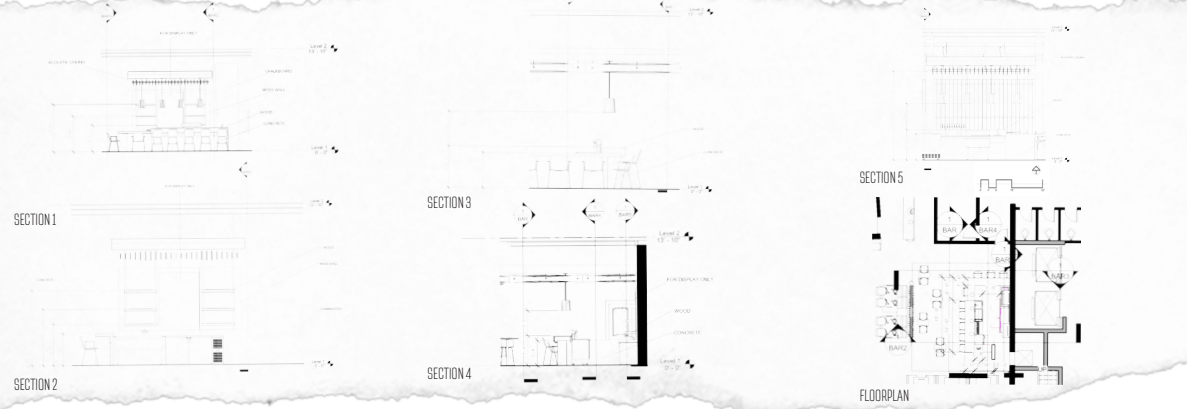
REFLECTED CEILING PLAN LEVEL 1



REFLECTED CEILING PLAN BASEMENT



BAR ANTHROPOMETRICS



Stefani Schultz





LEFT ONLY

St Paul