




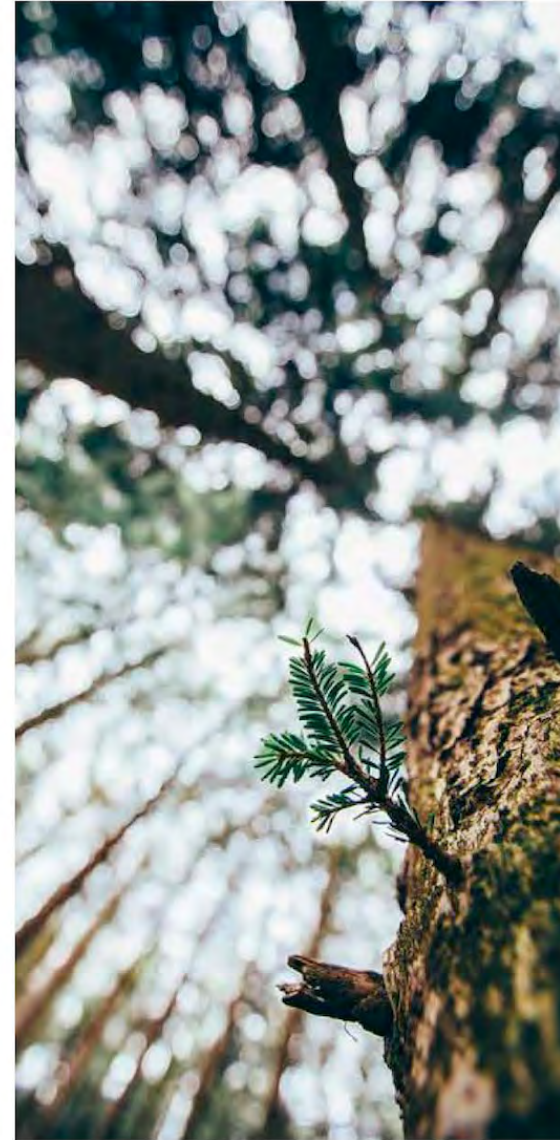
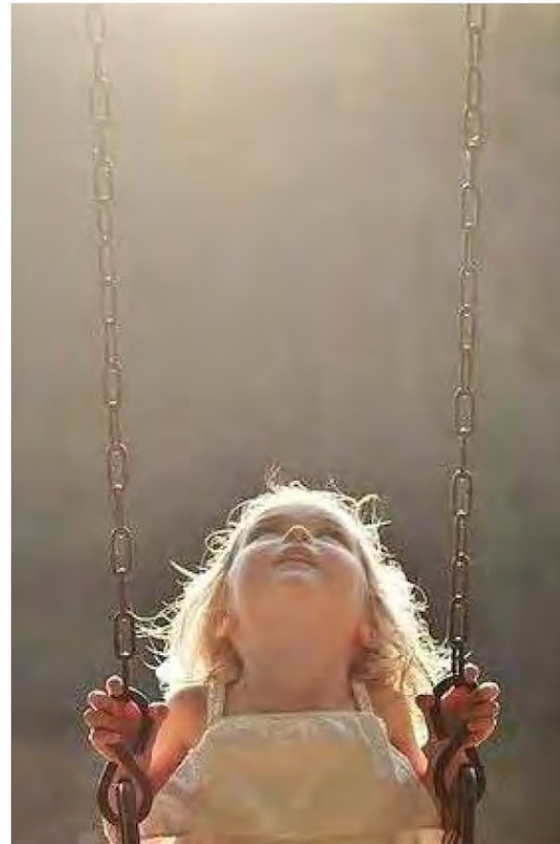
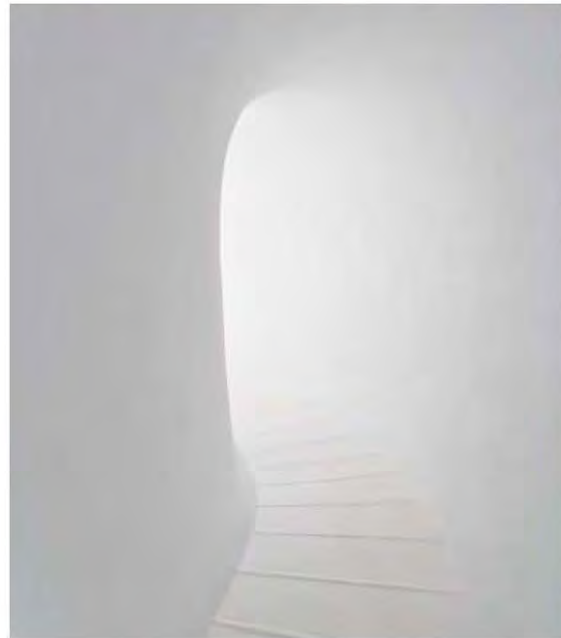
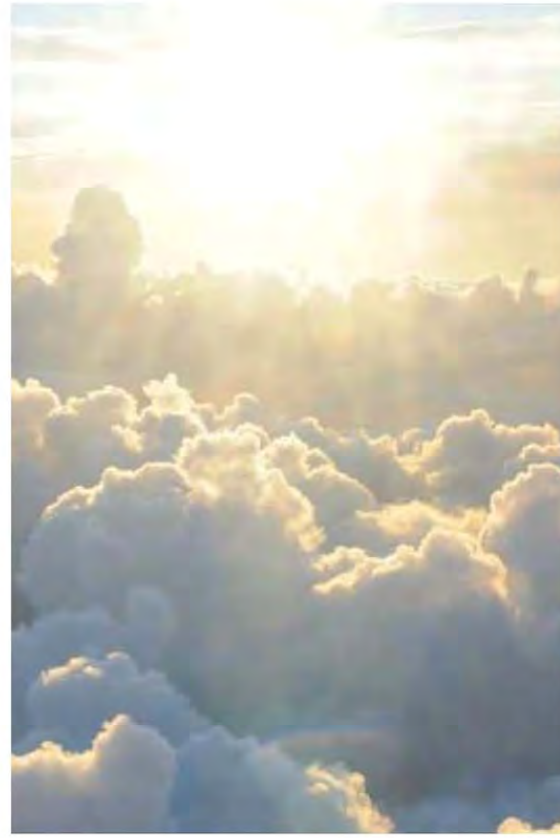
# Concept Statement

Ascension is the act of rising to a higher level. Ascension will be the underlying power that drives the design for this shelter. Once individuals enter into this facility, they will be given the tools and assistance to rise above their situations in an attempt to get back on their feet and reenter society as successful and confident members. This shelter is for people and families who are at severe lows in their lives. Many have lost their homes, jobs, kids, and have little to no money, the design for this facility will help these individuals rise above these detrimental situations.

The interior space is designed to uplift and help people rise up from their troubles, the farther up in the building a homeless individual or family travels, the farther away from homelessness they become. The first couple of floors are open to the public which include, guidance centers, daycare, tutor programs, and life skill programs to name a few. These facilities will help raise confidences, skills, motivations, and success with each day. People can walk off of the streets and take part in the various support services, retail experiences, and community opportunities. There will be a variety of living conditions from single individuals to communal or family dwellings. There will be an intermixing of private and communal areas on each floor for the living areas. As families and individuals experience success with the programs there are opportunities for them to rise within the structure to more private and independent dwellings. The upper middle class dwellings from the eighth story up will serve as a goal or inspiration to rise up in one's life and reach their individual goals.



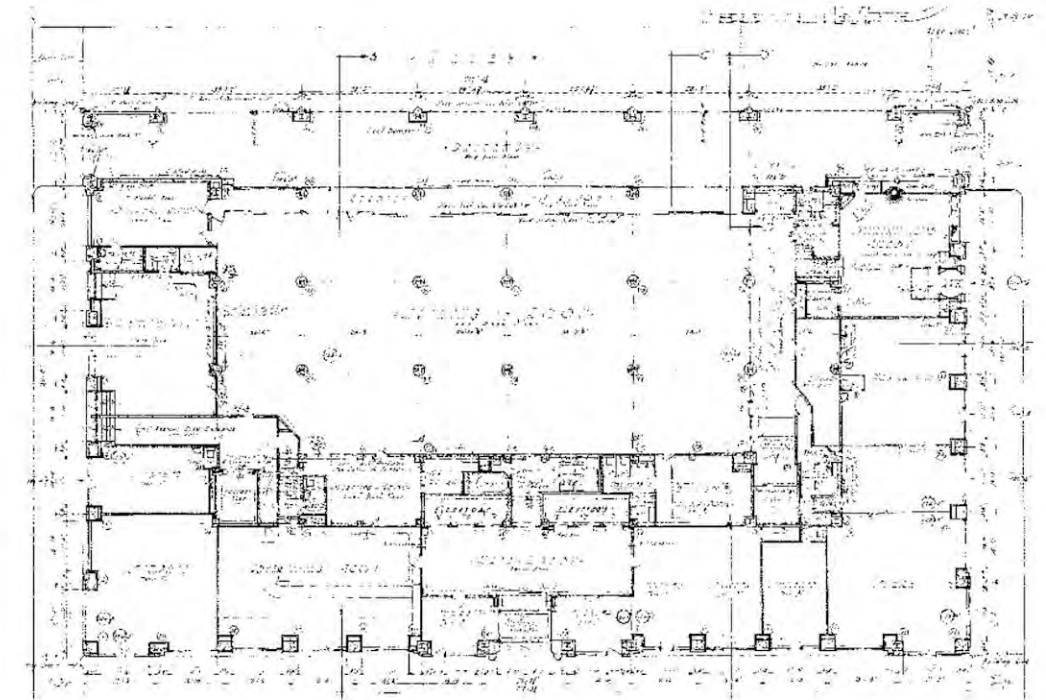
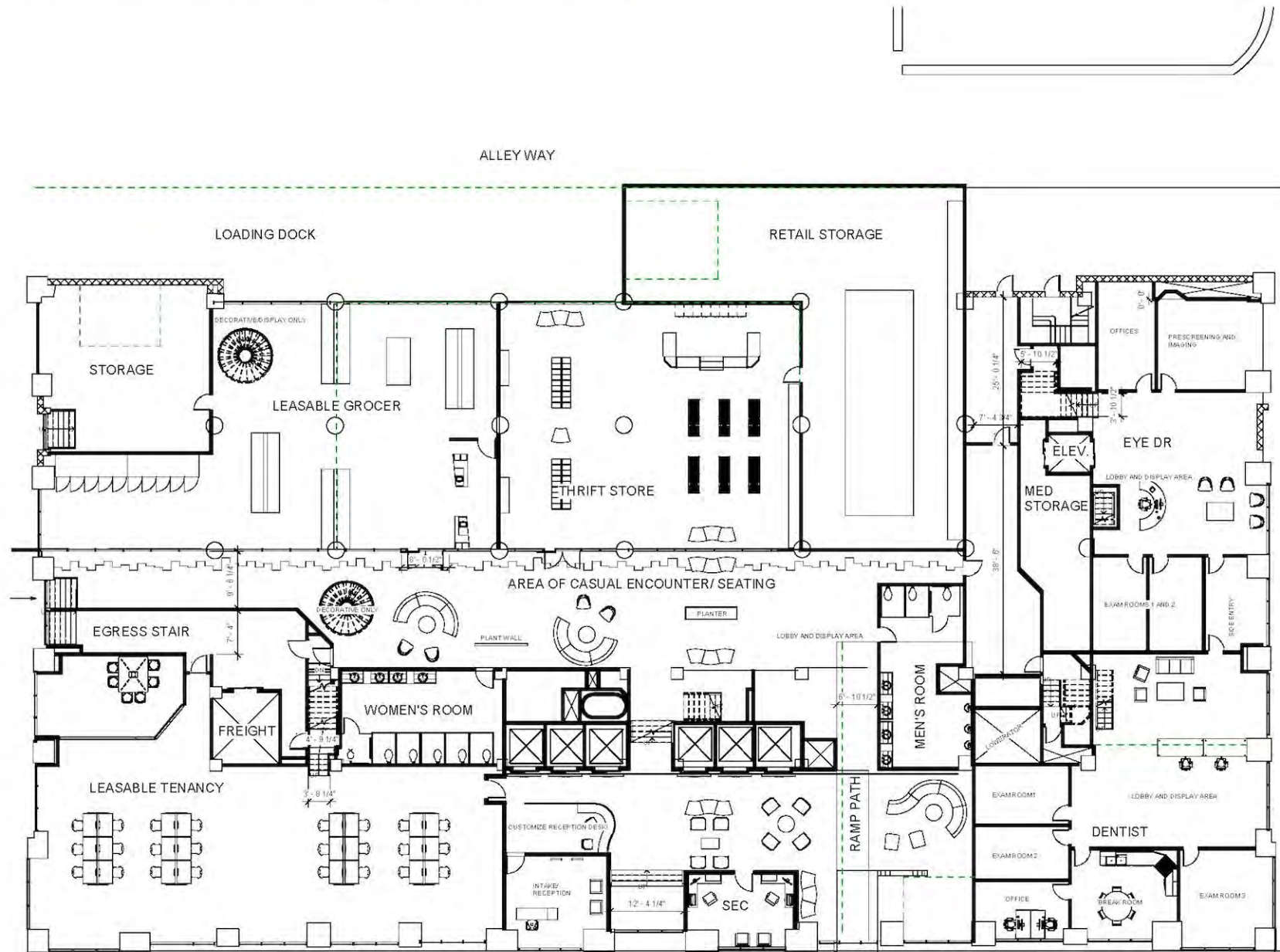




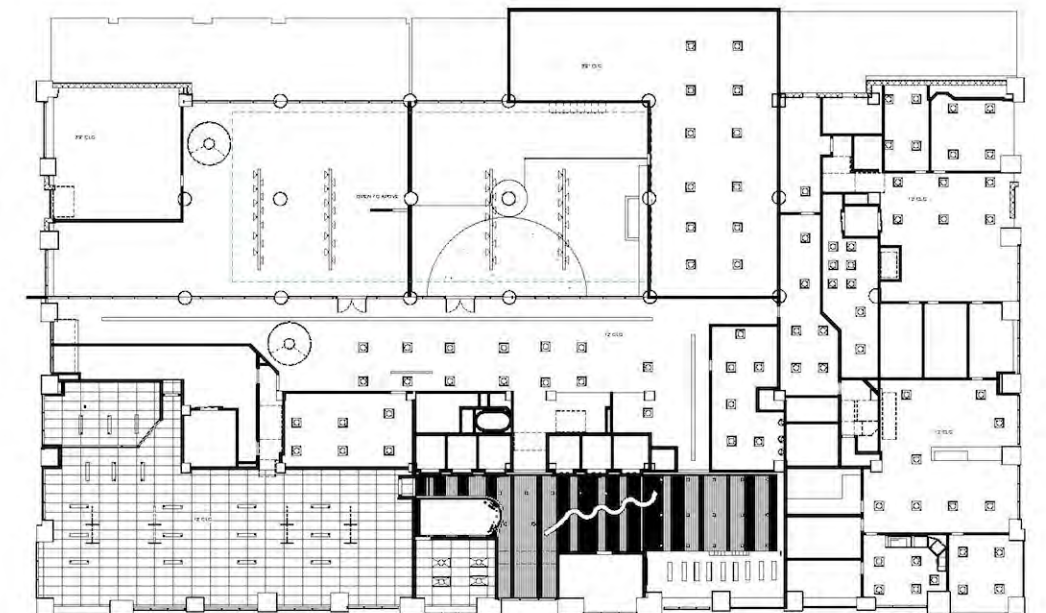


## Floor 1: Mall Center

The First Floor is the user's first interaction with Ascension's services. One can either check in with the reception desk to be placed in a home or can go past the elevators into the retail space. Two leasable retail tenancies, specifically a grocer and donation clothing store, a dentist's office, and an optometrist's office will be all available to those who walk in off the street or the residents of the upper floors. Also off of the lobby, is a leasable office space.



### Existing Conditions



### Reflected Ceiling Plan



# First Floor Lobby





# First Floor Lobby





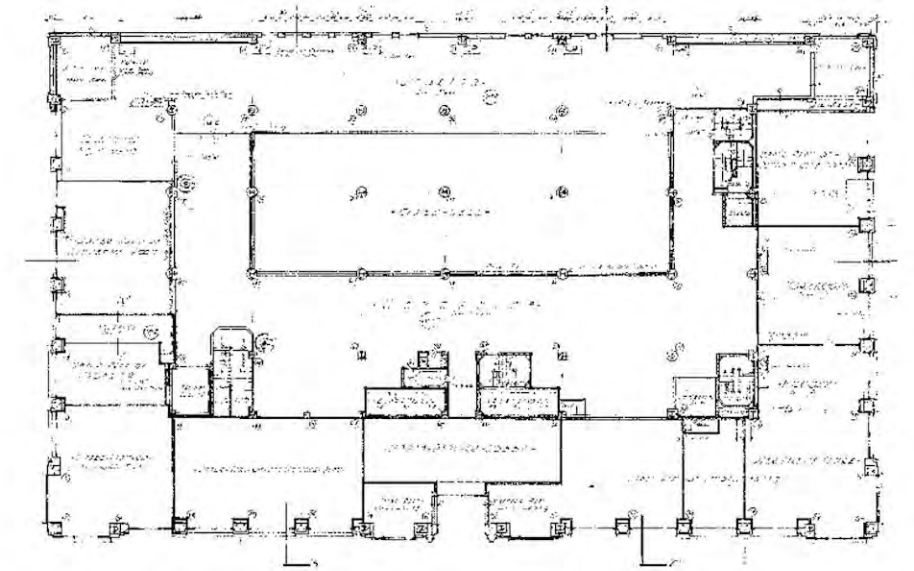
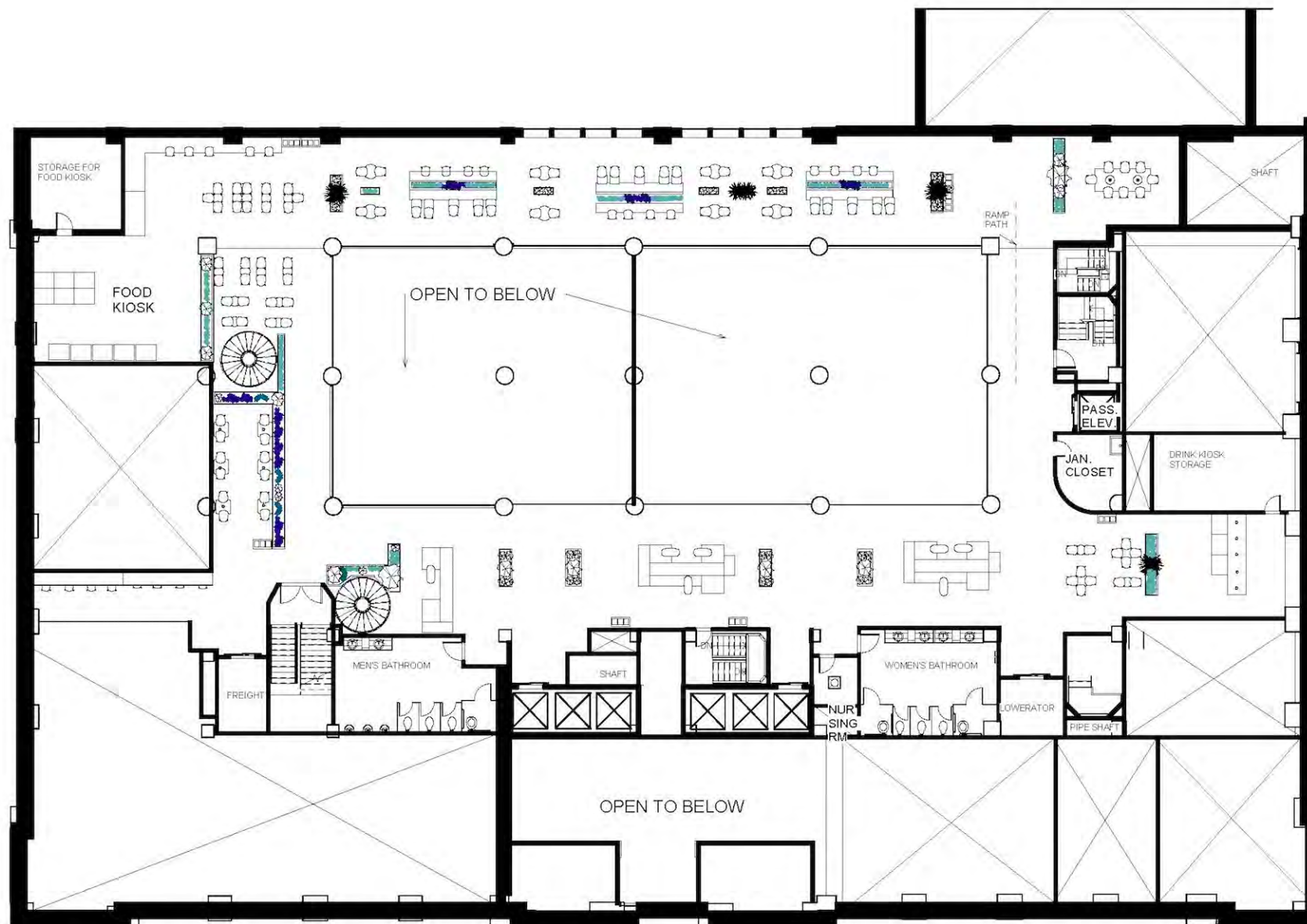
# Retail Store Front



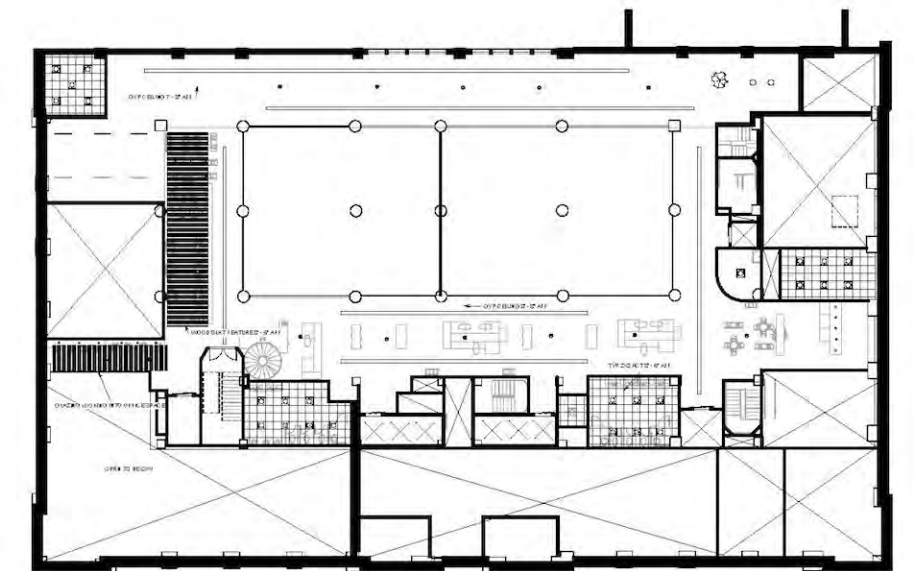


# Mezzanine Floor: Social Floor

The Mezzanine Floor is a public space for all users of the building. The floor's food and drink concessions along with different areas for collaboration or individual work make this floor a destination point within the structure. Indoor plants and their planters separate seating areas from each other and create not only a visual separation and an acoustical boundary, but they also invoke biophilia within the users of the space.



Existing Conditions



Reflected Ceiling Plan

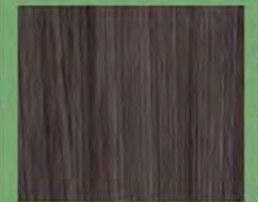
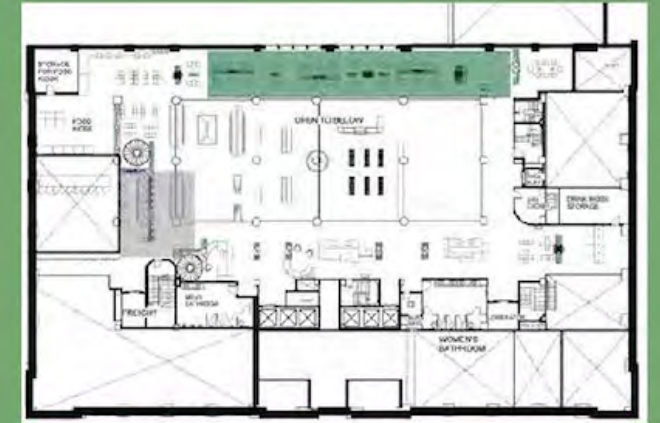


# Mezzanine View





# Mezzanine View





# Typical Elevator Lobby Feature



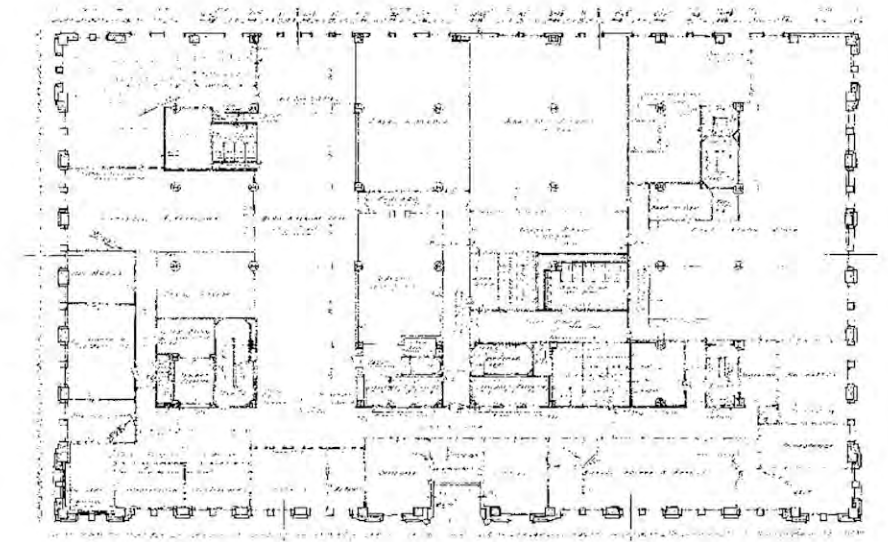
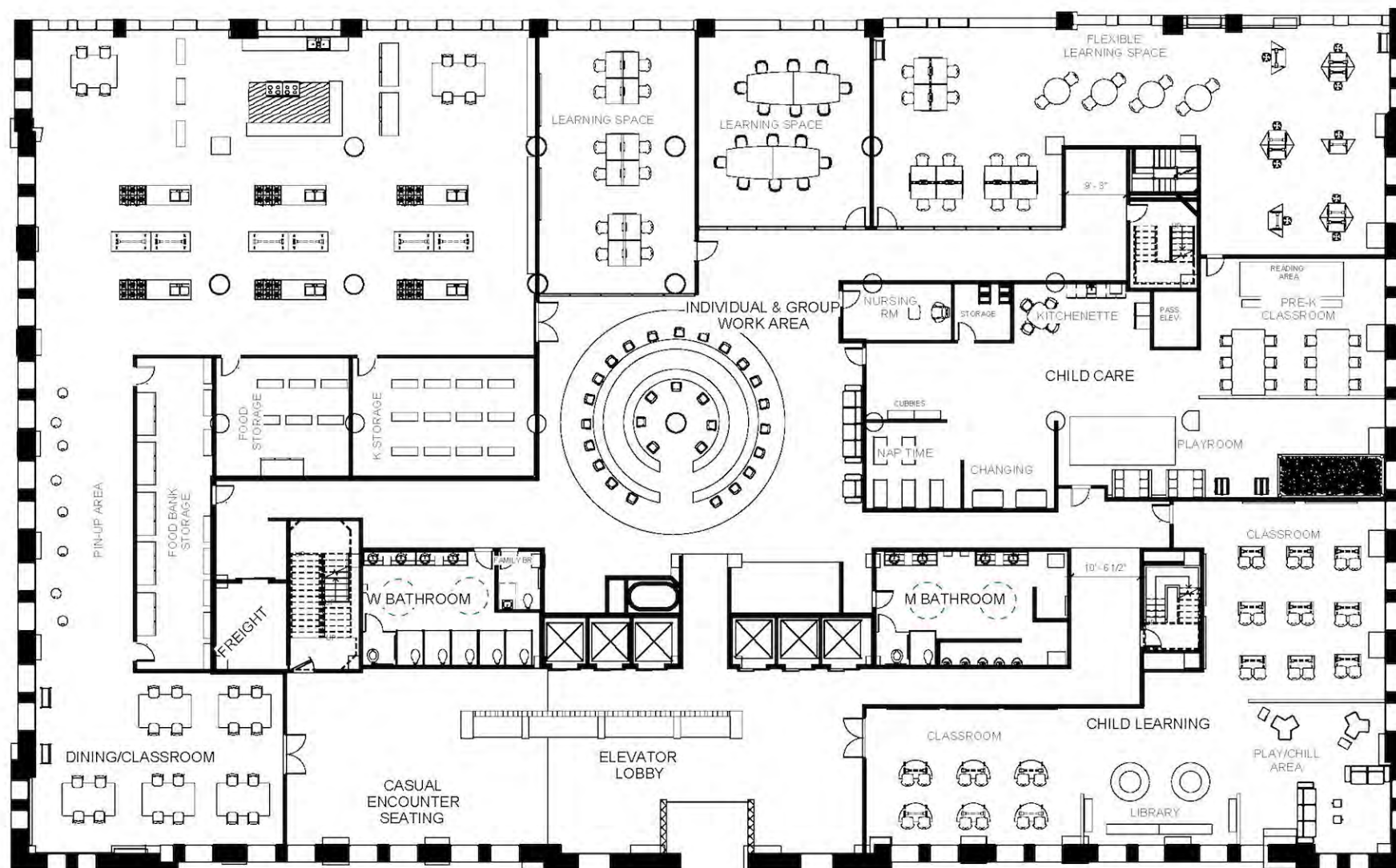
The custom seating in the elevator lobbies acts as both a visual barrier and a destination spot for casual encounter on each floor. The spaced cladding on the back of the feature allows for a continuous visual to the elevators for those using the seat to see who is approaching, which is especially helpful for the hard of hearing.



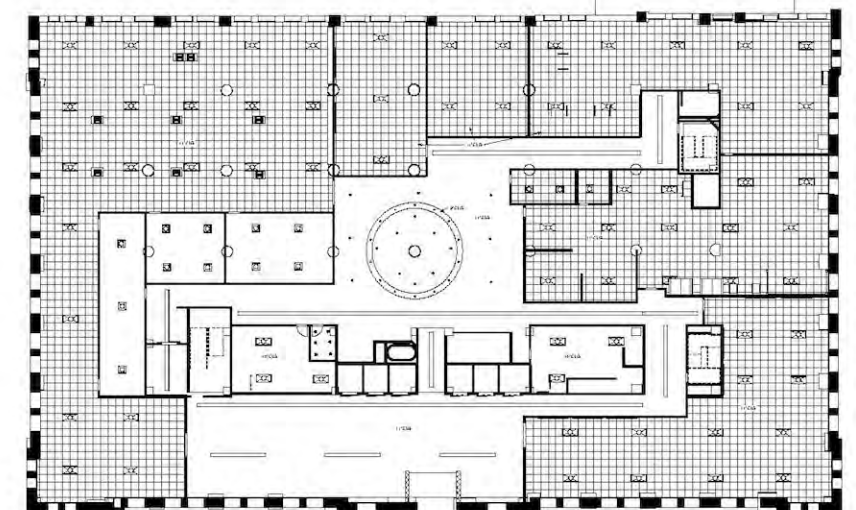


# Floor 2: Communal Education Center

The Second Floor is a public zone with facilities open to everyone including residents. This floor is used as an educational setting which include Adult and Children learning centers, a Cooking class which also provides a nutrition class and food bank, and Child Care to accommodate any adults that have children and are participating in any of the provided classes.



Existing Conditions



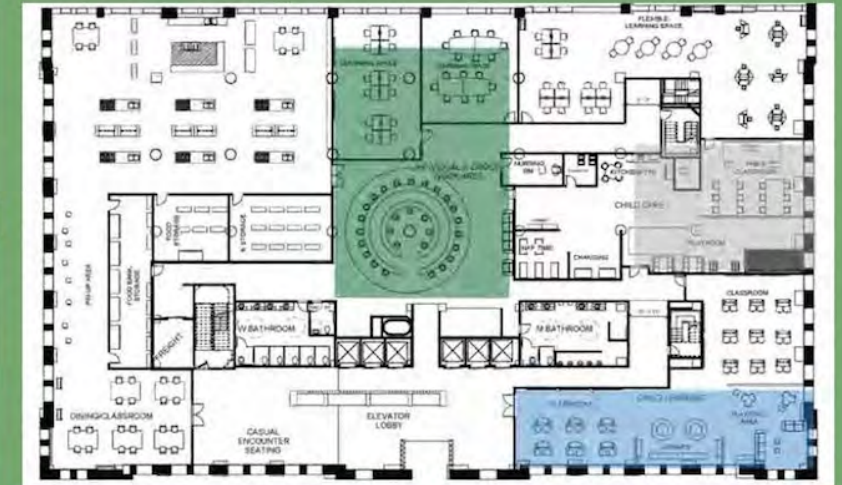
Reflected Ceiling Plan



# Communal Workspace

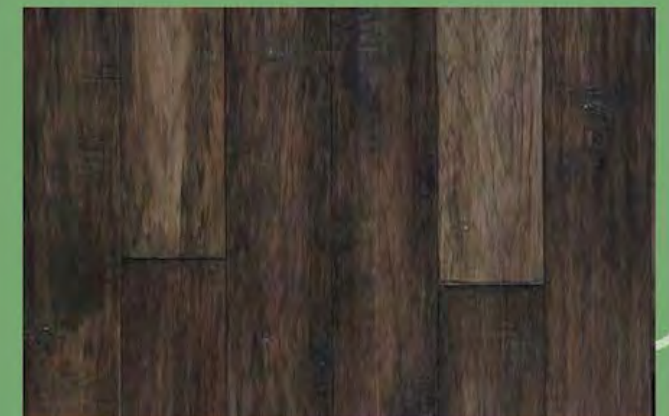
The custom work top mimics the idea of community and coming together. We made two sizes so that everyone would be able to utilize it. The circular shape allows for maximum seating.

We considered ADA and UD in this piece by making sure



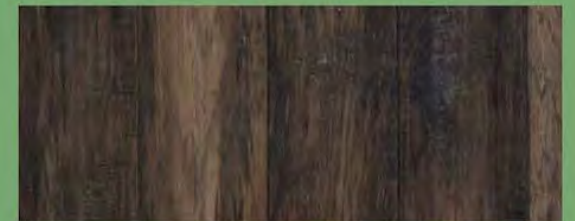


# Kitchen Classroom





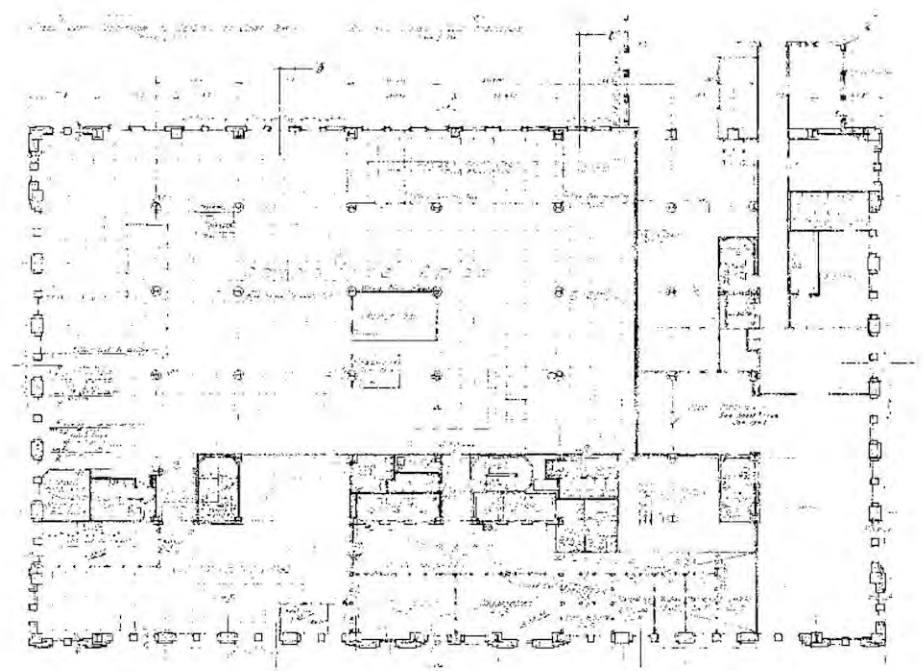
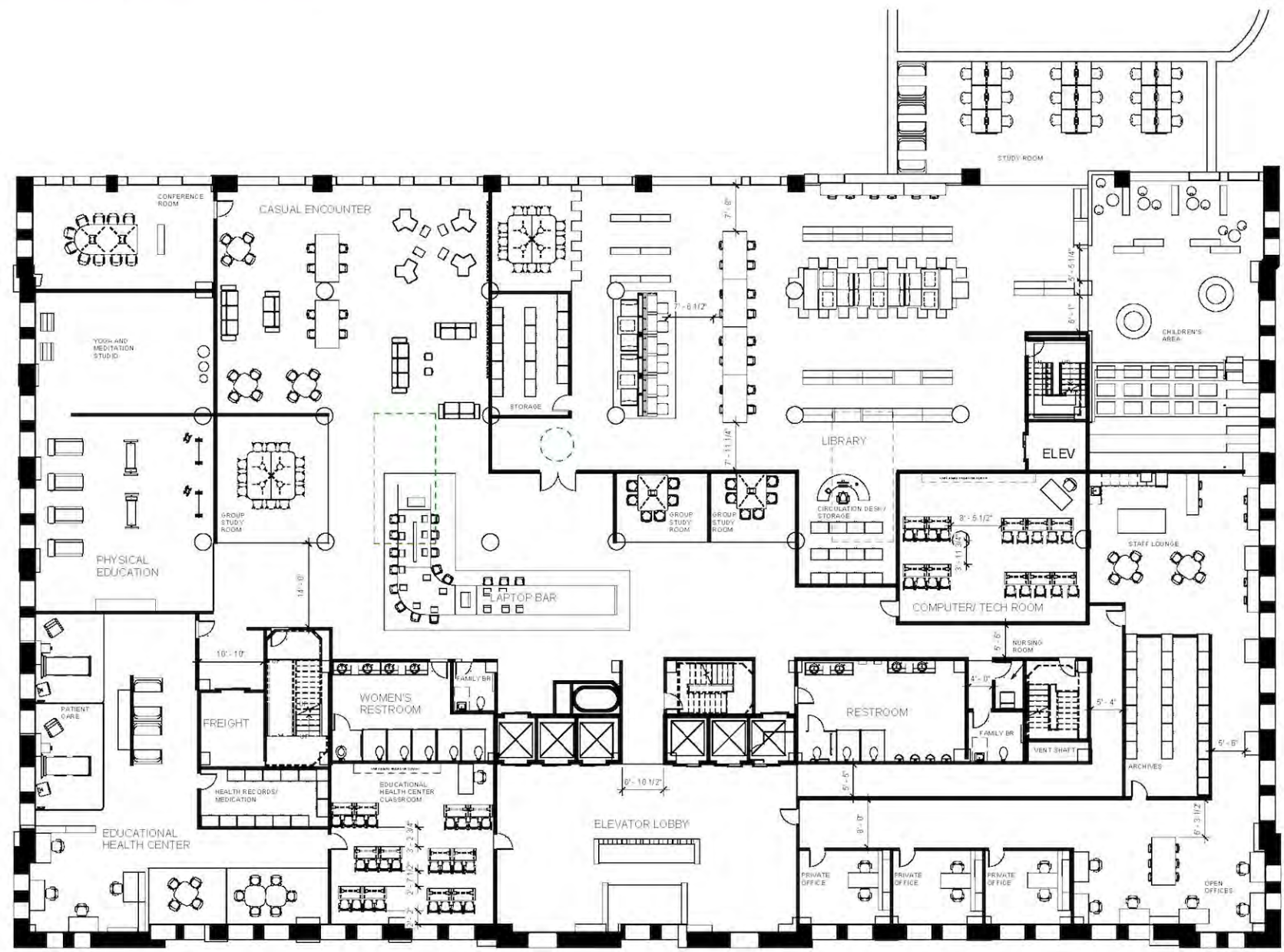
# Children's Classroom



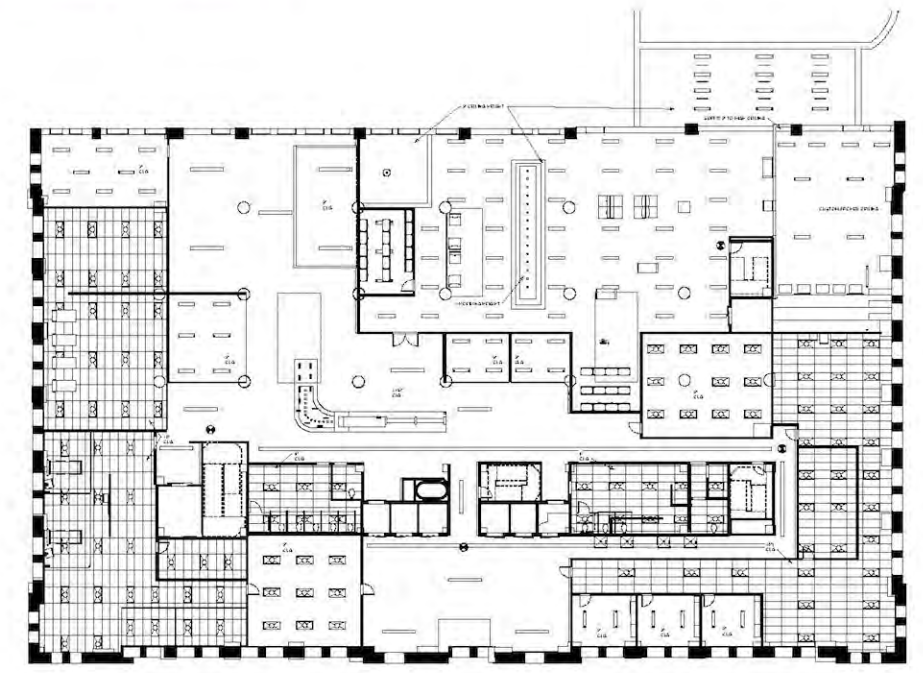


# Floor 3: Communal Center

The Third Floor is a public zone that begins to turn into a private zone for the residents on the floors above. The educational health center acts as the medical facility for residents and an educational opportunity for those wishing to learn about the medical field while the offices on this floor are strictly for the support of residents.



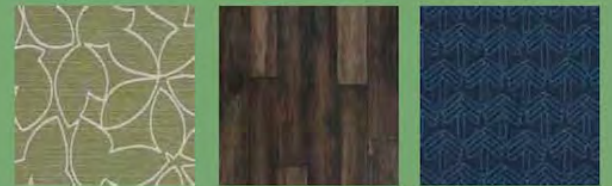
Existing Conditions



Reflected Ceiling Plan



# Laptop Bar





# Ascension Office Space



The third floor is the transition floor from public areas to the private residences. The offices on this floor are entirely dedicated to the four floors above and the residents that are going through the Ascension program. These offices are the next step after intake on the first floor, they are where all the resident's files are securely kept, and it is where the residents will go for meetings with their counselors, case workers, and any other staff available to support and encourage the journey they have embarked on from homelessness.



# Library





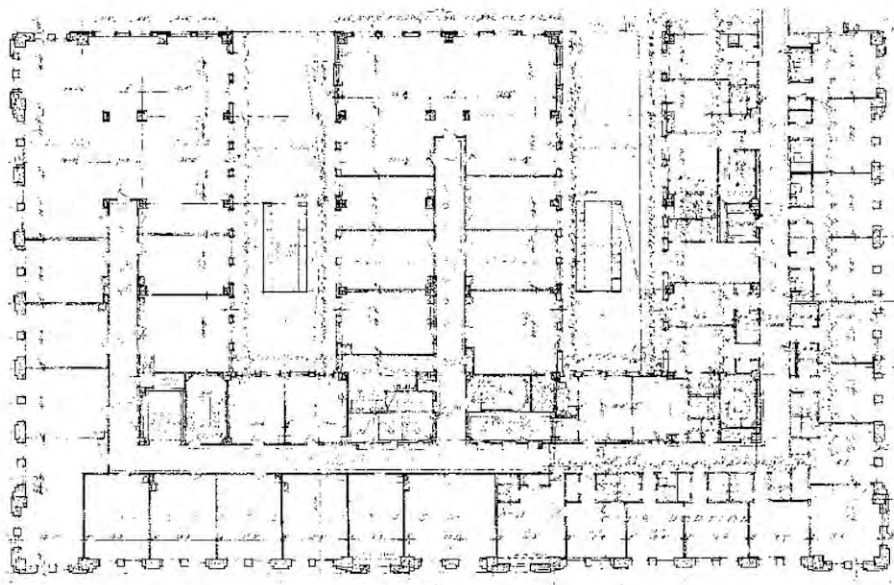
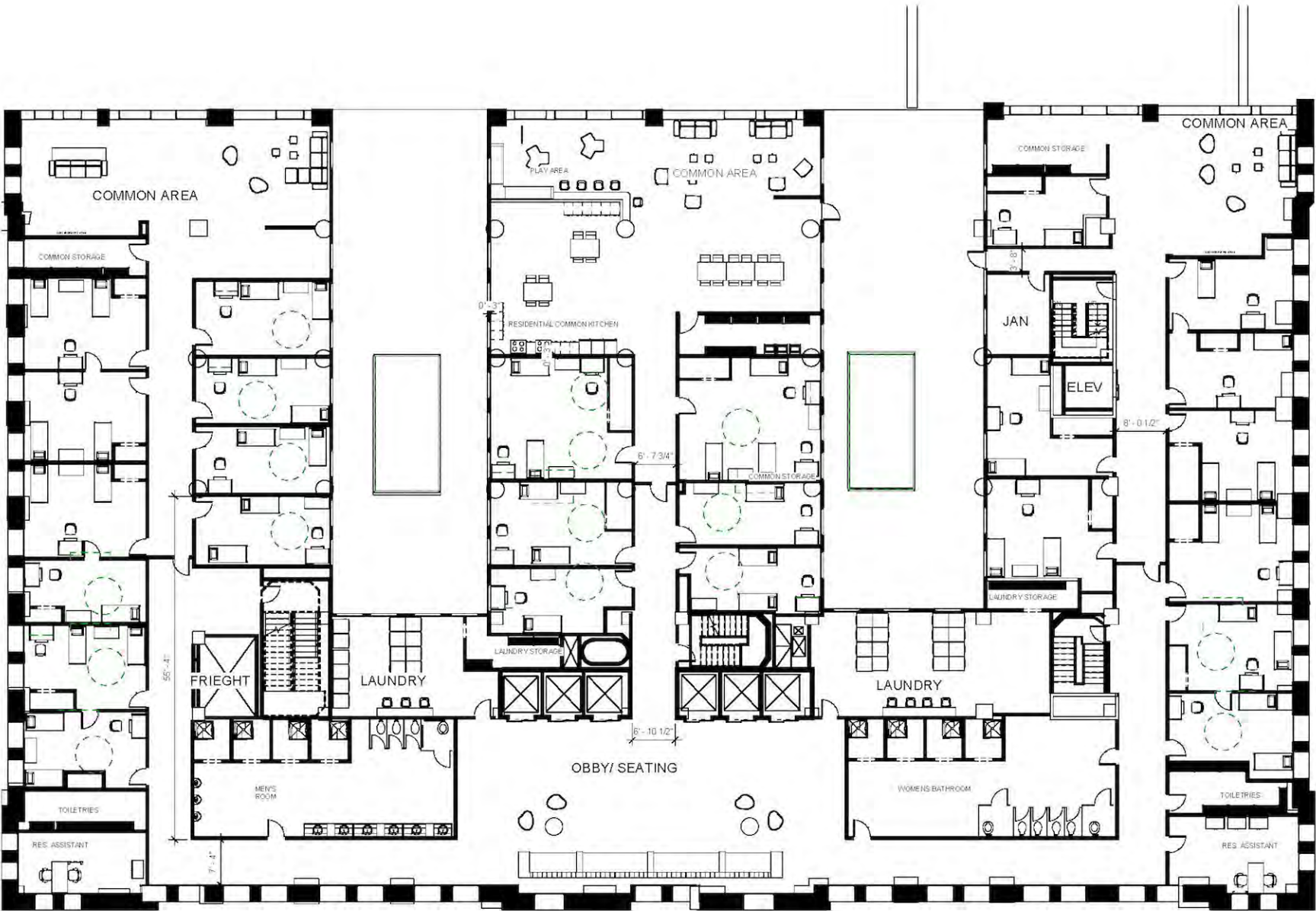
# Children's Library Section



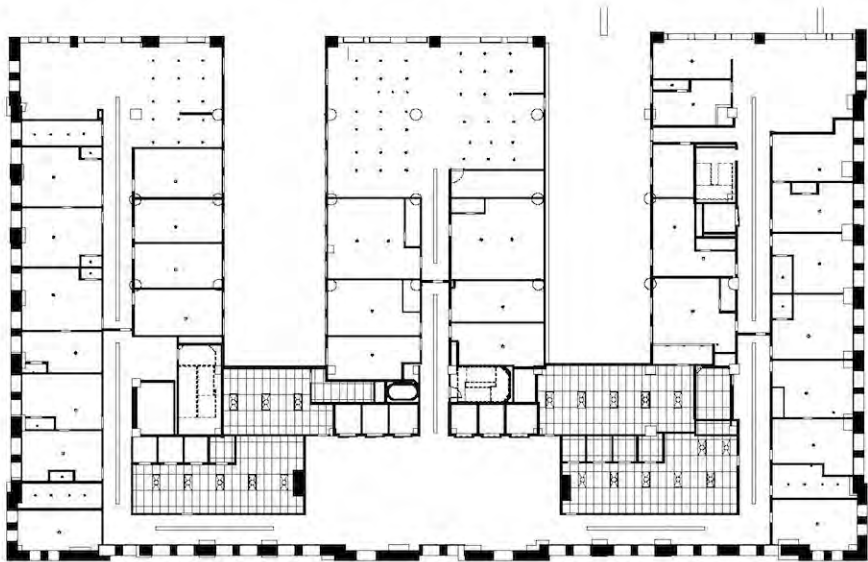


# Floor 4: Residential "Dorm" Style

The Fourth Floor will begin the ascension process with dormitory style residences, consisting of one to three bed flexible units. The residents have communal bathrooms, laundry, kitchen, playrooms and recreational space.



Existing Conditions



Reflected Ceiling Plan



# Dorm Style Room





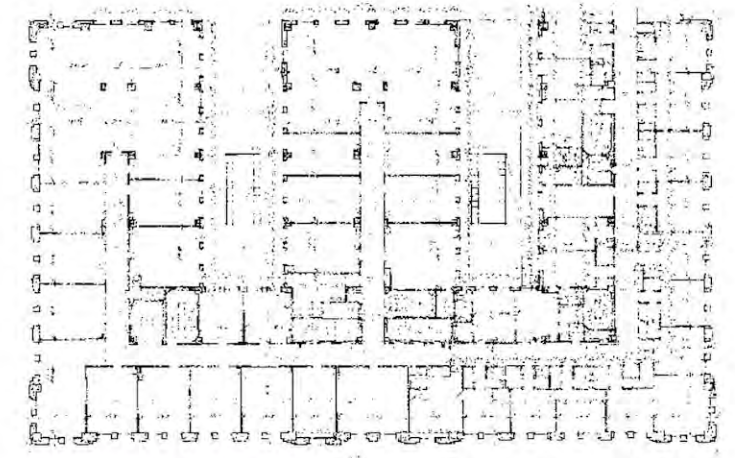
# Communal Kitchen and Lounge



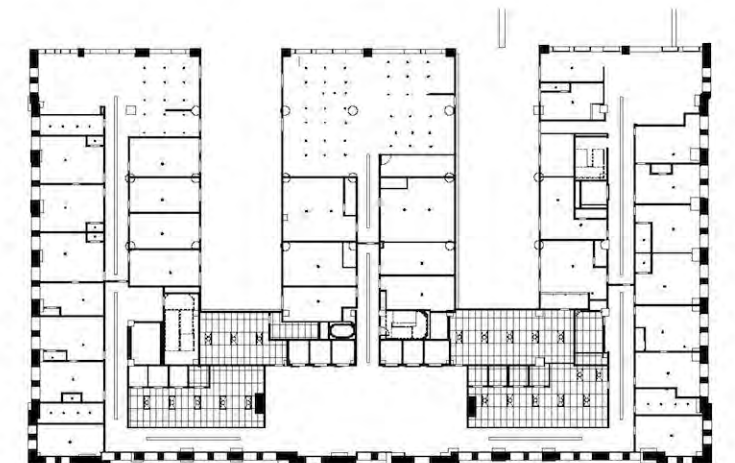


## Floor 5: Residential “Dorm” Style

The Fifth Floor carries on the dormitory style that house 1-2 people. The residents share a bathroom with the resident next to them and have extra storage accessible from the hallway. The residents also have access to a communal kitchen, playroom, and laundry room.



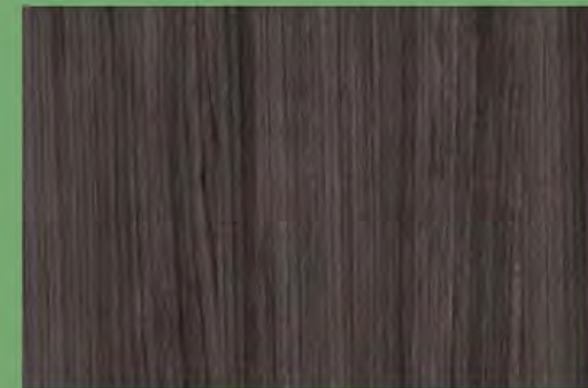
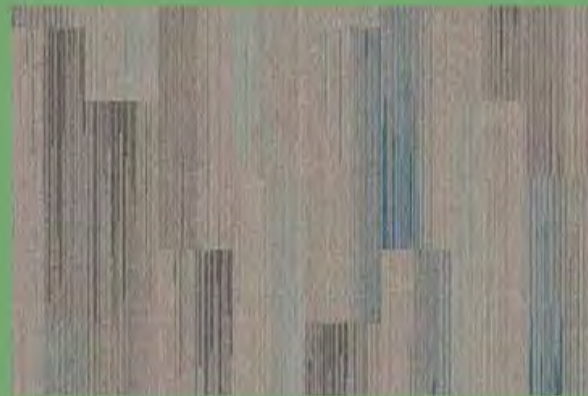
Existing Conditions



Reflected Ceiling Plan



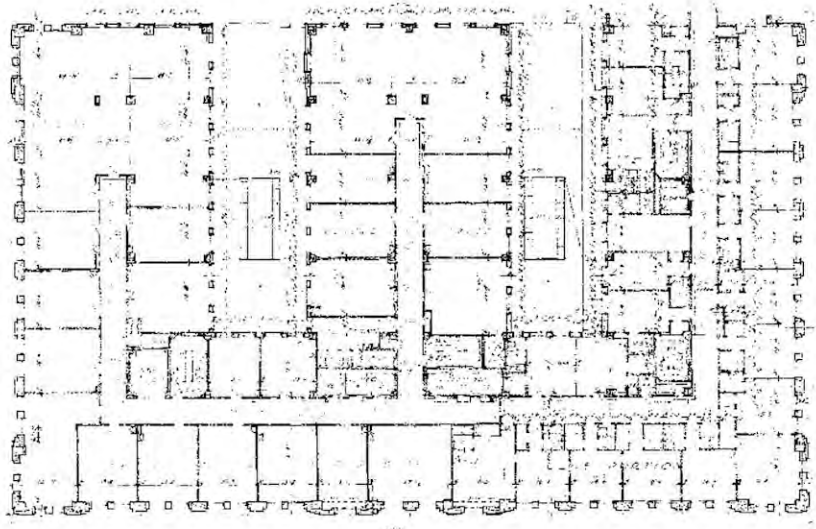
# Dorm Style Room



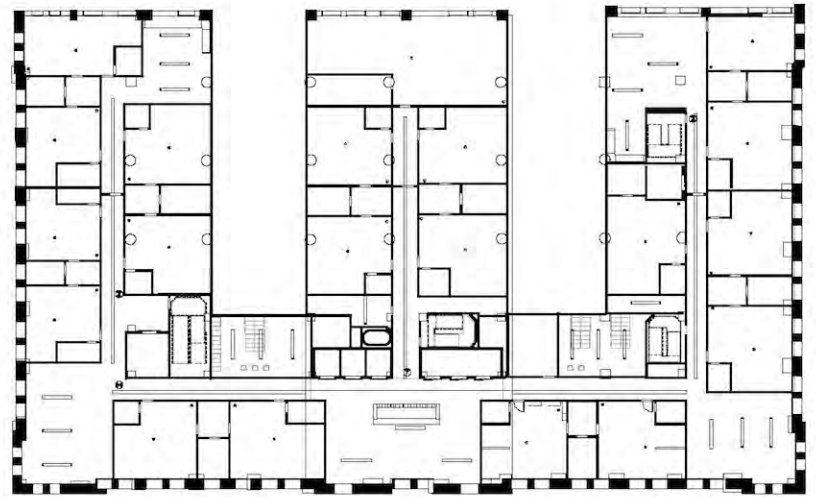


# Floor 6: Residential "Suite" Style

This floor is one where residents are almost completely independant. Each resident has their own unit that includes beds, a living space, a kitchenette, and a small storage area with an adjoined bathroom that connects no more than 2 units. The residents have their privacy within their units but still have communal laundry rooms, shared play areas, community lounges, and resident advisors on floor.



Existing Conditions



Reflected Ceiling Plan

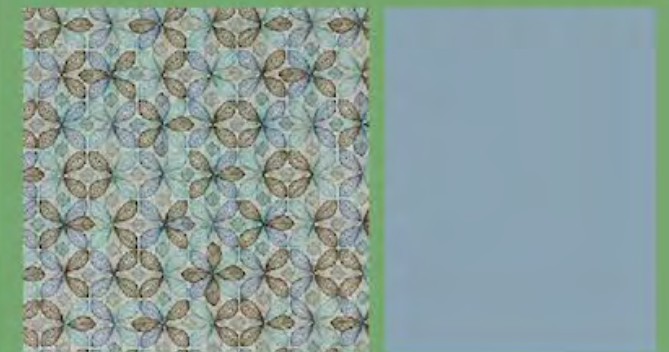


# Kitchenette and Living Space





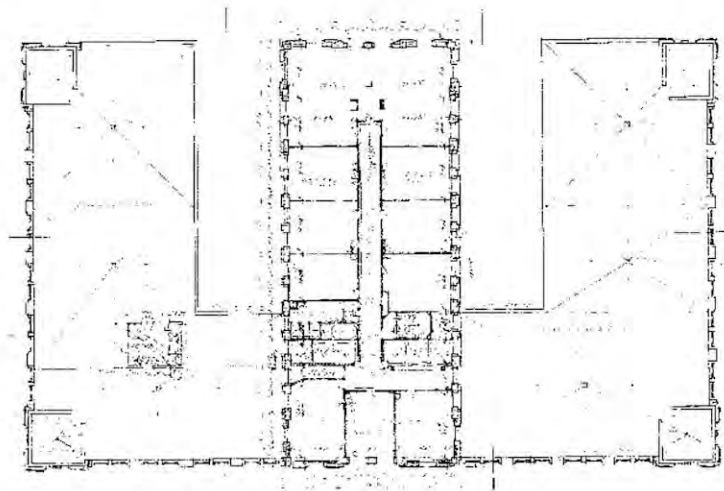
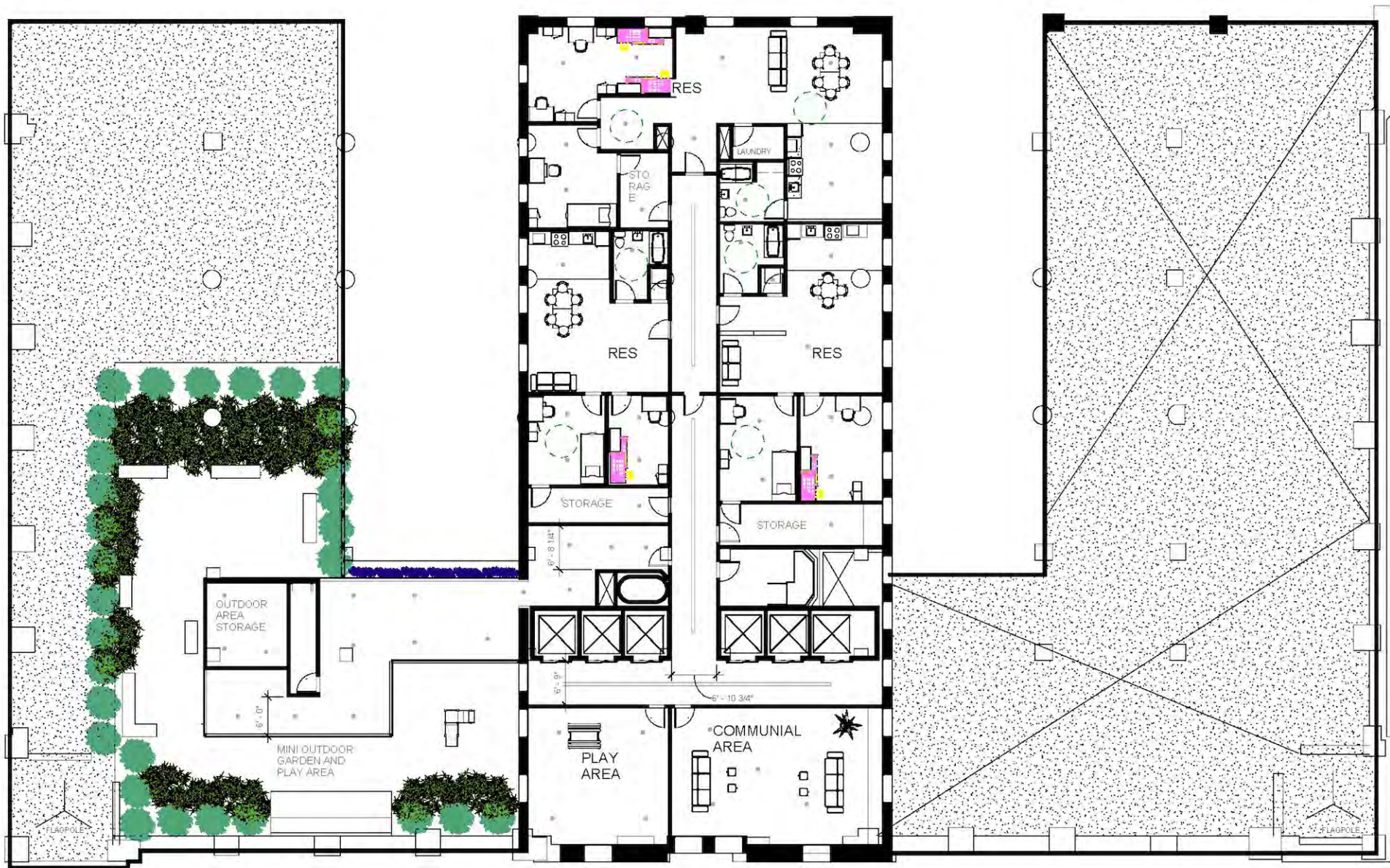
# Sleeping Area



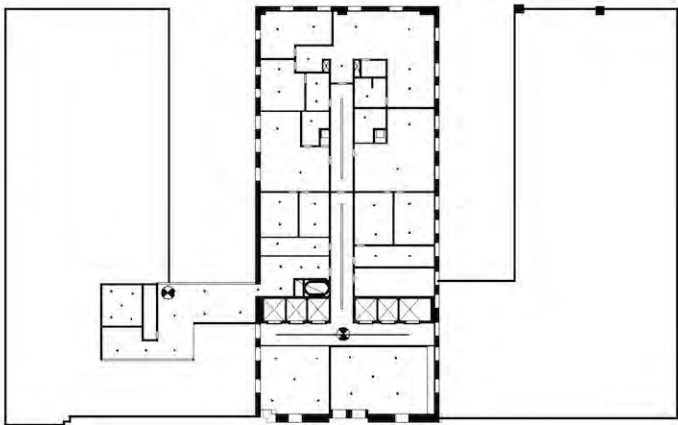


# Floor 7: Residential Apartments

In comparison to the other floors, the residents are completely dependant. Each resident will have a two bedroom, one bathroom, a living area, kitchen, laundry room, and a storage room. Even though the residents in these spaces have their own utilities and living areas, there is also a communal play area and community lounge as well as an outdoor garden with a Class 1 Fire Rated Exotic IPE wood decking and play set.



Existing Conditions



Reflected Ceiling Plan

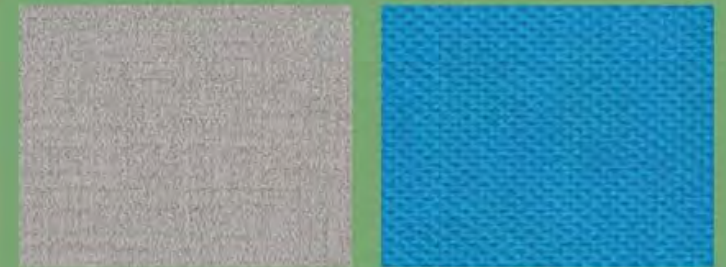


# Apartment

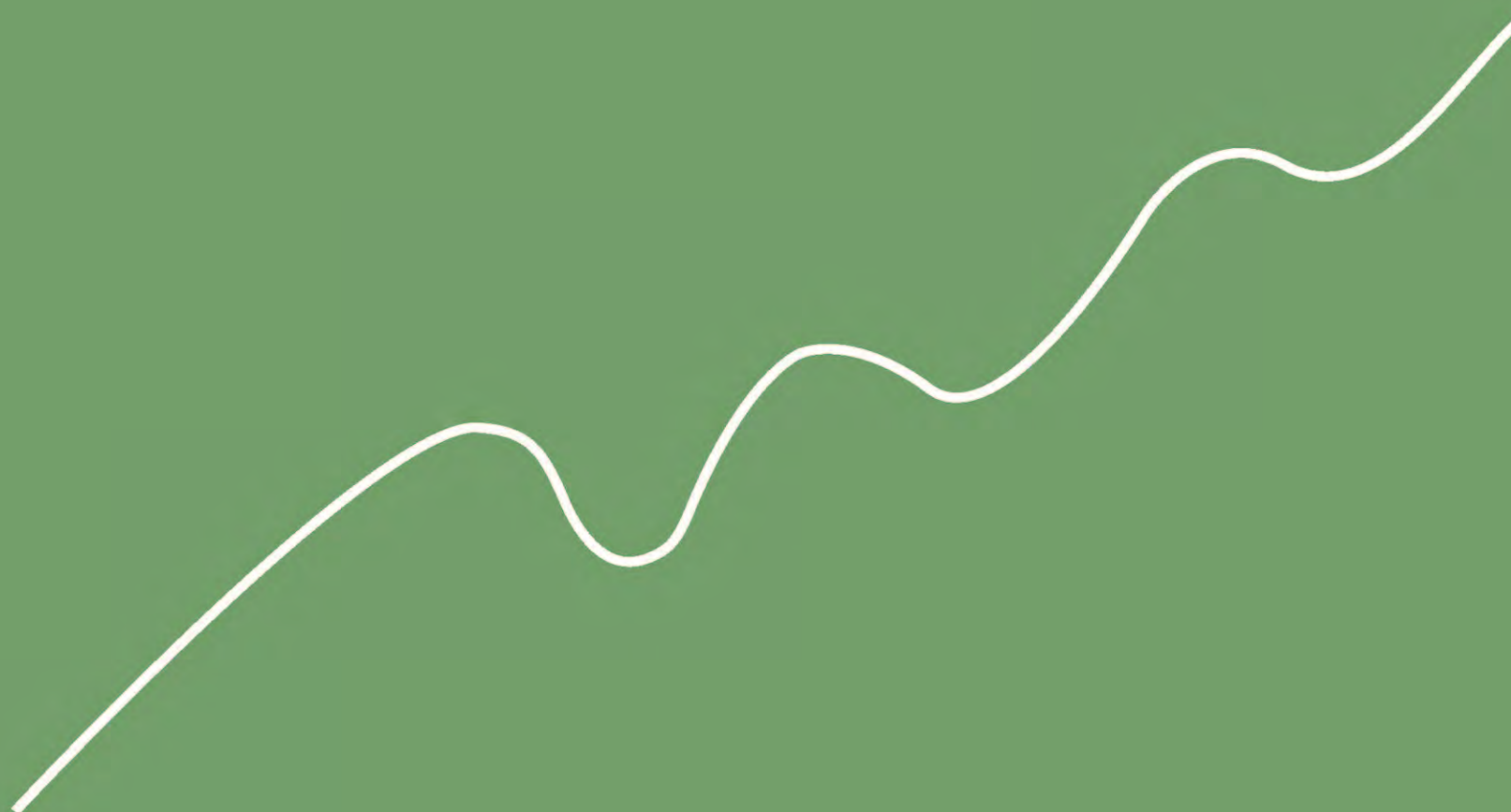




# Bedroom







thank you!