



Alexa Boyd, Amber Hrabko & Siobhain Page
INDE 401
Fall 2017



Agenda

Concept	3
Users	4
Universal and Deaf Space.....	5
Adjacencies	6
First Floor.....	7
Mezzanine	13
Second Floor.....	16
Third Floor.....	22
Fourth - Sixth Floors	27
Seventh Floor.....	35





What is our concept?

The succulent plant is independent. Known for their tough exterior leaves which retain water, and their unique, waxy surface, the succulent plant doesn't just choose to live in the most unfavorable of climates, it thrives. Some of these plants can even store nutrients and water in their roots to feed themselves in a serious drought. Neglect or overprotection can stunt growth. This concept will act as an inspiration for individuals to develop independently within the new Hoya House facilities.

The Mission of the Hoya House is to put an end to homelessness within the current community of Detroit, Michigan. The development of an urban multi-story shelter located in the Free Press Building at 321 W. Lafayette Blvd will create a safe and nurturing oasis that encourages inhabitants to turn over a new leaf. Much like the succulent, the proposed center will teach skills that can be absorbed and stored away for later use. The environment will be inviting and homelike with architectural elements such as large open spaces that encourage natural light, and curved accents allowing a greater sense of togetherness. Biophilia will play an important role in the design because of the primal comfort that natural elements inspire in people, giving them the confidence to persevere.





Who are the end
users?





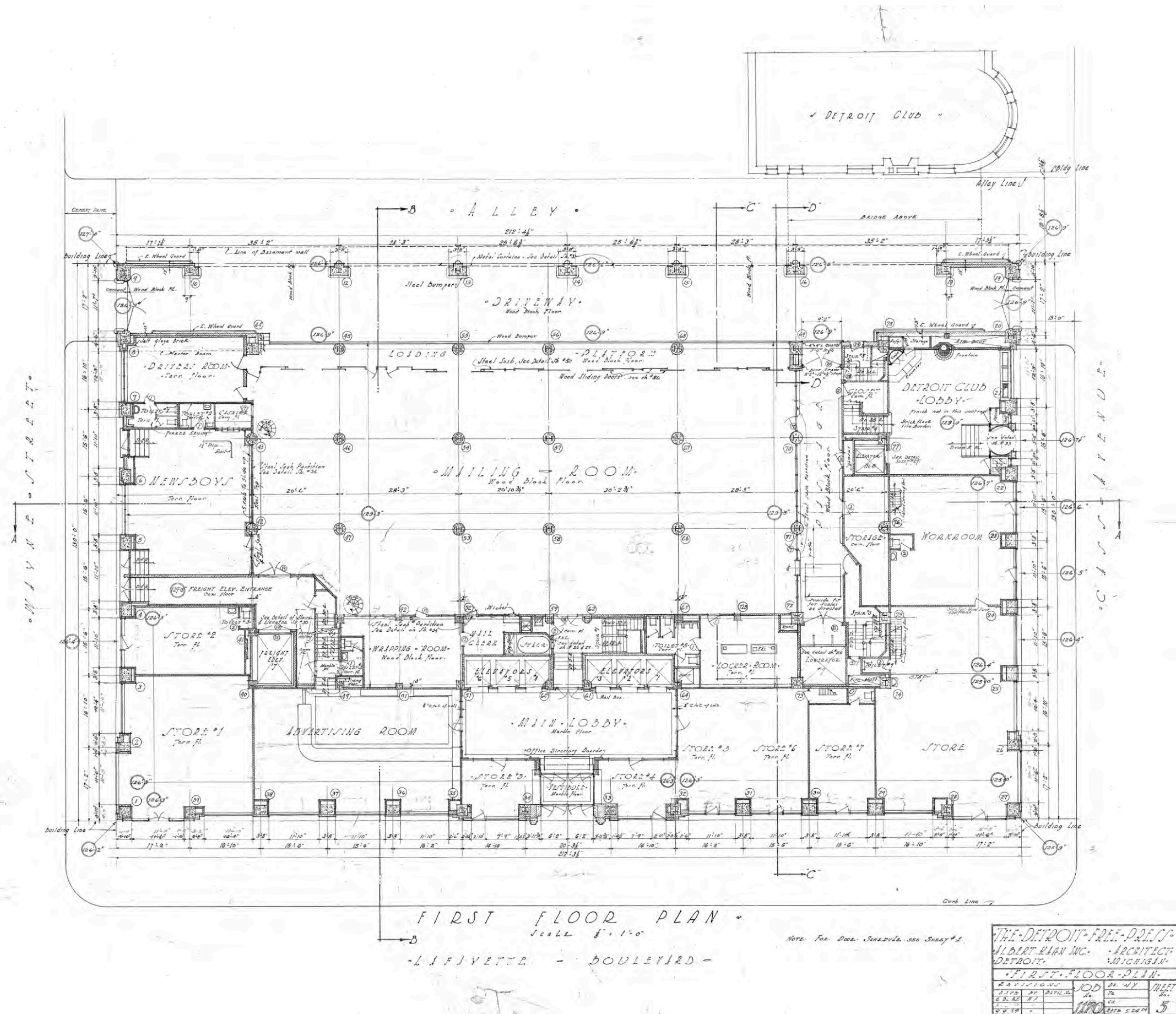
Designing an inclusive environment

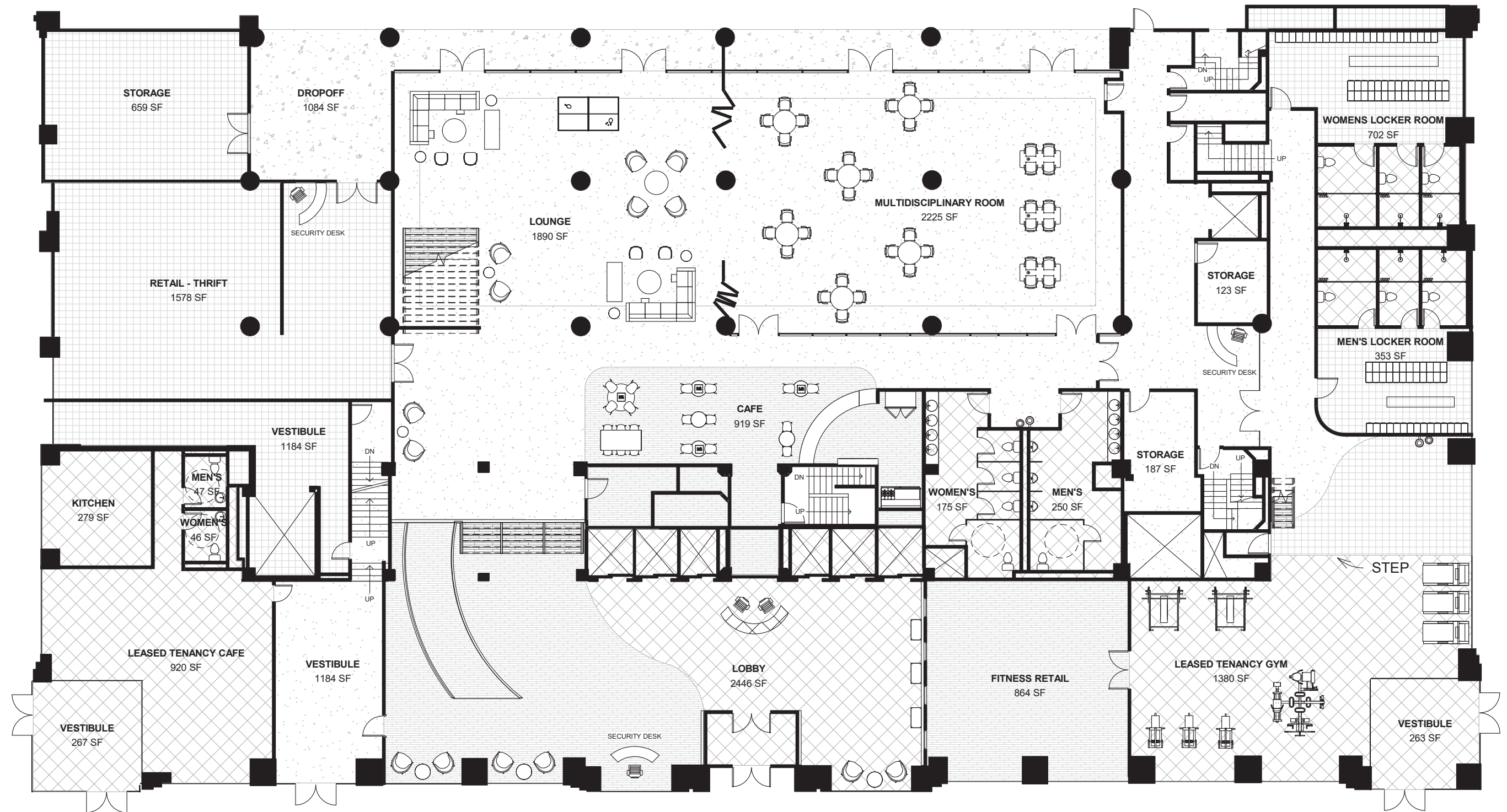
- Equitable Space
- Flexibility
- Simple and Intuitive Use
- Perceptible Information
- Minimize Error and Hazards
- Low Physical Effort
- Size and Space for Approach and Use

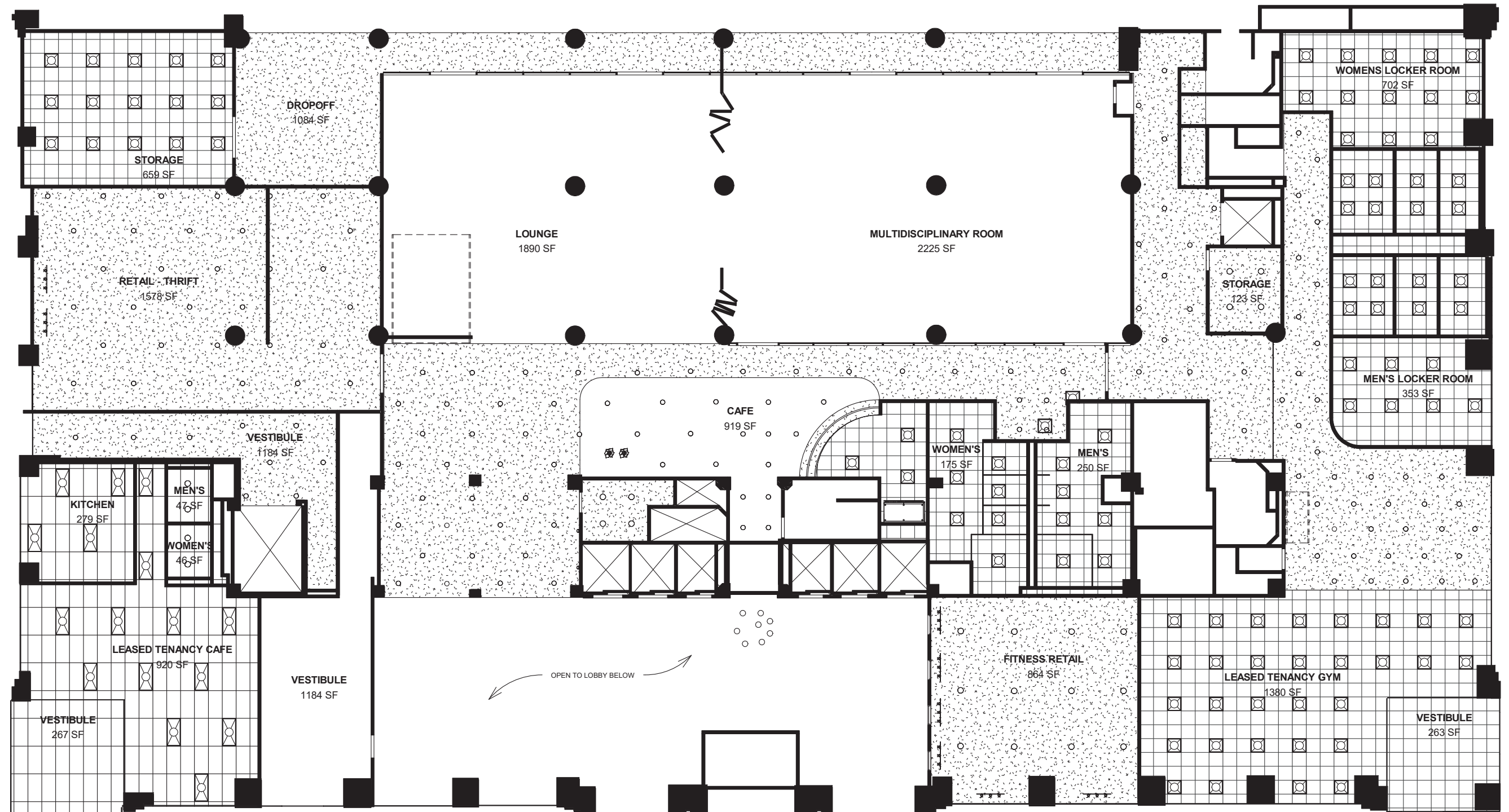
UNIVERSAL DESIGN

- Acoustics
- Sensory Reach
- Space and Proximity
- Mobility and Proximity
- Light and Color

DEAF SPACE





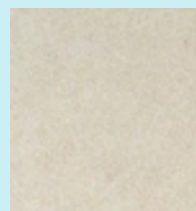




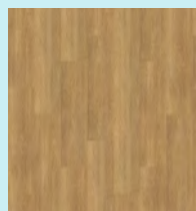
MATERIALS



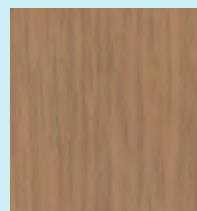
FABRIC



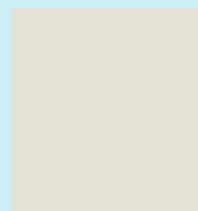
FLOORING



FLOORING



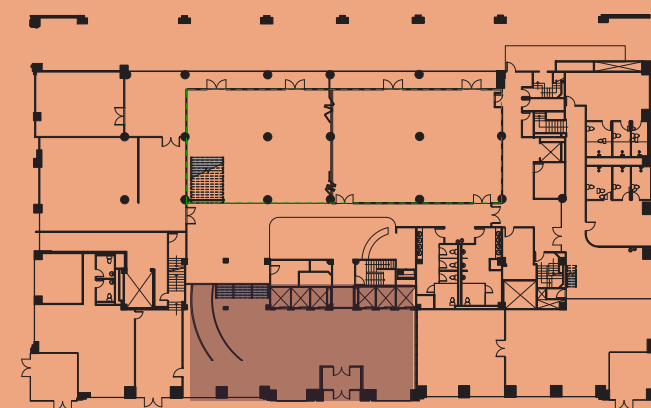
LAMINATE



PAINT

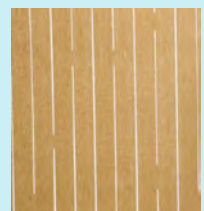


PAINT

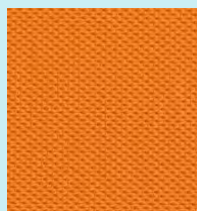




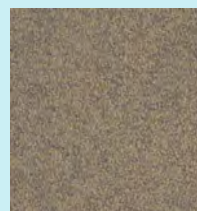
MATERIALS



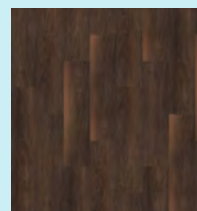
PANELING



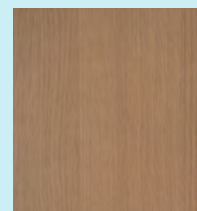
FABRIC



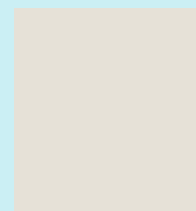
FLOORING



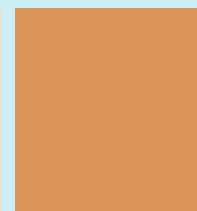
FLOORING



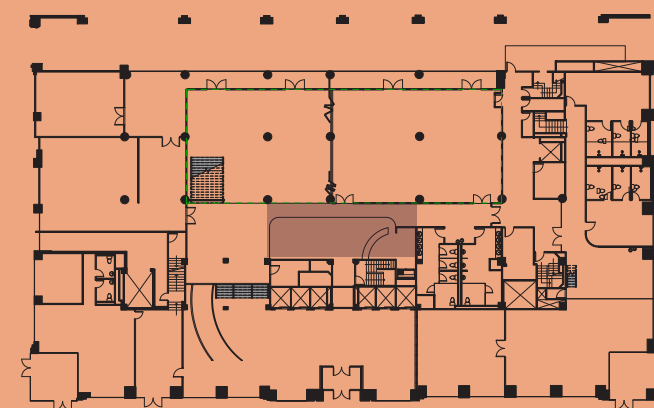
LAMINATE



PAINT



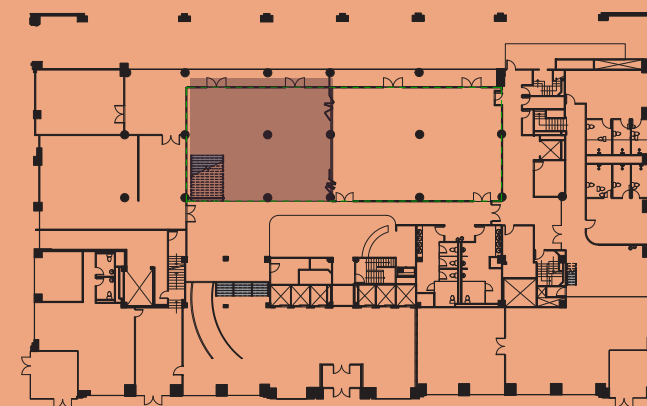
PAINT

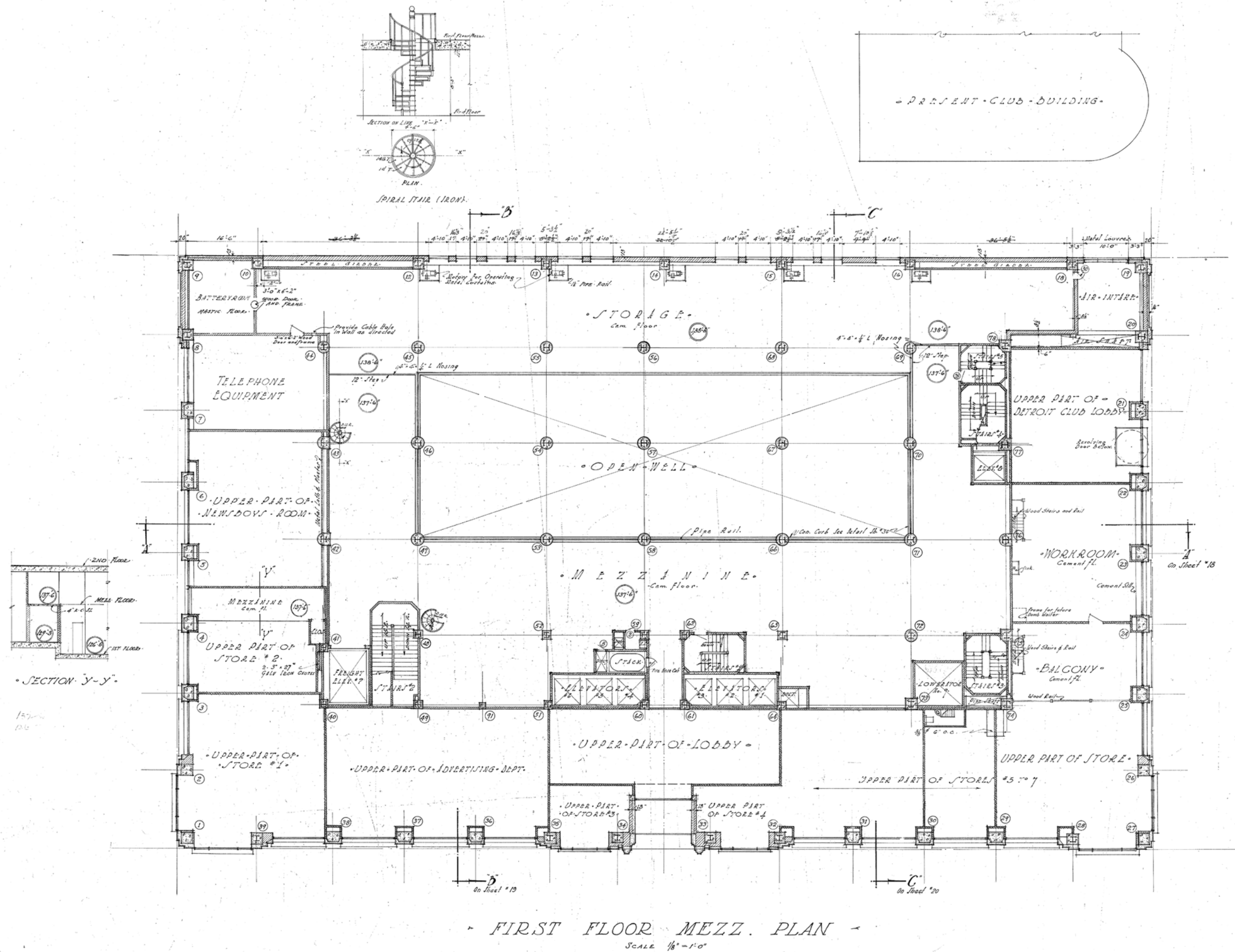


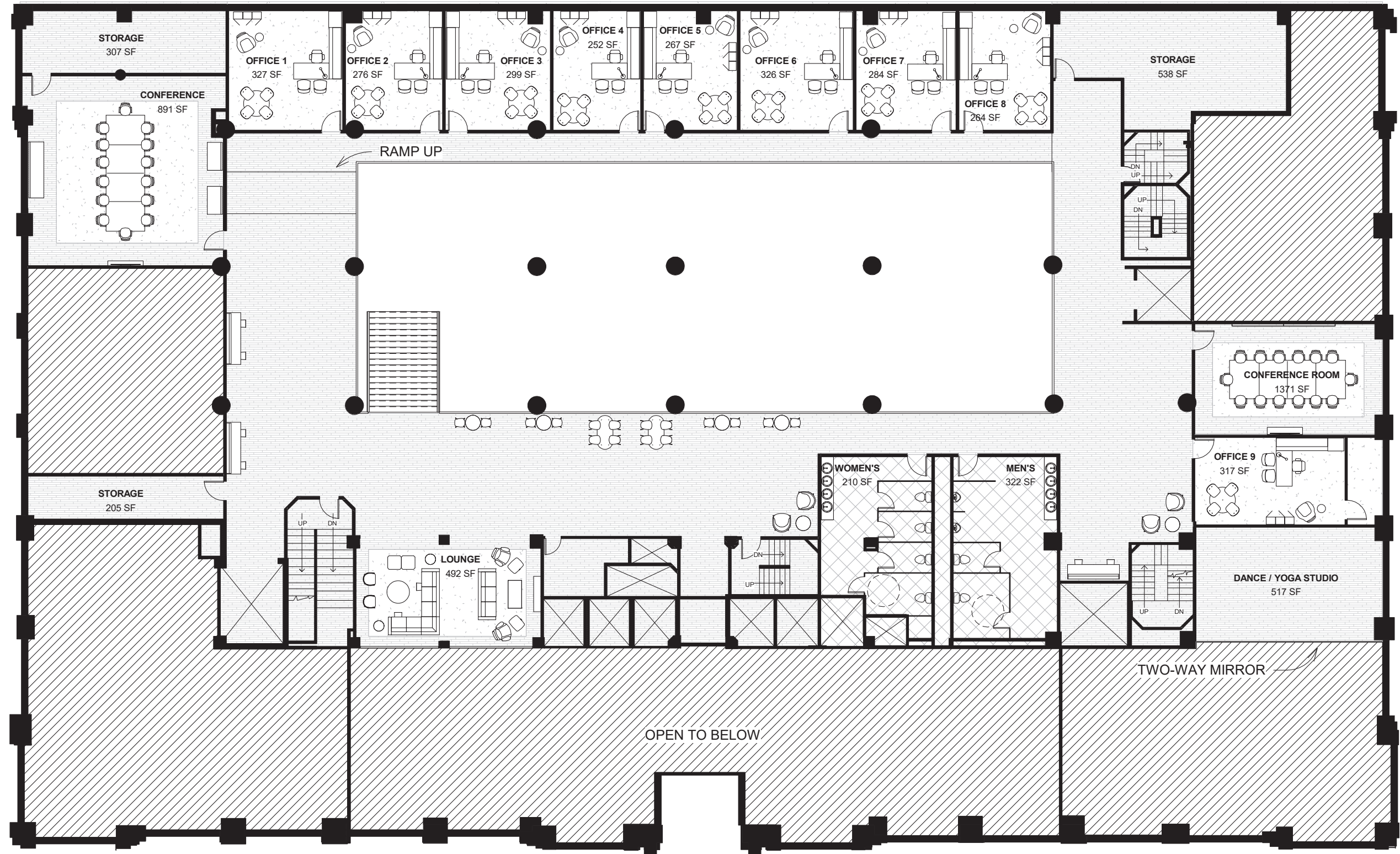


MATERIALS

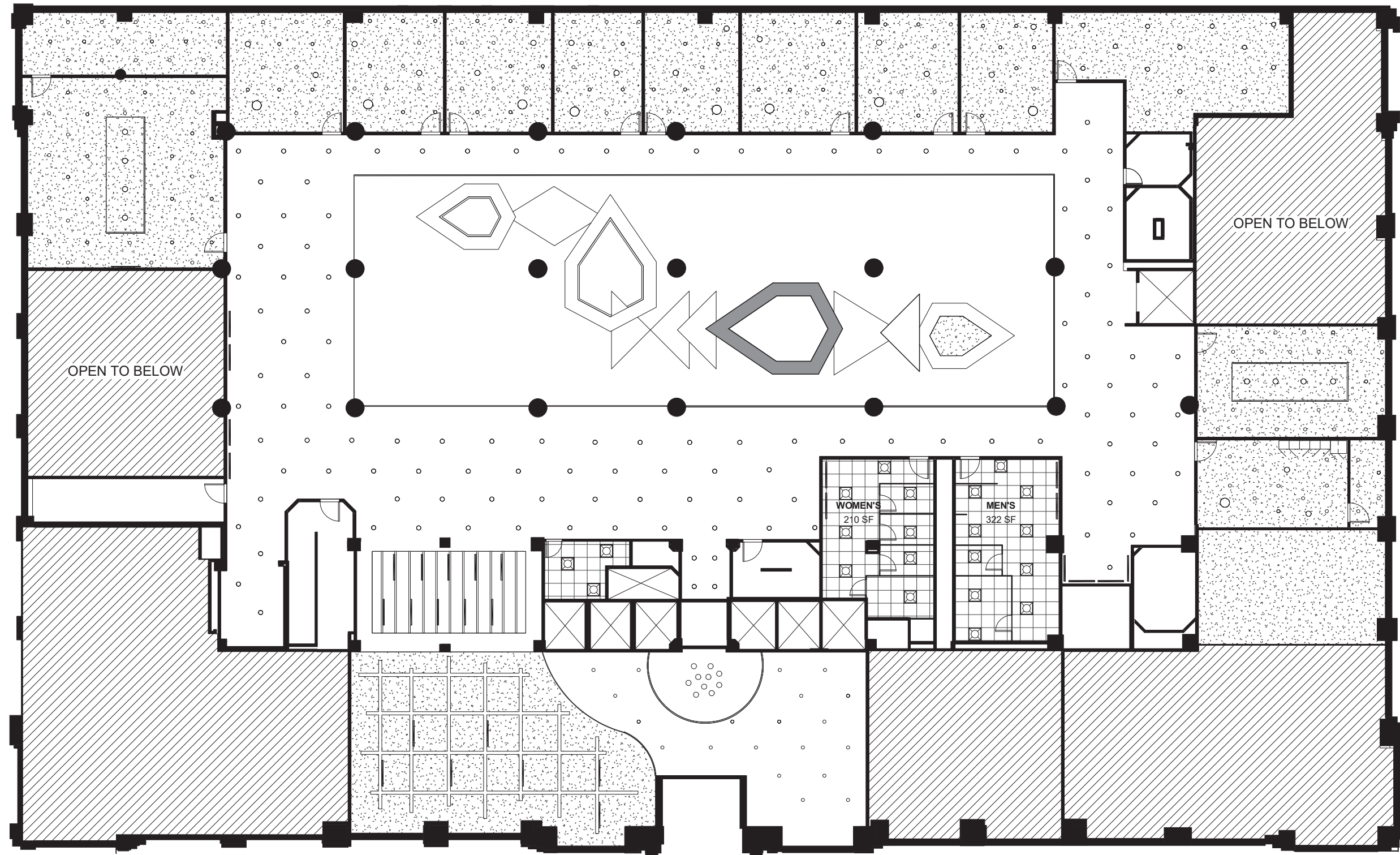
					
FABRIC	FABRIC	FABRIC	FABRIC	PAINT	PAINT
					
LAMINATE	FLOORING	FLOORING	FELT PANEL	PAINT	PAINT

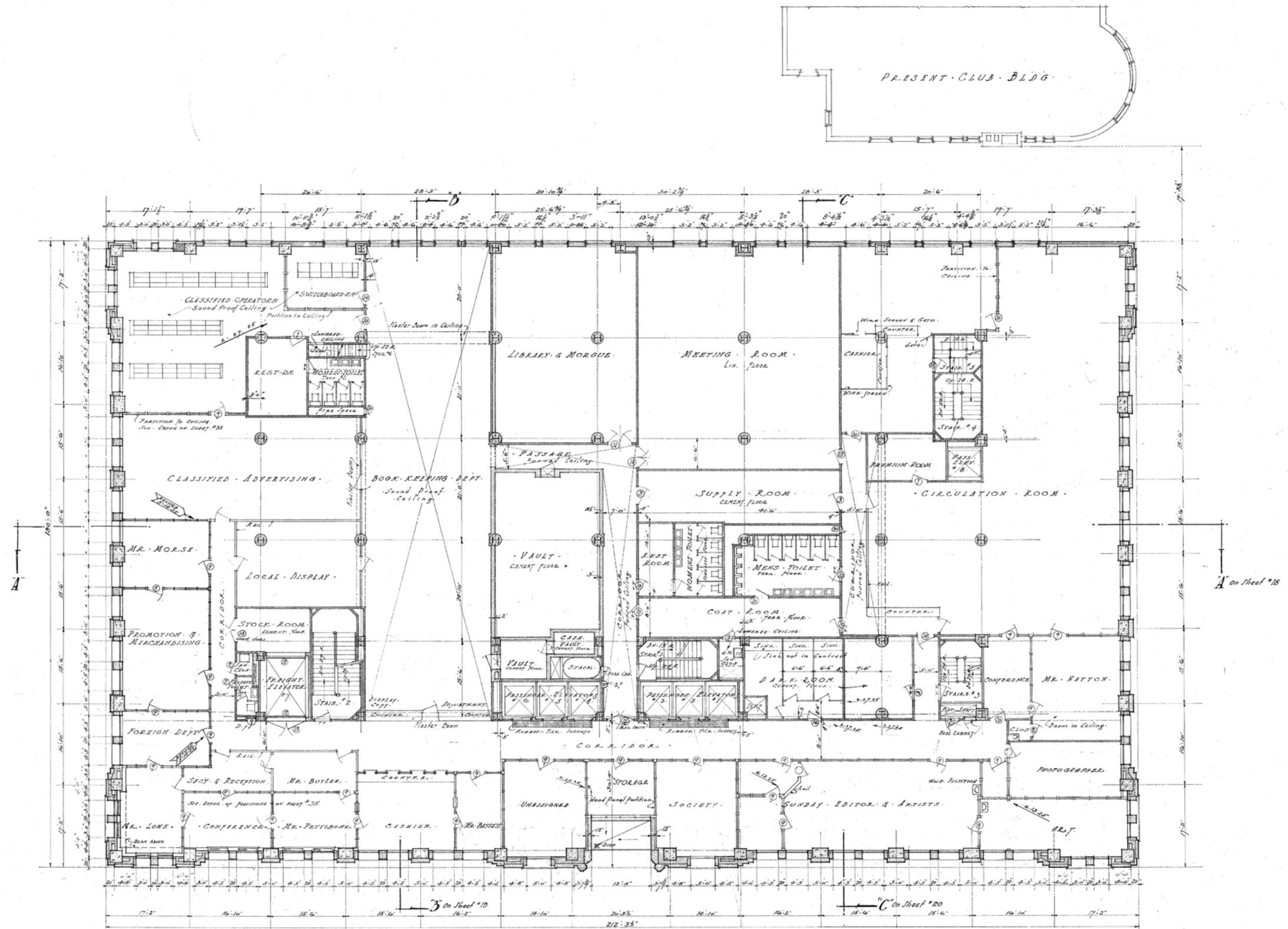






① MEZZ Level FURNITURE

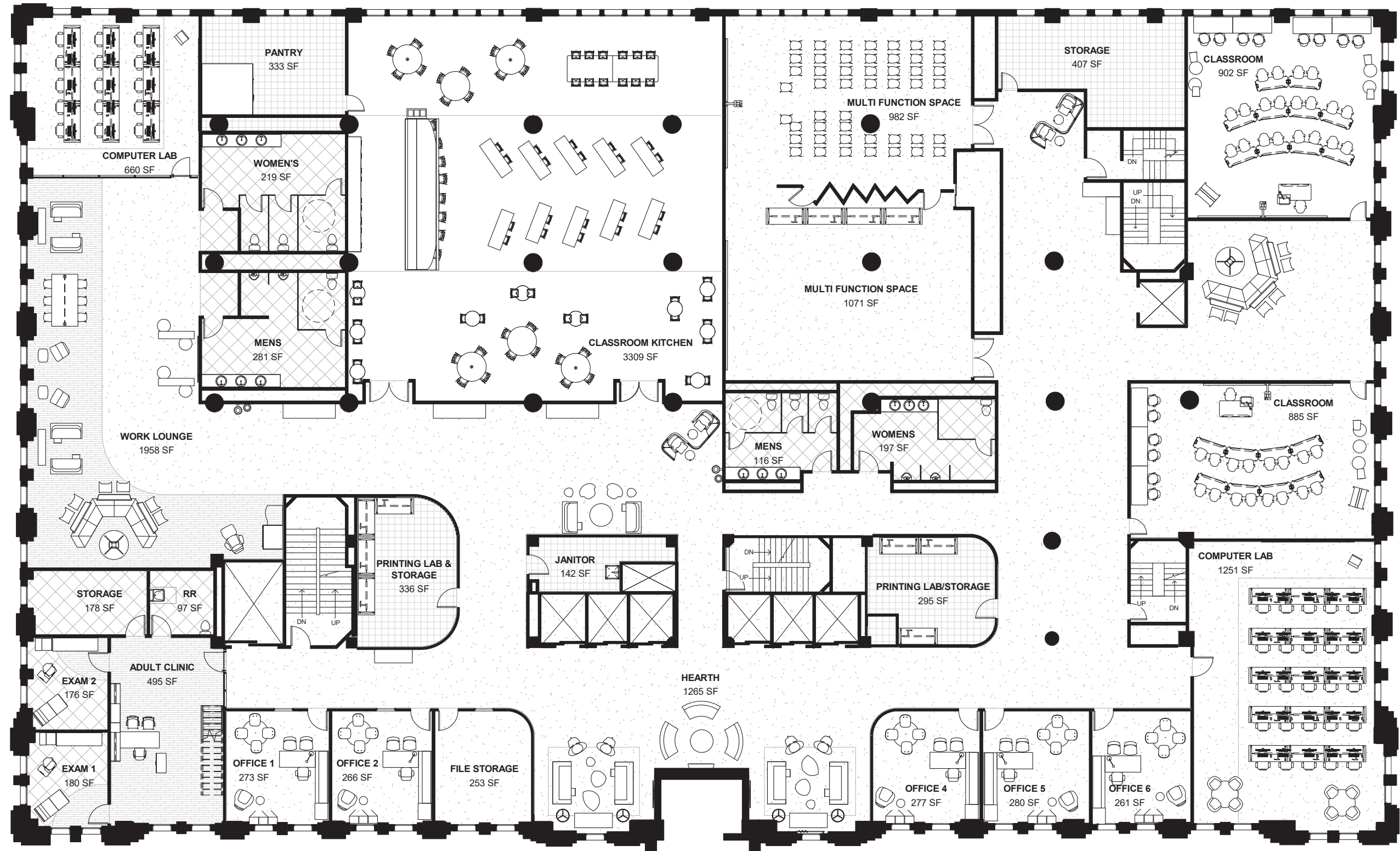


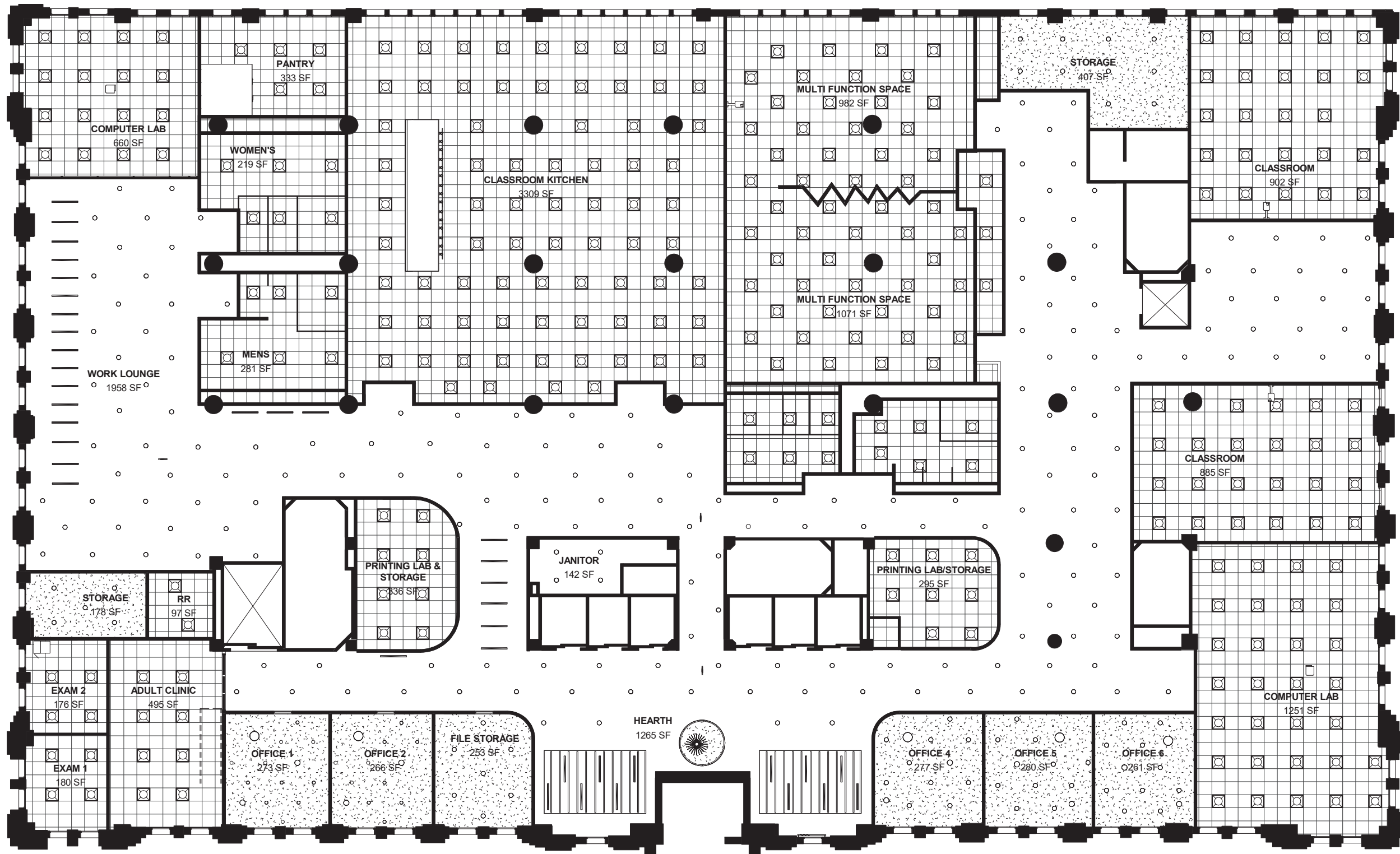


SECOND FLOOR PLAN.
SCALE: 1/8" = 1'-0".

NOTE: ALL GLASS PARTITIONS, UNLESS OTHERWISE MARKED TO BE 7'-0" HIGH. FLOORS UNLESS OTHERWISE MARKED TO BE LITOLIUM.

THE DETROIT FREE PRESS			
ALBERT KAHN, INC.		ARCHITECT	
DETROIT		MICHIGAN	
SECOND FLOOR PLAN			
REVISIONS		JOB	12.
DATE	BY	NO.	12.
6-30-24	H.A.		17



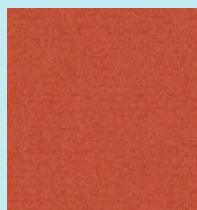




MATERIALS



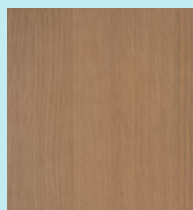
FABRIC



FLOORING



FLOORING



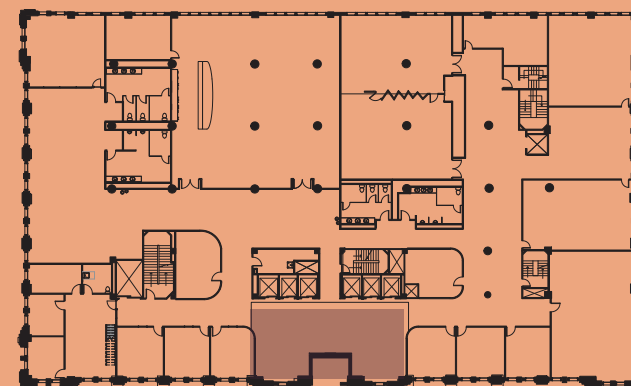
LAMINATE



PAINT



PAINT

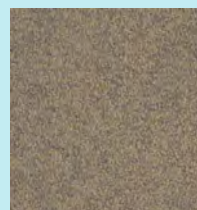




MATERIALS



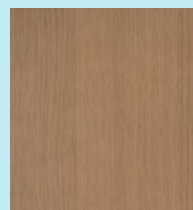
FABRIC



FLOORING



FLOORING



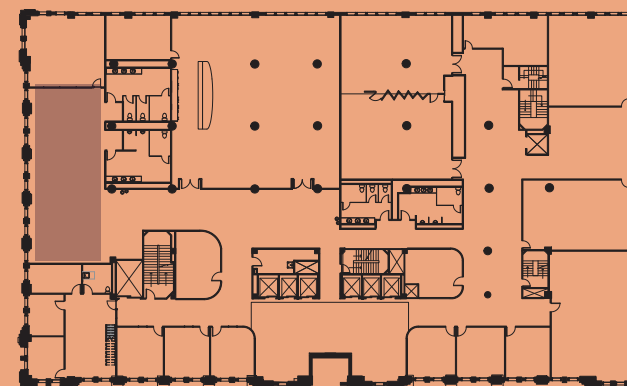
LAMINATE



PAINT



PAINT

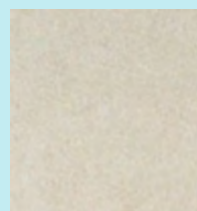




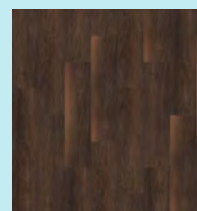
MATERIALS



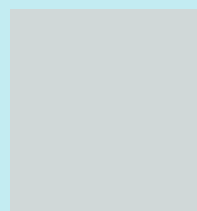
COUNTER



FLOORING



FLOORING



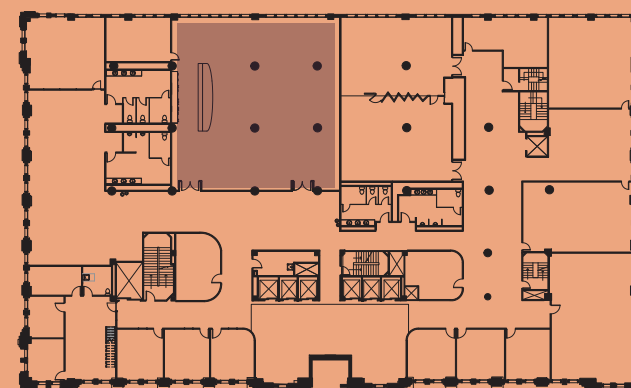
PAINT

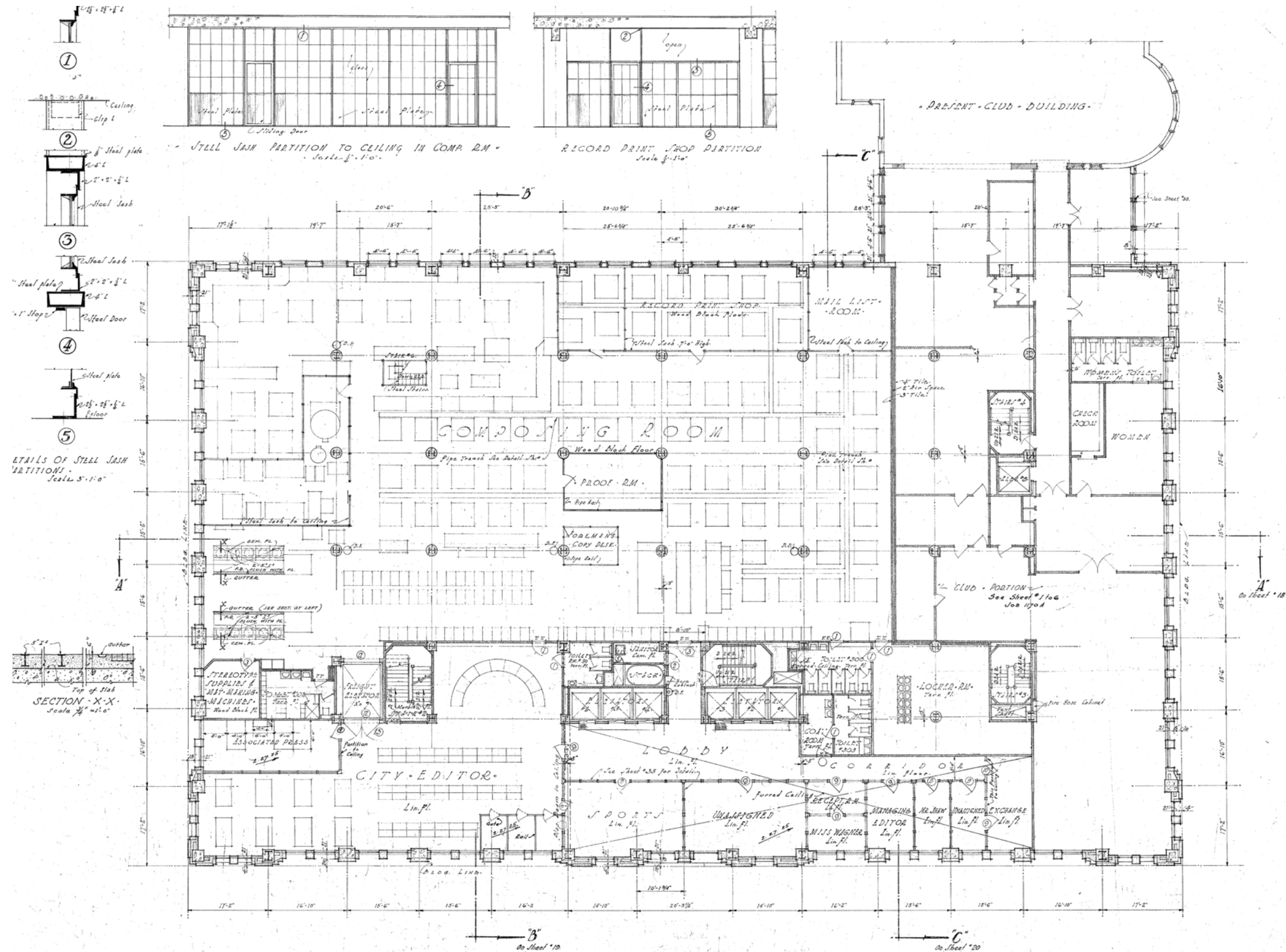


PAINT



PAINT

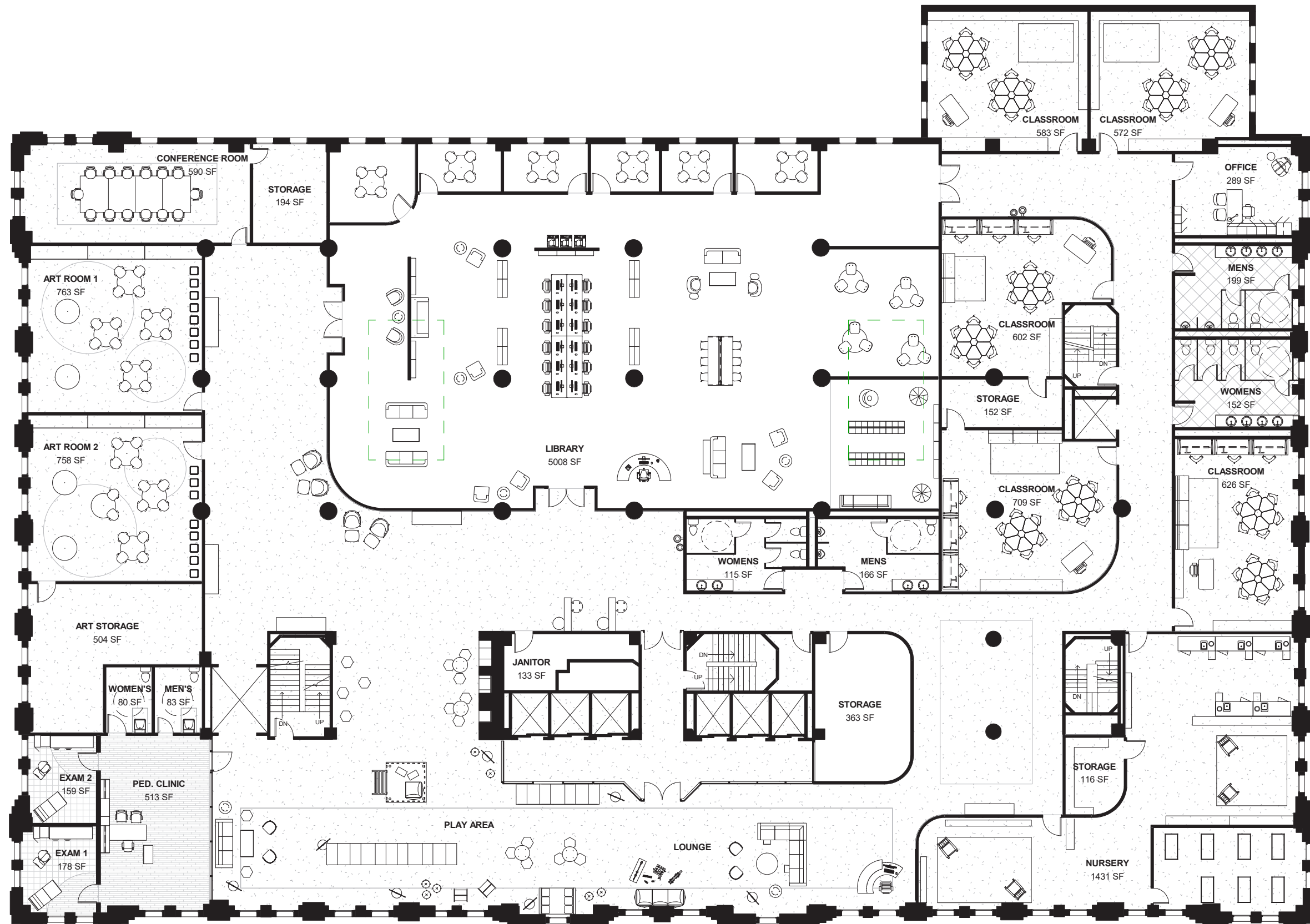


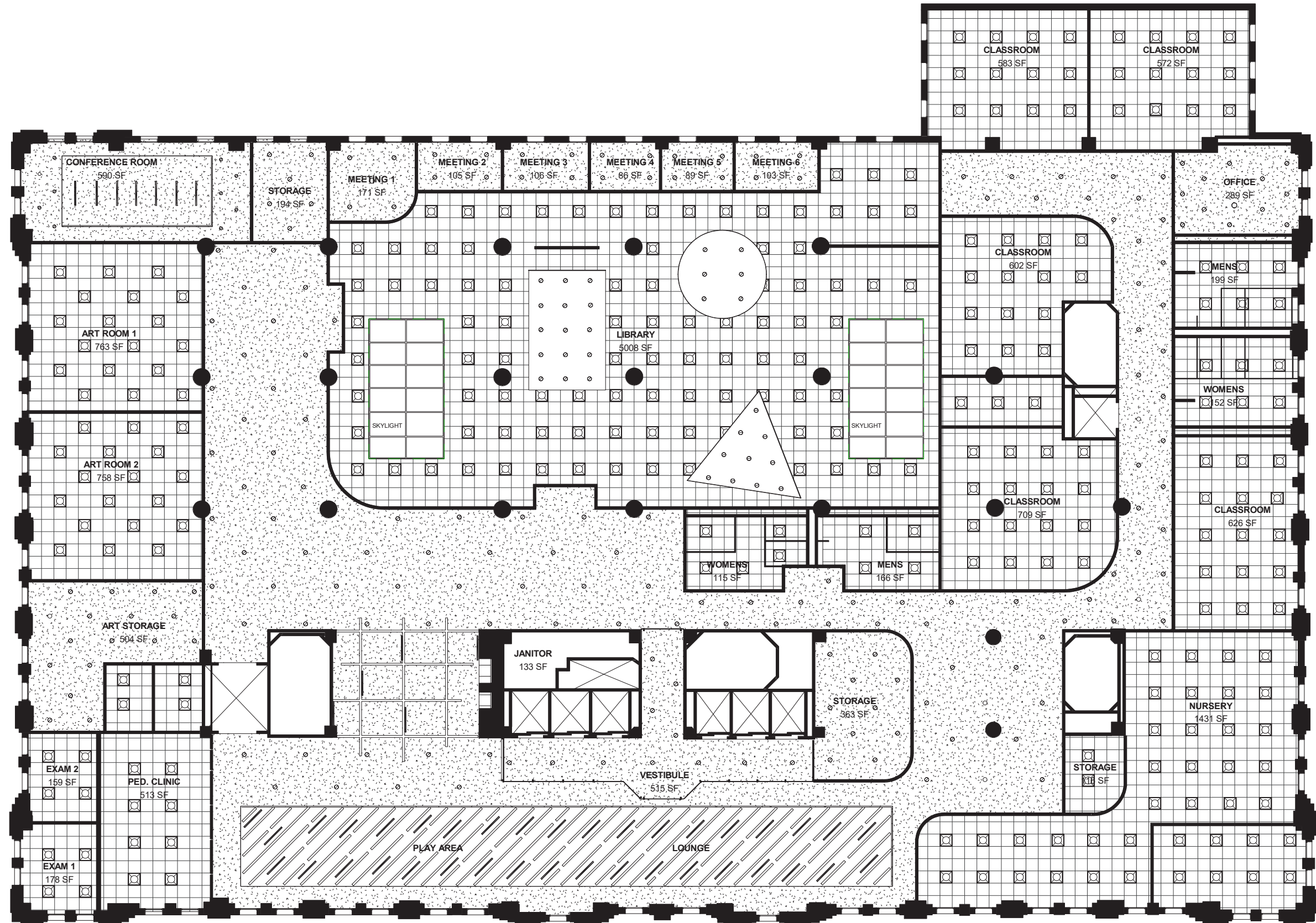


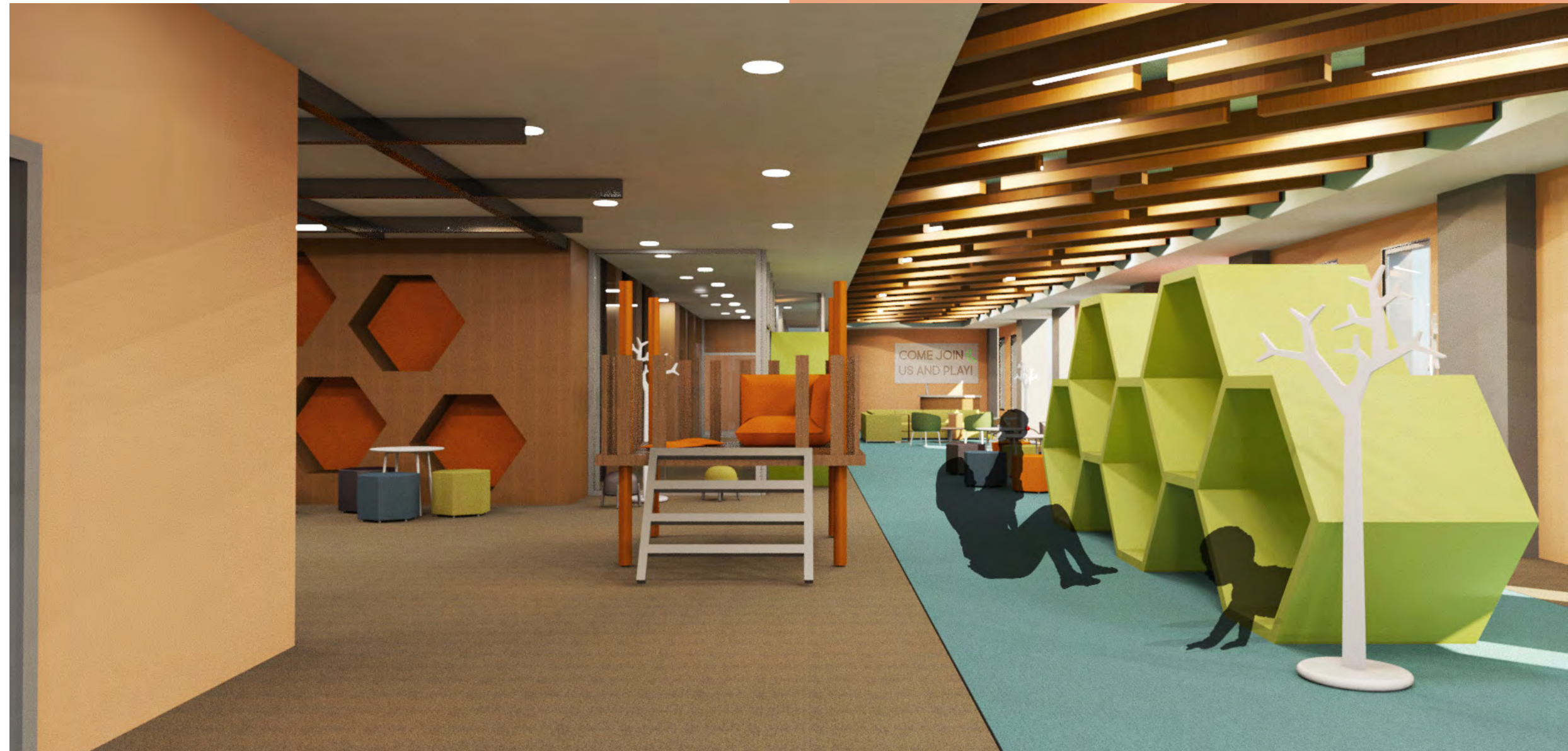
THIRD FLOOR PLAN
Scale 1/8" = 1'-0"

NOTE: All tile partitions unless otherwise noted are to be 4" thick.

THE DETROIT FREE PRESS			
ALBERT R. HAN, INC. ARCHT.			
DETROIT, MICH.			
THIRD FLOOR PLAN			
REVISIONS	DATE	BY	DATE
1	10-1-18	ALB. R. HAN	







MATERIALS



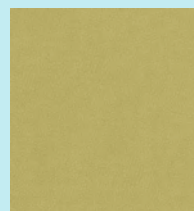
FABRIC



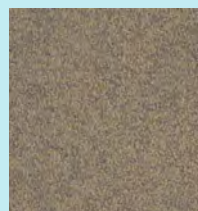
FABRIC



FABRIC



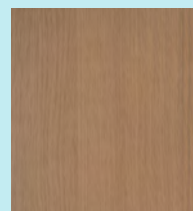
FABRIC



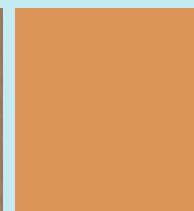
FLOORING



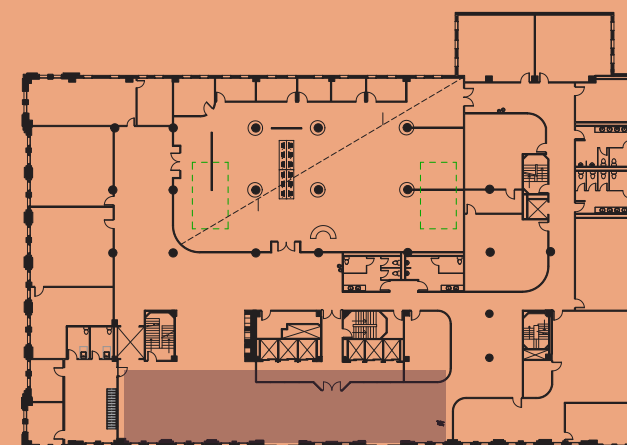
FLOORING



LAMINATE

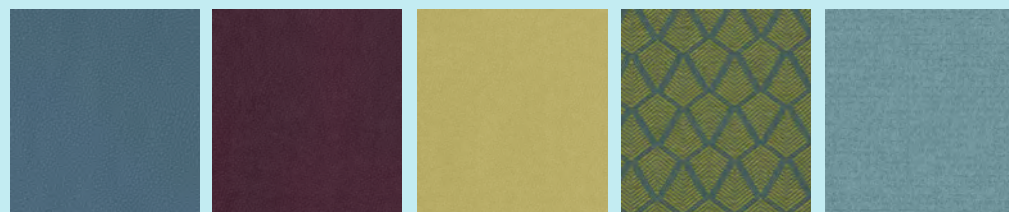


PAINT





MATERIALS



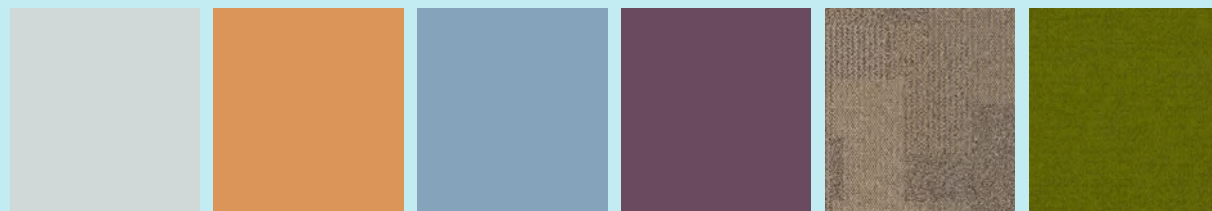
FABRIC

FABRIC

FABRIC

FABRIC

FLOORING



PAINT

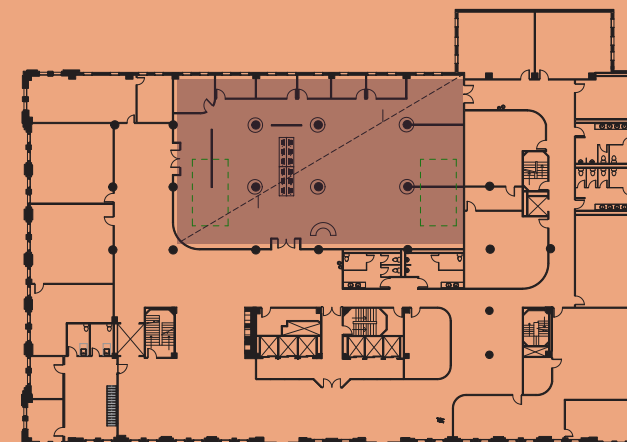
PAINT

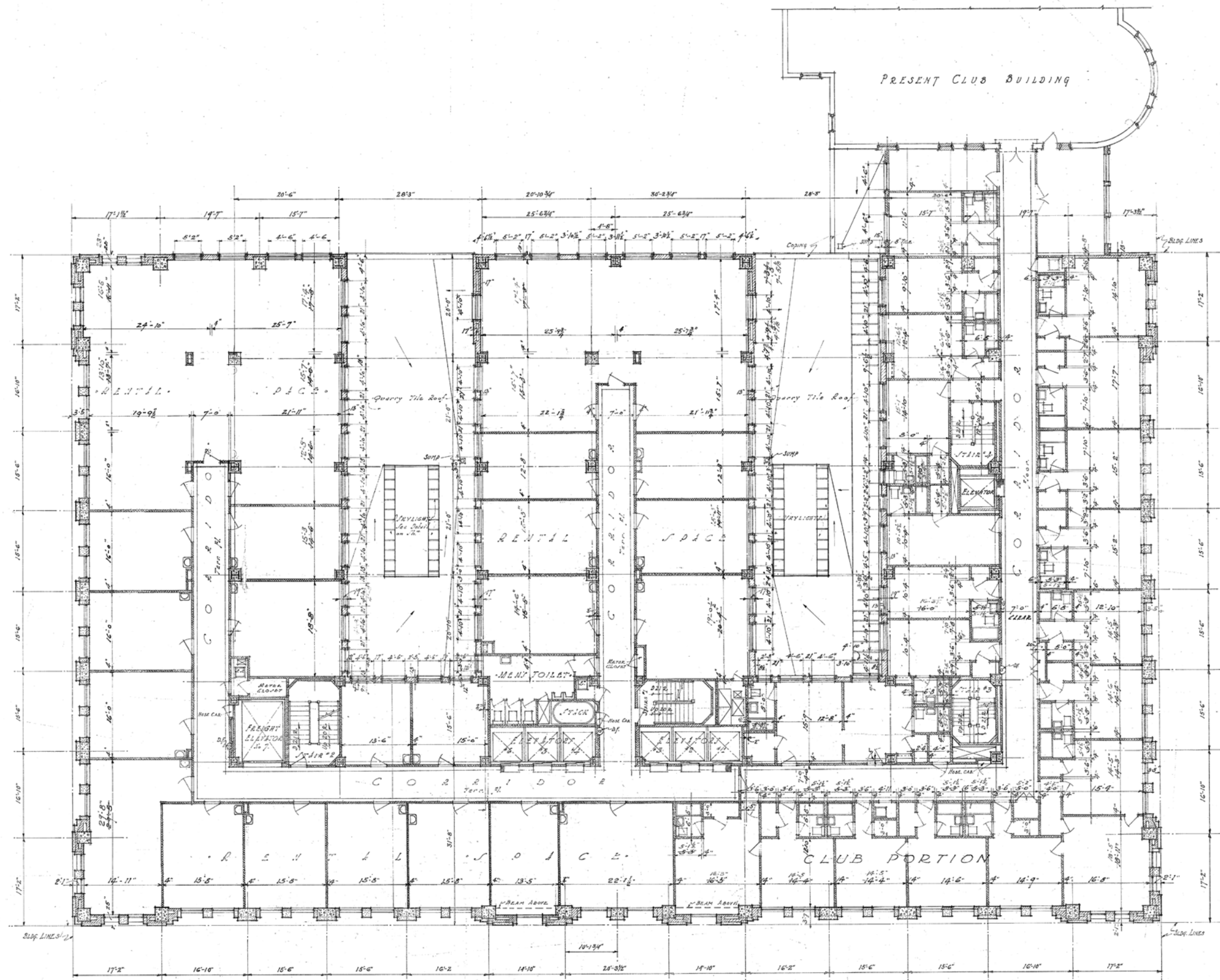
PAINT

PAINT

FLOORING

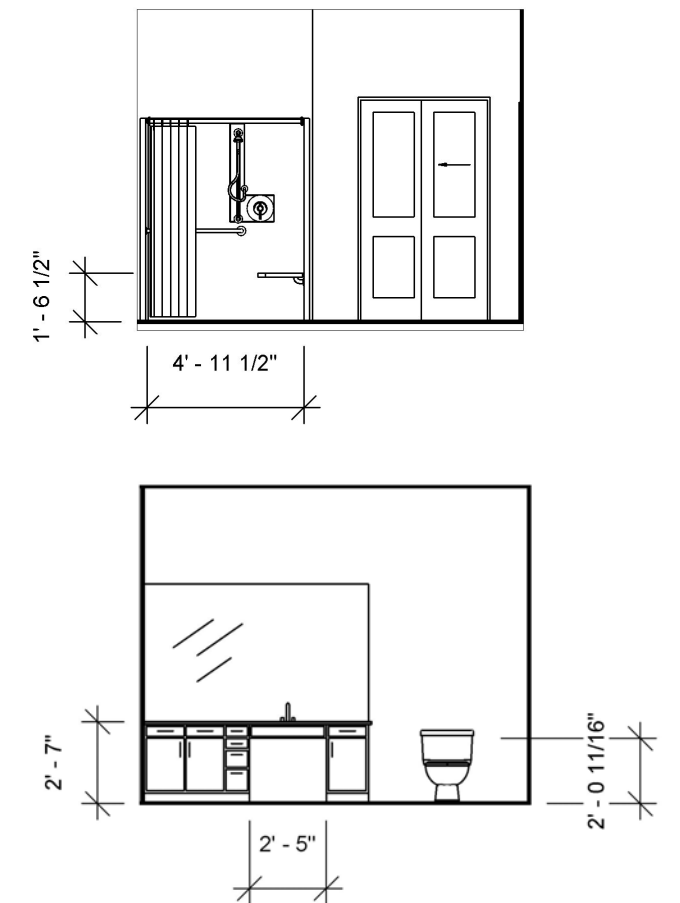
FLOORING





FOURTH FLOOR PLAN
Scale 1/8" = 1'-0"

THE DETROIT FREE PRESS
ALBERT RAHM, INC. ARCHITECTS
DETROIT, MICHIGAN
FOURTH FLOOR PLAN
REVISIONS: 100 DE THE



ADA Residential Bathroom Elevations



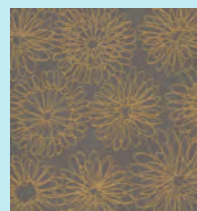


MATERIALS

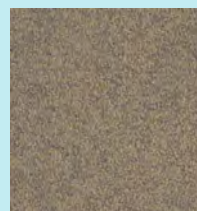




MATERIALS



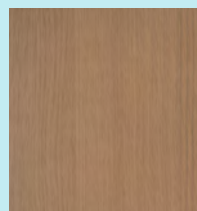
FABRIC



FLOORING



FLOORING



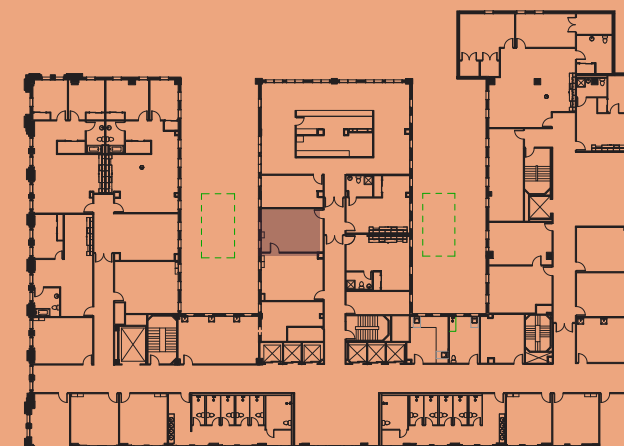
LAMINATE



PAINT

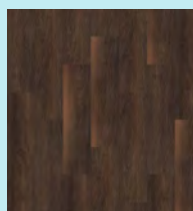


PAINT

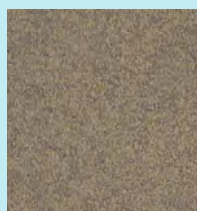




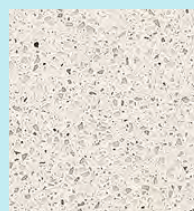
MATERIALS



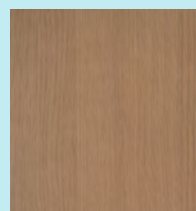
FLOORING



FLOORING



COUNTER



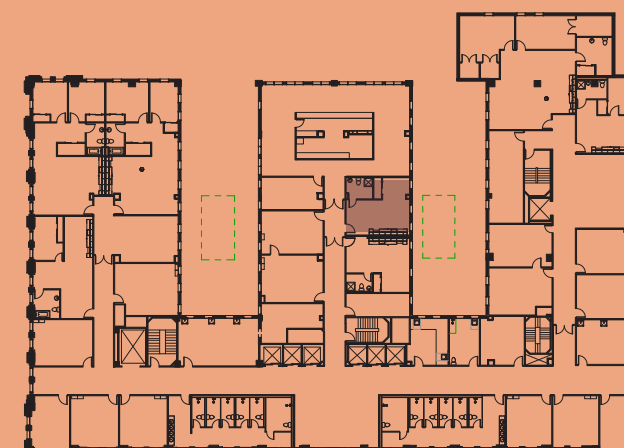
LAMINATE



PAINT

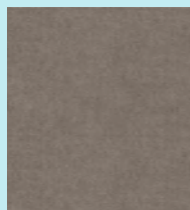


PAINT





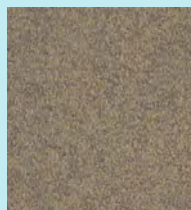
MATERIALS



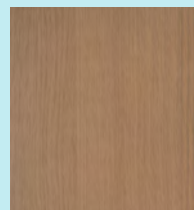
FABRIC



COUNTER



FLOORING



LAMINATE



PAINT

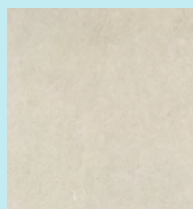


PAINT

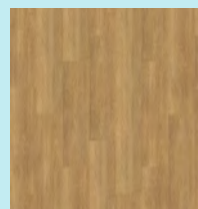




MATERIALS



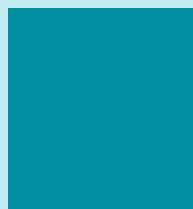
FLOORING



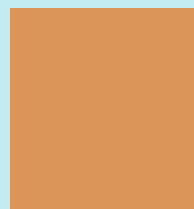
FLOORING



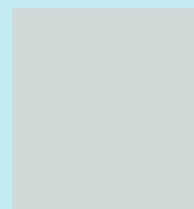
COUNTER



PAINT



PAINT

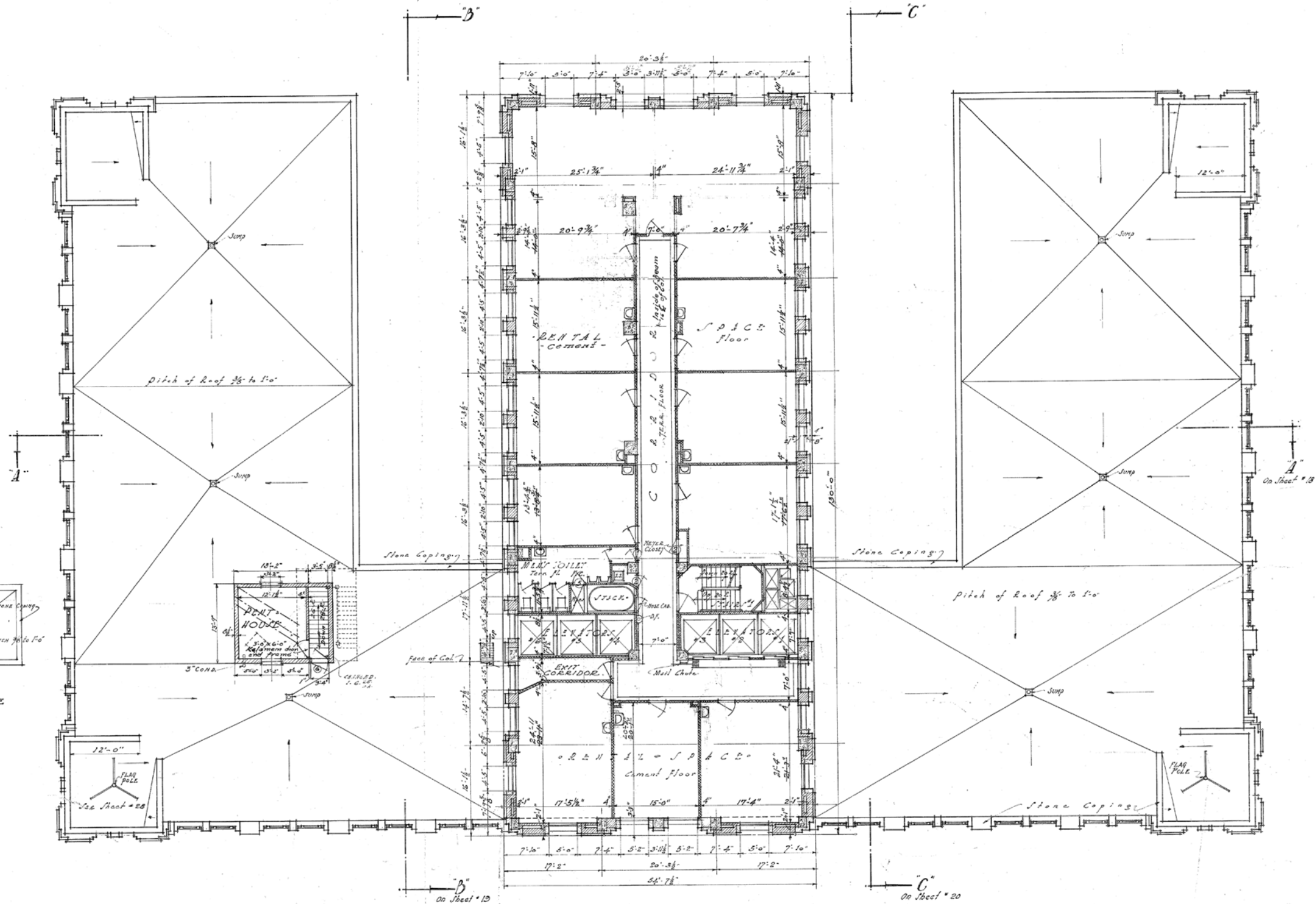
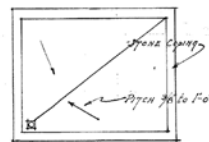


PAINT



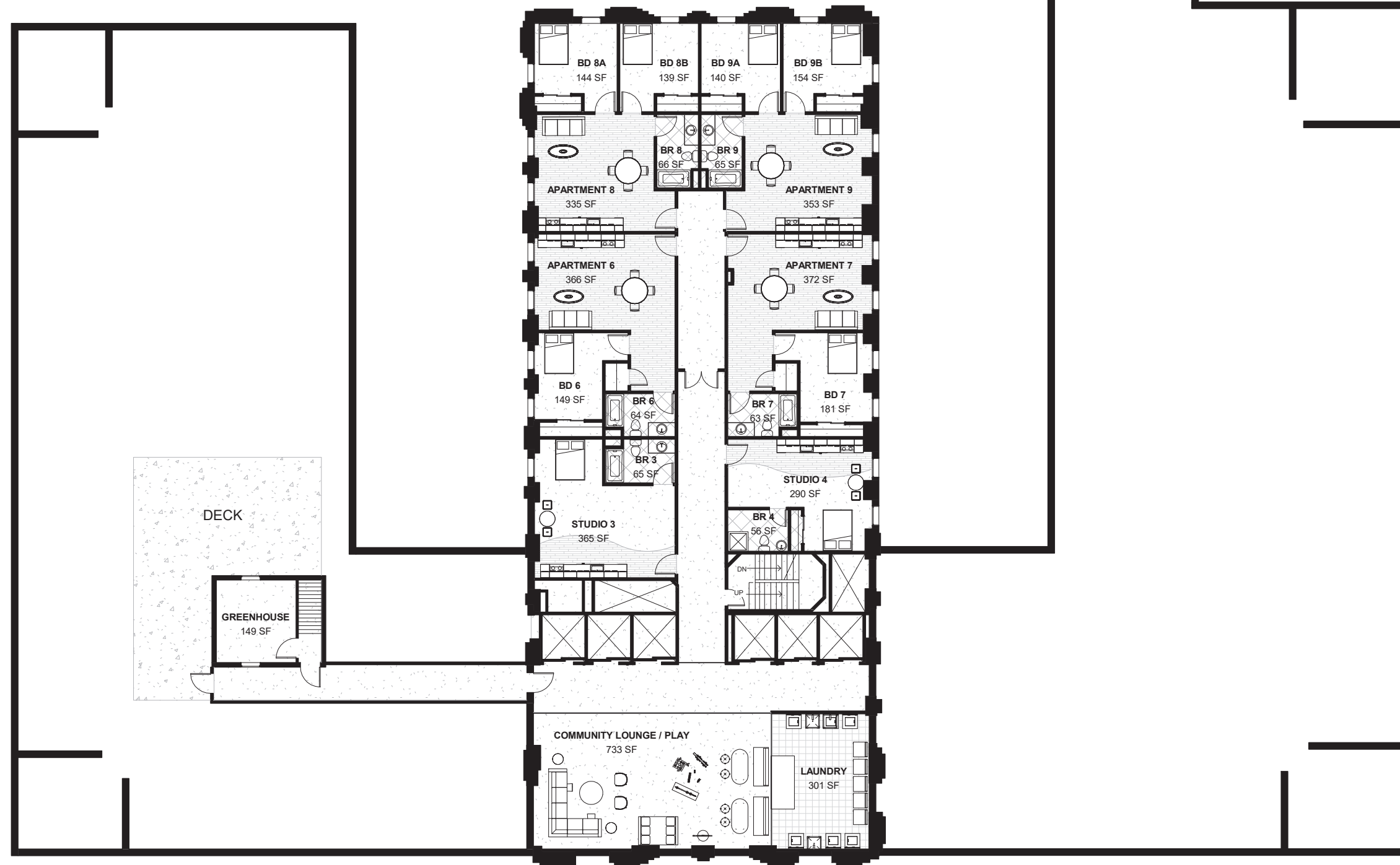


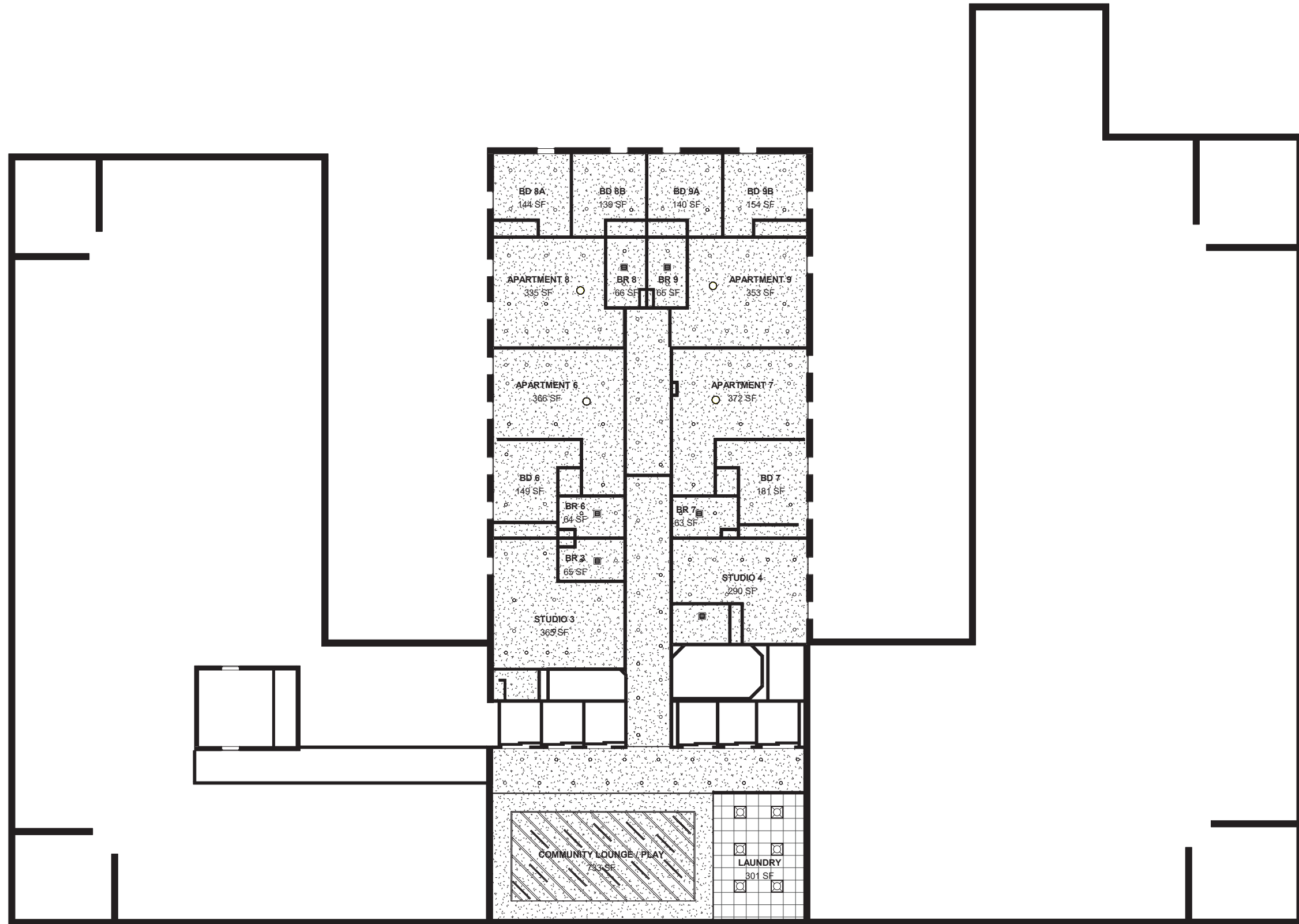
ROOF PLAN
OF PENTHOUSE



SEVENTH FLOOR PLAN
Scale 1/8\"/>

NOTE:
All interior Tile Partitions are to be 4\"/>







THANK
YOU