



R·I·T

Multi-Story | Multi-Purpose Design Studio

Higher Education | **Deaf Space**

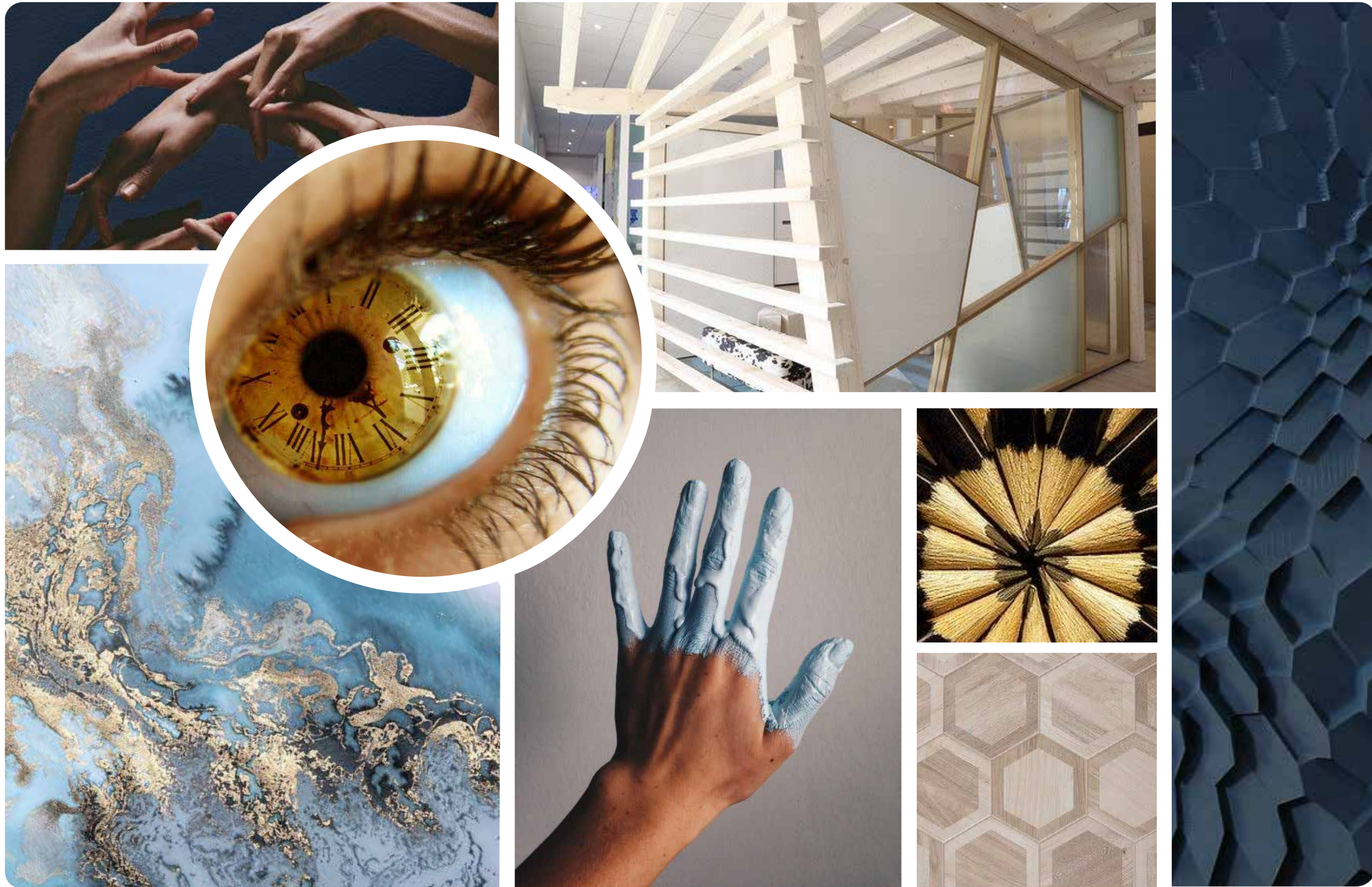
Fall 2016



4	MOOD BOARD	18	SECOND FLOOR PLAN	31	FIFTH & SIXTH FLOOR RCP
5	DESIGN CONCEPT	19	SECOND FLOOR RCP	32	RENDER/ FF& E
6-7	PROCESS WORK	20	RENDERS	33	SEVENTH FLOOR PLAN
8	CASE STUDY: INTERVIEWS	21	FF& E	34	SEVENTH FLOOR RCP
9	CASE STUDY: RESEARCH	22	THIRD FLOOR PLAN	35	RENDER/ FF& E
10	FIRST FLOOR PLAN	23	THIRD FLOOR RCP	36	SCHEME 1
11	FIRST FLOOR RCP	24	RENDERS	37	SCHEME 2
12	RENDERS	25	FF& E	38	SCHEME 3
13	FF& E	26	FOURTH FLOOR PLAN	39	THANK YOU!
14	MEZZANINE FLOOR PLAN	27	FOURTH FLOOR RCP		
15	MEZZANINE RCP	28	RENDERS		
16	RENDERS	29	FF& E		
17	FF& E	30	FIFTH & SIXTH FLOOR PLANS		



TABLE OF CONTENTS



MOOD BOARD

“Life is a circle. The end of one journey is the beginning of the next.” -- Joseph M. Marshall

A circle can have many meanings, it represents continuity, unity, and eternal inclusion. A circle has no edges and no corners; all parts are equally important in forming the shape and making it whole. The concept of the circle symbolizes inclusivity and collaboration, this concept is used to encourage interaction between students, faculty, and locals within RIT's new urban campus.

The multistory building in Detroit, Michigan, is aimed at connecting all of its users within the space, encouraging communication between deaf and hearing students. The Art Deco building's historical elements are highlighted within the school's new design. Facade restoration helps maintain the building's inclusion in the Detroit city environment. Curved walls within the building help minimize hazards for students and faculty. The inclusion of translucent materials expands visibility and provides connectivity between rooms. Flexible furniture throughout the building's shared spaces provides opportunities for the students, staff, and faculty to collaborate with one another. Various shades of blue provide contrasting colors to most skin tones, resulting in easier communication and increased visual clarity. Finish selections are chosen consciously to reduce distraction or visual confusion when communicating using American Sign Language. Sustainable design in the project can lengthen the lifetime of materials and improve the wellbeing of the users. Natural lighting utilized throughout the space can improve the air quality, increase energy levels for the public, and lower the cost of expenses with energy efficient design. The need for public entertainment, private education, and secure residential spaces requires special consideration in order to safely and enjoyably bring the RIT community and Detroit residents together.



DESIGN CONCEPT

First Floor	Lobby	Reception	Security Desk	Elevator/Stairs	Mike Storage Spaces	Restrooms	Security Stand	Retail Space	Cafe & Bookstore	Restaurant Space	Entry	Gym	Sports Equipment & Lockers
Lobby													
Reception	●	■											
Security Desk	●	●	■										
Elevator/Stairs	●	●	●	■									
Mike Storage Spaces	●			●	■								
Restrooms	●	●	●	●		■							
Security Stand						●	■						
Retail Space	●	●				●	●	■					
Cafe & Bookstore	●	●		●		●	●	●	■				
Restaurant Space	●	●		●		●		●	●	■			
Entry	●	●	●	●	●	●		●	●	●	■		
Gym	⊘	⊘			●	●				⊘	⊘	■	
Sports Equipment & Lockers					●	●						●	■

First floor - Mezzanine Plan will have bathrooms, lounge spaces, and small food stands.

LEGEND
● - PRIMARY
● - SECONDARY
⊘ - UNDESIRABLE

Second Floor	Theater	Arcade/Billiards	Security Stand	Elevator/Stairs	Public Meeting Rooms	Restrooms	Public Office Spaces	Lounge Spaces	Breakout spaces	Cafe & Bookstore	Collaborative/Studio Spaces	Event Hall
Theater	■											
Arcade/Billiards	●	■										
Security Stand	●	●	■									
Elevator/Stairs	●	●	●	■								
Public Meeting Rooms	⊘	⊘		●	■							
Restrooms	●	●	●	●	●	■						
Public Office Spaces	⊘	⊘		●	●	●	■					
Lounge Spaces		●		●	●	●	●	■				
Breakout spaces					●	●	●	●	■			
Cafe & Bookstore	●		●	●		●		●	●	■		
Collaborative/Studio Spaces	⊘	⊘		●	●	●	●	●	●		■	
Event Hall	⊘	⊘		●	●	●					●	■

LEGEND
● - PRIMARY
● - SECONDARY
⊘ - UNDESIRABLE

Third Floor	Security Stand	Classrooms	Student Meeting Spaces	Teacher Meeting Spaces	Lounge Spaces	Restrooms	Elevator/Stairs	Breakout Spaces	Cafe	Computer Labs	Teacher's Lounge	LGI Room	Faculty Meeting Spaces	Teacher Offices	Faculty Offices	Student Offices
Security Stand	■															
Classrooms	●	■														
Student Meeting Spaces		●	■													
Teacher Meeting Spaces			⊘	■												
Lounge Spaces		●	●	●	■											
Restrooms	●	●	●	●	●	■										
Elevator/Stairs	●				●	●	■									
Breakout Spaces		●	●	●	●	●	■									
Cafe	●	●	●	●	●	●	■									
Computer Labs		●	●		●	●		■								
Teacher's Lounge			⊘	●		●		●	■							
LGI Room	●	●	●		●	●				■						
Faculty Meeting Spaces					●	●	●	●			■					
Teacher Offices		●	●	●	●	●	●	●		●		■				
Faculty Offices					●	●		●				●	■			
Student Offices		●	●	●	●	●	●	●						■		

LEGEND
● - PRIMARY
● - SECONDARY
⊘ - UNDESIRABLE

**Faculty Includes: IT, Advisor, Facilities, etc.



PROCESS WORK

Fourth Floor	Dining Hall/Cafe	Lounge	Restrooms	Full Kitchen	Common Areas	Breakout Rooms	Studio Space	Elevator/Stairs
Dining Hall/ Cafe								
Lounge	●							
Restrooms	●	●						
Full Kitchen	●	●	●					
Common Areas	●	●	●					
Breakout Rooms	●	●			●			
Studio Space	⊘		●	⊘		●		
Elevator/Stairs	●	●	●		●			

LEGEND
● = PRIMARY
● = SECONDARY
⊘ = UNDESIRABLE

Fifth & Sixth Floor	Restrooms	Quads/ Student living	Studio Apartments	Faculty temp. Housing	Shared Utilities	Elevators/Stairs	Washrooms	Laundry	Lounge Area	Breakout Space	Shared Kitchen
Restrooms											
Quads/Student living	●										
Studio Apartments	●	●									
Faculty temp. Housing	●	⊘	⊘								
Shared Utilities	●	●	●								
Elevator/Stairs	⊘	●	●	●	●						
Washrooms	●	●	●	●							
Laundry		●	●	●	●						
Lounge Area			●	⊘							
Breakout Space	●			●		●	●		●		
Shared Kitchen			●	●				⊘		●	

LEGEND
● = PRIMARY
● = SECONDARY
⊘ = UNDESIRABLE

Seventh Floor	Library	Study Area	Studio Space	Elevator/Stairs	Bathrooms	Roof Greenhouse	Summer Movie Events
Library							
Study Area	●						
Studio Space	●						
Elevator/Stairs	●	●					
Bathrooms	●	●	●				
Roof Greenhouse	⊘	⊘					
Summer Movie Events	⊘	⊘				●	

LEGEND
● = PRIMARY
● = SECONDARY
⊘ = UNDESIRABLE



STUDENT INTERVIEW:
GRACE YUKAWA

Classrooms: mobile modular furniture or circular shaped layout for easy communication, also multiple screens to view lectures from

Ordering food: It can be difficult to point to everything-instead have a sheet to fill out

Materials/colors to avoid: Avoid a lot bright bold colors on walls and patterns such as stripes and zig-zags which make it hard to sign against.

Best flooring material for vibrations: Hardwood, worst-carpet.

Technology problems: The fire alarm and doorbell light are similar, so they are easily confused. Using a color instead of a flashing pattern would be better.

Sensory Reach: Wider hallways are better

Gosnell Hall has a lot of carts in the hallway which Grace says she bumps into often.

PROFESSOR INTERVIEW:
REGINA KIPERMAN- KISELGOF

Classrooms: recording devices added into classroom settings would help replace the need for note takers. Storage space included beneath desks eliminates clutter on work surfaces.

Ordering food: digital kiosks for ordering would eliminate mistakes and miscommunication with specific orders

Materials/colors to avoid: no plaid or stripes or checkers or polka dots, too busy to visualize the signs.

Best Flooring material: hardwood & tile (hard surfaces), carpet is the worst, it muffles sound.

Technology Problems: Using different light patterns for an alert system at home helps, but takes time to recognize.

Sensory Reach: glass, wider hallways, curved hallways, and windows in between spaces are helpful.



CASE STUDY: INTERVIEWS

RESEARCH ON DEAFSPACE:

5 major points of deafspace: sensory reach (addressed by our glass walls and open floors), space and proximity, mobility and proximity, sight and color, and acoustics

Good to encourage creative and collaborative thinking, design with alternate uses in mind

Campfire Configuration

Important to teaching deaf- diversity of teaching & educational styles

Technologies:

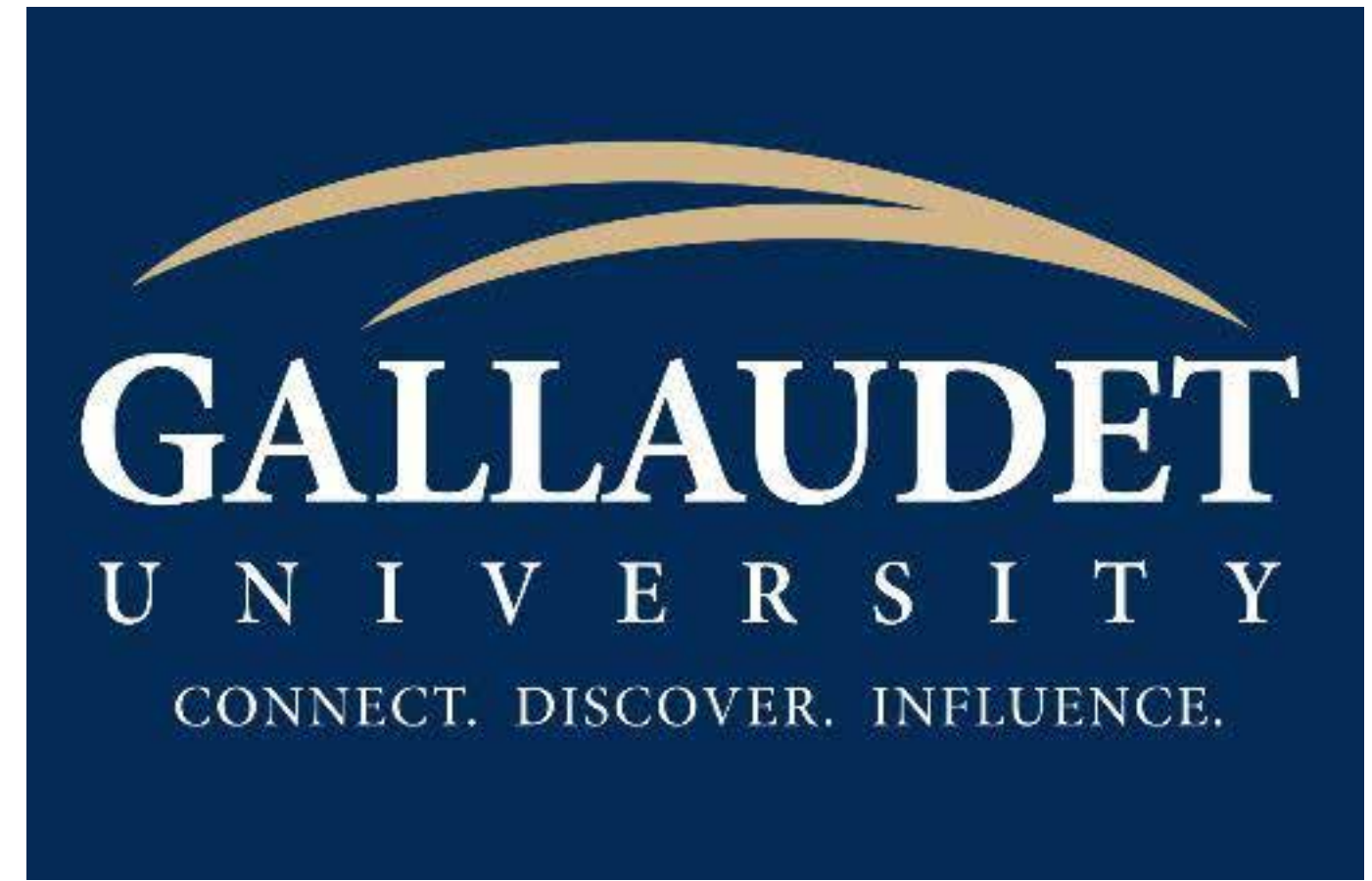
Closed captioning

Cochlear implants

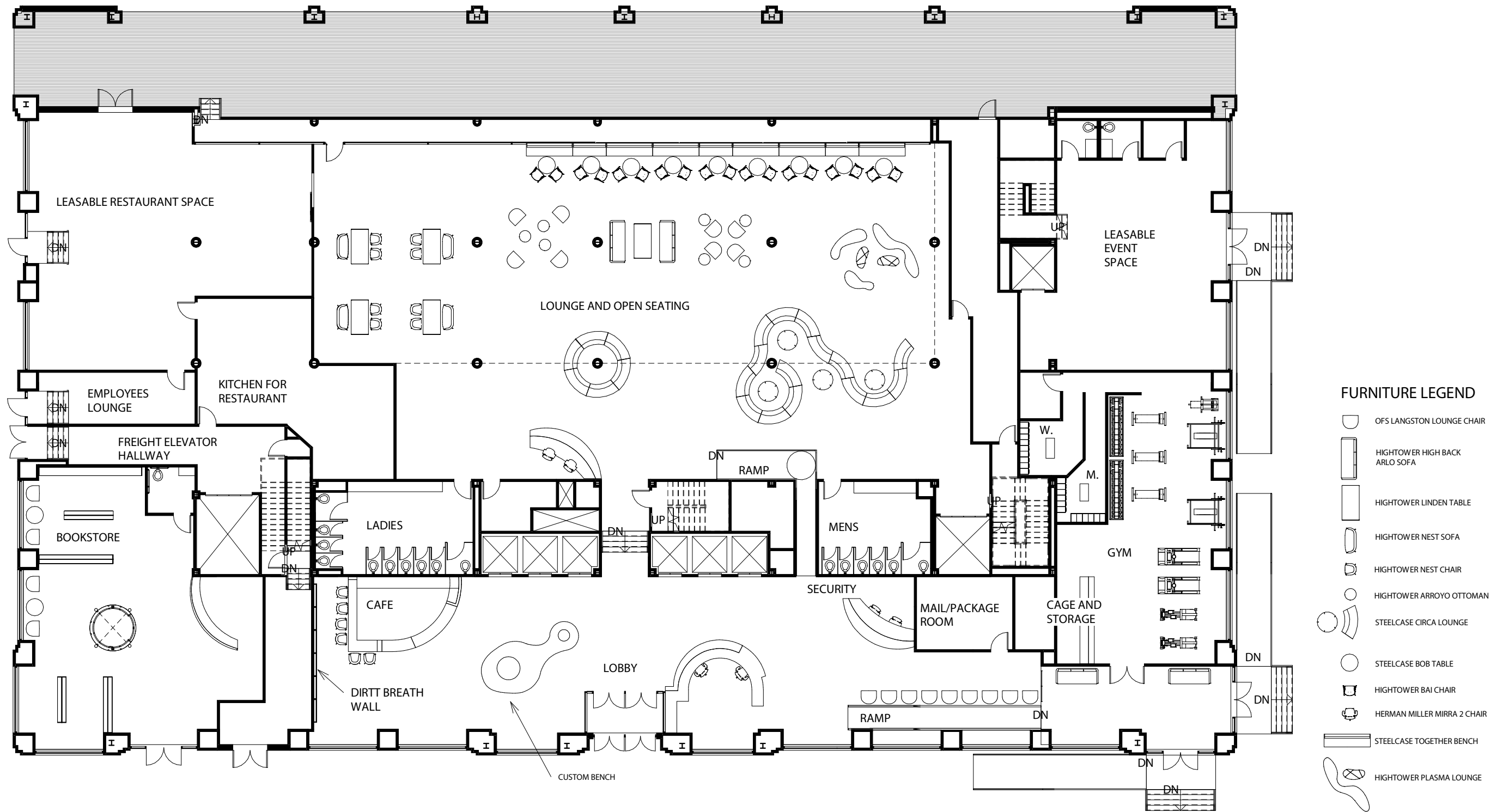
Text relay/ video relay

Motion savvy

Convo light app

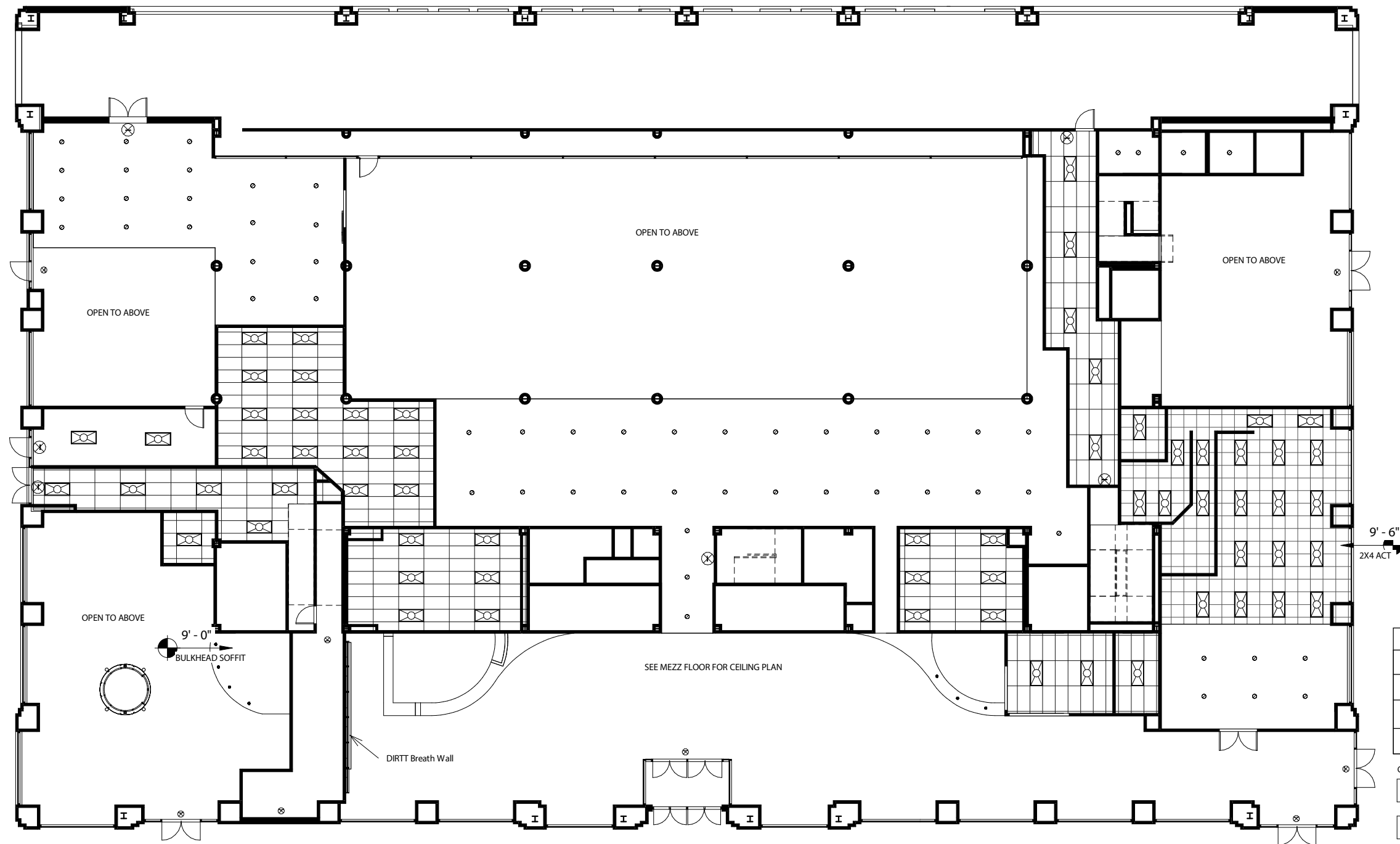


CASE STUDY: RESEARCH



1 1ST FLOOR PLAN
1/16" = 1'-0"

FIRST FLOOR PLAN



LIGHTING LEGEND	
	2X4 PARABOLIC LIGHT
	RECESSED LIGHT
	EUREKA SILENE PENDANT
	EXIT SIGN

CEILING HEIGHT 10' - 4" AFF UNLESS OTHERWISE NOTED.

	2X4 ACT CEILING
	GWB CEILING

1 1ST FLOOR PLAN
1/16" = 1'-0"



FIRST FLOOR RCP

LOBBY & LOUNGE



BRIGHT CONTRASTING FLOOR MATERIALS AND COLOR BLOCKING ON THE WALLS ASSIST IN WAYFINDING FOR THE VISUALLY IMPAIRED

GLASS WALLS AND FLOOR COLOR BLOCKING PROVIDE VISIBILITY FOR COMMUNICATION BETWEEN THE FIRST, MEZZANINE, AND SECOND FLOORS



RENDERS

OFS LANGSTON LOUNGE CHAIR



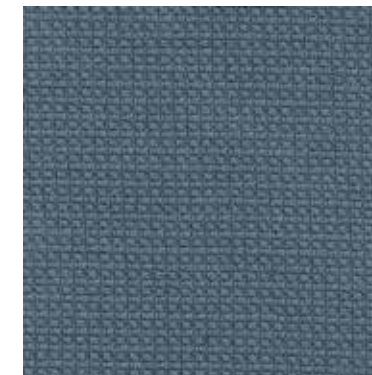
STEELCASE CIRCA LOUNGE



FURNITURE IS
CONSTRUCTED AND
CONFIGURED IN THE
ROUND TO
ENHANCE ASL
VISUAL
COMMUNICATION

COLORS LIKE BLUE
AND ORANGE ARE
USED AS ACCENTS
TO CONTRAST SKIN
TONES FOR EASIER
COMMUNICATION
USING ASL

FREE FORM LA2
CONNECTED
LIGHTS (upper right)
ARE USED TO
CREATE AN
ILLUMINATED FOCAL
POINT IN THE ENTRY
AND LOBBY



CAMIRA-MILL:
MANHATTAN

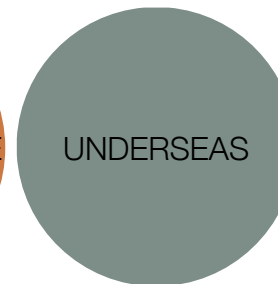


ARCCOM
COMPASS:
PAPAYA

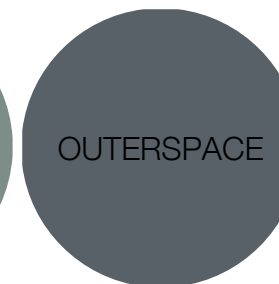
SHERWIN WILLIAMS



RHUMBA ORANGE



UNDERSEAS

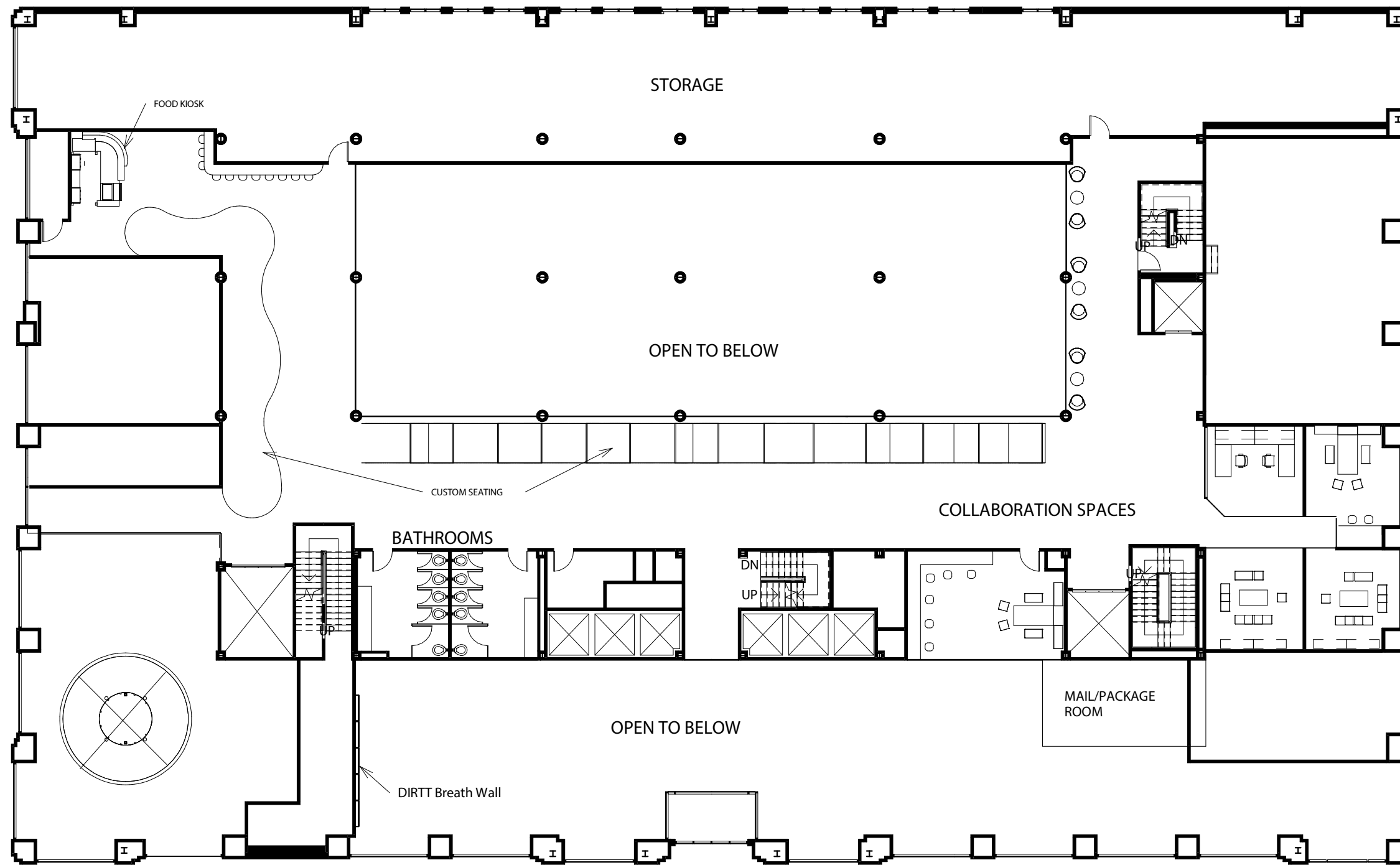





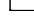

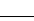

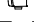

OUTERSPACE



LEMON VERBENA



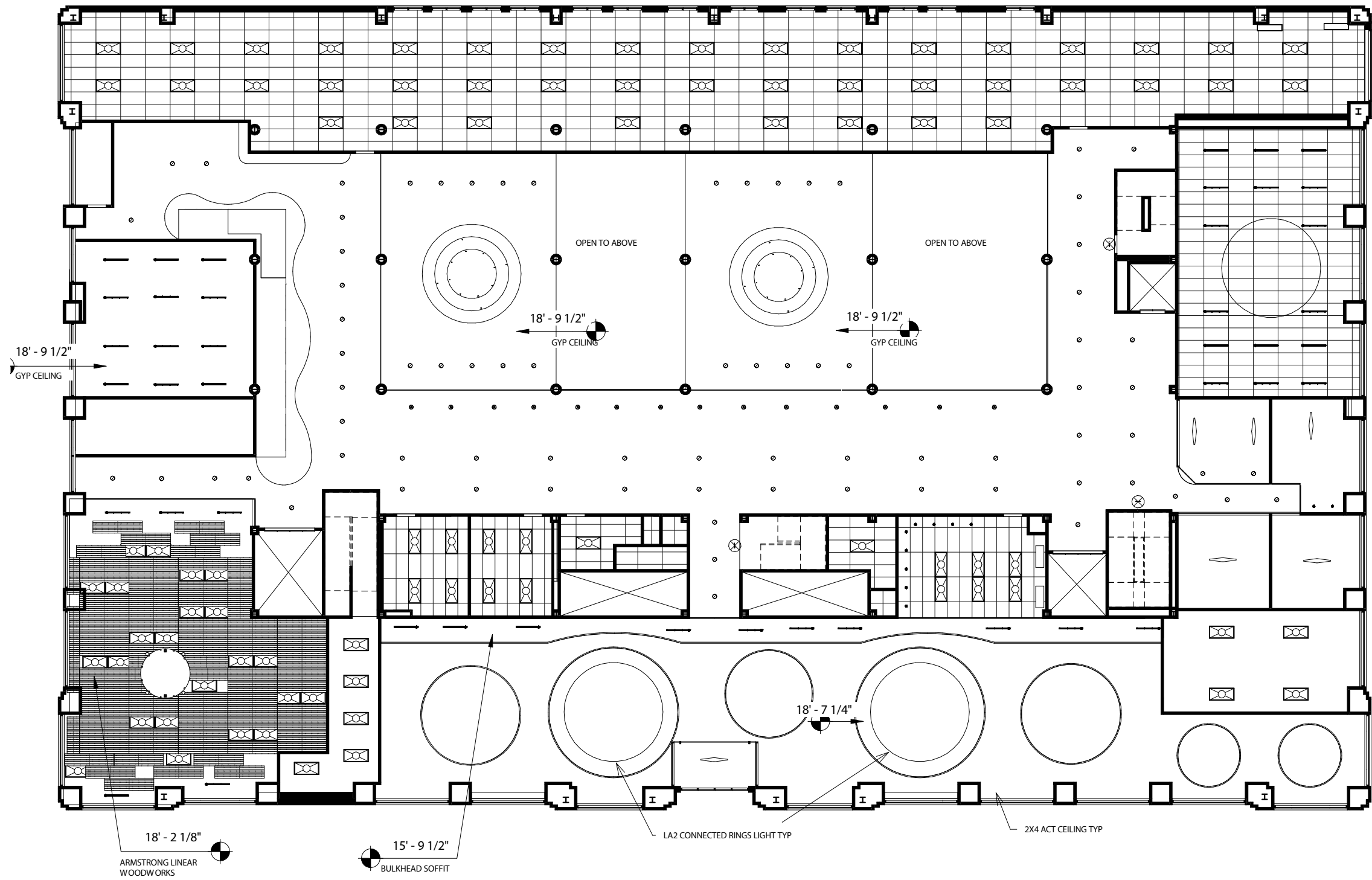


- FURNITURE LEGEND**
-  HIGHTOWER DIDI CHAIR
 -  HIGHTOWER ARROYO OTTOMAN
 -  STEELCASE LOX STOOL
 -  HAWORTH SE04 MEDIUM BENCH
 -  HAWORTH SE04 SMALL BENCH
 -  HAWORTH SE04 TABLE
 -  HAWORTH RESIDE WORKSURFACE
 -  HAWORTH VERY TASK CHAIR
 -  HAWORTH BESIDE STORAGE & DESK SYSTEM

① Mezz Floor
1/16" = 1'-0"



MEZZANINE FLOOR PLAN



LIGHTING LEGEND	
	2X4 PARABOLIC LIGHT
	LUTRON IVALO PENDANT
	RECESSED LIGHT
	EUREKA SILENE PENDANT
	EUREKA FLARE LINEAR PENDANT
	LA2 LIGHTART CONNECTED RINGS
	EXIT SIGN

CEILING HEIGHT 7' - 4 1/2" UNLESS OTHERWISE NOTED

2X4 ACT CEILING

GWB CEILING

① Mezz Floor
1/16" = 1'-0"



MEZZANINE RCP

“RIBBON CANDY” & DINING BOOTHS



THE MEZZANINE FLOOR HAS A CUSTOM BUILT “RIBBON CANDY” SEATING AREA. STUDENTS MAY CHOSE TO SIT UNDER THE ARCHES ON STOOLS AND SOFAS OR SIT ON TOP OF THE PADDED CURVED-BENCH

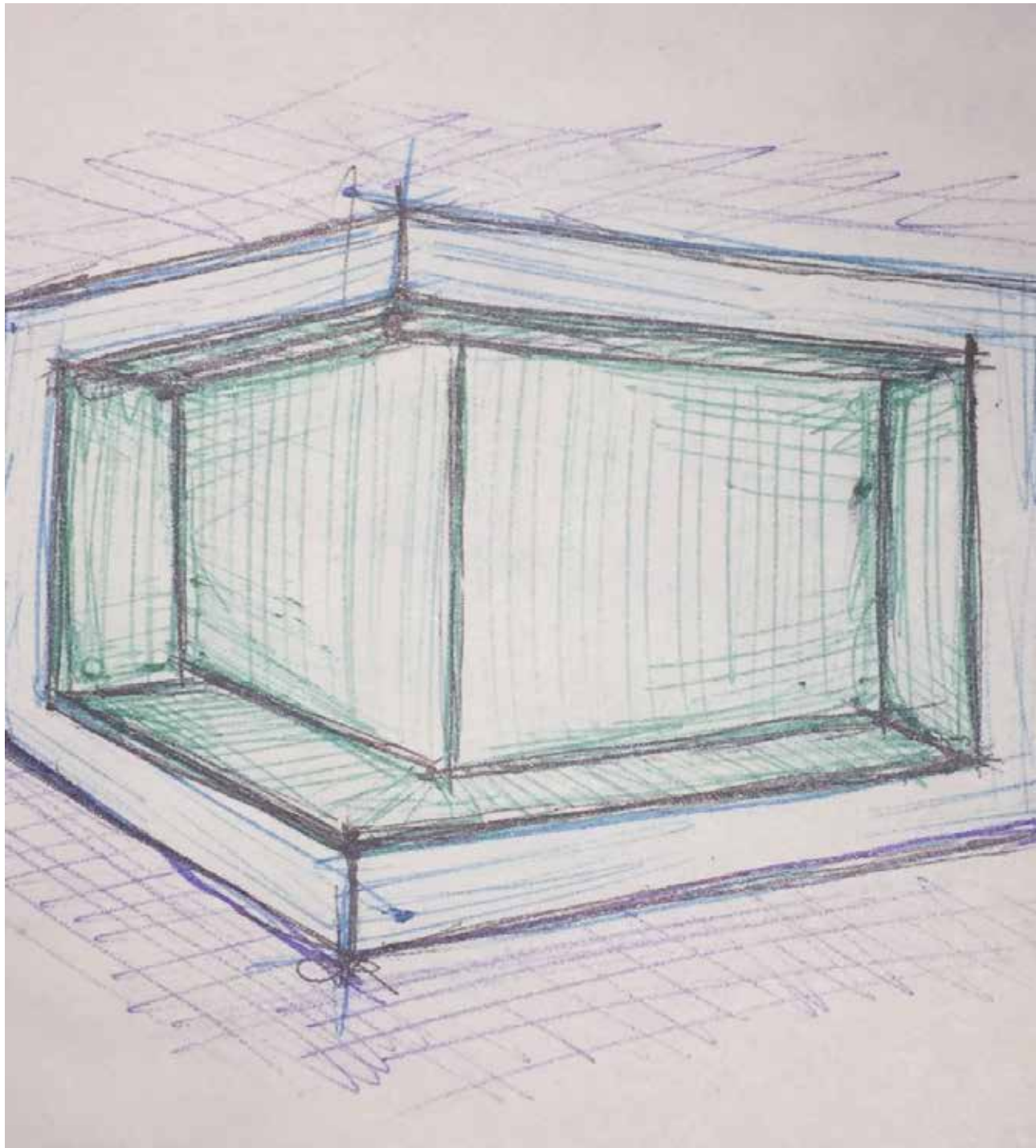
THE SHAPE PROVIDES EASY AND ABUNDANT SPACE FOR COMMUNICATION BETWEEN STUDENTS. THE FURNITURE UNDERNEATH THE ARCHES IS FLEXIBLE AND CAN BE MOVED SO THAT COMMUNICATION CAN BE DONE IN THE ROUND

BUILT IN DINING BOOTHS ON THE MEZZANINE ARE CONVENIENTLY LOCATED AROUND THE CORNER FROM FOOD KIOSKS AND VISIBLE (WITH THE HELP OF THE ORANGE SOFFIT) FROM THE FIRST FLOOR LOUNGE AND SECOND FLOOR CLASSROOM SPACES

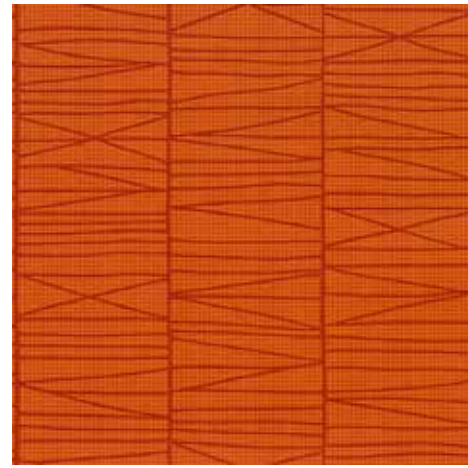
THE ORANGE FABRIC OF THE BENCH SEAT AND THE STEP RUN CONTRASTS WITH THE BLUE BACKGROUND CREATING A VISUAL DIFFERENTIATION BETWEEN THE RISE AND SEAT, HELPING DIRECT THE VISUALLY IMPAIRED



RENDERS



DINING BOOTHS



KNOLL TIGHT ROPE
FIREFLY
UPHOLSTERY ON
DINING BOOTHS &
HIGH TOWER
ARROYO

KNOLL UTRILLO
FRENCH CHALK ON
RIBBON CANDY



GO FLOORS- ISLAY FOG



HIGH TOWER ARROYO

SHERWIN WILLIAMS



LEMON
VERBENA



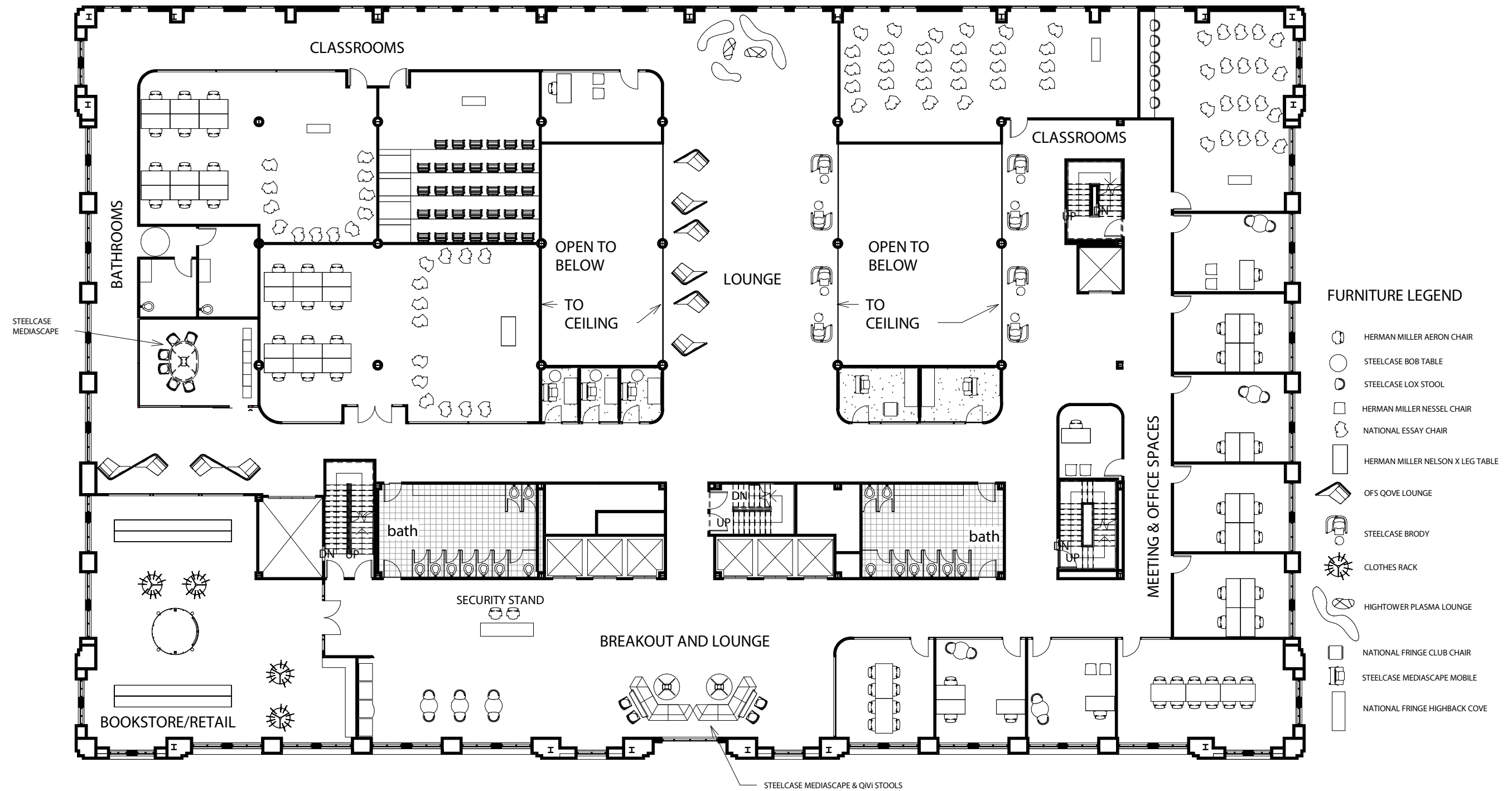
BLUSTERY
SKY



DETERMINED
ORANGE

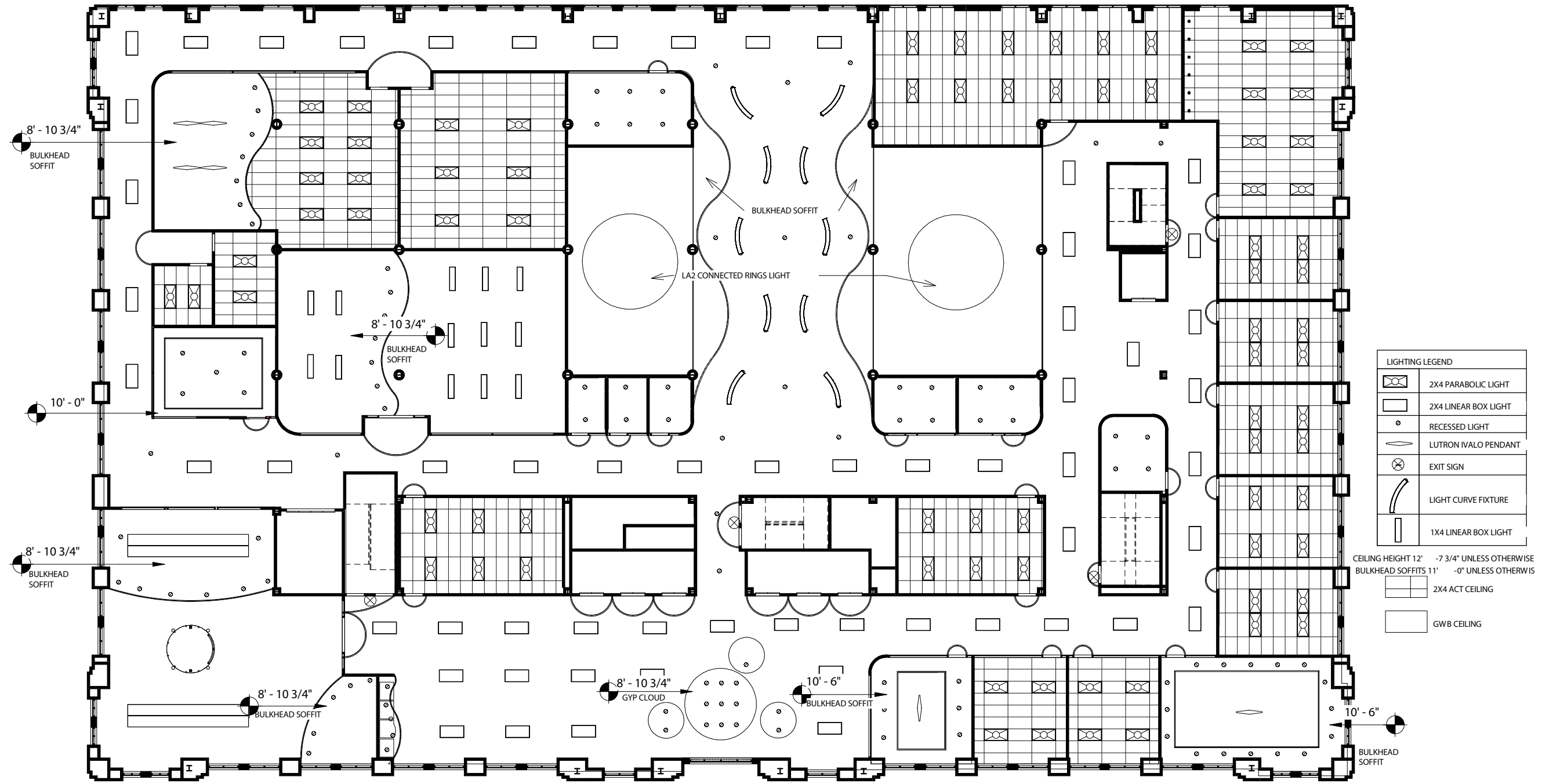


FF&E



1 2ND FLOOR PLAN
1/16" = 1'-0"

SECOND FLOOR PLAN



① 2ND FLOOR PLAN
 1/16" = 1'-0"

SECOND FLOOR RCP

CLASSROOM & PHONE BOOTHS



CLASSROOMS ARE EQUIPED WITH DIRTT MEDIAWALL, WHICH INCLUDES VIDEO SCREENS AND WRITABLE SURFACE SPACE

COLLABORATION IS ENCOURAGED IN THE LECTURE SPACE, ESSAY CHAIRS IN A CIRCLE FORMATION PROVIDE EASY DISCUSSION BETWEEN STUDENTS AND PROFESSORS

THE ORANGE SOFFIT ABOVE THE TABLES HELPS SEPARATE THE COLLABORATION SPACE FROM THE LECTURE AREA

PHONE BOOTHS PROVIDE STUDENTS LARGER AND MORE PRIVATE SPACES TO MAKE VIDEO CALLS

DEAF SPACE/ ASL REQUIRES MORE SPACE FOR HAND MOVEMENTS, THE PHONE BOOTHS ACCOMMODATE MULTIPLE STUDENTS AT A TIME

ORANGE SOFFITS AND NUMBERS ARE USED HERE TO AID WAYFINDING BY DIRECTING STUDENTS TO ALL DOORWAYS



RENDERS

Chevron Back

Unique shape of back holds backpacks or bags and prevents slipping to floor.

Vented Back

The back features cutouts which provide ventilation.

Armrest

Armrest can also be used to hold a backpack or bag.

Chevron Worksurface

Worksurface comfortably supports all users and eliminates need to specify left and right handed units; is large enough for both a device and notepad.

360° Swivel Seat

Lightly textured shell flexes for comfort; optional upholstered seat cushion is available.

Plastic Shell

Wall-friendly design; shell swivels within the radius of the base.

Frame and Tablet Arm Support

The frame and tablet arm support always match in color and are available in dark grey or black.

Cup Holder

Optional black swivel cup holder.

Tray

To avoid dirt accumulation, the tray is flat with cut-outs to allow debris to easily be swept away. The chevron design allows bags left on the floor to be tucked in securely, and also reduces tripping hazards.

Easy Assembly

Simple, no tool assembly. Simply place the tablet arm onto the frame, followed by the shell, then sit.

Casters

Hard or soft roll control casters are available and provide mobility on hard or soft flooring surfaces; hard or soft glides are available for stationary models.



ESSAY CHAIR

CLASSROOMS CONTAIN THE ESSAY CHAIR BY NATIONAL OFFICE FURNITURE

THE CHAIR'S DESIGN ACCOMODATES DEAF AND HARD OF HEARING NEEDS SUCH AS CLEAR DESK TOPS TO PROVIDE SPACE FOR COMMUNICATING USING ASL

SHERWIN WILLIAMS



LEMON VERBENA



RHUMBA ORANGE



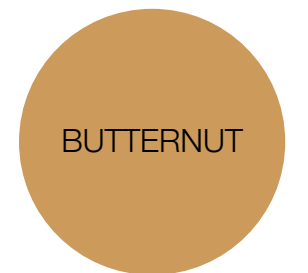
BLUSTERY SKY



UNDERSEAS



DETERMINED ORANGE



BUTTERNUT

FLOORING SELECTIONS



INTERFACE CARPET PIGEON CONNECTIONS



ARMSTRONG HICKORY WESTERN MOUNTAIN



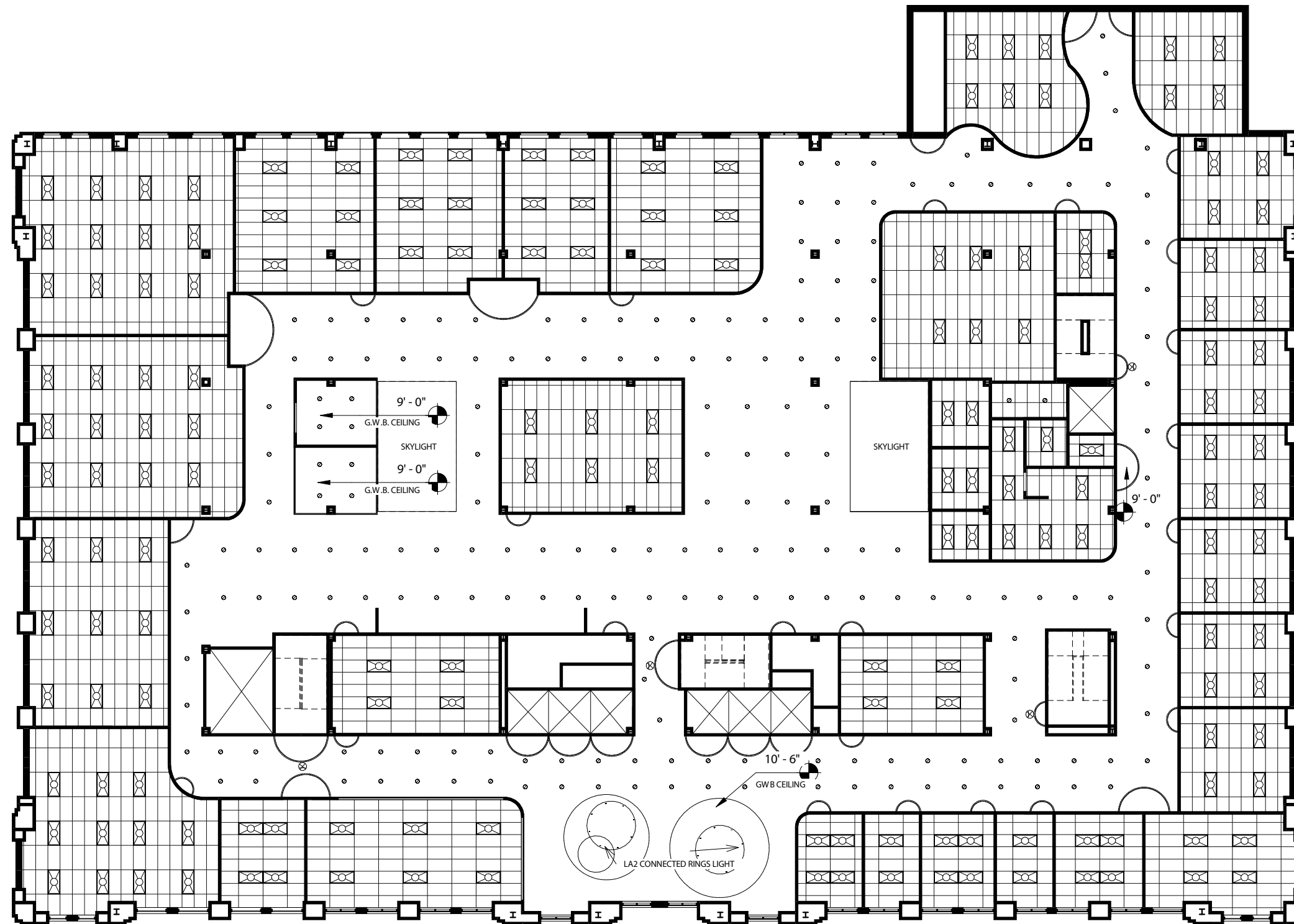


- FURNITURE LEGEND**
- HERMAN MILLER NELSON X LEG TABLE
 - HERMAN MILLER AERON CHAIR
 - HERMAN MILLER EVERYWHERE TABLE
 - HERMAN MILLER MIRRA 2 CHAIR
 - STEELCASE BOB TABLE
 - STEELCASE LOX SEAT
 - HERMAN MILLER NESSEL SIDECHAIR
 - NATIONAL OFFICE ESSAY CHAIR
 - HIGH TOWER BRECK LOUNGE
 - HIGH TOWER ANT BAR STOOL
 - HIGH TOWER LINDEN
 - HIGH TOWER NIMBUS
 - HIGH TOWER KONA

① 3rd Floor
1/16" = 1'-0"



THIRD FLOOR PLAN



LIGHTING LEGEND	
●	RECESSED CAN LIGHT
▭ (with diagonal lines)	2' X 4' PARABOLIC LIGHT
⊗	EXIT SIGN

TYP. CEILING HEIGHT: 10' - 9" A.F.F.

TYP/ ROUND SOFFIT HEIGHT ABOVE DOORS: 9' - 0" A.F.F.

▭ 2' X 4' A.C.T. CEILING TILE

▭ G.W.B. CEILING

① 3rd Floor
1/16" = 1'-0"



THIRD FLOOR RCP

COLLABORATION CUBE & "CUBBIES"



THE COLLABORATION CUBE INCLUDES THREE PLANES OF AVAILABLE WHITEBOARD SURFACE FOR STUDENTS AND PROFESSORS TO BRAINSTORM IDEAS ON

THE TIERED BENCH ADJACENT TO THE CUBE ALLOWS FOR SMALL CLASSES AND GROUPS TO MEET AND IDEATE IN A FUN AND INFORMAL SETTING

CONVENIENTLY LOCATED IN THE CENTER OF THE THIRD FLOOR, THIS BREAKAWAY SPACE IS AVAILABLE ANYTIME THROUGHOUT THE WEEK

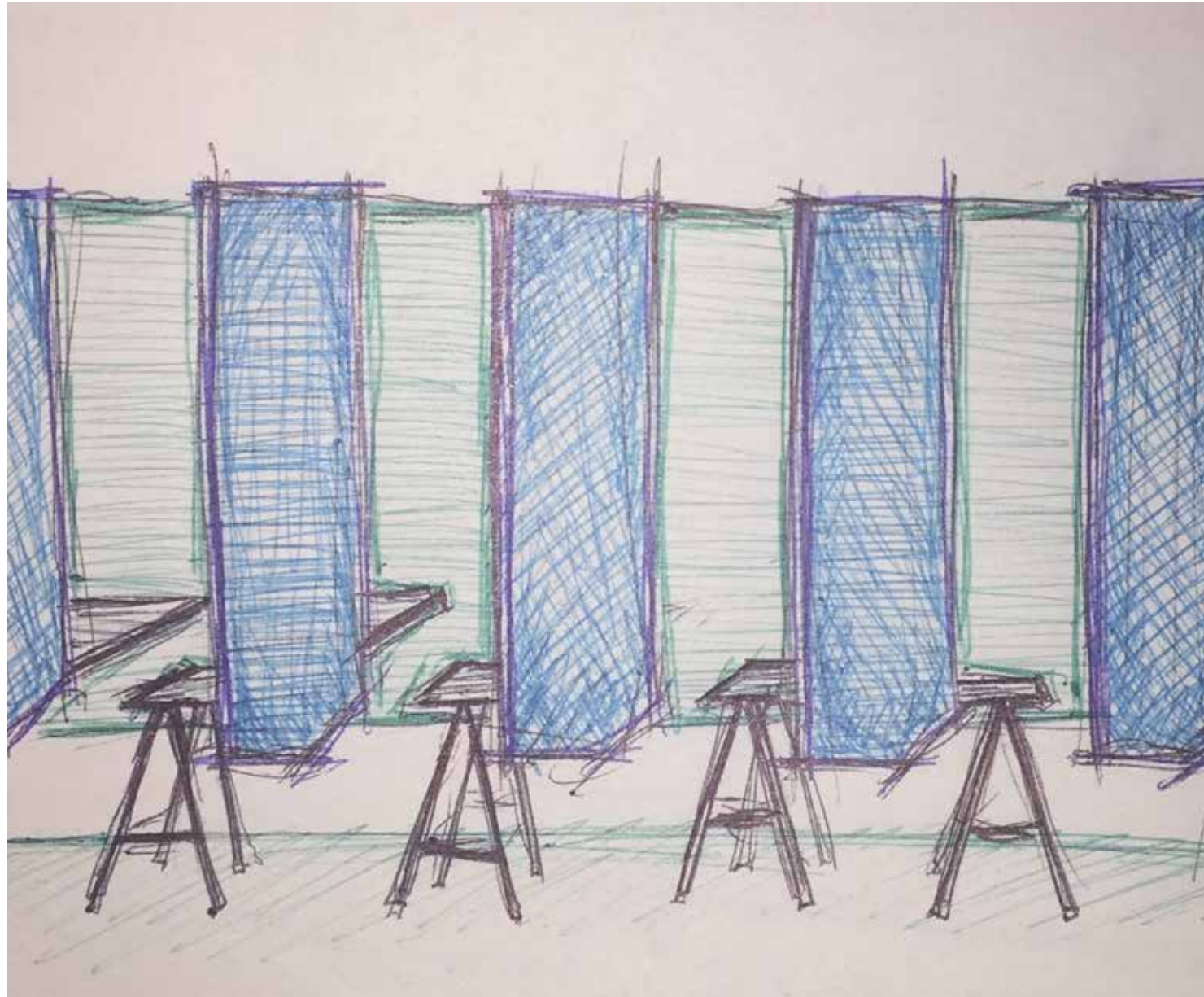
THE "CUBBIES", ALSO CENTRALLY LOCATED ON THE THIRD FLOOR ARE DESIGNED TO ALLOW STUDENTS A CONVENIENT SPACE FOR WORKING PRIVATELY

THE "CUBBIES" WERE CREATED TO ALLOW STUDENTS EASY ACCESS TO AN INDIVIDUALIZED SPACE WITHOUT LEAVING THE ACADEMIC FLOOR

THE FLOOR TO CEILING CHALKBOARD, ACROSS FROM THE "CUBBIES", ALLOWS STUDENTS ANOTHER OPEN SPACE FOR IDEATION; HIGHTOWER NIMBUS STOOLS MAKE RECONFIGURING THE SPACE FUN



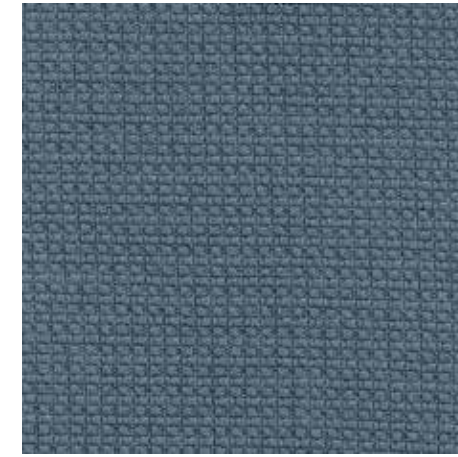
RENDERS



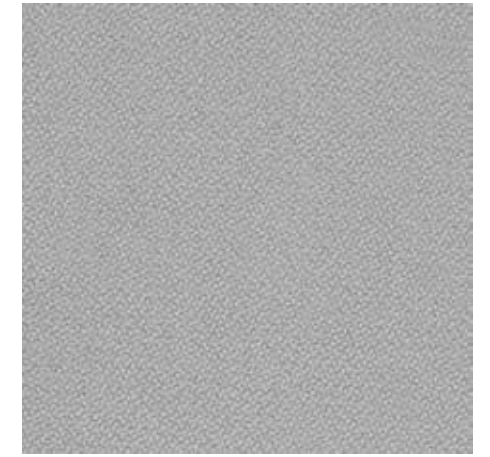
“CUBBIES”



KNOLL ECLAT WEAVE
TANGERINE



CAMIRA MILL COLLECTION
MANHATTAN

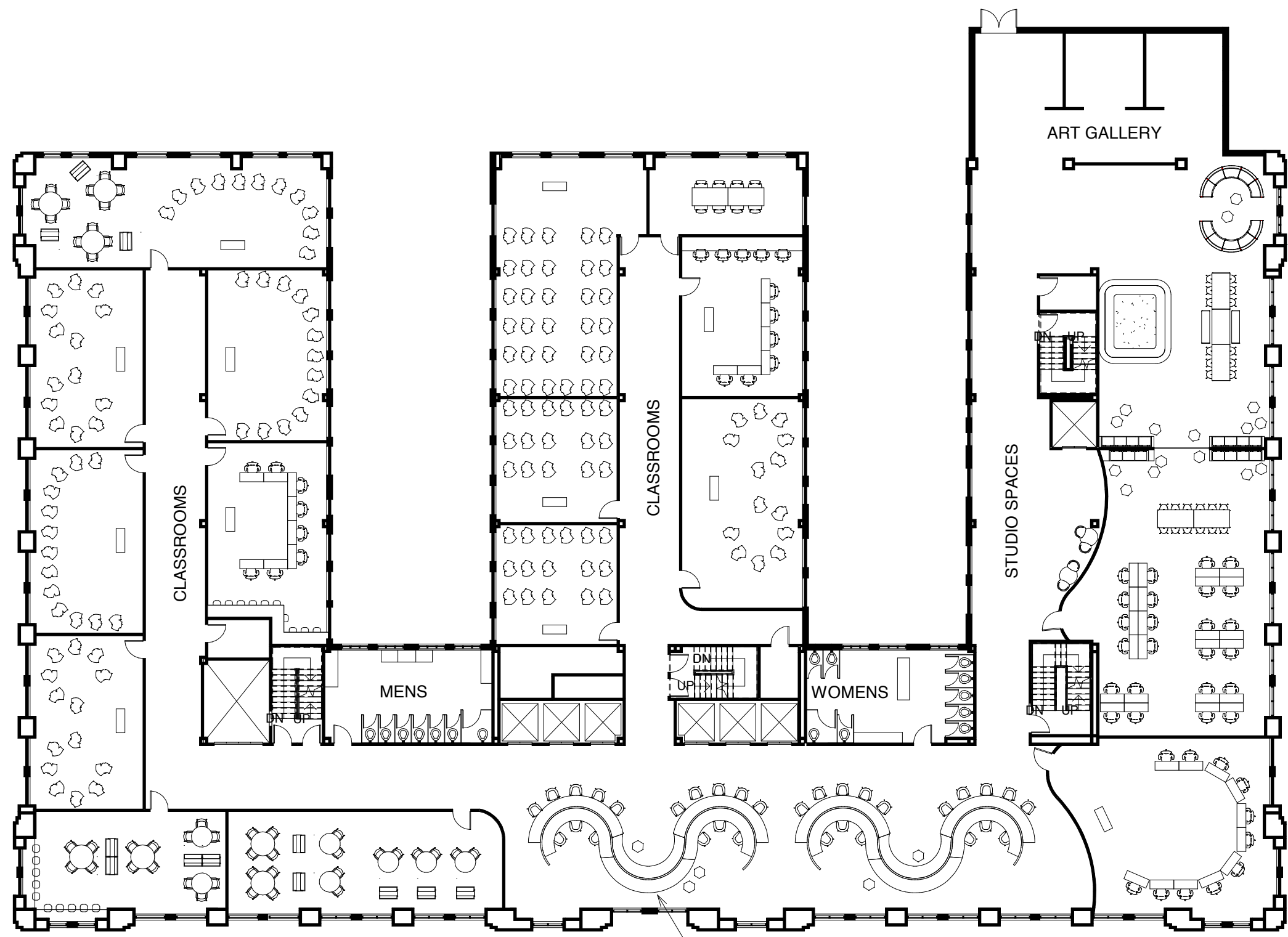


CAMIRA MILL COLLECTION
OXYGEN VIRTUE



HIGH TOWER NIMBUS





FURNITURE LEGEND

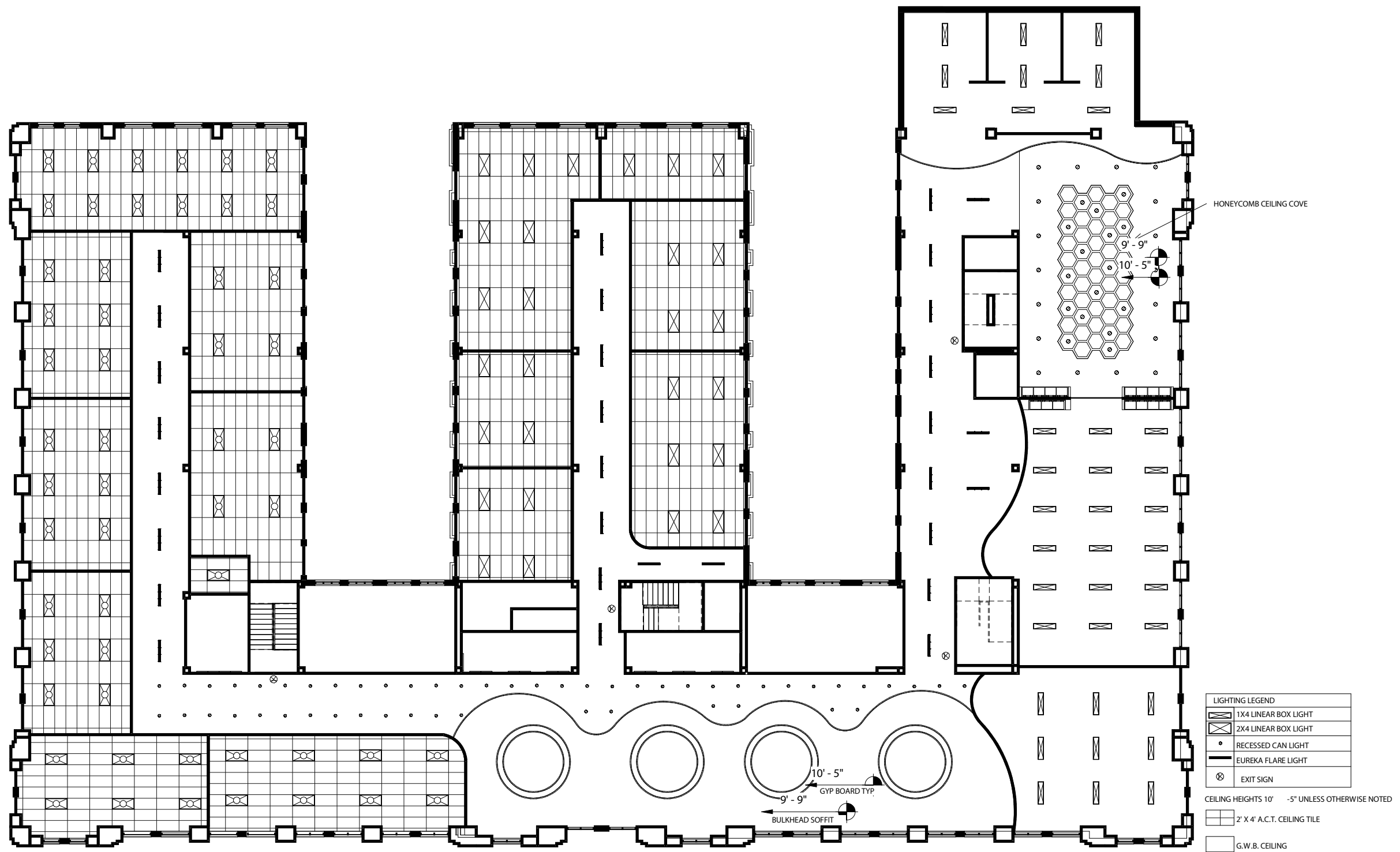
- STEELCASE LOX STOOL
- ☐ HERMAN MILLER ASIDE CHAIR
- ▭ HERMAN MILLER EVERYWHERE TABLE
- ⊕ HERMAN MILLER MIRRA 2 CHAIR
- STEELCASE BOB TABLE
- STEELCASE LOX SEAT
- STEELCASE GROUPWORK TABLE
- ⊕ NATIONAL OFFICE ESSAY CHAIR
- ⬡ HIGH TOWER PRISM OTTOMAN
- ⊕ HIGH TOWER ANT BAR STOOL
- ▭ HIGH TOWER LINDEN
- ⊕ HIGH TOWER NEST CHAIR
- ▭ STEELCASE GROUPWORK DISPLAY
- ⊕ GATEWAY LOUNGE ELEMENTS

① 4th Floor
1/16" = 1'-0"

CUSTOM BENCH & TABLE CASEWORK



FOURTH FLOOR PLAN



① 4th Floor
1/16" = 1'-0"

LIGHTING LEGEND	
	1X4 LINEAR BOX LIGHT
	2X4 LINEAR BOX LIGHT
	RECESSED CAN LIGHT
	EUREKA FLARE LIGHT
	EXIT SIGN
CEILING HEIGHTS 10' - 5" UNLESS OTHERWISE NOTED	
	2' X 4' A.C.T. CEILING TILE
	G.W.B. CEILING



FOURTH FLOOR RCP

STUDIO & CURVILINEAR STATION

THE STUDIO SPACE OFFERS ALTERNATIVE SEATING FOR STUDENTS

THE "FIREPIT" TIERED BENCH MAKES GROUP COMMUNICATION AND VISIBILITY EASY DUE TO ITS ROUND SHAPE AND LEVELED SEATS

THE HIVE PARTITION WALL STORES MOVABLE OTTOMAN SEATS WHICH ARE A GREAT ADDITION WHEN USING THE GLASS WHITEBOARD WALL IN THE CENTER OF THE STUDIO



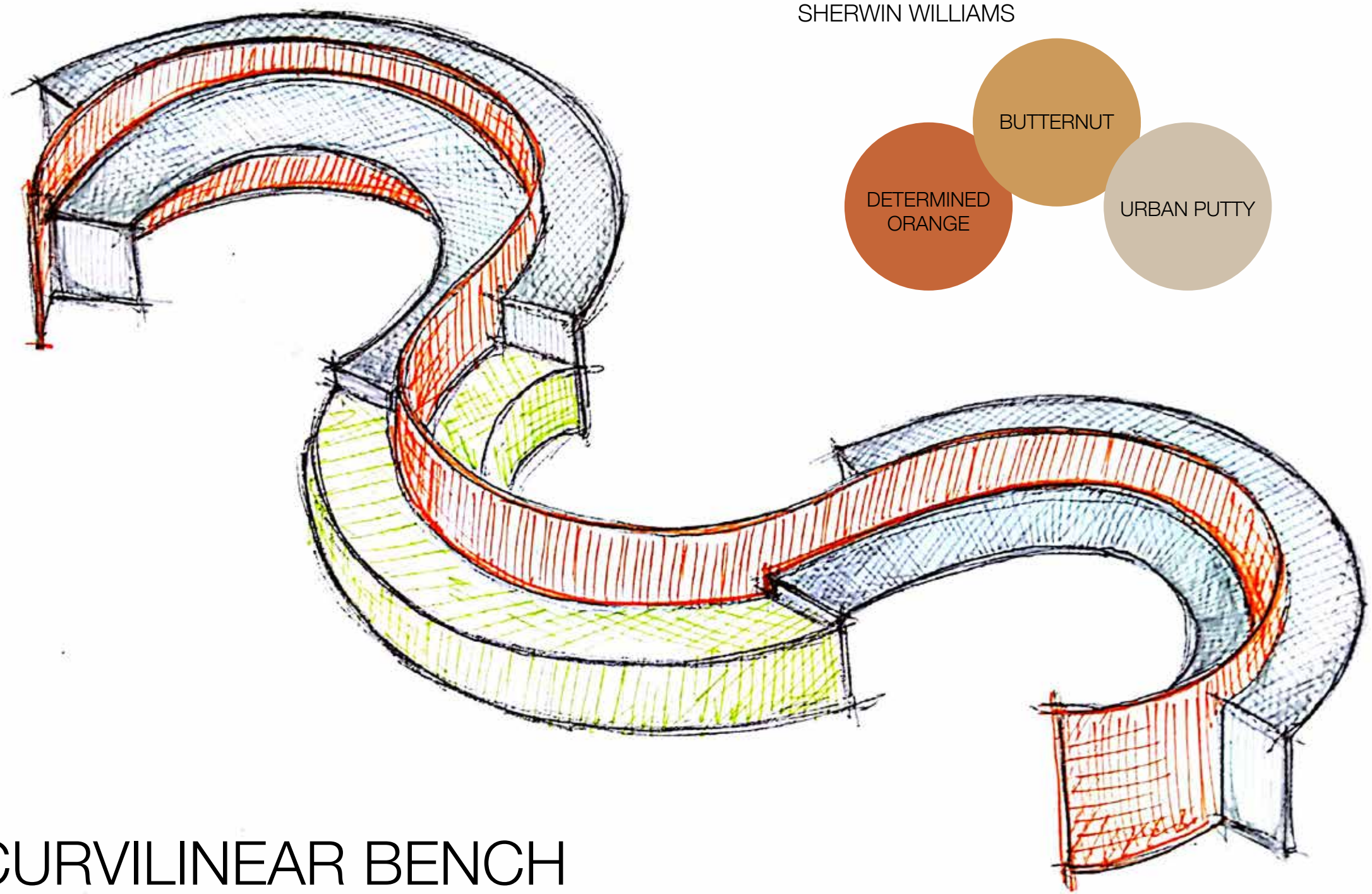
THE CUSTOM CURVILINEAR WORK STATION IN THE FOURTH FLOOR LOBBY PROVIDES STUDENTS GREAT COLLABORATIVE BREAKAWAY SPACE

THE ORANGE PARTITIONS ALLOW PRIVACY FOR STUDENTS WORKING INSIDE THE CURVED NOOKS. LAPTOP BARS AND BENCHES ACCOMODATE MORE PUBLIC COLLABORATION

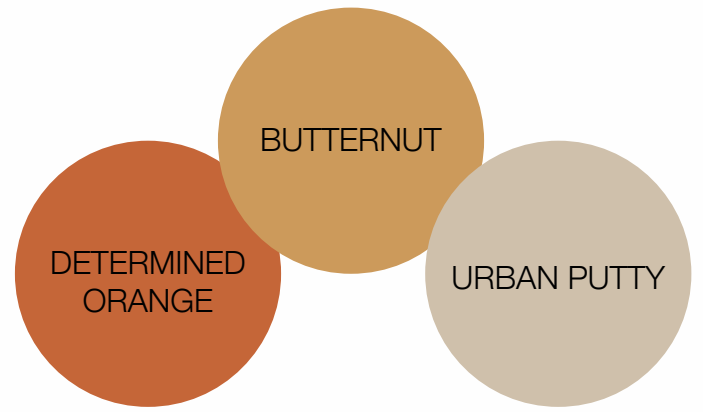
THE CURVED COUNTERTOPS ALLOW FOR EASIER COMMUNICATION FOR STUDENTS WORKING IN GROUPS AND USING ASL



RENDERS



SHERWIN WILLIAMS



HIGH TOWER NEST CHAIR
KNOLL UTRILLO FRENCH CHALK







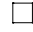




CURVILINEAR BENCH



FF&E



FURNITURE LEGEND

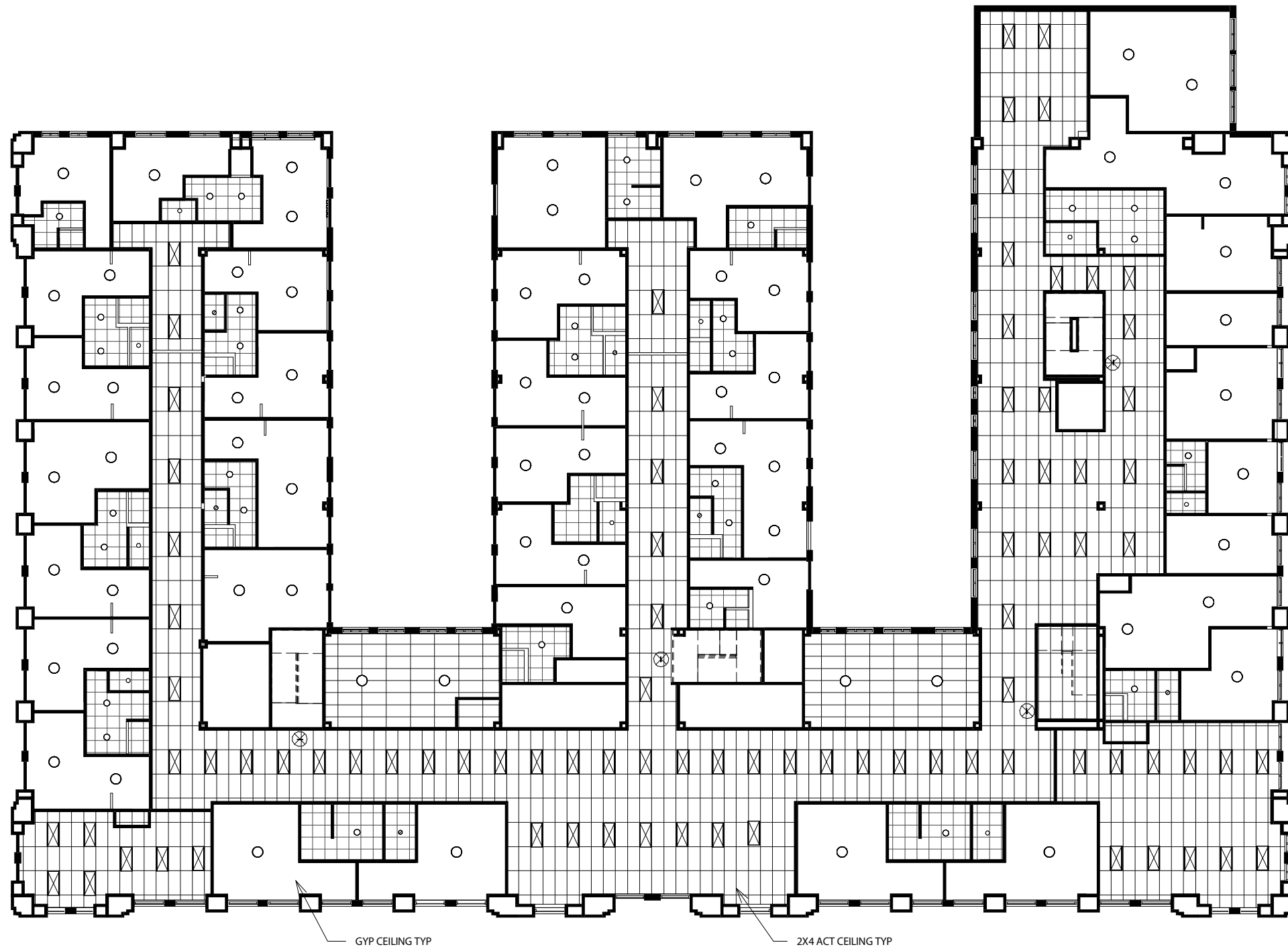
-  HERMAN MILLER AERON CHAIR
-  STEELCASE BOB TABLE
-  HERMAN MILLER ASIDE CHAIR
-  HERMAN MILLER SWOOP CHAIR
-  HERMAN MILLER SWOOP OTTOMAN
-  IKEA MALM DESK
-  HERMAN MILLER NELSON X LEG TABLE
-  CUSTOM BUNK BED
-  CUSTOM WARDROBE

① 5th Floor
1/16" = 1'-0"

STEELCASE
CIRCA



FIFTH & SIXTH FLOOR PLAN



LIGHTING LEGEND:

○	EUREKA CLOUD CEILING MOUNT LIGHT
◦	EUREKA ELROY
⊠	2X4 TROFFER
⊗	EXIT SIGN

CEILING HEIGHT 10' -0" UNLESS OTHERWISE NOTED

① 5th Floor
1" = 20'-0"



FIFTH & SIXTH FLOOR RCP



PHILLIPS HUE LIGHT TECHNOLOGY AIDS IN DEAF SPACE DESIGN BY ALERTING STUDENTS USING LIGHTING IN PLACE OF SOUND

DIFFERENT COLORS WILL SIGNIFY DIFFERENT ALERTS SUCH AS EMERGENCY, DOOR OPENING, OR DOORBELL RINGING

STUDENTS WILL NEVER HAVE TO FEEL UNINFORMED OR INSECURE ABOUT THE SECURITY OF THE RESIDENCE HALLS



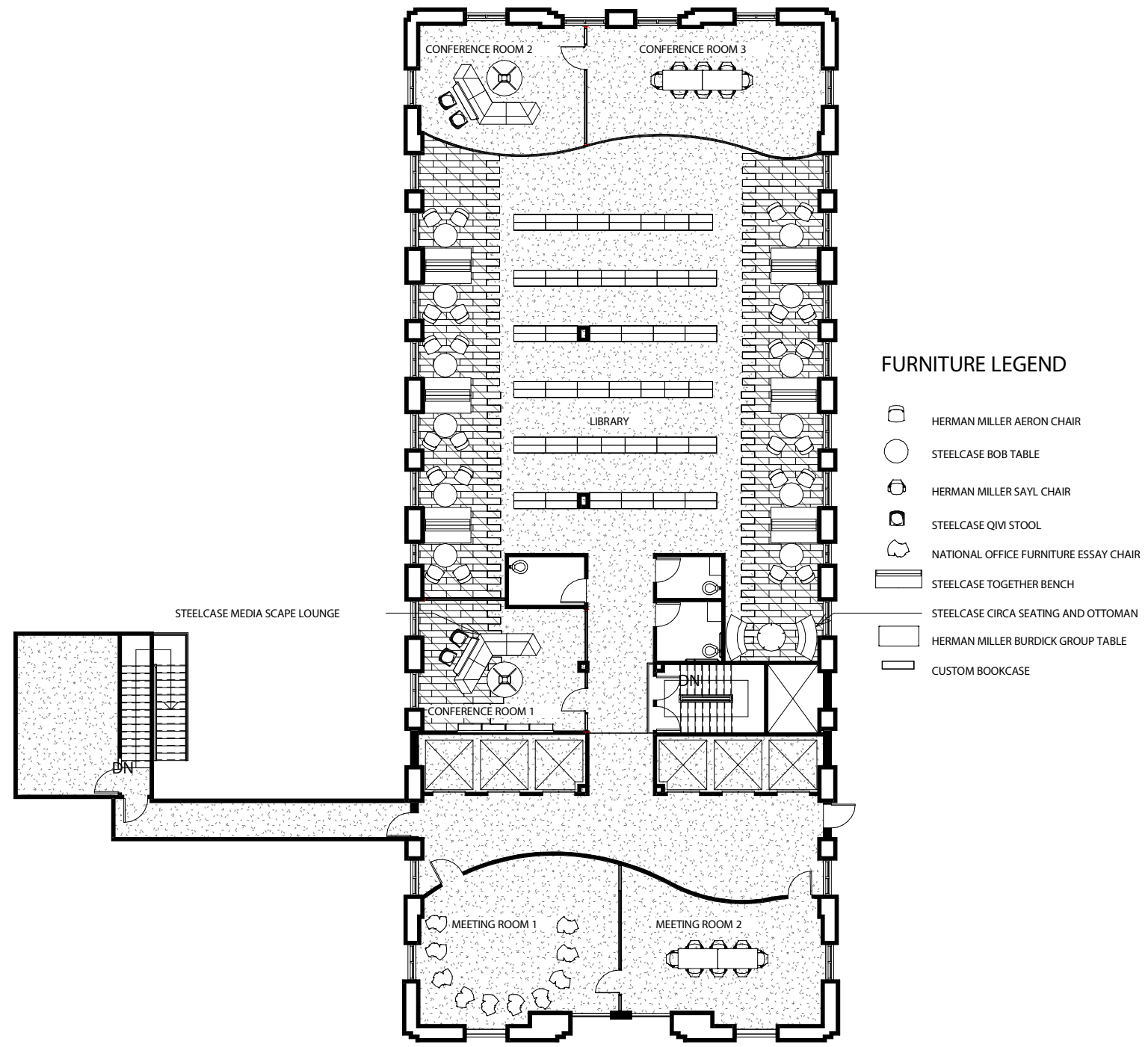
EUREKA LIGHTING CLOUD CEILING MOUNT

LIGHTING (above)
FLOORING (below)
DORM ROOM STANDARDS

INTERFACE STREETSMART CARPET TILES



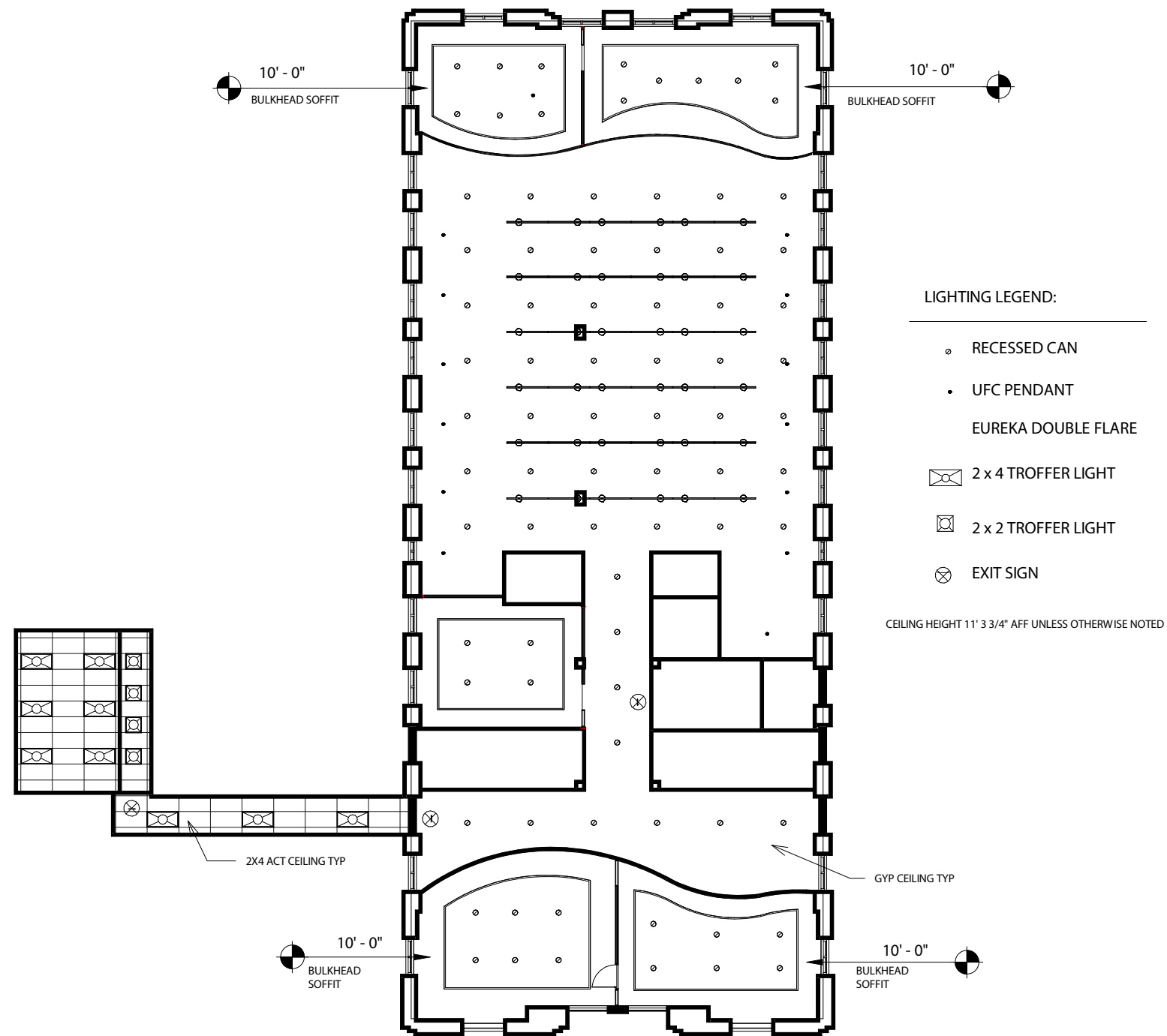
RENDER / FF&E



① 7th Floor
1/16" = 1'-0"



SEVENTH FLOOR PLAN



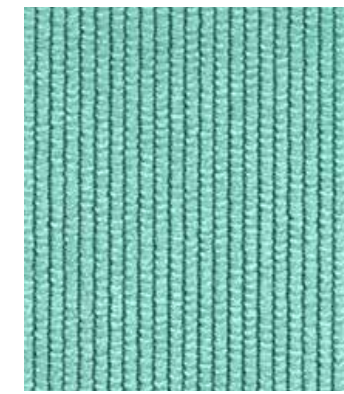
① 7th Floor
1/16" = 1'-0"



SEVENTH FLOOR RCP



STEELCASE COALESSE BINDU CHAIR

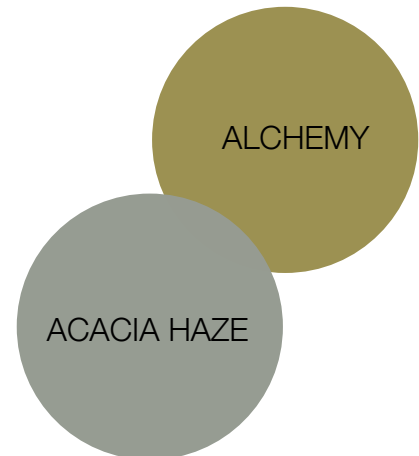


ARCHITEX ACADEMIA
BENTLEY



SHERWIN WILLIAMS

ARCCOM COMPASS
MIDNIGHT



THE LIBRARY'S SEVENTH FLOOR LOCATION WAS CHOSEN DUE TO ITS LONG/ NARROW FOOTPRINT AND ABUNDANT NATURAL LIGHT. THE LARGE WINDOWS FLANKING THE PERIMETER OF THE FLOOR HELP WITH STRESS RELIEF BECAUSE THEY PROVIDE STUDENTS A 360 DEGREE VIEW OF THE OUTDOORS. THE LIBRARY IS DESIGNED AS A QUIET SPACE, BUT FEATURES FOUR LARGE COLLABORATION ROOMS (2 on either end). THE BRIGHT LIGHT AND COLOR CHOICES MAKES THIS FEEL LIKE A LIBRARY IN THE CLOUDS.



STEELCASE REGARD BENCH




RENDER / FF&E

	ARCCOM COMPASS PAPAYA		DESIGNTEX BUNGALOW BUTTERSCOTCH		KNOLL AXIOM AZURITE		MAHARAM PERIPHERY ALABASTER
	ARCHITEX CREST PALM BEACH		DESIGNTEX OLLA DESERT		KNOLL COMPASS WINTER		MAHARAM SPATE STEAM
	ARMSTRONG CHERRY MAPLE		DESIGNTEX SEGMENT FOSSIL		KNOLL ECLAT WAVE TANGERINE		SHERWIN WILLIAMS CARGO PANTS
	CAMIRA MILL MANHATTAN		INTERFACE PIGEON BANDS		KNOLL PRAIRIE CREEK		SHERWIN WILLIAMS GRAY SHINGLE
	CAMIRA OXYGEN VIRTUE		INTERFACE PIGEON CONNECTIONS		KNOLL PRAIRIE RIVER BED		SHERWIN WILLIAMS OUTERSPACE
	DESIGNTEX STACCATO GRID INDIGO		KNOLL HALO JUPITER		KNOLL WOODLAND BLUE SPRUCE		SHERWIN WILLIAMS RHUMBA ORANGE
	MANNINGTON WINDSOR OAK ASHEN		MANNINGTON WINDSOR OAK GAINSBORO		MANNINGTON WINDSOR OAK MOLESKINE		SHERWIN WILLIAMS UNDERSEAS



SCHEME 1

	ARMSTRONG WALNUT SHELL WHITE		DESIGNTEX OLLA CACTUS		WOLF GORDON LOMBOK TWEED		SHERWIN WILLIAMS ACACIA HAZE
	ARCCOM COMPASS MIDNIGHT		DESIGNTEX OLLA BONE		KNOLL CLASSIC BOUCLE CHARTREUSE		SHERWIN WILLIAMS ALCHEMY
	ARCHITEX ACADEMIA BENTLEY		DESIGNTEX RAIL TIDEPool		KNOLL COMPASS CR LAKE		SHERWIN WILLIAMS HOMBURG GRAY
	DESIGNTEX BOCCE PLAID LATTE		DESIGNTEX SEGMENT GROTTO		KNOLL INTRIGUE ADVENTURE		SHERWIN WILLIAMS IN THE NAVY
	DESIGNTEX BUNGALOW WHEAT		SMOOTH STEEL GRAY STRAND BAMBOO		KNOLL TIGHT ROPE SPEARMINT		SHERWIN WILLIAMS SURF GREEN
	DESIGNTEX KELLY JADE		KNOLL AXIOM STEM		MAHARAM PERIPHERY AMPARO		SHERWIN WILLIAMS TUPELO TREE
	WILSONART LAMINATE BOARDWALK OAK		INTERFACE STREETSMART		INTERFACE STREETSMART		



SCHEME 2



DESIGNTEX
BUNGALOW SAGE



GO FLOORS ISLAY
FOG



KNOLL PRAIRIE
RATTLESNAKE



SHERWIN WILLIAMS
BUTTERNUT



ARCCOM COMPASS
MOSS



DESIGNTEX TURN
MUSTARD



KNOLL PRAIRIE
CACTUS



SHERWIN WILLIAMS
BLUSTERY SKY



ARMSTRONG
HICKORY WESTERN
MOUNTAIN



HB MONACO WHITE
OAK



KNOLL
TIGHTROPE
FIREFLY



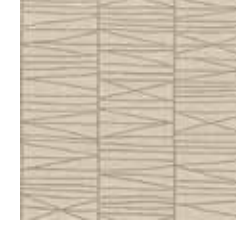
SHERWIN WILLIAMS
CORNWALL GRAY



DESIGNTEX RAIL
AUTUMN



KNOLL AXIOM
BONDI BLUE



KNOLL
TIGHTROPE
SPARROW



SHERWIN WILLIAMS
DETERMINED
ORANGE



DESIGNTEX
STACCATO GRID
HONEY



KNOLL AXIOM
IGNITE



KNOLL UTRILLO
FRENCH CHALK



SHERWIN WILLIAMS
LEMON VERBENA



DESIGNTEX TURN
LAKE



KNOLL INTRIGUE
ENCHANT



LANARK
WALLCOVERING
ELLIPSE



SHERWIN WILLIAMS
URBAN PUTTY



SCHEME 3



THANK YOU!