



INDE 401
Deaf Space : Urban University
Design Team:
Jennets Tho
Jordanaé Smith
Josephine Yu
Alexandra Bravo

1 Table of Contents



Table of Contents

Meet the Team ...2
Research and Interviews...3
Concept...7

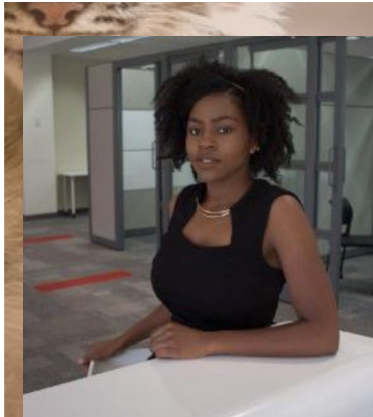
LYNX...8
Our Design Process...9

Social Area...12
Educational...17
Residential...21
Thank You...25

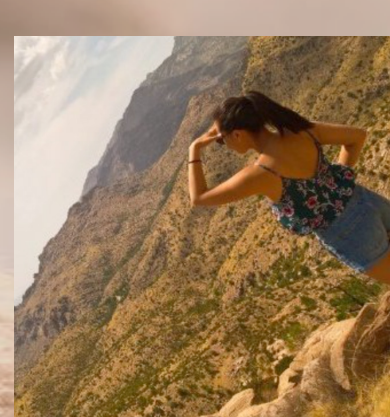
2 The Design Team



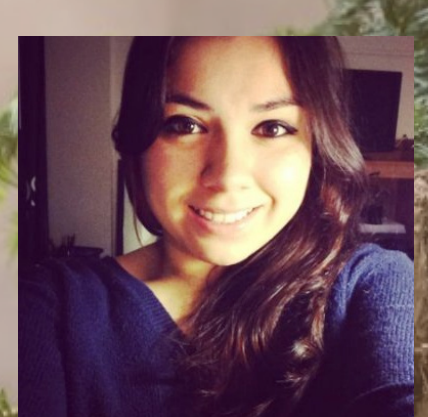
Jennets Tho



Jordanaé Smith



Josephine Yu



Alexandra Bravo

3 Research

DeafSpace

[an approach to architecture and design that is primarily informed by the unique ways in which Deaf people perceive and inhabit space]

5 major touch points between deaf experiences and the built environment:

1. Sensory Reach

To use senses to read the environment.

2. Space and Proximity

To maintain clear visual communication individuals stand at a distance.

3. Mobility and Proximity

To provide walking together in conversation signers, maintain a wide distance for clear visual communication.

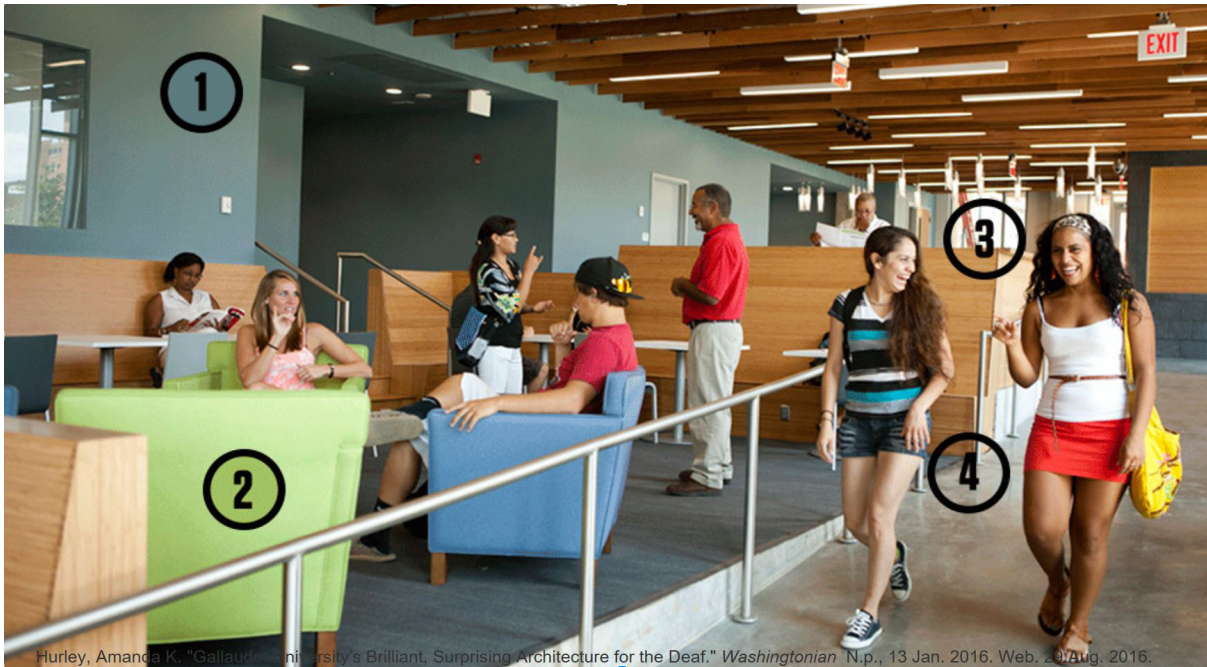
4. Light and Color

To use lighting conditions and certain colors to make easy on everyone's eyes.

5. Acoustics

To provide acoustically quiet spaces for Deaf individuals with many different kinds and hearing levels.

4 Research



Hurley, Amanda K. "Gallaudet University's Brilliant, Surprising Architecture for the Deaf." *Washingtonian*. N.p., 13 Jan. 2016. Web. 20 Aug. 2016.

- 1 Blue wall color contrasts with flesh tones, making gestures easy to see
- 2 Furniture in dorm common space is easily rearranged for student groups to see one another
- 3 Pedestal surface provides a place to put down bags and hand-held items, freeing a speaker to sign
- 4 Sloping walkway replaces stairs, which tend to draw the eye away from a signing companion.

5 Research

Interviews

Debbye Byrne

NTID Student Life Team (SLT) Director
Deaf and ASL

Debbye considered Deaf individuals, Deaf blind individuals, Deaf disability individuals, and individuals of Deaf color.

Debbye talked about how students' experiences were all different within the designs of the Student Development Center. She also stressed the importance of diversity and good design should be a design that works for all.

Christopher Knigga

Director of NTID Facilities Services and Sustainability
Deaf, Cochlear Implant and ASL

Chris mentioned the needs to develop deaf friendly designs and materials. Chris talked about an improvement the classroom experience for deaf or hard of hearing students.



Dennis Baszynki
Senior Technical Coordinator
Deaf and ASL

When a building is for the general public (not deaf or hard of hearing specific) we don't do anything different for the project since the bare necessities are already required by code. Those would consist of ample lighting, exit signage, fire alarm strobes, safe and clear passage out of the building. Buildings nowadays are not considered deaf friendly. The communication devices within buildings are focused on sound. For instance, to gain access to an apartment of a friend, one would have to go to the lobby of a building and search the directory for the name. Then press the buzzer and the friend in the apartment will talk through a two way communication device and then the individual living there will release the lobby door so the friend can gain access. How is a deaf person supposed to communicate on that? Announcements in buildings are done via some sound system, a deaf person would never get the message.

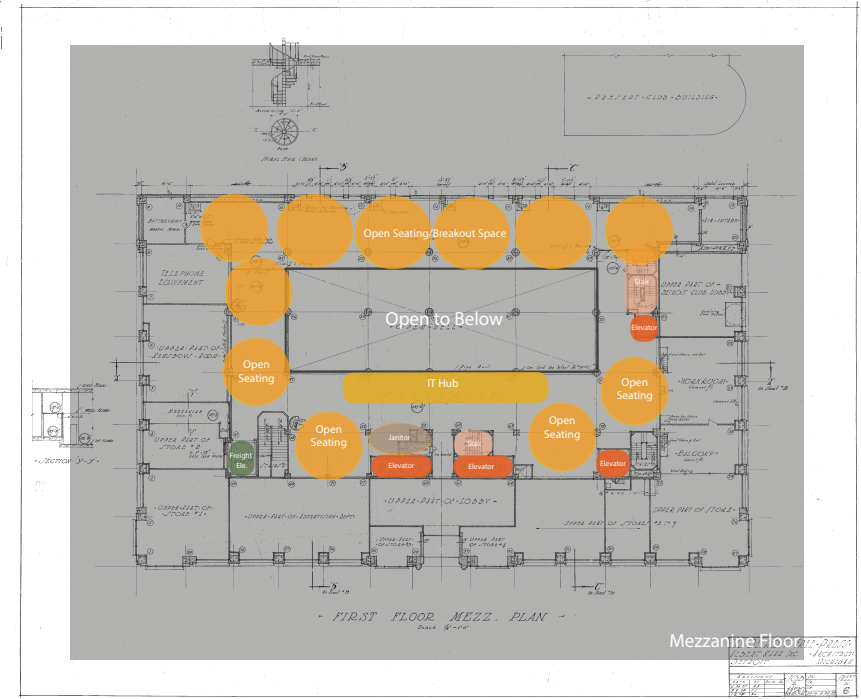
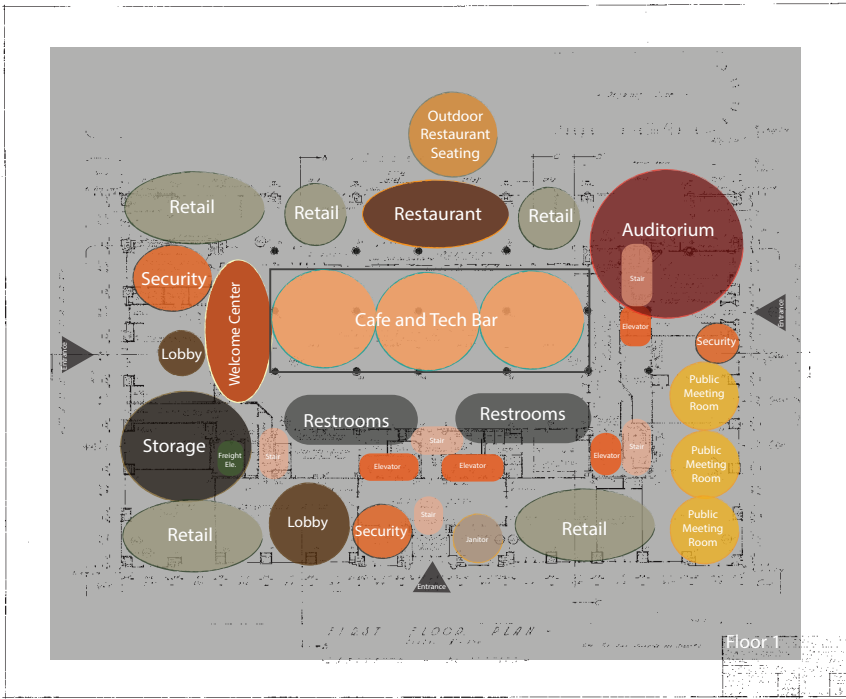
7 Concept

NTID Midwest is inspired by the boundless feline. The feline is an instinctual being, with strong environmental consciousness and natural adaptation. The embodiment of the feline is imparted through the spatial environment. The fluid nature of the animal will be translated into organic, minimalist elements within the design. Felines, like human beings are diverse creatures who emanate from various parts of the world. By coming together here at NTID Midwest, students of diverse backgrounds and of different abilities are able to foster communal pride. In this environment, they will feel connected, safe, aware and empowered to strive.

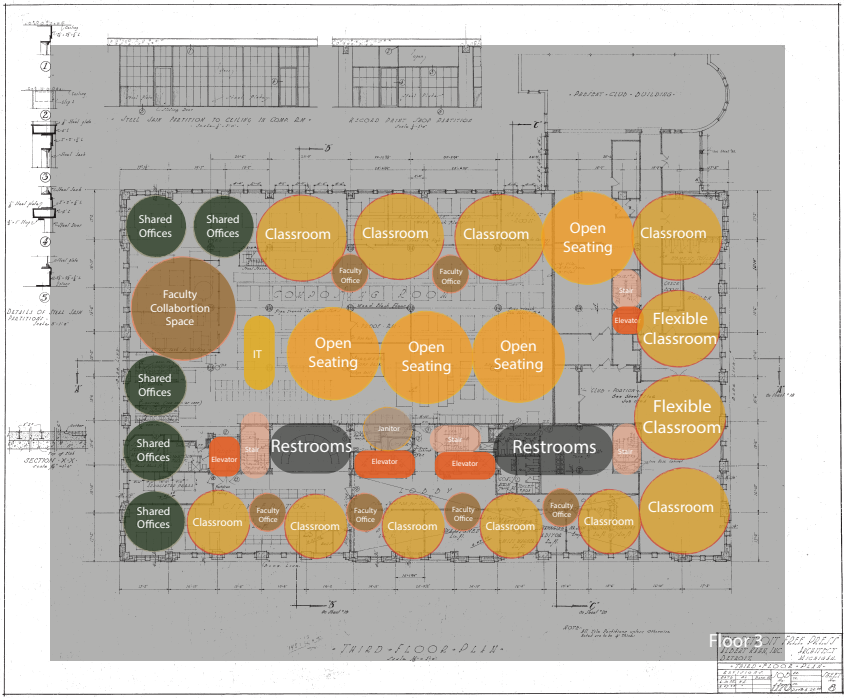
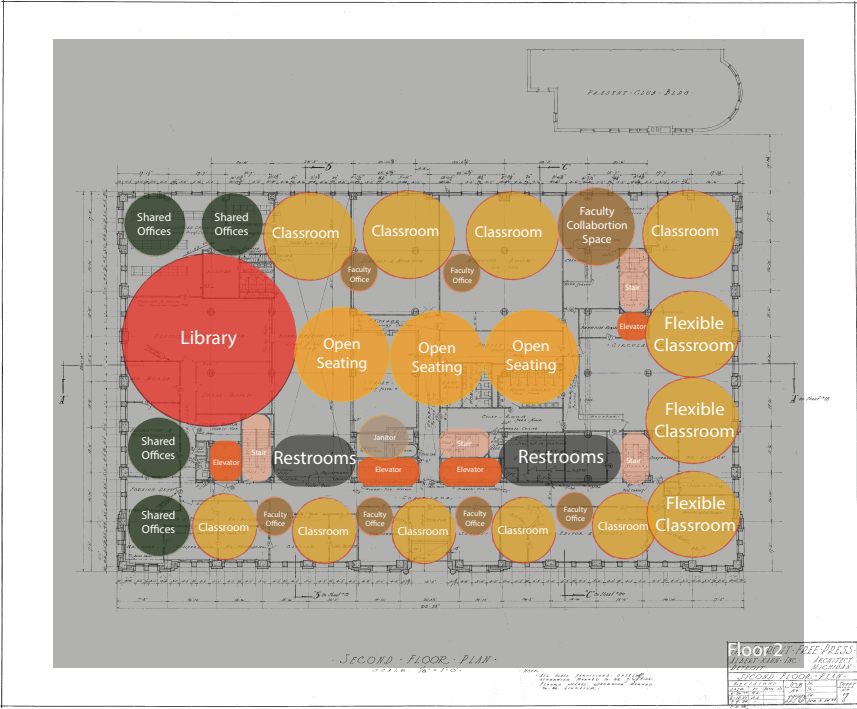




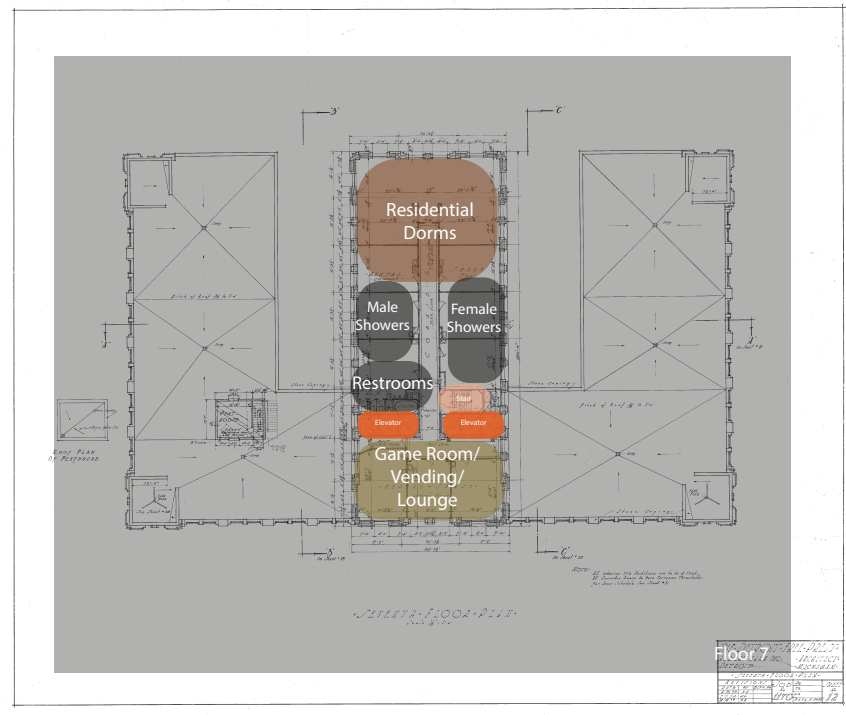
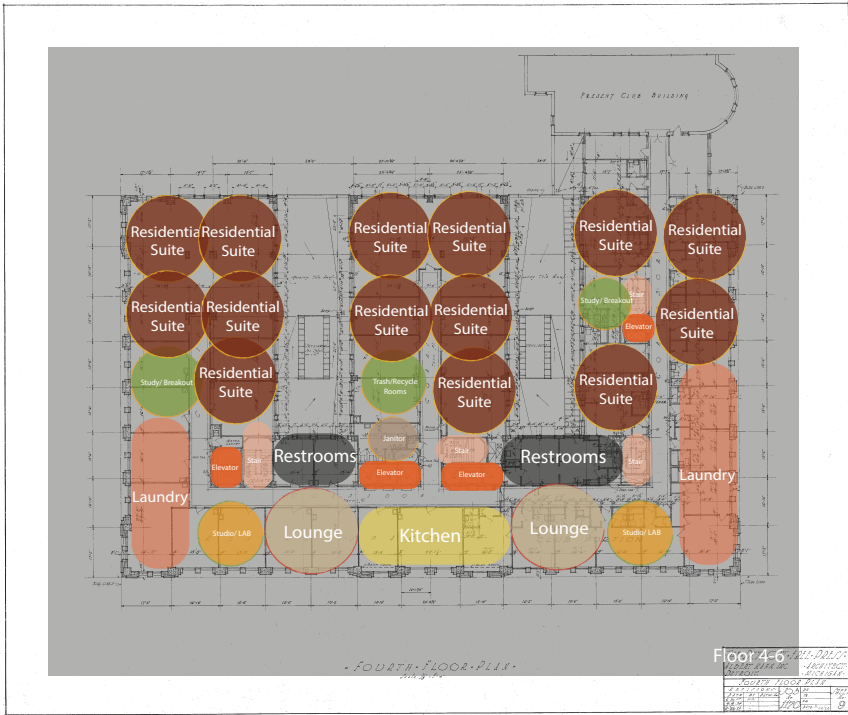
9 Design Process



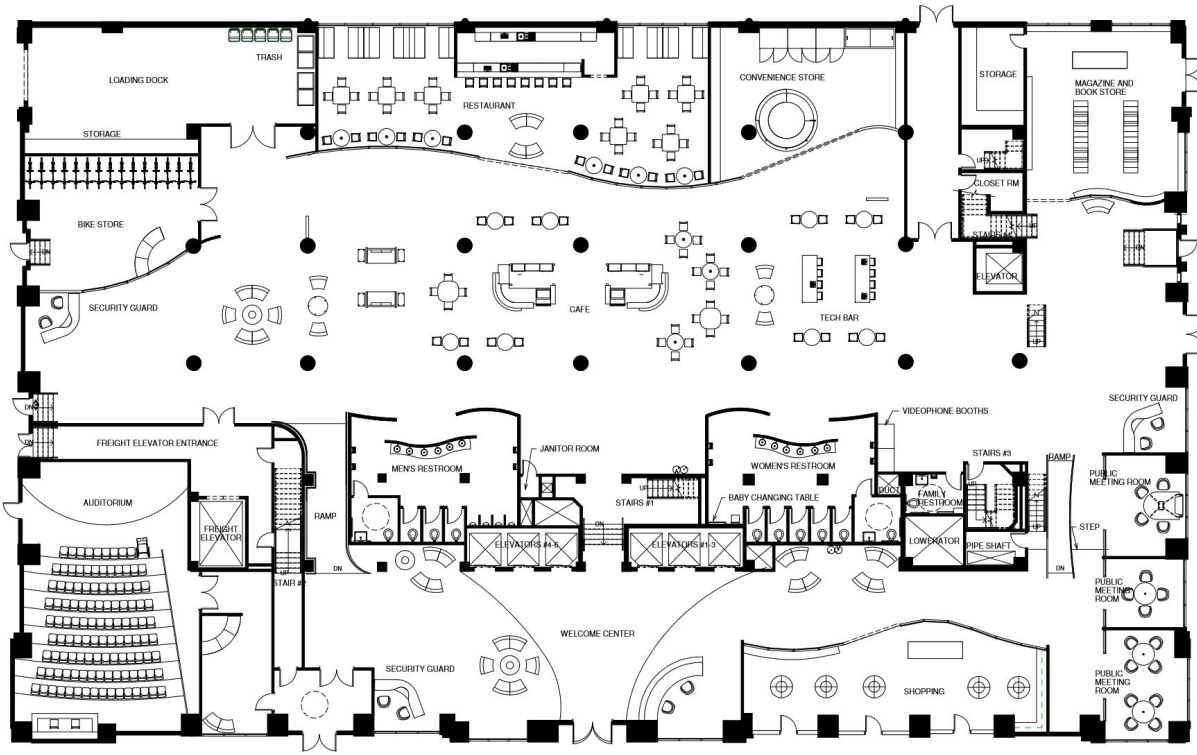
10 Design Process



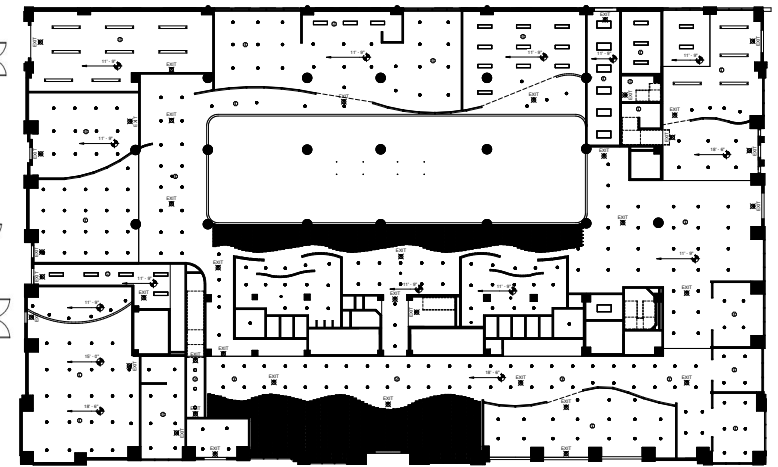
11 Design Process



12 Social Area



Floor 1



CEILING TYPE LEGEND	
	GYPSUM WALL BOARD / DRYWALL CEILING
	2X2 ACT CEILING
	ARMSTRONG TECHZONE OPTIMA 6X48 CEILING
	ARMSTRONG WOODWORKS GRILLES

LIGHTING LEGEND	
	PHILIPS CORELINE TRUNKING 12' LIGHT
	PHILIPS CORELINE TRUNKING 6' LIGHT
	6" LED RECESSED CAN LIGHT
	8" LED RECESSED CAN LIGHT
	LED RECESSED PINNACLE 4" LIGHT
	2X2 FLOURESCENT TROFFER LIGHT
	LED ILLUMINATED EXIT SIGN
	SMOKE DETECTOR
	EUREKA CYCLE 152 LIGHT
	LED SURFACAE 2X2 PINNACLE ADEO LIGHT
	SQUARE RETURN REGISTER
	LED FLOOR LIGHTS
	CEILING LIGHT, LINEAR BOX 1X4
	CEILING LIGHT, LINEAR BOX 2X4
	SURFACE MOUNT HEMISPHERE

13 Social Area



Reception

- 1 Circular seating makes signed conversation easy
- 2 Sloping walkway replaces stairs, which tend to draw the eye away from a signing companion.
- 3 Green wall color contrasts with flesh tones, making gestures easy to see



Sherwin Williams
Saguaro



Mayer Fabrics
Fanfare Chateau



Mannington
Oakford Strip-Natural



Sherwin Williams
Rookwood Amber



Designtex
Tombolo Sepia



Lumicor
Costal-Natural

14 Social Area



Café and Center Lobby

Primary Furniture Selections

1 Open hallways let students see and communicate between levels

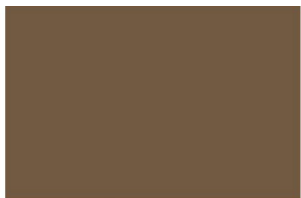
Coalesse Circa Lounge Sofa

2 Glass walls fill the lobby with natural light which spares eyes of students who depend on visual communication



Table

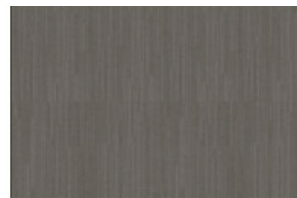
3 Curving walkways avoid sharp corners for signers engrossed in conversation



Sherwin Williams
Coconut Husk

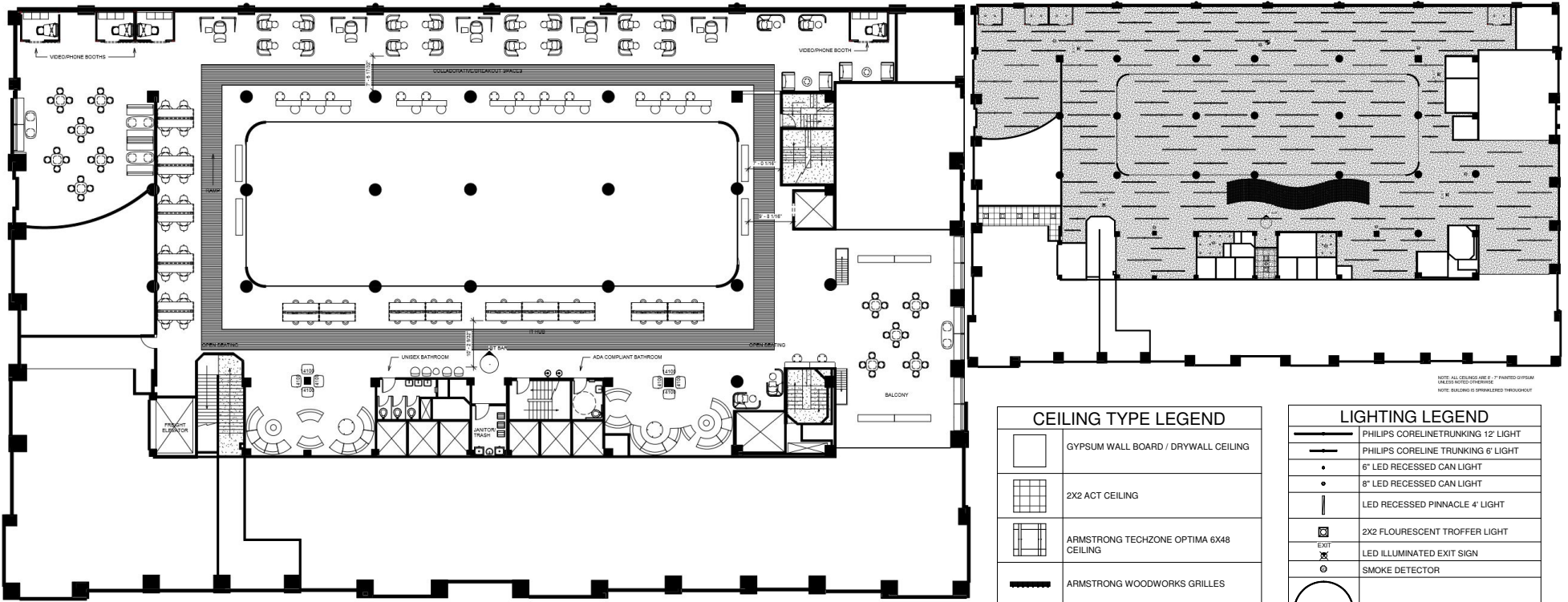


Designtex
Tombolo Bark



Mannington
Raffia Carpet

15 Social Area



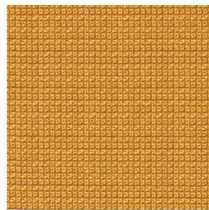
Mezzanine



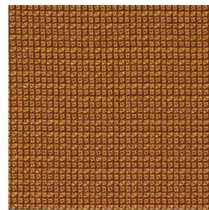
Designtex
Annex Cognac



Designtex
Annex Cream



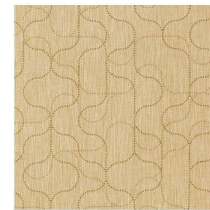
Maharam
Metric Pollen



Maharam
Metric Caramel



Bernhardt
Sprint Marigold



Momentum
Sidestep Linen

CEILING TYPE LEGEND	
	GYPSUM WALL BOARD / DRYWALL CEILING
	2X2 ACT CEILING
	ARMSTRONG TECHZONE OPTIMA 6X48 CEILING
	ARMSTRONG WOODWORKS GRILLES

LIGHTING LEGEND	
	PHILIPS CORELINE TRUNKING 12' LIGHT
	PHILIPS CORELINE TRUNKING 6' LIGHT
	6" LED RECESSED CAN LIGHT
	8" LED RECESSED CAN LIGHT
	LED RECESSED PINNACLE 4' LIGHT
	2X2 FLOURESCENT TROFFER LIGHT
	LED ILLUMINATED EXIT SIGN
	SMOKE DETECTOR
	EUREKA CYCLE 152 LIGHT
	LED SURFACE 2X2 PINNACLE ADEO LIGHT
	SQUARE RETURN REGISTER
	LED FLOOR LIGHTS
	CEILING LIGHT, LINEAR BOX 1X4
	CEILING LIGHT, LINEAR BOX 2X4
	SURFACE MOUNT HEMISPHERE

16 Social Area



Mezzanine Breakout Space Primary Furniture Selections

1 Open hallways let students see and communicate between levels

2 Furniture in common space is easily rearranged for student groups to see one another

3 Clear visual distinction for circulation path

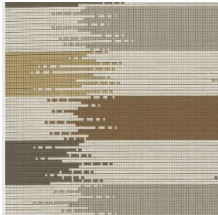
Steelcase
Hosu



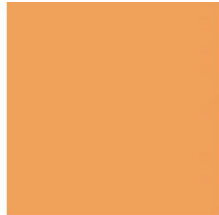
Brody



Tech Bar



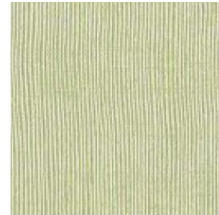
Designtex
Tetris Stonehenge



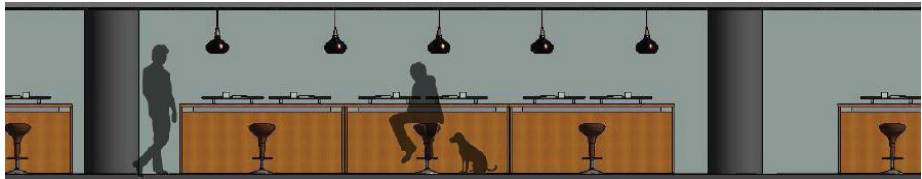
3form
Chroma Marmalade



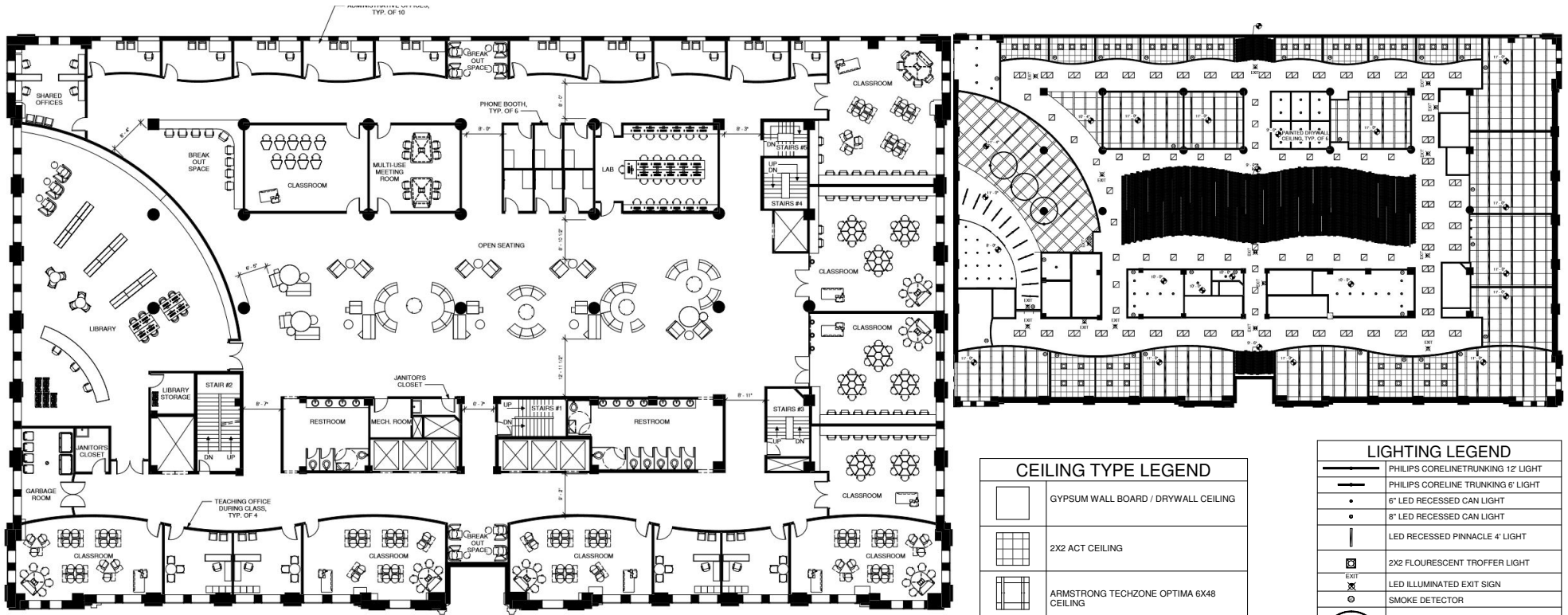
HBF Textiles
Free Way Stone



Designtex
Shimmering Tide Pebble

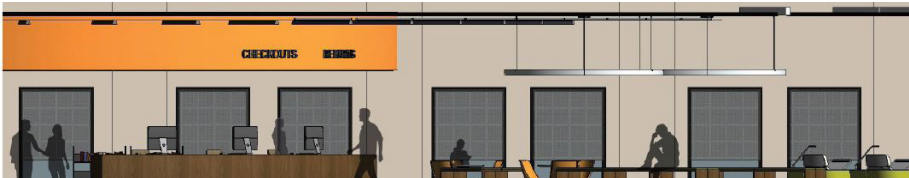


17 Education



Floor 2

Library



CEILING TYPE LEGEND	
	GYPSUM WALL BOARD / DRYWALL CEILING
	2X2 ACT CEILING
	ARMSTRONG TECHZONE OPTIMA 6X48 CEILING
	ARMSTRONG WOODWORKS GRILLES

LIGHTING LEGEND	
	PHILIPS CORELINE TRUNKING 12' LIGHT
	PHILIPS CORELINE TRUNKING 6' LIGHT
	6" LED RECESSED CAN LIGHT
	8" LED RECESSED CAN LIGHT
	LED RECESSED PINNACLE 4" LIGHT
	2X2 FLOURESCENT TROFFER LIGHT
	LED ILLUMINATED EXIT SIGN
	SMOKE DETECTOR
	EUREKA CYCLE 152 LIGHT
	LED SURFACAE 2X2 PINNACLE ADEO LIGHT
	SQUARE RETURN REGISTER
	LED FLOOR LIGHTS
	CEILING LIGHT, LINEAR BOX 1X4
	CEILING LIGHT, LINEAR BOX 2X4
	SURFACE MOUNT HEMISPHERE

18 Education



Campus Library

1 Book Shelves are lowered to increase visual access | top of bookshelves are cushioned for momentary seating

2 Furniture in common space is easily rearranged for student groups to see one another

3 Clear visual distinction for circulation path

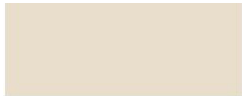
Primary Furniture Selections

Source

Artifakt



Martini



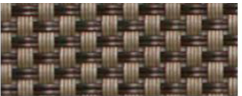
Sherwin Williams Biscuit



Sherwin Williams Toque White



Wolf Gordon Relay Dark Beige



The Shade Store 7 Percent Metallic Bronze



Shaw Contract Rotate Tile



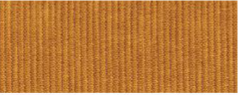
Shaw Contract Expose Tile Lath



Sherwin Williams Saguaro



Sherwin Williams Forceful Orange



Designtex Signing in the Rain Curry



Designtex Annex Juniper

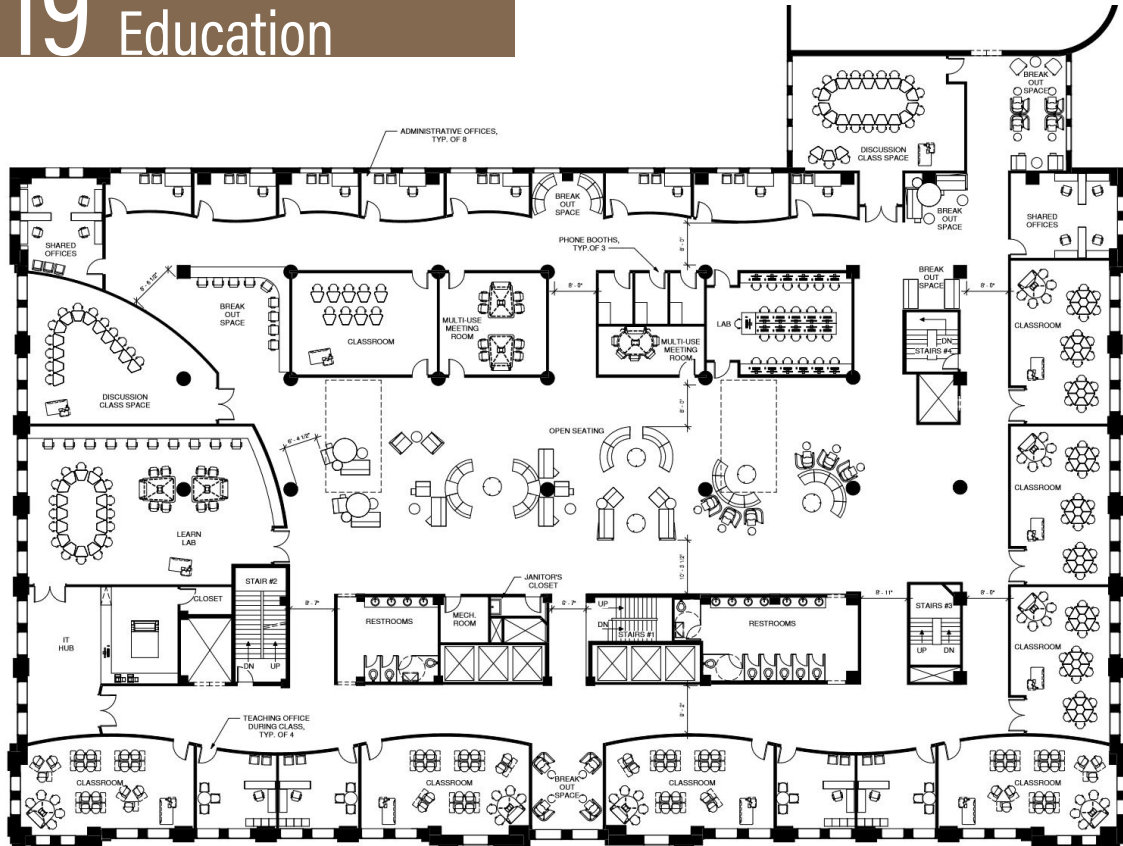


Wolf Gordon Walnut Australian

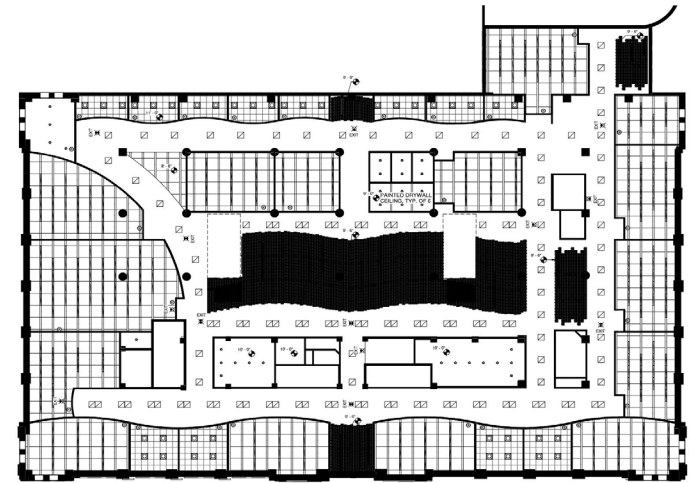


Designtex Pleat Clementine

19 Education



Floor 3



CEILING TYPE LEGEND	
	GYPSUM WALL BOARD / DRYWALL CEILING
	2X2 ACT CEILING
	ARMSTRONG TECHZONE OPTIMA 6X48 CEILING
	ARMSTRONG WOODWORKS GRILLES

LIGHTING LEGEND	
	PHILIPS CORELINE TRUNKING 12' LIGHT
	PHILIPS CORELINE TRUNKING 6' LIGHT
	6\"/>
	8\"/>
	LED RECESSED PINNACLE 4' LIGHT
	2X2 FLOURESCENT TROFFER LIGHT
	LED ILLUMINATED EXIT SIGN
	SMOKE DETECTOR
	EUREKA CYCLE 152 LIGHT
	LED SURFACAE 2X2 PINNACLE ADEO LIGHT
	SQUARE RETURN REGISTER
	LED FLOOR LIGHTS
	CEILING LIGHT, LINEAR BOX 1X4
	CEILING LIGHT, LINEAR BOX 2X4
	SURFACE MOUNT HEMISPHERE

20 Education



Classroom

Primary Furniture Selections

1 Mirror on wall of laptop bar to aid in incidental learning

2 Furniture in common space is easily rearranged for student groups to see one another

3 Wall has writable Surface

Steelcase Node



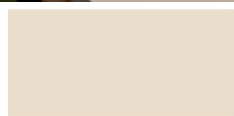
SmithSystems Collaboration Desk



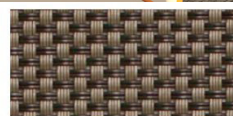
Trespa



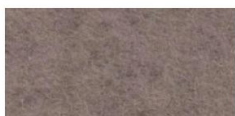
3form Chroma Moss



Sherwin Williams Biscuit



The Shade Store 7 Percent Metallic Bronze



Fitzfelt Taupe Acoustic Panel



Mannington Brim Current



Wolf Gordon Relay Orange

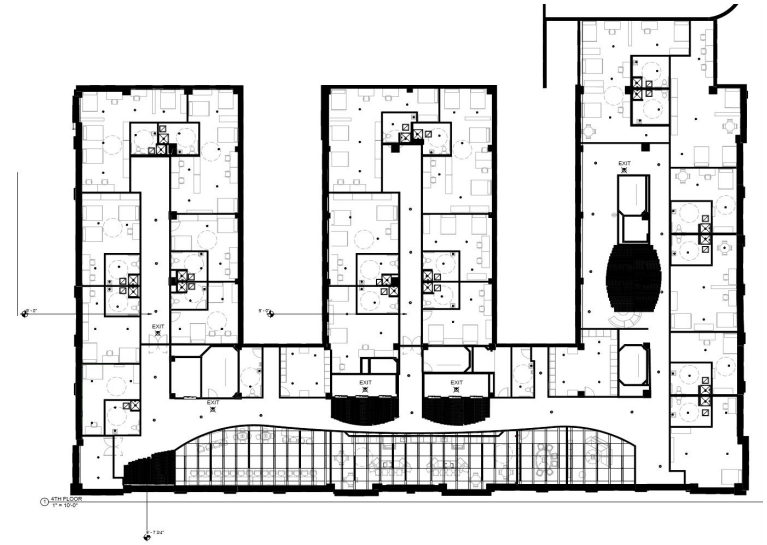
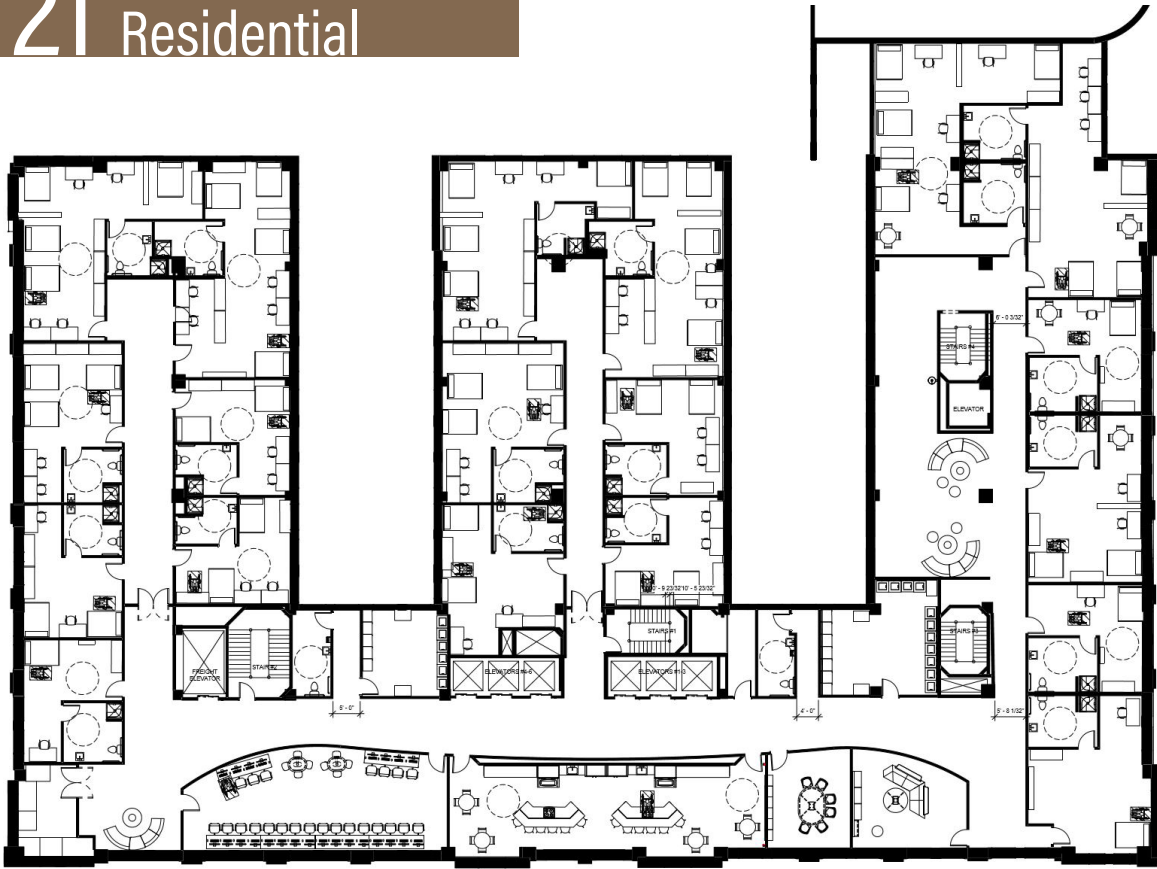


Steelcase Wasabi



Shaw Contract Duotone Carpet

21 Residential



Floors 4-6



South Cypress
Smoke Matte Subway Tile



Mayer Fabrics
Duraweave Oatmeal

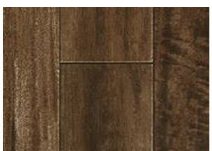


Designtex
Shimmering Tide Copper

CEILING TYPE LEGEND	
	GYPSUM WALL BOARD / DRYWALL CEILING
	2X2 ACT CEILING
	ARMSTRONG TECHZONE OPTIMA 6X48 CEILING
	ARMSTRONG WOODWORKS GRILLES

LIGHTING LEGEND	
	PHILIPS CORELINE TRUNKING 12' LIGHT
	PHILIPS CORELINE TRUNKING 6' LIGHT
	6" LED RECESSED CAN LIGHT
	8" LED RECESSED CAN LIGHT
	LED RECESSED PINNACLE 4" LIGHT
	2X2 FLOURESCENT TROFFER LIGHT
	LED ILLUMINATED EXIT SIGN
	SMOKE DETECTOR
	EUREKA CYCLE 152 LIGHT
	LED SURFACAE 2X2 PINNACLE ADEO LIGHT
	SQUARE RETURN REGISTER
	LED FLOOR LIGHTS
	CEILING LIGHT, LINEAR BOX 1X4
	CEILING LIGHT, LINEAR BOX 2X4
	SURFACE MOUNT HEMISPHERE

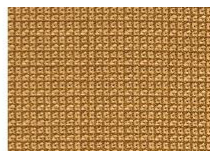
22 Residential



Mannington
Walkway Pank-Brazilian Cherry



Maharam
Grade Clay



Maharam
Metric Tupelo



Carnegie
Moire Stripe Couture-Panels



Mayer Fabrics
Fanfare Chateau



Dorm

1 Easily rearrangeable | Stackable furniture

2 Wardrobe has Adjustable and ADA Accessible Heights

3 Adjustable Heights Accommodate people in wheel chairs

Primary Furniture Selections

Keilhauer
Trua



Cahoots



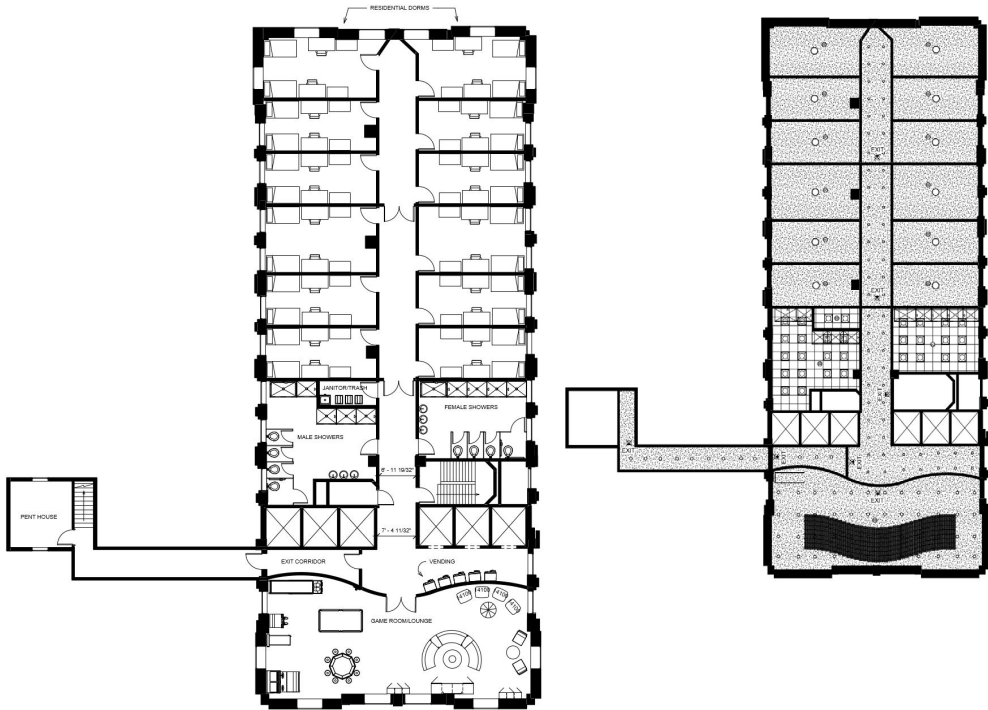
23 Residential



Kitchen

- 1 ADA Accessible Heights
- 2 Clear visual distinction for circulation path

24 Residential



CEILING TYPE LEGEND	
	GYPSUM WALL BOARD / DRYWALL CEILING
	2X2 ACT CEILING
	ARMSTRONG TECHZONE OPTIMA 6X48 CEILING
	ARMSTRONG WOODWORKS GRILLES

LIGHTING LEGEND	
	PHILIPS CORELINE TRUNKING 12' LIGHT
	PHILIPS CORELINE TRUNKING 6' LIGHT
	6" LED RECESSED CAN LIGHT
	8" LED RECESSED CAN LIGHT
	LED RECESSED PINNACLE 4' LIGHT
	2X2 FLOURESCENT TROFFER LIGHT
	LED ILLUMINATED EXIT SIGN
	SMOKE DETECTOR
	EUREKA CYCLE 152 LIGHT
	LED SURFACE 2X2 PINNACLE ADEO LIGHT
	SQUARE RETURN REGISTER
	LED FLOOR LIGHTS
	CEILING LIGHT, LINEAR BOX 1X4
	CEILING LIGHT, LINEAR BOX 2X4
	SURFACE MOUNT HEMISPHERE

Floor 7



25 Thank You

