

MP

MILLENNIUM

POINT

MILLENNIUM POINT





**MULTI-STORY/MULTI-PURPOSE
DESIGN STUDIO**

FALL 2020

A PROJECT BY:

THOMAS RICHTER | SENIOR

RIT INTERIOR DESIGN

JONATHAN SUTTON | SENIOR

RIT INTERIOR DESIGN

STUDIO INSTRUCTOR:

HEIDI SCHLEGEL, NCIDQ | PROFESSOR

RIT INTERIOR DESIGN

JOINT DEVELOPMENT TEAM:

MAURO CRINGOLI, AIA | ARCHITECT

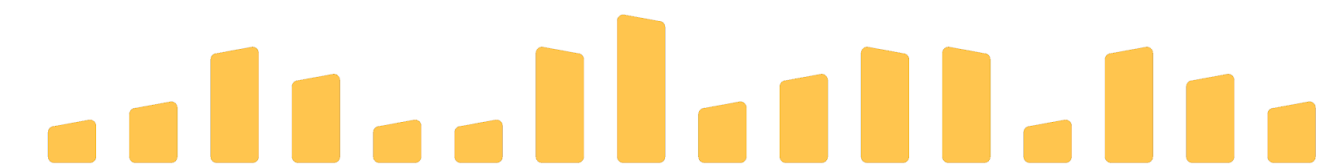
FORTIFIED

PATRICK DUTTON | DEVELOPER

DUTTON & COMPANY

LUKE DUTTON | GENERAL CONTRACTOR

DUTTON PROPERTIES



FORTIFIED

RIT | College of Art and Design
Interior Design

EXISTING CONDITION & SITE

TWO-STORY BUILDING WITH BASEMENT

- BUILT OF CMU AND CONCRETE
- BUILT IN THE 1940'S
- BUILDING'S RECENT USE IS UNKNOWN

ACCESS:

- A LARGE SURFACE LOT ON DIVISION ST.
- SHARED PARKING FOR SEVERAL DUTTON/FORTIFIED PROJECTS IN THE AREA WITH 80+ SPACES
- PARKING GARAGE IS AVAILABLE ACROSS THE STREET FROM THE BUILDING
- A 9-MINUTE WALK TO THE ROCHESTER BUS STATION
- A 9-MINUTE WALK TO THE LOUISE M SLAUGHTER ROCHESTER STATION

INFRASTRUCTURE

- WELL FIELD FOR GEOTHERMAL HEATING





CONCEPT STATEMENT

MILLENNIUM POINT REPRESENTS THE FUTURE OF ROCHESTER. IT IS A SHIFT FROM OLD TO NEW, AS IT STRIVES TO INVEST IN THE FUTURE COMMUNITY. THIS WILL BE REPRESENTED IN THE PHYSICAL TRANSITION OF THE BUILDING AS IT AIMS TO RENOVATE AND MAINTAIN THE ORIGINAL INTERNATIONAL STYLE STRUCTURE, BUT THEN ADD ADDITIONAL FLOORS IN A MODERN INDUSTRIAL STYLE. THE CENTER POINT OF THIS BUILDING DEMONSTRATES THE MATERIAL TRANSITION WHICH REPRESENTS THE CONNECTION BETWEEN THE PAST AND FUTURE OF ROCHESTER.

DESIGN STATEMENT

MILLENNIUM POINT IS A CENTER OF ECONOMIC AND EDUCATIONAL REJUVENATION FOR ROCHESTER. GIVEN THAT THE CITY IS IN A REVITALIZATION PERIOD, MILLENNIUM POINT STRIVES TO INVEST IN THE FUTURE COMMUNITY. IT AIMS TO PROVIDE EDUCATIONAL ADVANCEMENT FOR INNER-CITY CHILDREN, GENERATE FREE CAREER OPPORTUNITIES FOR CITIZENS IN ROCHESTER, AND CREATE AFFORDABLE HOUSING OPTIONS FOR LOW-INCOME FAMILIES. MILLENNIUM POINT WILL ASSIST IN RESURGING THE SOCIAL HUB IN MIDTOWN DISTRICT, WITH THE GOAL TO UPLIFT AND RECONNECT THE ROCHESTER COMMUNITY.



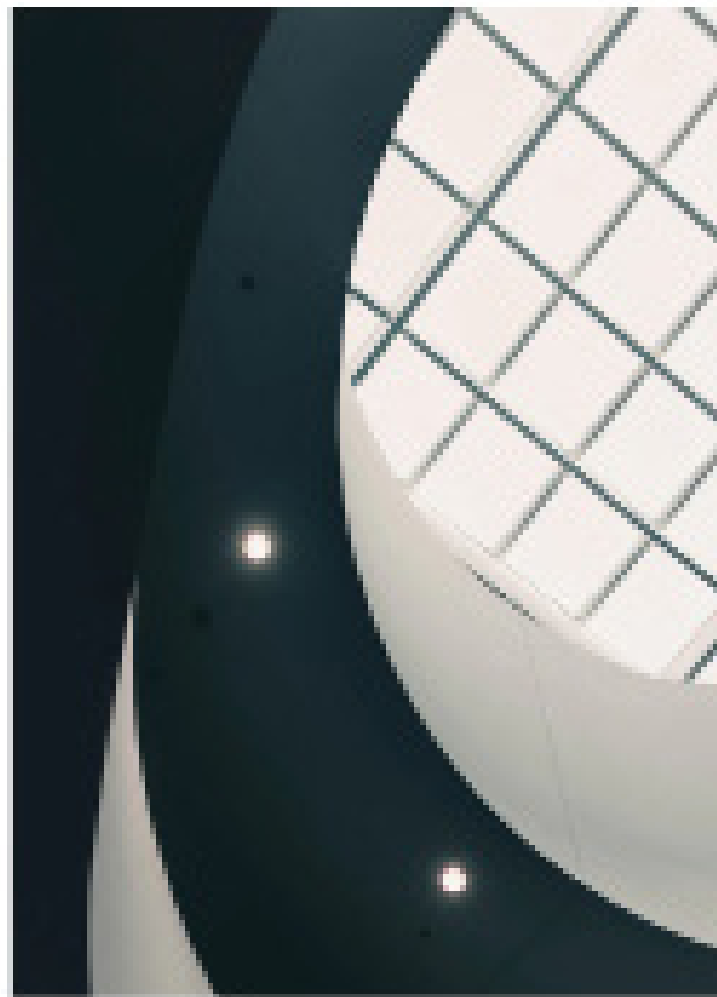
USER BOARD



MP

04

MOOD BOARD





BUILDING FACADE

6TH FLOOR

ODD FELLOWS

MID-RANGE RESTAURANT AND BAR

4TH/5TH FLOORS

UNIVERSALLY DESIGNED LOW-INCOME
HOUSING

2ND/3RD FLOORS

THE CENTER FOR ACADEMIC ADVANCE-
MENT AND CAREER PLANNING

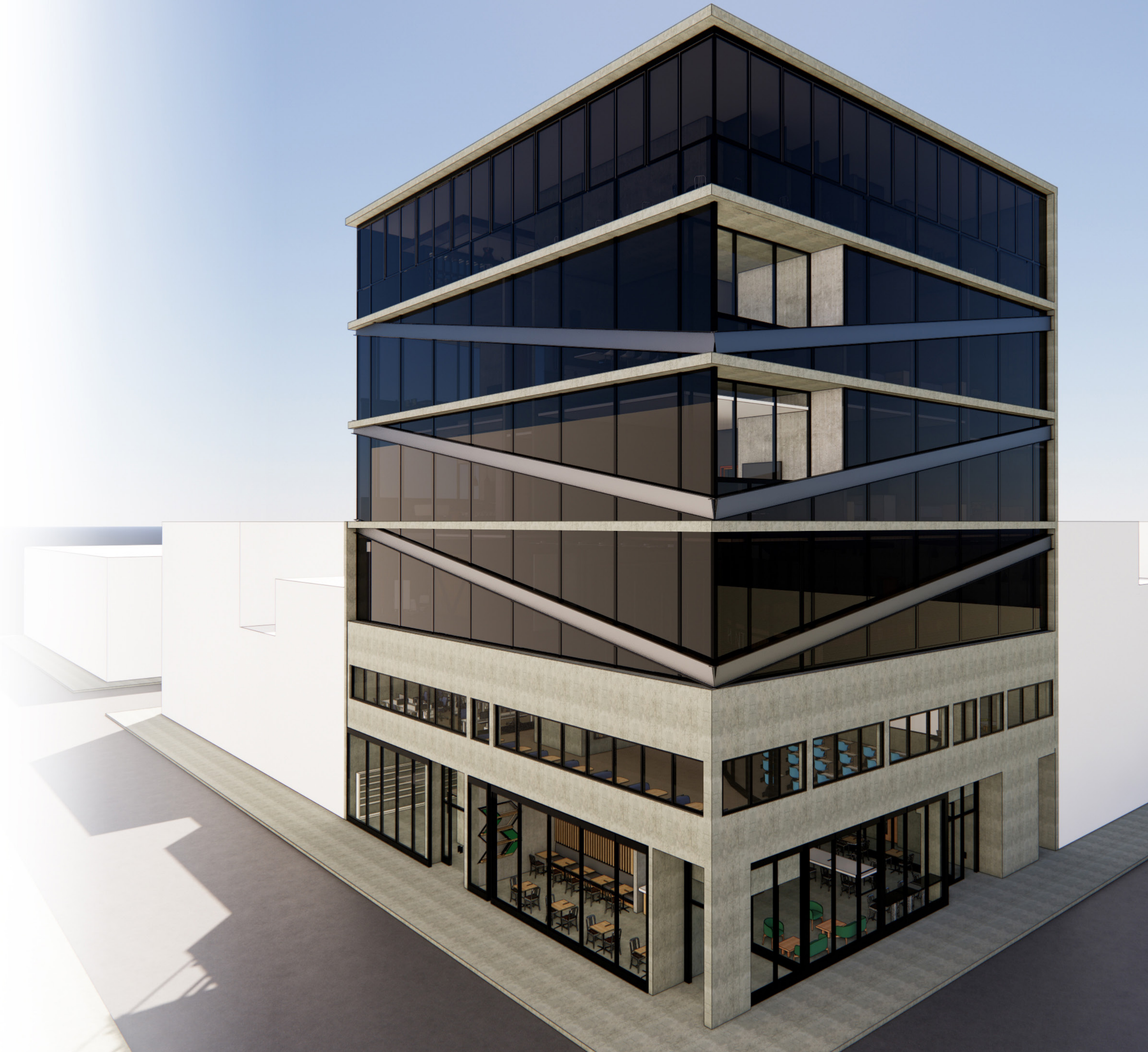
1ST FLOOR

COMMERCIAL COFFEE CHAIN
(**STARBUCKS**)

PACKAGE PICK-UP / DROP-OFF OFFICE
ELECTRONIC STORE

BASEMENT

MECHANICAL AND STORAGE





FACADE
GROUND LEVEL



07

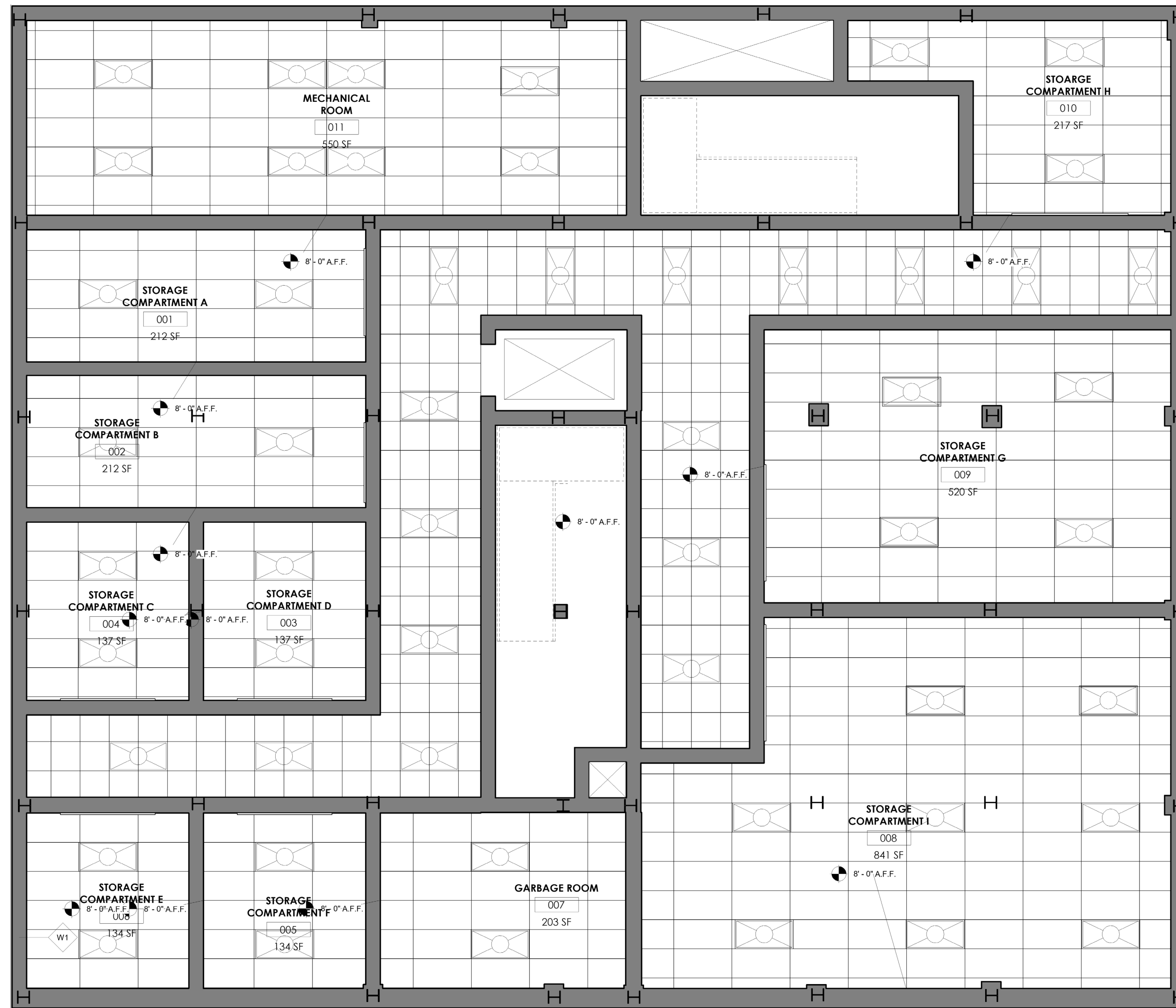
BASEMENT FLOOR PLAN

MECHANICAL AND STORAGE



BASEMENT FLOOR RCP

MECHANICAL AND STORAGE



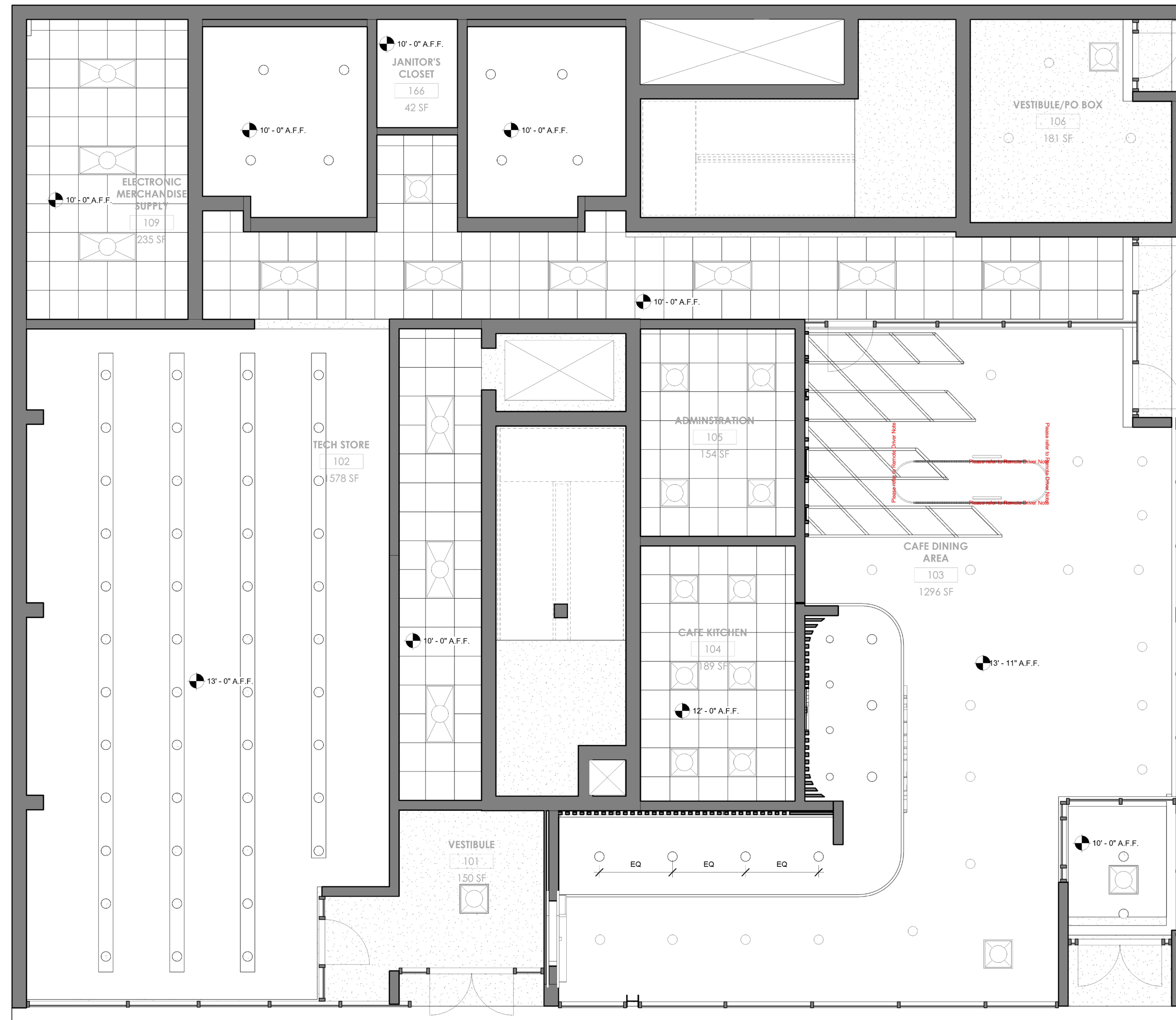
FIRST FLOOR PLAN

COMMERCIAL COFFEE CHAIN
 (STARBUCKS)
 PACKAGE PICK-UP/DROP-OFF OFFICE
 ELECTRONIC STORE



FIRST FLOOR RCP

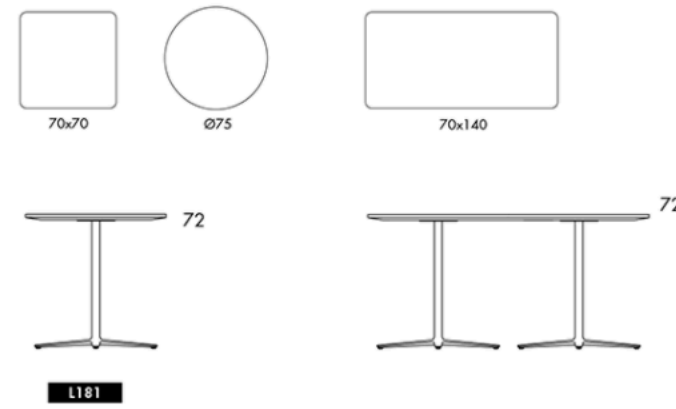
COMMERCIAL COFFEE CHAIN
 (STARBUCKS)
 PACKAGE PICK-UP/DROP-OFF OFFICE
 ELECTRONIC STORE



FIRST FLOOR FF&E

1) GAP TABLE

SPECIFICATIONS



LACQUERED BASE ALUMINUM
WHITE OAK TABLETOP FINISH



2) NAVY WOOD CHAIR

SPECIFICATIONS

Width	15.5" / 39cm
Depth	19.5" / 50cm
Height	34" / 86cm
Seat Height	18" / 46cm
Weight	11.5 lb / 5.2 kg
Material	Solid Wood - Walnut, White Oak or Black-Stained Oak *WHITE OAK
Warranty	3 Year warranty
Standard Glides	Soft Plastic (TPU) Glides



3) 111 NAVY BARSTOOL COLOR: CHARCOAL

SPECIFICATIONS

Width	17" / 43cm
Depth	18.5" / 47cm
Height	43" / 109cm
Seat Height	30" / 76cm
Weight	15lb / 6.8kg
Material	65% Recycled PET, 35% Glass Fiber & Color pigment
Warranty	5 Year Warranty
Strength & Stability Test	ANSI/BIFMA X5.1
Fire Retardant	Certified Acc. to CAL133
VOC Emissions Test	ANSI/BIFMA M7.1



4) NEST | LOW WOOD CHAIR

SPECIFICATIONS

MODELS:

Nest Low Wood Chair
GZ6300SK
W: 24.8"
D: 23.6"
H: 29.9"
SH: 18.9"

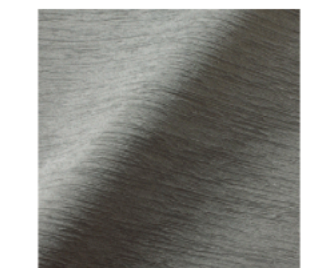


FINISHES:

Base Option
 Soaped Oak



UPHOLSTERY



PALLAS

ADELE

FABRIC COLOR: STONE
CONTENT: 66% POLYESTER
34% SOLUTION-DYED NYLON
FLAMMABILITY: NFPA 260, TB 117-2013
ABRASION: 100,000 DOUBLE-RUBS (WYZENBEEK)

MANUFACTURER: **Hightower**

5) NEST | LOW WOOD SOFA

SPECIFICATIONS

MODELS:

Nest Low Wood Sofa

GZ6400SK

W: 53.1"
D: 23.6"
H: 29.9"
SH: 18.9"



FINISHES:

Base Option



Soaped
Oak

UPHOLSTERY



ADELE

FABRIC COLOR: STONE
CONTENT: 66% POLYESTER
34% SOLUTION-DYED NYLON
FLAMMABILITY: NFPA 260, TB 117-2013
ABRASION: 100,000 DOUBLE-RUBS (WYZENBEEK)

MANUFACTURER: **Hightower**

7) COUNTERTOP FINISH

SPECIFICATIONS

BLACK ONYX MIRAGE

MATERIAL: QUARTZ
APPLICATION: COUNTERTOP

Solid Surface Type

Solid Surface 1/2"

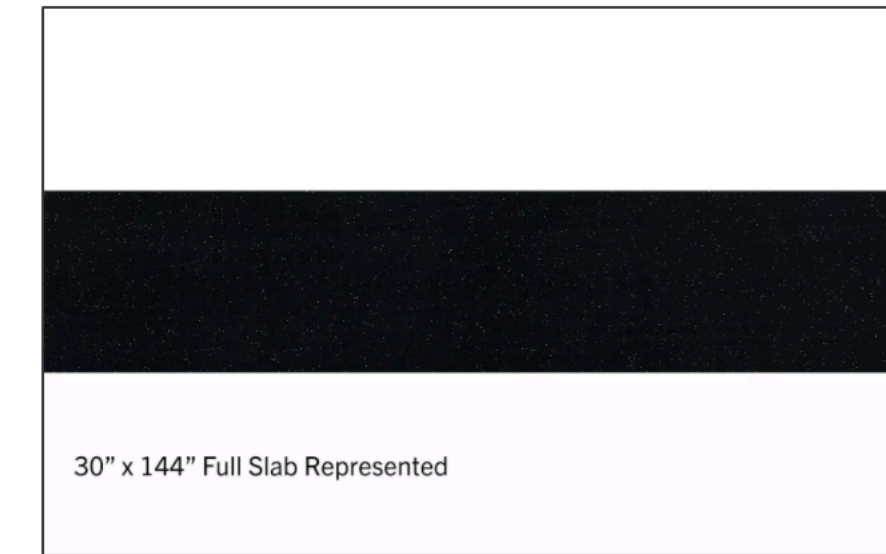
Product Type

051

WILSONART® SOLID SURFACE 1/2"

STANDARD SOLID SURFACE COMBINATIONS

Sheet Size	Min Orders
• 30" x 144"	1
• 60" x 144"	Varies

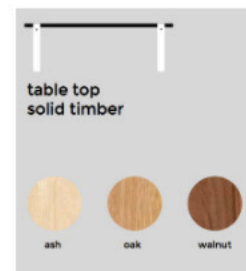
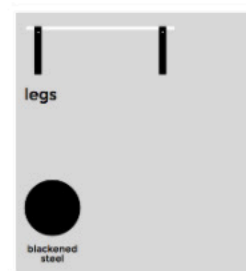


MANUFACTURER: **Wilsonart**

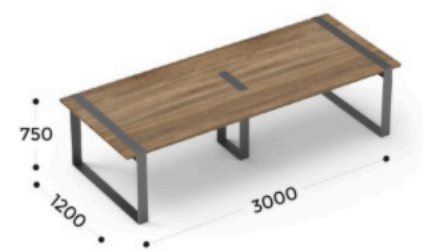
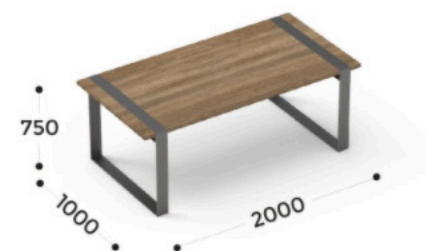
7) NAAG TABLE

SPECIFICATIONS

MODELS:



*OAK



MANUFACTURER: **workagile**

8) ATLAS POWER PENDANT

SPECIFICATIONS

Atlas Pendant	Atlas Power Pendant
ATL200	ATL250
DIA: 13"	DIA: 13"
H: 10.5"	H: 10.5"
	Power Drop: 20"



FINISHES:

Powder Coated Options



Gray



Cloud



Mist
Gloss



MANUFACTURER: **Hightower**





STOREFRONT
DIVISION ST.

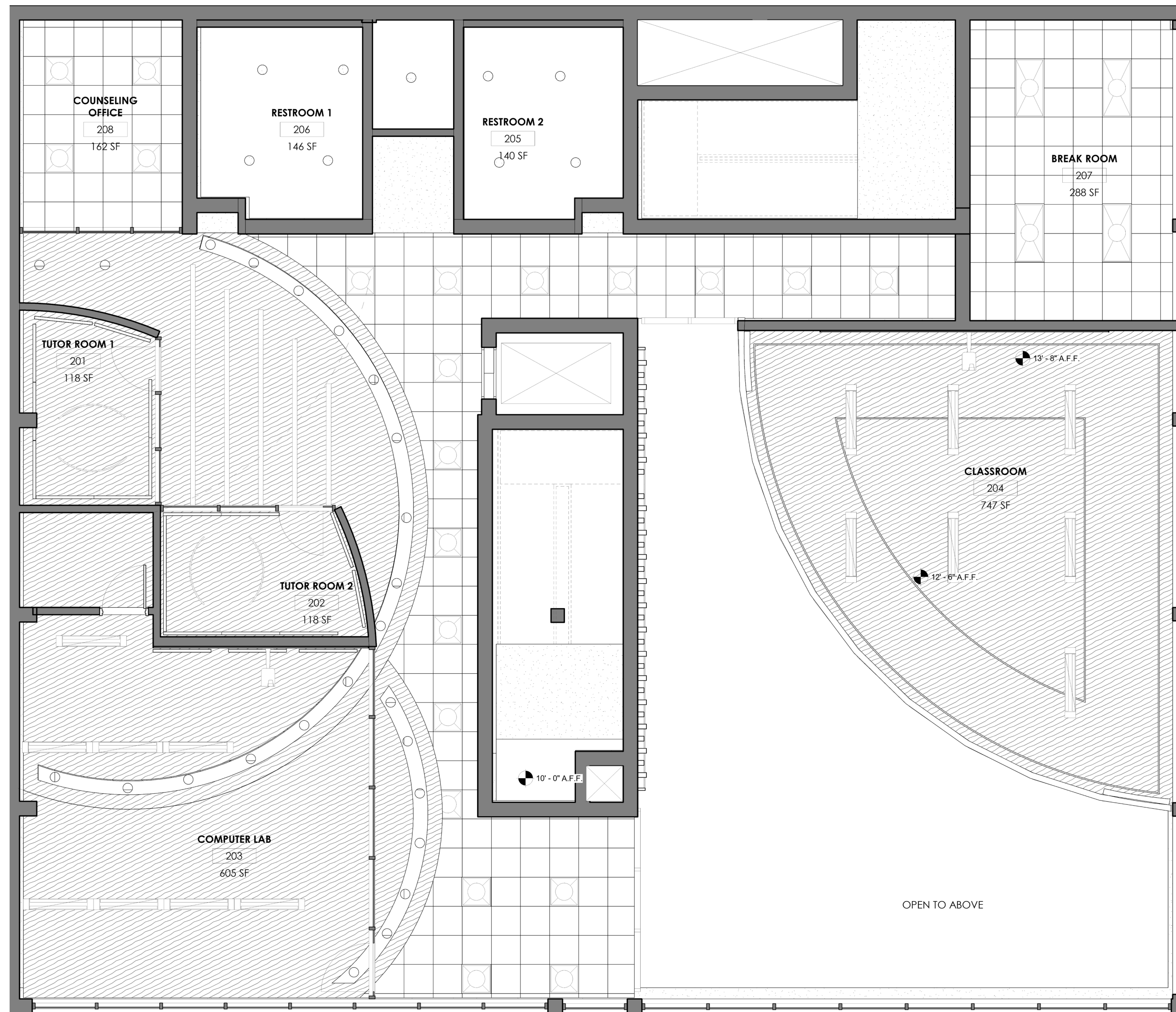
SECOND FLOOR PLAN

CENTER FOR ACADEMIC ADVANCEMENT



SECOND FLOOR RCP

CENTER FOR ACADEMIC ADVANCEMENT



SECOND FLOOR FF&E

1) VERSUS | OFFICE CHAIR

SPECIFICATIONS

Height: 39.3–43.3"
 Width: 26.3–28"
 Depth: 25.3–25.8"
 Seat Height: 17.1–21.2"
 Seat Depth: 15.5–18.3"
 Seat Width: 19.6"
 Arm Height: 7.6–11.4"



UPHOLSTERY



BACK



ALMANAC

FABRIC COLOR: TOURMALINE
 CONTENT: 65 % POST CONSUMER RECYCLED POLYESTER 20% POLYESTER 15% SOLUTION DYED NYLON
 FLAMMABILITY: NFPA 260 CLASS 1
 ABRASION: 100,000 DOUBLE-RUBS

SEAT



INFINITY C-ZERO

FABRIC COLOR: ALUMINUM
 CONTENT: 74% POST CONSUMER RECYCLED POLYESTER 26% POLYESTER
 FLAMMABILITY: NFPA 260 CLASS 1 ASTM E84
 ABRASION: 200,000 DOUBLE-RUBS

MANUFACTURER: Herman Miller

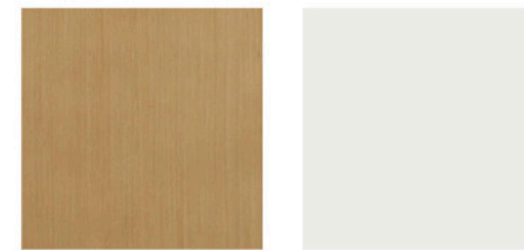
2) CANVAS CHANNEL | DESK

SPECIFICATIONS

HIVE 105
 WORK STATION: 6' X 6'
 TOTAL FOOTPRINT: 24' X 12'

MATERIALS & FINISHES

WORK SURFACE: OAK ON ASH, EU: WOOD & VENEER
 BASE FINISH: STUDIO WHITE, 98



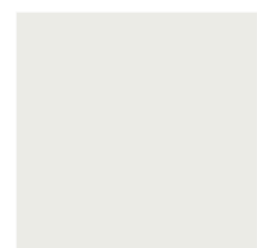
MANUFACTURER: Herman Miller

3) CAPER STACKING STOOL | STOOL

SPECIFICATIONS

TOTAL HEIGHT: 40.7 in
 SEAT HEIGHT: 20 in
 SEAT WIDTH: 24.5 in
 DEPTH: 26 in

SEAT FINISH:
 STUDIO WHITE, 98



FRAME FINISH:
 BLACK, BK



MANUFACTURER: Herman Miller

4) HEADWAY COMMUNAL TABLE | STANDING

SPECIFICATIONS

HEIGHT: 42 IN
 WIDTH: 24 IN
 LENGTH: 96 IN

MATERIALS & FINISHES

WORK SURFACE: OAK ON ASH, EU: WOOD & VENEER
 BASE FINISH: STUDIO WHITE, 98



MANUFACTURER: Herman Miller

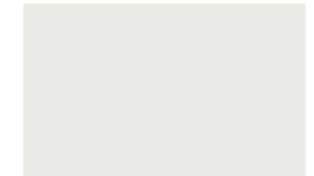
5) KEYN CHAIR 4 LEG-BASE | DESK CHAIR

SPECIFICATIONS

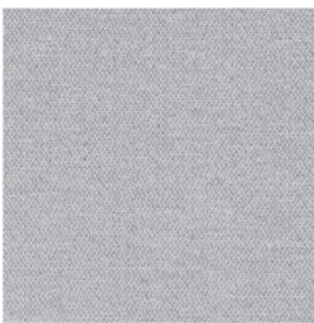
SEAT HEIGHT: 17 in
SEAT WIDTH: 19 in
HEIGHT: 28.5 in

SEAT BACK FINISH:
STUDIO WHITE, 98

FRAME FINISH:
BLACK, BK



UPHOLSTERY



INFINITY C-ZERO
FABRIC COLOR: ALUMINUM
CONTENT: 74% POST CONSUMER
RECYCLED POLYESTER
26% POLYESTER
FLAMMABILITY: NFPA 260 CLASS
1: ASTM E84
ABRASION: 200,000 DOUBLE-RUBS



MANUFACTURER: Herman Miller

7) EXCLAVE | CONFERENCE TABLE

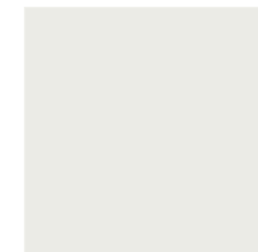
SPECIFICATIONS

HEIGHT: 29 in
WIDTH: 44 in
LENGTH: 42 in

MATERIALS & FINISHES

WORK SURFACE:
OAK ON ASH, EU:
WOOD & VENEER

BASE FINISH:
STUDIO WHITE,
98



MANUFACTURER: Herman Miller

6) EVERYWHERE TABLE | RECTANGULAR

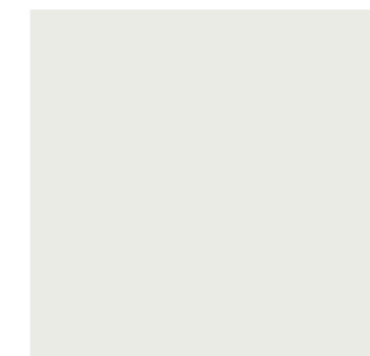
SPECIFICATIONS

LENGTH: 60 in
WIDTH: 24 in
HEIGHT: 28.5 in

MATERIALS & FINISHES

WORK SURFACE: OAK ON
ASH, EU: WOOD & VENEER

BASE FINISH: STUDIO
WHITE, 98



MANUFACTURER: Herman Miller

8) VERSUS | SIDE CHAIR

SPECIFICATIONS

DIMENSIONS

HEIGHT: 32.9 in
WIDTH: 24.8 in
DEPTH: 23.5 in
SEAT HEIGHT: 18.8 in
SEAT DEPTH: 16.3 in
SEAT WIDTH: 18.5 in
ARM HEIGHT: 8.7 in

FRAME FINISH:
BLACK, BK



UPHOLSTERY



INFINITY C-ZERO
FABRIC COLOR: ALUMINUM
CONTENT: 74% POST CONSUMER
RECYCLED POLYESTER
26% POLYESTER
FLAMMABILITY: NFPA 260 CLASS
1: ASTM E84
ABRASION: 200,000 DOUBLE-RUBS



MANUFACTURER: Herman Miller



2ND FLOOR
FEATURE WALL



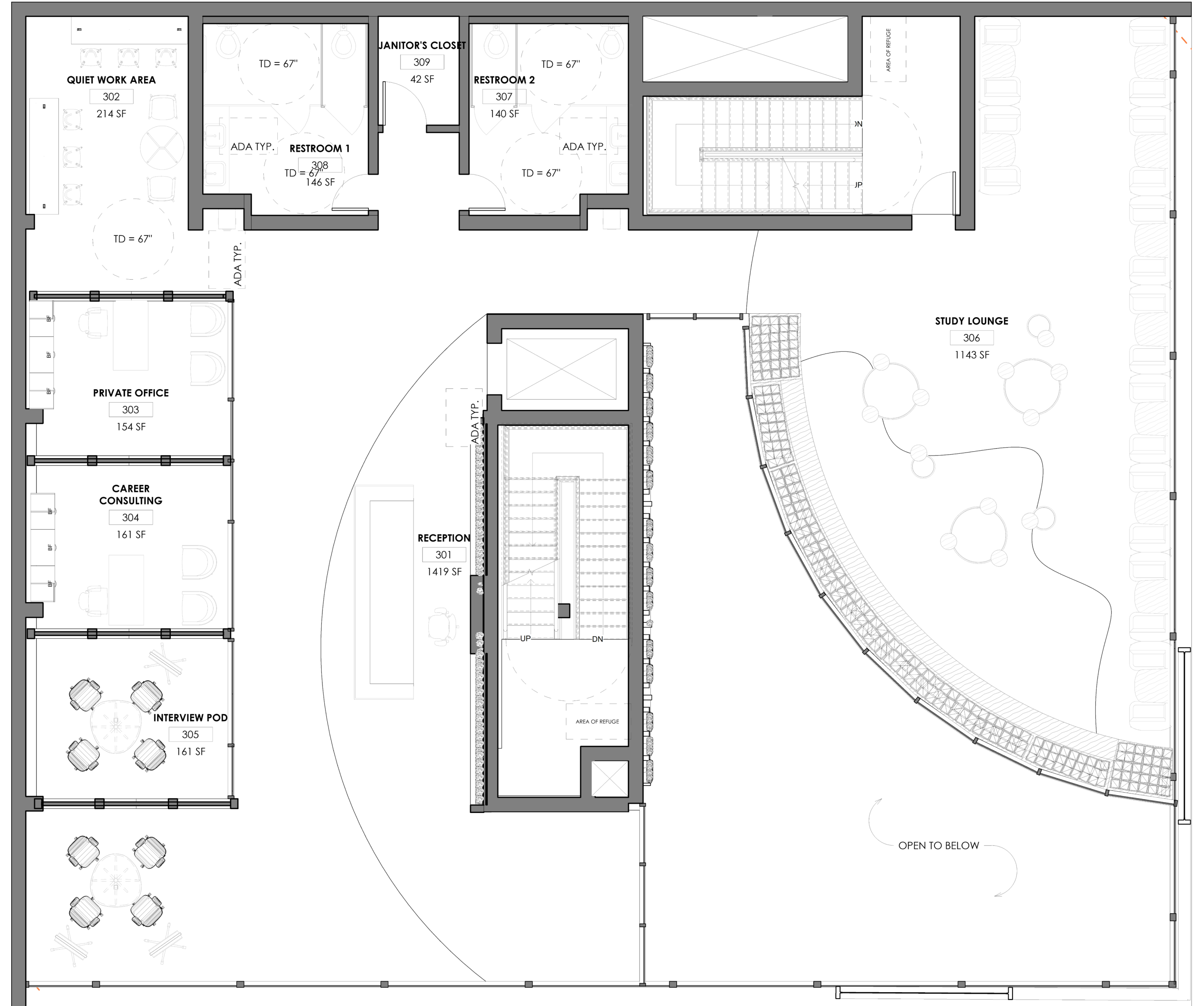
2ND FLOOR
TUTOR ROOMS

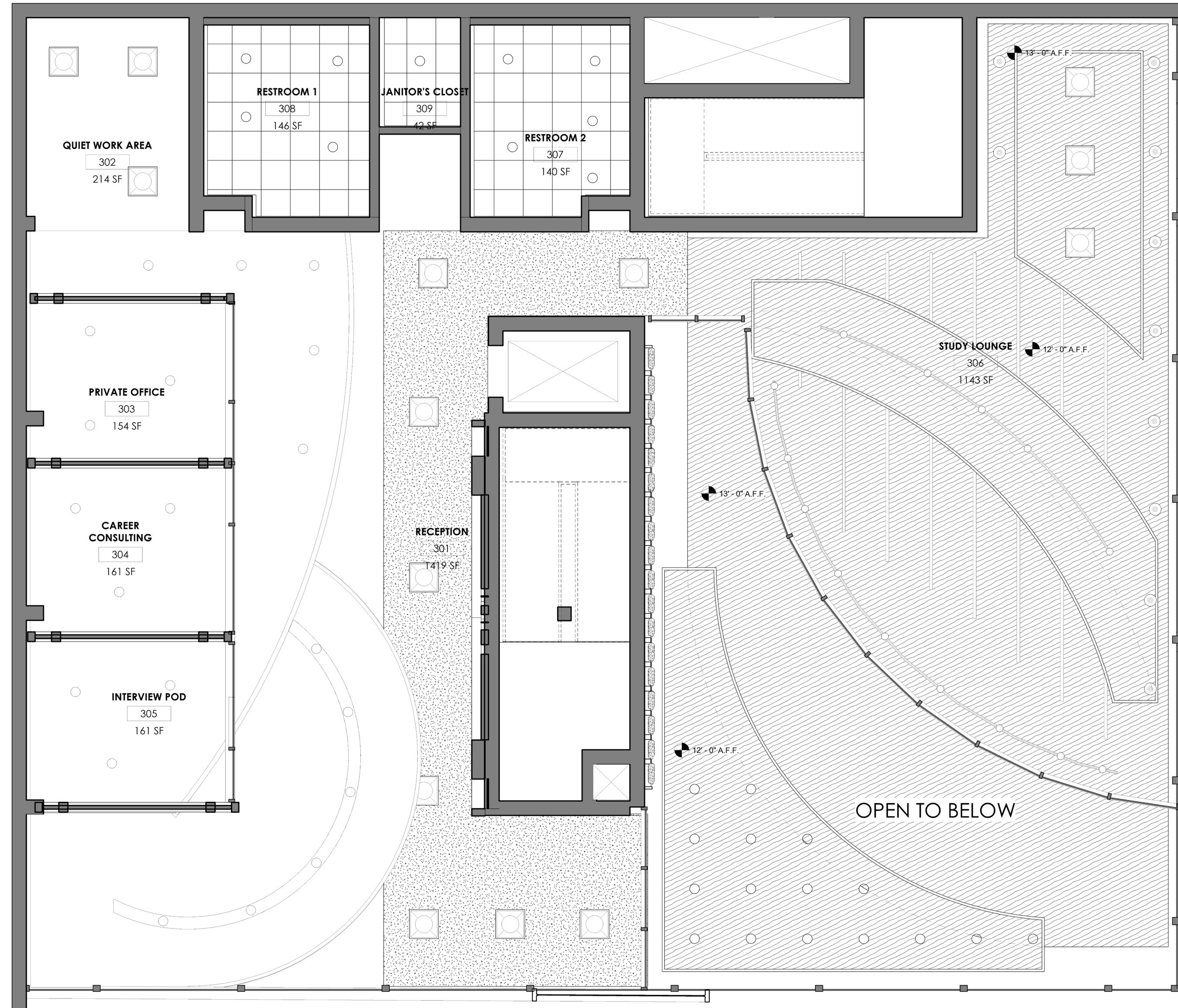


21

THIRD FLOOR PLAN

CENTER FOR CAREER PLANNING





THIRD FLOOR RCP

CENTER FOR CAREER PLANNING

THIRD FLOOR FF&E

1) VERSUS | OFFICE CHAIR

SPECIFICATIONS

Height: 39.3-43.3"
 Width: 26.3-28"
 Depth: 25.3-25.8"
 Seat Height: 17.1-21.2"
 Seat Depth: 15.5-18.3"
 Seat Width: 19.6"
 Arm Height: 7.6-11.4"



UPHOLSTERY



BACK



ALMANAC
 FABRIC COLOR: UMBER
 CONTENT: 65 % POST CONSUMER RECYCLED POLYESTER 20% POLYESTER 15% SOLUTION DYED NYLON
 FLAMMABILITY: NFPA 260 CLASS 1
 ABRASION: 100,000 DOUBLE-RUBS

SEAT



INFINITY C-ZERO
 FABRIC COLOR: ECLIPSE
 CONTENT: 74% POST CONSUMER RECYCLED POLYESTER 26% POLYESTER
 FLAMMABILITY: NFPA 260 CLASS 1 ASTM E84
 ABRASION: 200,000 DOUBLE-RUBS

MANUFACTURER: Herman Miller

2) CANVAS CHANNEL | DESK

SPECIFICATIONS

HIVE 105
 WORK STATION: 6' X 6'
 TOTAL FOOTPRINT: 24' X 12'

MATERIALS & FINISHES

WORK SURFACE: OAK ON ASH, EU; WOOD & VENEER
 BASE FINISH: STUDIO WHITE, 98



MANUFACTURER: Herman Miller

3) EXCLAVE | CONFERENCE TABLE

SPECIFICATIONS

HEIGHT: 29 in
 WIDTH: 44 in
 LENGTH: 42 in

MATERIALS & FINISHES

WORK SURFACE: OAK ON ASH, EU; WOOD & VENEER
 BASE FINISH: STUDIO WHITE, 98



MANUFACTURER: Herman Miller

4) CAPER STACKING STOOL | STOOL

SPECIFICATIONS

TOTAL HEIGHT: 40.7 in
 SEAT HEIGHT: 20 in
 SEAT WIDTH: 24.5 in
 DEPTH: 26 in

SEAT FINISH: STUDIO WHITE, 98
 FRAME FINISH: BLACK, BK



MANUFACTURER: Herman Miller

5) HEADWAY COMMUNAL TABLE | STANDING

SPECIFICATIONS

HEIGHT: 42 IN
 WIDTH: 24 IN
 LENGTH: 96 IN

MATERIALS & FINISHES

WORK SURFACE: OAK ON ASH, EU: WOOD & VENEER
BASE FINISH: STUDIO WHITE, 98



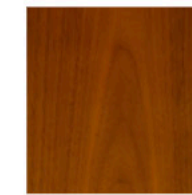
MANUFACTURER: HermanMiller

7) WOOD BASE SOFA | SOFA

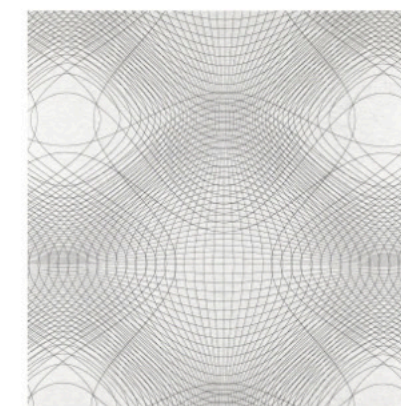
SPECIFICATIONS

HEIGHT: 40 in
 WIDTH: 30 in
 LENGTH: 84 in
 SEAT HEIGHT: 20 in
 SEAT WIDTH: 24.5 in
 DEPTH: 26 in

BASE FRAME: LIGHT BROWN WALNUT



UPHOLSTERY



VEER
FABRIC COLOR: WHITE
CONTENT: 100% TERRATEX POST CONSUMER RECYCLED POLYESTER
FLAMMABILITY: NFPA 260 CLASS 1: ASTM E84
ABRASION: 100,000 DOUBLE-RUBS



MANUFACTURER: HermanMiller

6) KEYN CHAIR 4 LEG-BASE | DESK CHAIR

SPECIFICATIONS

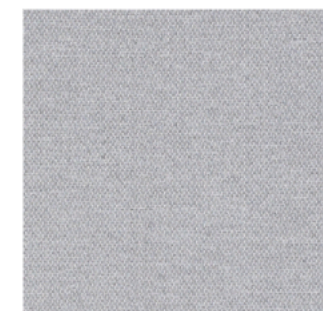
SEAT HEIGHT: 17 in
 SEAT WIDTH: 19 in
 HEIGHT: 28.5 in

SEAT BACK FINISH: STUDIO WHITE, 98

FRAME FINISH: BLACK, BK



UPHOLSTERY



INFINITY C-ZERO
FABRIC COLOR: ALUMINUM
CONTENT: 74% POST CONSUMER RECYCLED POLYESTER 26% POLYESTER
FLAMMABILITY: NFPA 260 CLASS 1: ASTM E84
ABRASION: 200,000 DOUBLE-RUBS



MANUFACTURER: HermanMiller

8) ALI COFFEE TABLE | COFFEE / SIDE TABLE

SPECIFICATIONS

HEIGHT: 17.5 in
 WIDTH: 33.5 in
 DEPTH: 33.5 in

MATERIALS & FINISHES

TABLE TOP: OAK ON ASH, EU: WOOD & VENEER

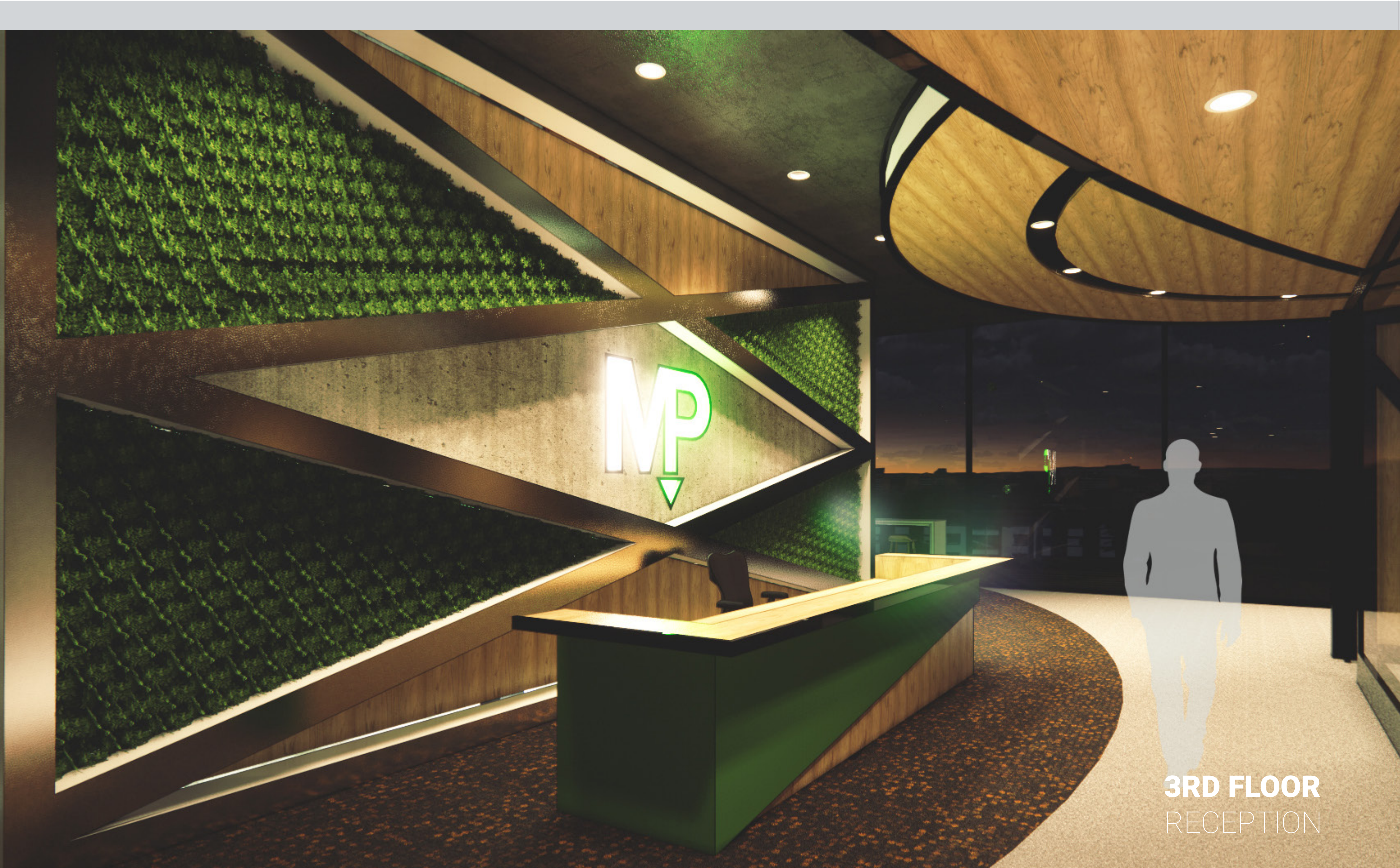
FRAME FINISH: BLACK, BK



MANUFACTURER: HermanMiller



3RD FLOOR
STUDY LOUNGE



MP

3RD FLOOR
RECEPTION

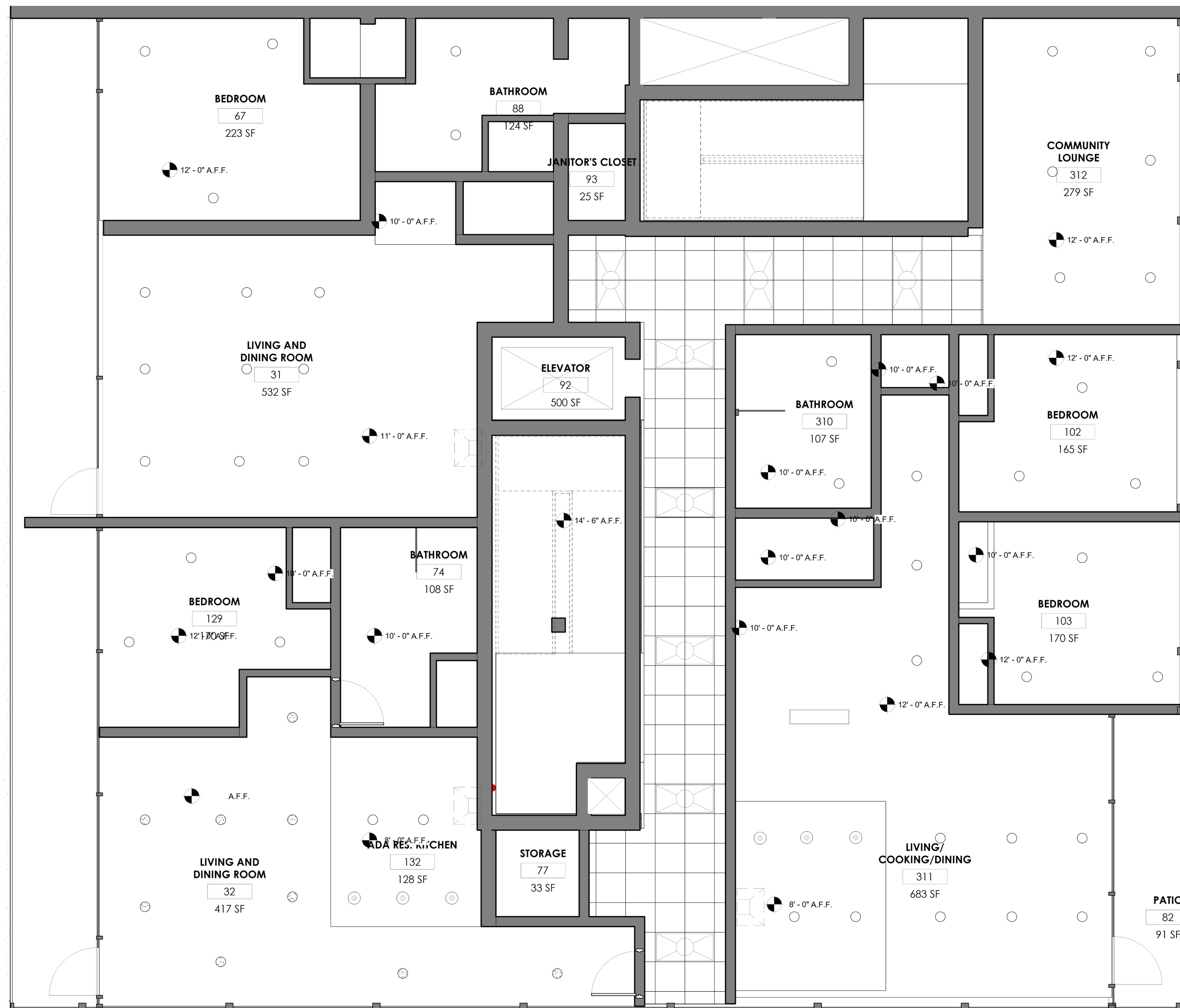
26



FOURTH/FIFTH FLOOR PLAN

UNIVERSALLY DESIGNED
LOW-INCOME HOUSING





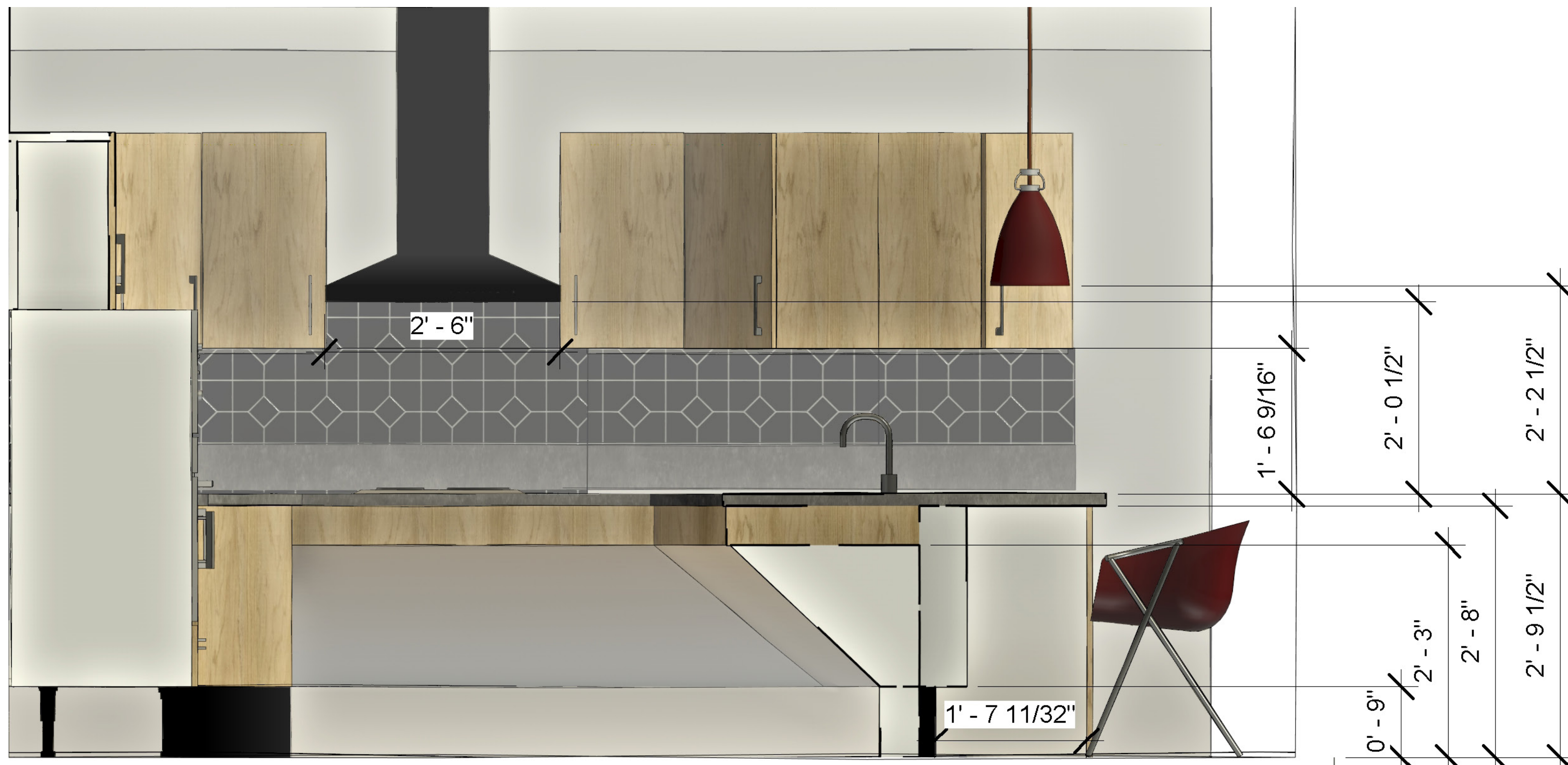
FOURTH/FIFTH RCP

UNIVERSALLY DESIGNED
LOW-INCOME HOUSING

KITCHEN ELEVATION 1



KITCHEN ELEVATION 2





4TH/5TH FLOOR
SINGLE APARTMENT
LIVING AREA



4TH/5TH FLOOR
ADA KITCHEN



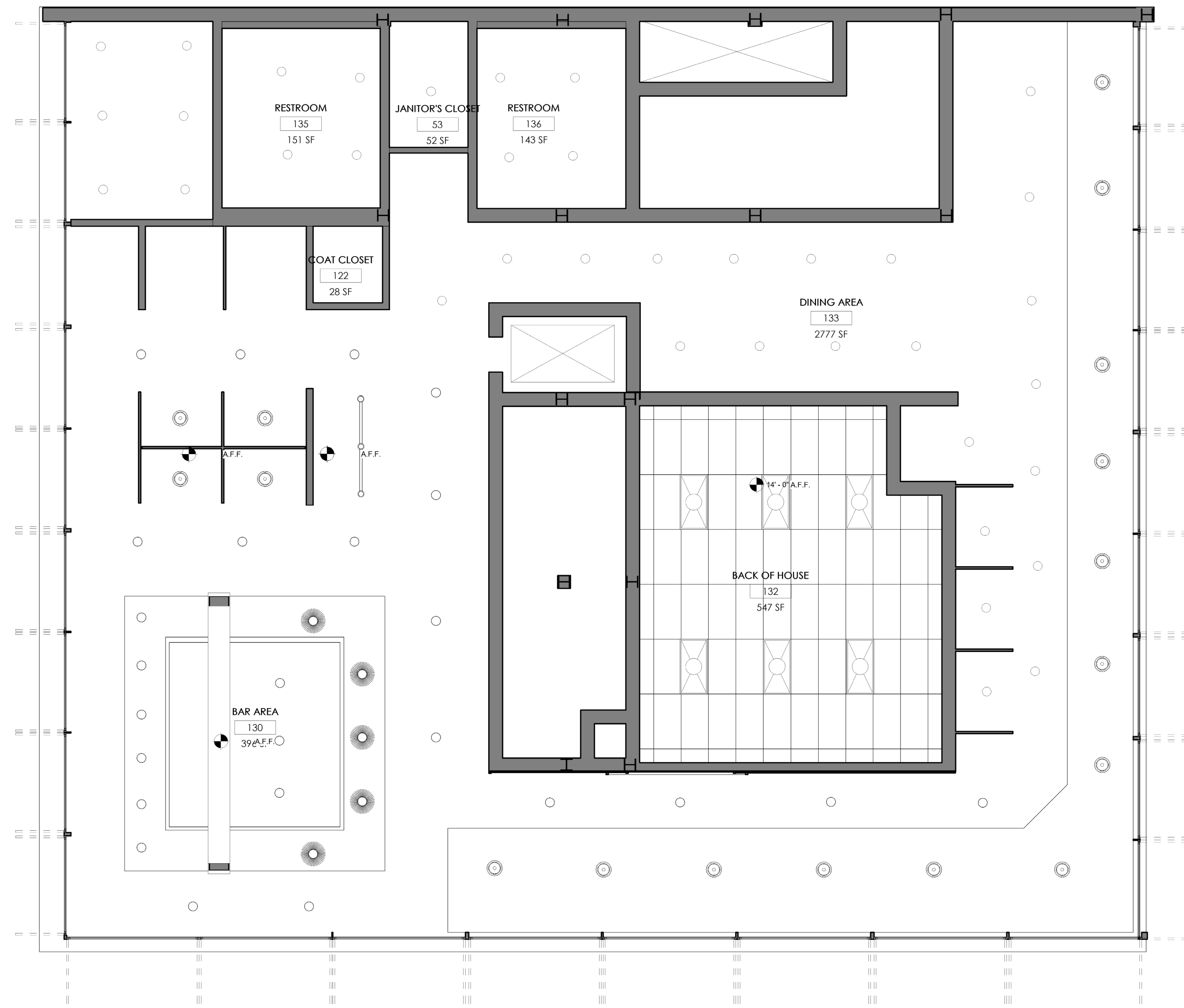
SIXTH FLOOR PLAN

ODD FELLOWS
MID-RANGE RESTAURANT AND BAR



SIXTH FLOOR RCP

ODD FELLOWS
MID-RANGE RESTAURANT AND BAR



SIXTH FLOOR FF&E

1) 2 INCH FLAT BASE TABLE SQUARE TOP

SPECIFICATIONS

Diameter	30" / 76cm
Height	29" / 73cm
Weight	38lb / 17.2kg
Table top finishes	Handbrushed natural anodized aluminum/Solid Ash or Walnut/HPL or Laminate with exposed Plywood edge in Black, Gray or White *WALNUT
Table top shapes	Round or square *SQUARE
Table base finishes	Recycled aluminum - clear anodized or black powder coated
Warranty	5 Year Warranty
Outdoor	3 Year Warranty for tables with aluminum tops



2) 2 INCH FLAT BASE TABLE ROUND TOP

SPECIFICATIONS

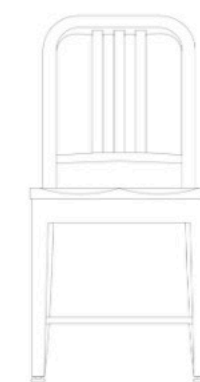
Diameter	30" / 76cm
Height	29" / 73cm
Weight	38lb / 17.2kg
Table top finishes	Handbrushed natural anodized aluminum/Solid Ash or Walnut/HPL or Laminate with exposed Plywood edge in Black, Gray or White *WALNUT
Table top shapes	Round or square *ROUND
Table base finishes	Recycled aluminum - clear anodized or black powder coated
Warranty	5 Year Warranty
Outdoor	3 Year Warranty for tables with aluminum tops



3) 1104 NAVY COLLECTION WITH WOOD SEAT

SPECIFICATIONS

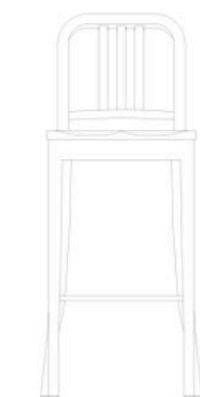
Width	16.5" / 42cm
Depth	20" / 51cm
Height	34" / 86cm
Seat Height	18" / 46cm
Weight	10lb / 4.5kg
Material	Recycled Aluminum - Hand Brushed or Hand Polished
Seat	Carved Solid Wood Seat, Natural Finish - Ash, Cherry, Walnut or Oak *WALNUT
Warranty	5 Year warranty (indoor use)
Strength & Stability Test	ANSI/BIFMA X5.1
Fire Retardant	Aluminum is naturally fireproof
Standard Glides	Soft Plastic (TPU) Glides



4) 1104 NAVY BARSTOOL WITH WOOD SEAT

SPECIFICATIONS

Width	16.5" / 42cm
Depth	20" / 51cm
Height	34" / 86cm
Seat Height	18" / 46cm
Weight	10lb / 4.5kg
Material	Recycled Aluminum - Hand Brushed or Hand Polished
Seat	Carved Solid Wood Seat, Natural Finish - Ash, Cherry, Walnut or Oak *WALNUT
Warranty	5 Year warranty (indoor use)
Strength & Stability Test	ANSI/BIFMA X5.1
Fire Retardant	Aluminum is naturally fireproof
Standard Glides	Soft Plastic (TPU) Glides



5) KEDZIE RESTAURANT BOOTH

SPECIFICATIONS

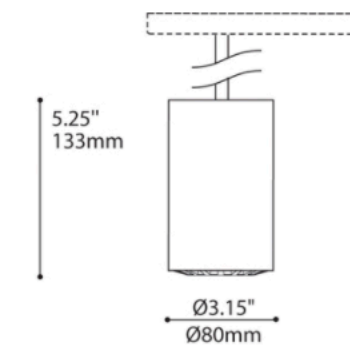
- SEAT HEIGHT: 18"
- OVERALL HEIGHT: 36"/42"/48"
- SINGLE/DOUBLE LENGTH 30"/48"/60"/72"
- BANQUETTE/CIRCLE LENGTH: ANY
- OVERALL SINGLE DEPTH: 25"
- LOWER BASE: UPHOLSTERED/LAMINATE/WOOD



MANUFACTURER:  Chicago Booth Manufacturing

6) BROADWAY PENDANT LIGHTING

SPECIFICATIONS



OVERALL HEIGHT	HAUTEUR HORS TOUT			
LIGHT SOURCE	LED RW TRACK 1 CIRCUIT	LED TRACK 1 CIRCUIT	LED*	LED DIM* & RW 277V**
MOUNTING	2734B	2734E	2401C	2403G
CABLE	66.90"	66.60"	67.10"	66.10"
STEM	42.90"	44.60"	42.10"	43.10"


*FOR NO STEM / STEM 4128K-CANDOPY 2401C + ACCESSORY 3983

MOUNTING OPTIONS	OPTIONS DE MONTAGE			
2734B 1.48" x 1.38" 37.6 x 35mm	2734E 6.13" x 2.00" 156.4 x 51mm	2401C 0.43" x 0.57" 10.9 x 14.5mm	2403G 0.43" x 1.50" 10.9 x 38mm	

*OVERALL HEIGHT DOES NOT INCLUDE TRACK THICKNESS

STEM OR CABLE OPTIONS	OPTIONS DE TIGE OU CABLE	
STEM STD 36" 914mm	AC CABLE STD 60" 1523mm	



MANUFACTURER:  EUREKA

7) CHART PENDANT LIGHTING

SPECIFICATIONS

Large (P3)

CAR305

D: 15.75"
H: 20.5"



FINISHES:

Shade Options



Dark Sienna



MANUFACTURER: **Hightower**



6TH FLOOR
RECEPTION AND BAR



MP
↓

6TH FLOOR
BAR

38

MP



6TH FLOOR
DINING AREA 1

39



MP

6TH FLOOR
DINING AREA 2

40

THANK YOU!

MILLENNIUM POINT

