



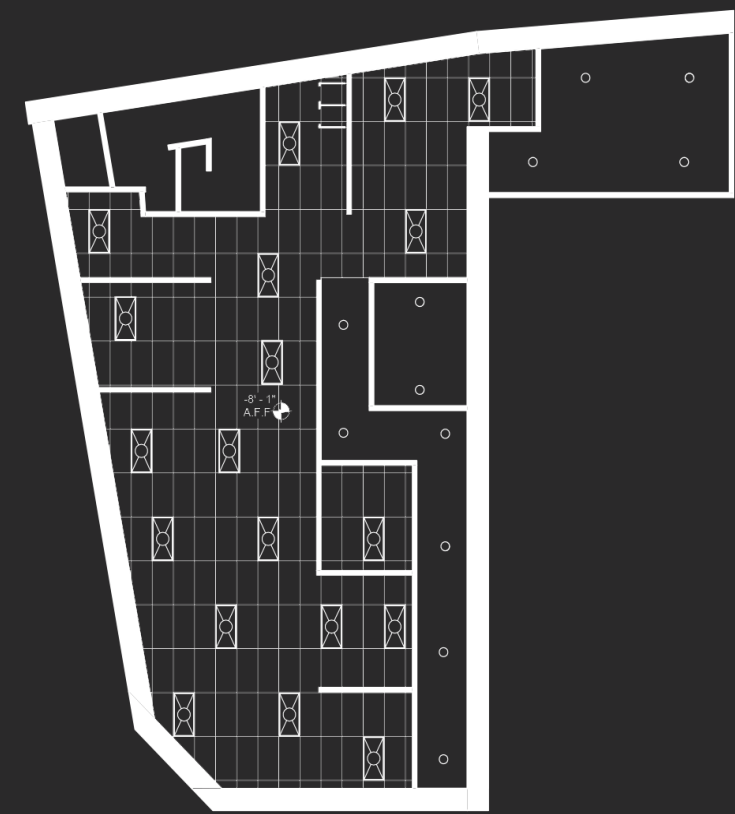
CONTRASTO EXTERIOR 24

BAR  
+  
KITCHEN

C  
O  
N  
T  
R  
A  
S  
T  
O

# TABLE OF CONTENTS

- CONCEPT ..... 3
- MOODBOARD ..... 4
- ZONING ..... 5
- FIRST LEVEL FLOOR PLAN ..... 6
- LIGHTMAP ..... 7
- VESTIBULE ..... 8-9
- ADA BAR ..... 10-11
- BAR ..... 12-13
- MAIN DINING ..... 14-19
- BAR ANTHROPOMETRICS ..... 20
- FINISHES + FURNITURE ..... 21
- BASEMENT LEVEL FLOOR PLAN ..... 22
- REFLECTED CEILING PLANS ..... 23
- CONTRASTO EXTERIOR ..... 24







BASEMENT LEVEL RCP

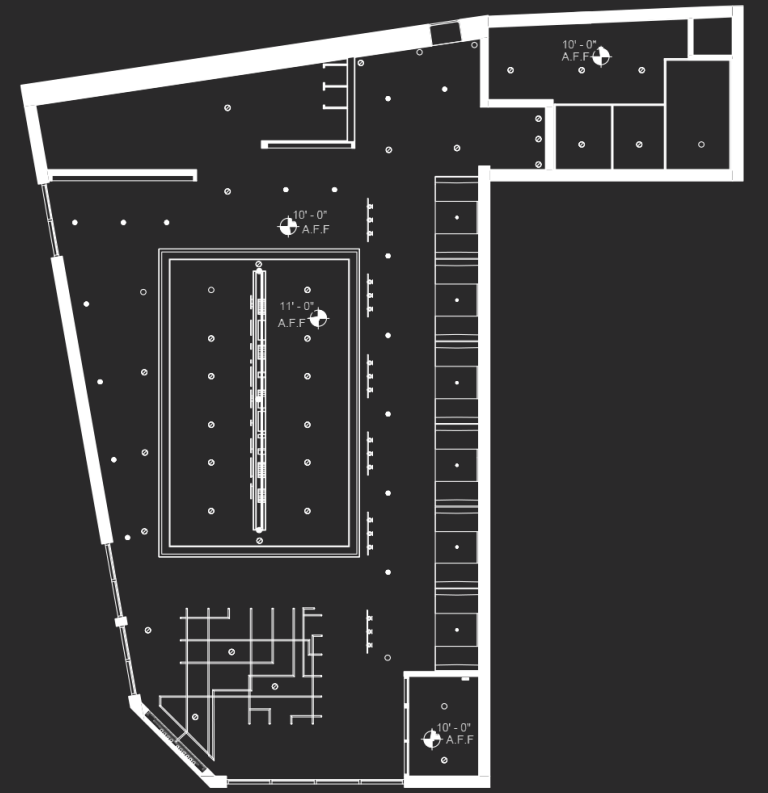
LIGHT SELECTIONS

-  TROFFER LIGHT
-  RECESSED CAN

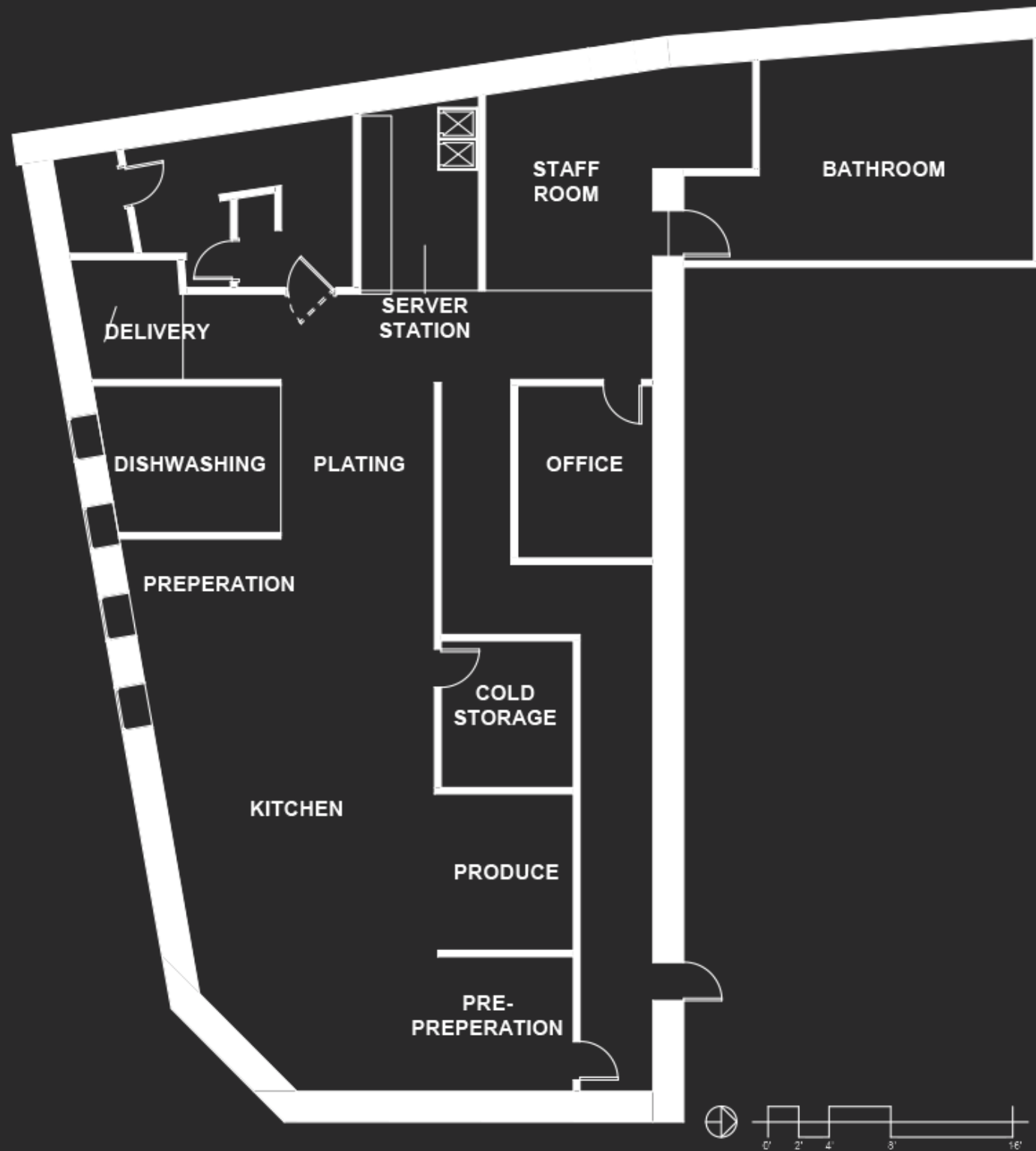
FIRST LEVEL FLOOR RCP

LIGHT SELECTIONS

-  TRACK LIGHTING
-  RECESSED CAN
-  EUREKA DROP PENDANT
-  CUSTOM COPPER PENDANT



REFLECTED CEILING PLANS 23



**Name of Brand:** CONTRASTO

**Concept:** Camera Film

Known today as the “Birthplace of Amateur Photography”, Rochester lives up to its reputation as an innovative city full of creativity and imagination. With early systems of films only able to photograph and project in black and white, the Eastman Kodak Company introduced the very first “color film” that was able to display color in still and motion pictures. CONTRASTO will showcase the birth of films and their elements to produce vivid pictures to capture the progression in films influencing life today.

CONTRASTO will be located on the first story and lower level of 151 St. Paul Street. Inspired by the progression of film, the use of color, light, depth, and perception will attract a sense of vibrancy that the diverse community of Rochester can embody. The restaurant will feature a powerful atmosphere created by the dramatic use of lighting to showcase the contrast between the negative and positive moments of life. A neutral color scheme will serve to accent a modern-contemporary theme that visually balances and creates a visual flow through the layout of the space. Through organic and repurposed material selections, the space will bring depth and meaningful reinvention.

**Goals:**

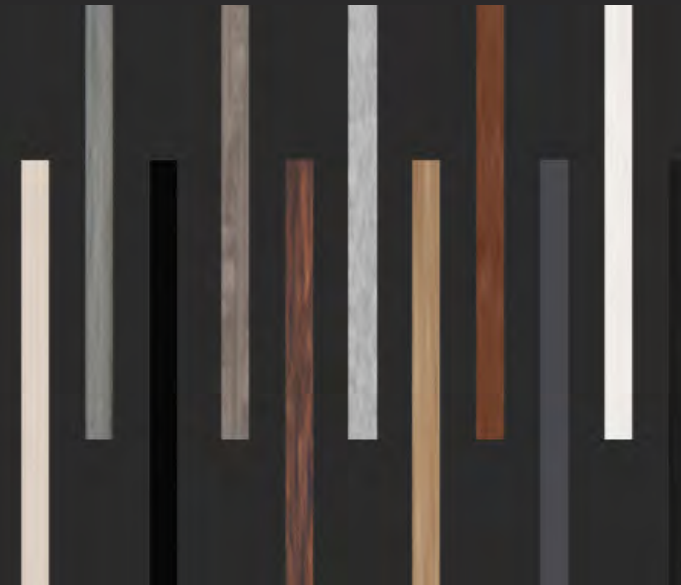
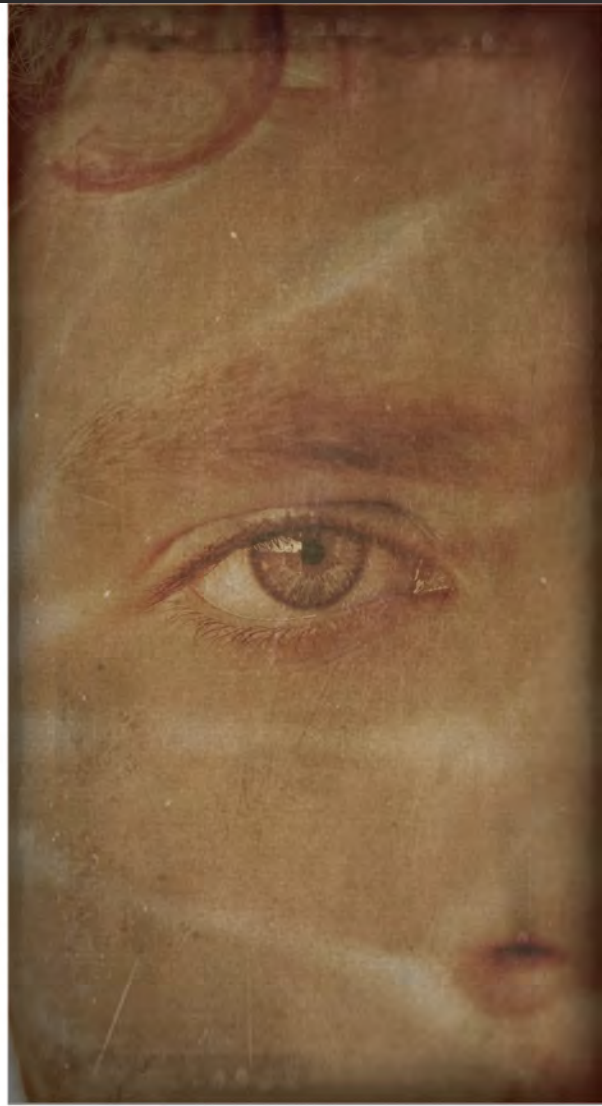
- ADA accessible/ Universally designed
- Combine modern-contemporary theme with historic qualities of exterior

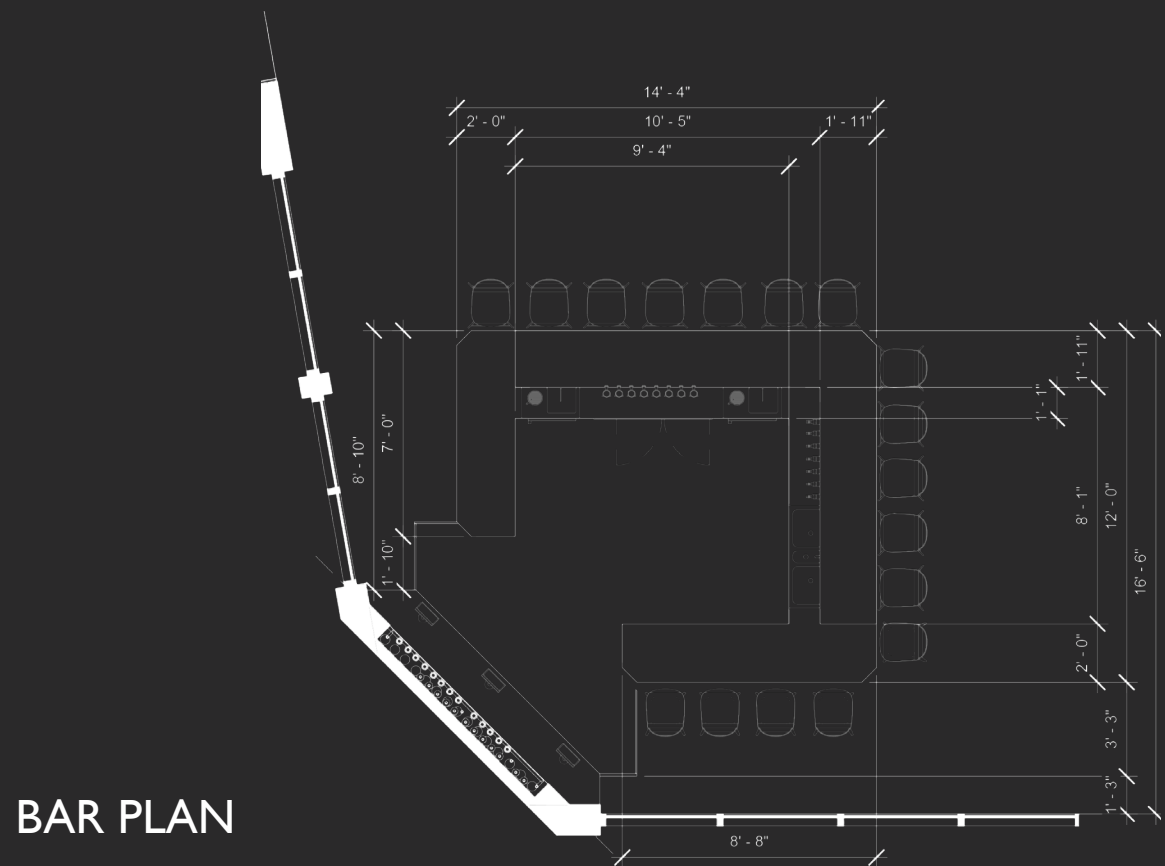
**Objectives:**

- Showcase depth and perception by using lighting and white/negative space

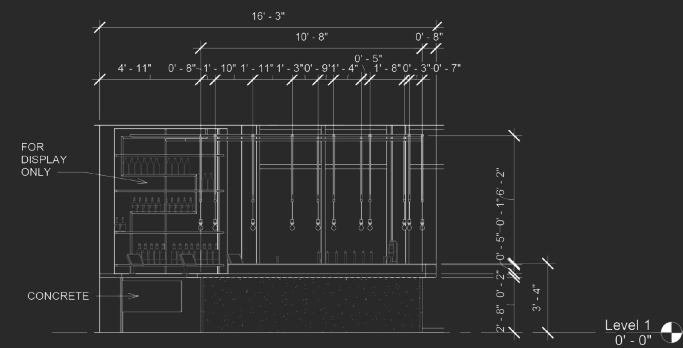
**Limitations:**

- No access to natural light on lower level
- Historic qualities of exterior must be kept in its original state

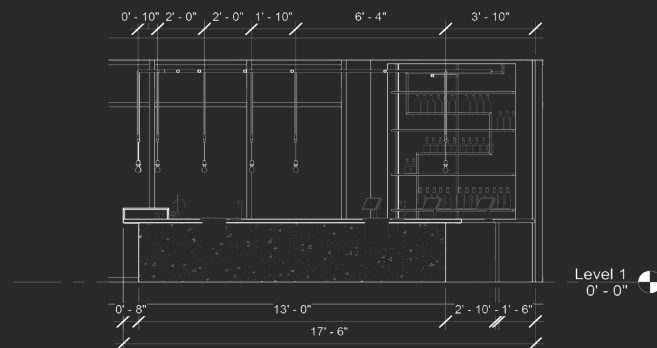




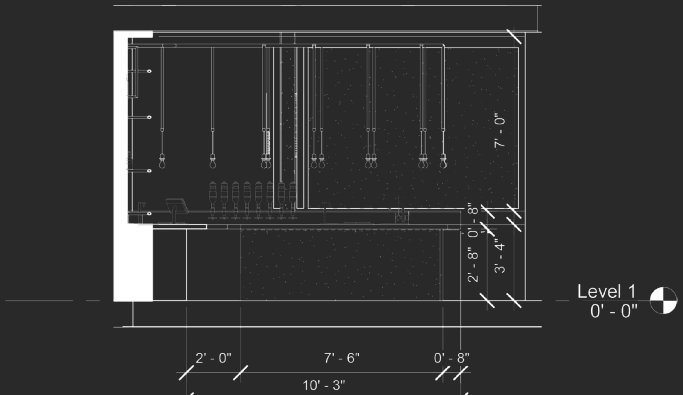
BAR PLAN



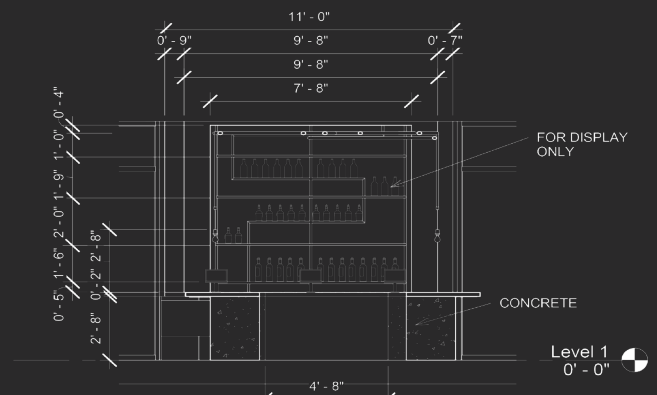
ELEVATION - 1



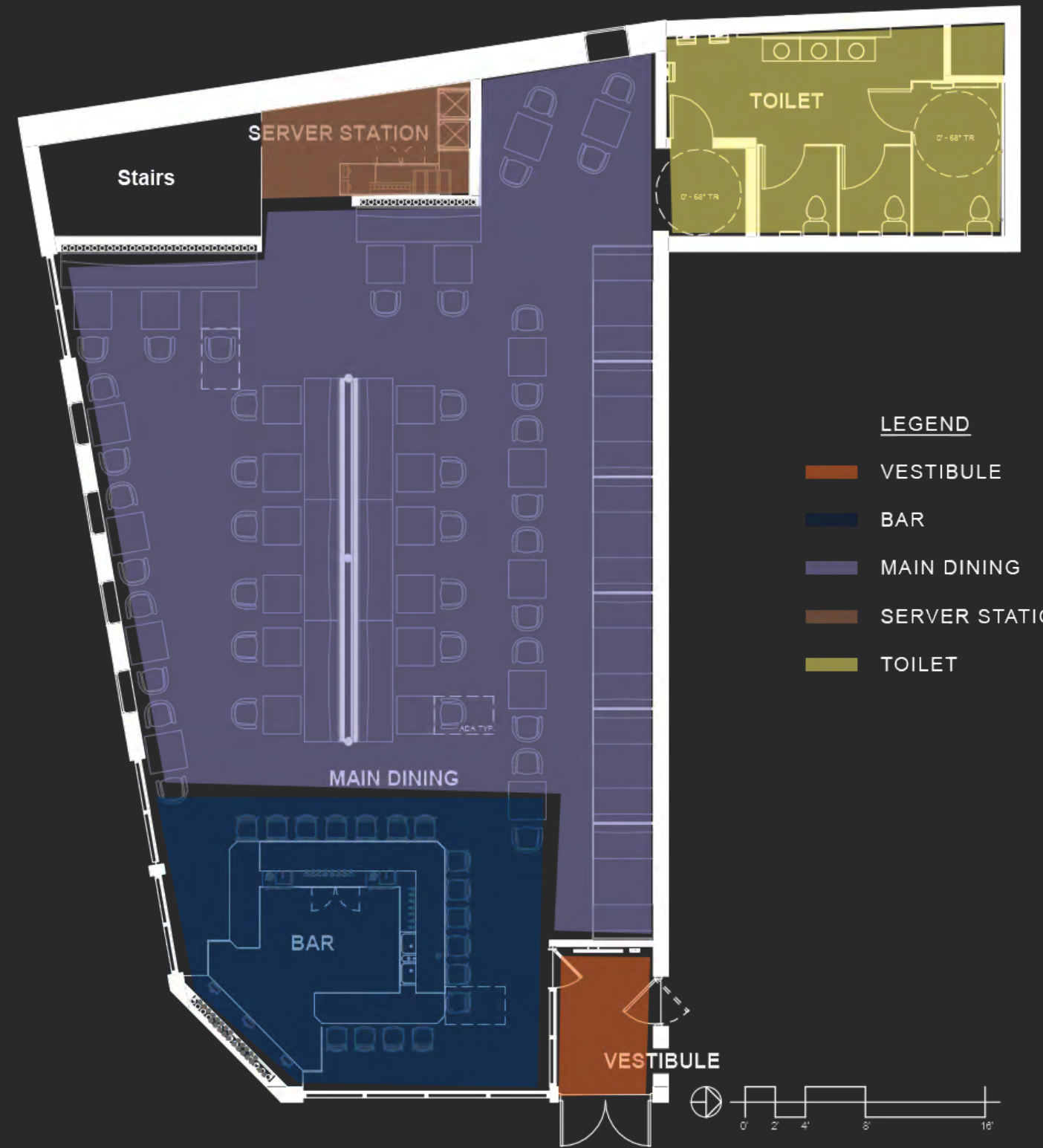
ELEVATION - 2

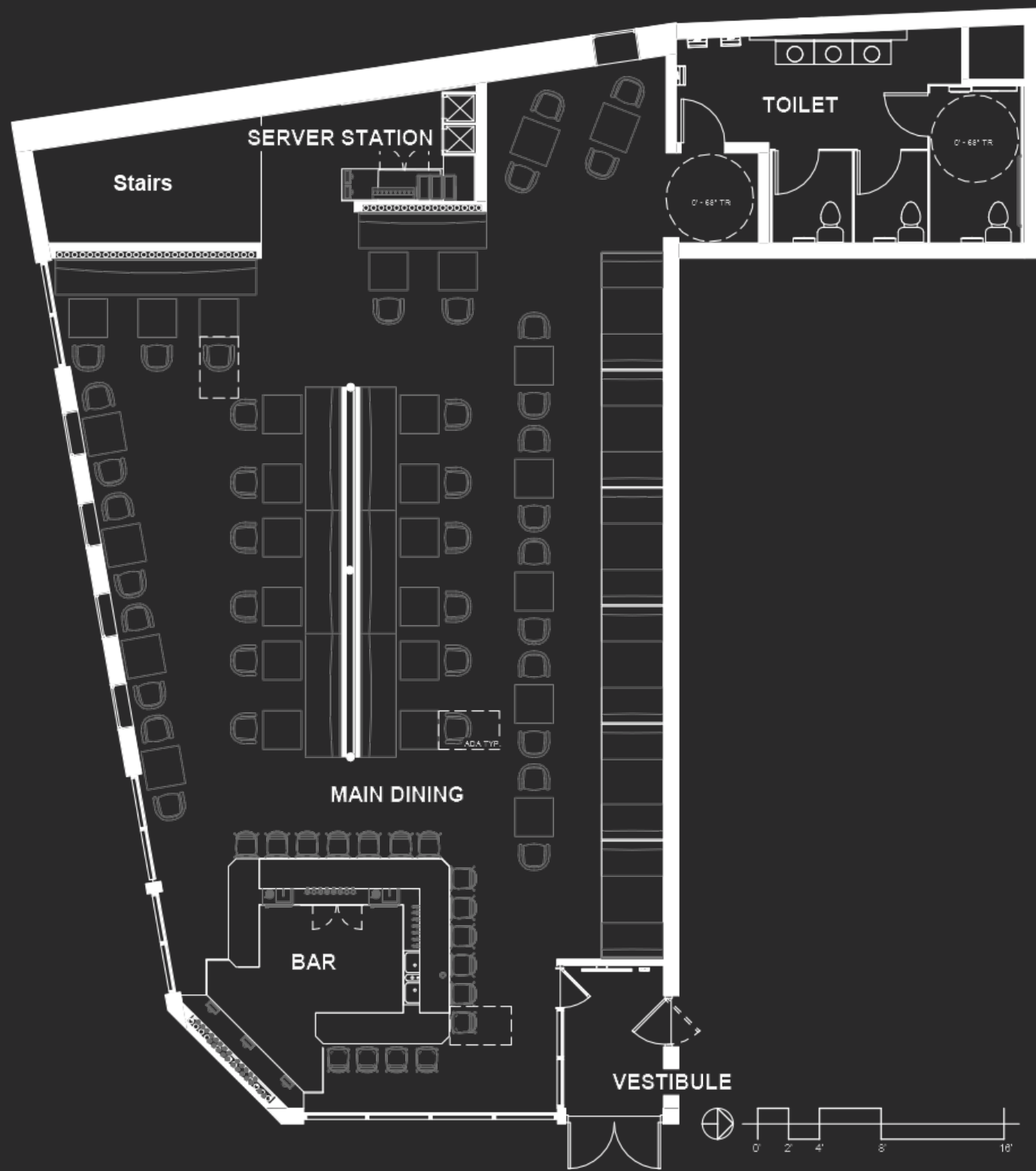


ELEVATION - 3



ELEVATION - 4





6 FIRST LEVEL FLOOR PLAN

MAIN DINING 19

